

N^o 1451

MIDSHIP SECTION.

DIMENSIONS: LENGTH B.P. 290'-0" x BREADTH MLD 42'-10" x DEPTH MLD 20'-10"

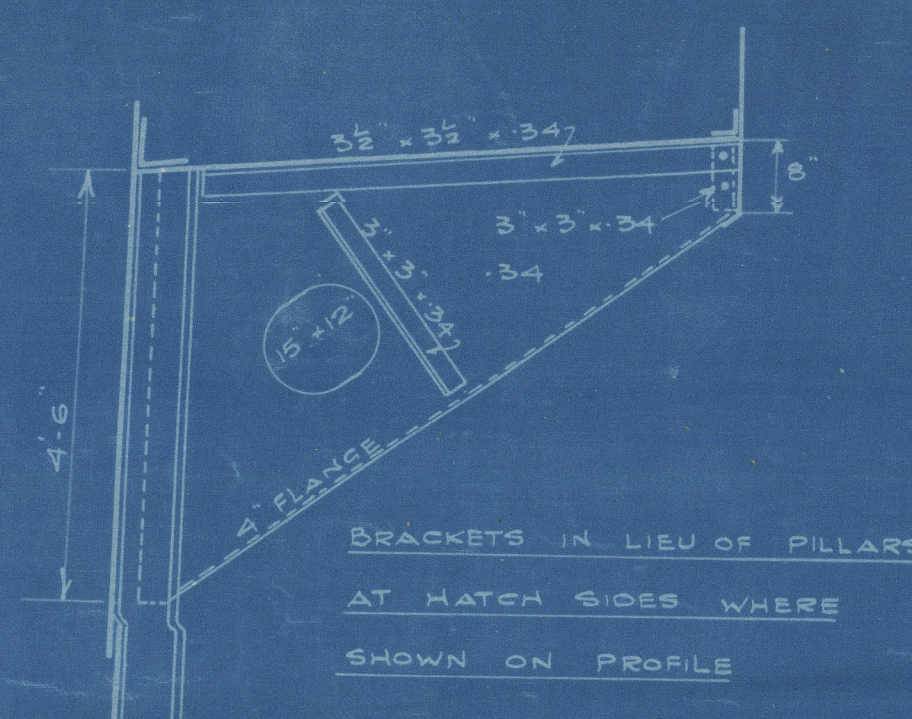
CLASS 100 A.I. LLOYDS

SCALE: 1" = 10'

S.S. "SEA VENTURE"

NUMERALS.

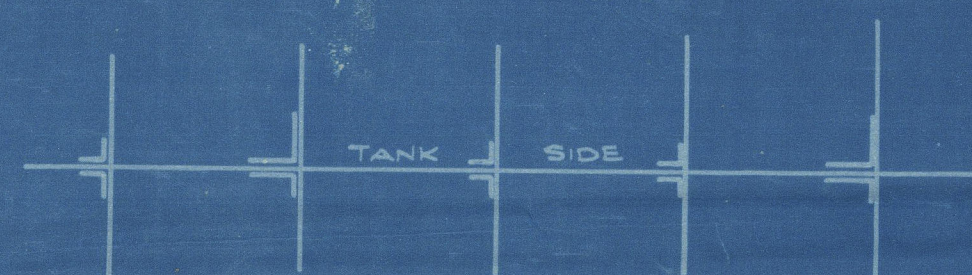
L	=	290'-0"
B	=	42'-10"
D	=	20'-10"
1 ST No.	L x D	= 6040
2 ND No.	L x (B+D)	= 18461
3 RD No.	UPPER DECK	= 13.92
4 TH No.	BRIDGE DECK	= 10.23
5 TH No.	FOR FRAMING	= 17.17
6 TH No.	WITH NORMAL BEAM KNEE	= 17.92
7 TH No.	4 NORMAL FRAME KNEE	= 17.17
8 TH No.	FRAME KNEE ABOVE NORMAL	= 17.17



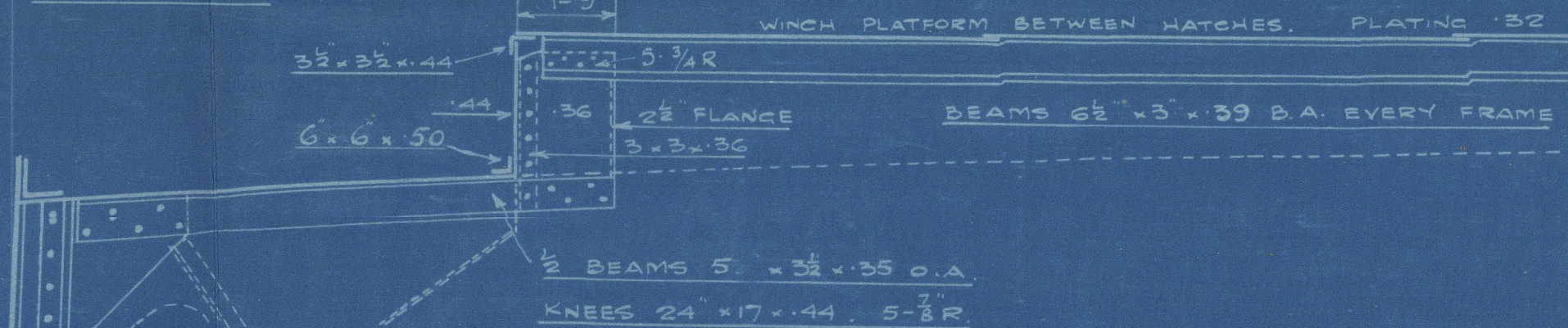
EQUIPMENT NO.	
L x (B+D)	18461
ERECTOR 116 x 7.5 x 7.5	652
HOUSES 66 x 7.5 x 5	247
	19360

EQUIPMENT	
2 POWER ANCHORS 38 1/2 CTS EACH STOCKLESS	
1 " " " " " "	32 1/2
1 STREAM 10 EX. STOCK	
240 FATHOMS 1 1/2 STUO CHAIN CABLE	
75 4 1/2 STEEL WIRE STREAM	
90 4 " " " "	
2 @ 20 22 " " " "	
2 @ 30 23 " " " "	

SINGLE ATTACHMENT
ANGLE TO TANK SIDE 4 KNEE 6' x 6' x 45 EVERY 3RD FRAME
AFT OF 1/2 L AND EVERY 2ND FRAME FORD OF 1/2 L.
EVERY FRAME IN PANTING AREA.



STRINGER PLATE IN WELLS 76 x 100
FOR 1/2 L TO 70
STRINGER ANGLE 6' x 6' x 64
FOR 1/2 L TO 50



FORGINGS

STERN POST	8 1/2' x 52"
RUDDER	7 1/2' x 55"
STEM BAR	7 1/2' x 28"
BOSS PLATE	52

CENTRE GIRDER 35' x 44 FOR 1/2 L 36 ENDS
54 B.R. BUTTS TREBLE
TOP BAR 5' x 5' x 42 SINGLE FOR 1/2 L TO
40 ENDS DOUBLE 3' x 3' x 42 IN E.R. 4 UNDER
THRUST. DOUBLE 3' x 3' x 40 FORD OF 1/2 L
BOTTOM BAR 6' x 6' x 46 SINGLE
3 1/2' x 3 1/2' x 45 FORD OF 1/2 L DOUBLE

MARGIN PLATE 140 HOLES 4 R. 50 B.R.
DEPTH 3 1/4"
BUTTS DOUBLE ALL FORD & APT
ANGLE 3 1/2' x 3 1/2' x 42
VERTICAL ANGLE 3' x 3' x 34 SINGLE 44 B.R.
NORWARD IN PANTING AREA
TANK OUTSIDE KNEE 37' x 47 B.R.

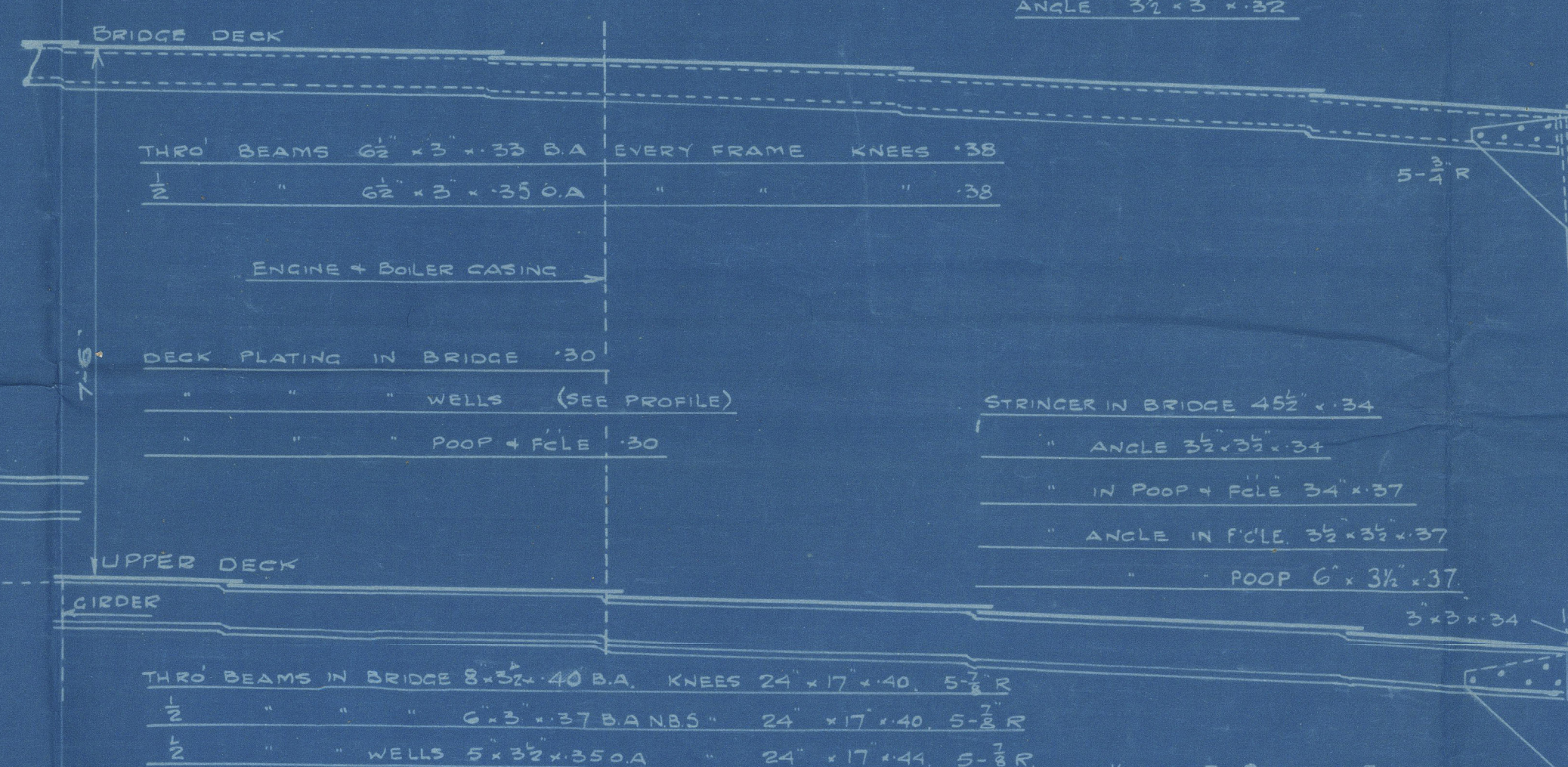
VERTICALS 3' x 3' x 34 SINGLE 44 B.R.
5' x 5' x 34 SINGLE UNDER ENGINE THRUST
5' x 5' x 34 UNDER BOILER BEARERS

BOTTOM SHELL 47 FOR 1/2 L 40 ENDS BUTTS TREBLE TO
DOUBLE WHERE NOT EXCEEDING 42.
THREE STRAKES NEXT TO KEEL TO HAVE MIDSHIP THICKNESS
MAINTAINED FORWARD TO RUL POSITION OF COLLISION BULKHEAD

KEEL 44 1/2' x 55 FOR 1/2 L 55 ENDS
BUTTS TREBLE RIVETED FORD & APT

BRIDGE DECK PLATING 30 BETWEEN OPENINGS
" " " " 34 ABBEAST
POLE " " 30 UNSHEATHED
POOP " " 26 SHEATHED

BRIDGE DECK STRINGER 46 1/2' x 42
ANGLE 3 1/2' x 3 1/2' x 42
POOP DECK STRINGER 27' x 31
ANGLE 3' x 3' x 31
POLE DECK STRINGER 27' x 32
ANGLE 3 1/2' x 3' x 32



FRAMES SPACED 24" THROUGHOUT
MAIN FRAMES 8' x 3' x 40 B.A. N.B.S.
INCREASED 04 IN ENGINE SPACE, 10 IN BOILER SPACE, 06 IN PERMANENT
PEAK FRAMES 5 1/2' x 3' x 43 B.A. N.B.S.
BRIDGE FRAMES FOR 4 SPACES AT EACH END 40
ALT. FRAMES 5' x 3' x 42 B.A. SCARPHED 15" TO MAIN FRAMES
POOP TWEEN DECK FRAMES 5 1/2' x 3' x 43 B.A. N.B.S. ALT. FRAMES
BRACKETED TO UPPER DECK WITH INTERMEDIATE FRAMES
3' x 3' x 32 NOT ATTACHED AT BOTTOM
PANTING FRAMES 10' x 3 1/2' x 52 B.A. N.B.S.

SOLID FLOORS 34 44 B.R. SPACED AS PER PROFILE
SIDE GIRDERS 34 44 B.R.
REVERSE FRAMES ON FLOORS 3 1/2' x 34 44 B.R. SINGLE
3' x 5' SINGLE IN E.R. 6' x 6' UNDER BOILER BEARERS

FRAMES ON SOLID FLOORS 3' x 3' x 34 SINGLE
5' x 5' SINGLE FORD OF 1/2 L
SOLID FLOORS ON TANK ENDS INCREASED 08
(EXCEPT IN E.R.) AND STIFFENED AS PER RULE
SIDE GIRDER VERTICAL ANGLE 3' x 3' x 34 44 B.R.
" " " " " " " " 44 B.R.
" " " " " " " " 44 B.R.
" " " " " " " " 44 B.R.
EXTRA GIRDER UNDER ENGINES & THRUST

BRIDGE SIDE PLATING 45
BUTTS TREBLE
POOP SIDE PLATING 33
BUTTS SINGLE
POLE SIDE PLATING 35
BUTTS SINGLE

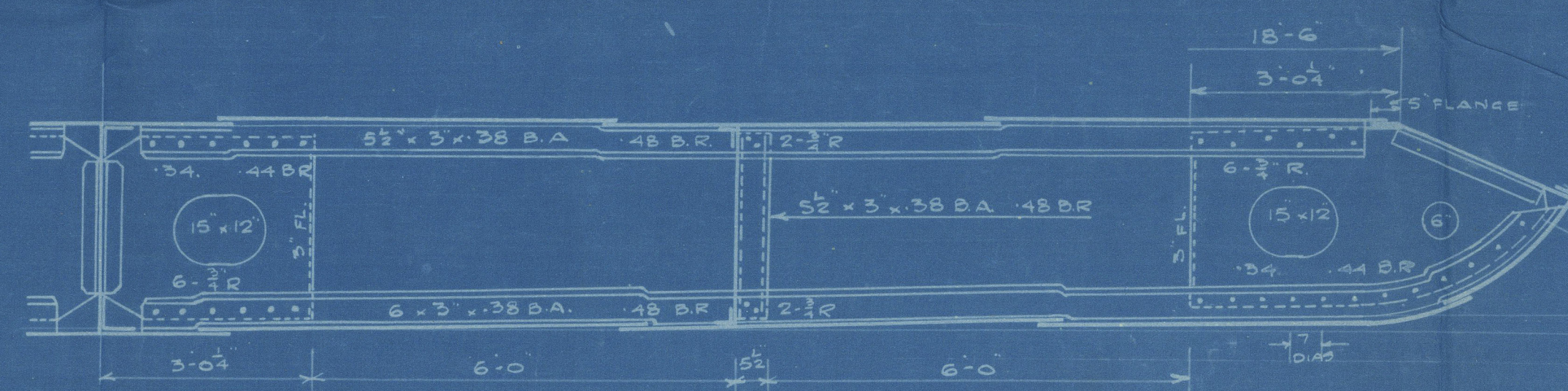
G OUT SUBSTRATE
72' x 27 FOR 1/2 L 40 ENDS
INCREASED AT BREAK 10 IN BOILER SPACE
47 IN WAY OF BRIDGE
BUTTS TREBLE TO DOUBLE WHERE NOT
EXCEEDING 42 QUADRUPLE FOR 1/2 L

F IN
76' x 54 FOR 1/2 L 40 ENDS
47 IN WAY OF BRIDGE
BUTTS TREBLE TO DOUBLE WHERE NOT
EXCEEDING 42 AT ENDS

E OUT 76' x 47 FOR 1/2 L 40 ENDS
BUTTS TREBLE TO DOUBLE WHERE
NOT EXCEEDING 42

D IN 47 FOR 1/2 L 40 ENDS
BUTTS TREBLE TO DOUBLE WHERE
NOT EXCEEDING 42

BULGE KEEL 9' x 40 DUBS
4' x 3 1/2' x 40 ANGLE



ENCLOSURE
N^o 268

3523
SOUTHWICK CHURCH
15.9.30

SUNDERLAND

SWAN HUNTER & W. R. LD

MIDSHIP SECTION (AS BUILT)

S/S. SEA VENTURE (YARD N°1451)

SUNDERLAND RPT. NO. 30464

RETAIN



© 2020

Lloyd's Register
Foundation

W443-0222