

BUILT STEEL CRANK SHAFT. TO LLOYD'S REQUIREMENTS.

ONE THUS COMPLETE. IN TWO INTERCHANGEABLE PARTS.

WEBS TO BE SHRUNK ON TO SHAFTS & SECURED WITH DOWELS.

CRANK PINS TO BE SHRUNK INTO WEBS.

DIA OF CYLINDERS 28 1/2" 41" 50" 85". STROKE 57". REVS 74".

BOILER PRESSURE 220 LBS PER SQ. IN.

DIA OF THRUST SHAFT UNDER COLLARS 17 1/2".

" " INTERMEDIATE SHAFT 16 1/2".

" " PROPELLER SHAFT 18 1/2".

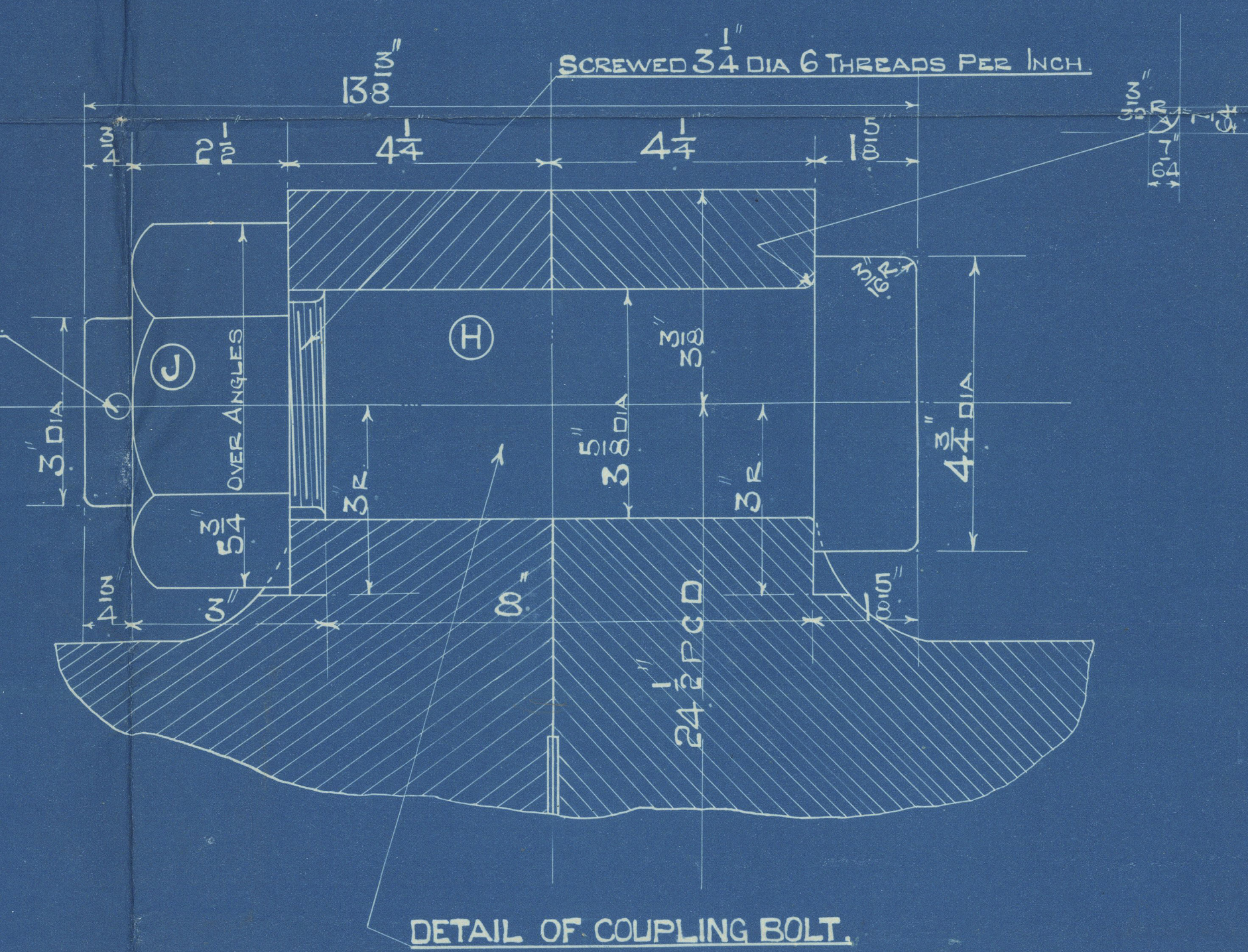
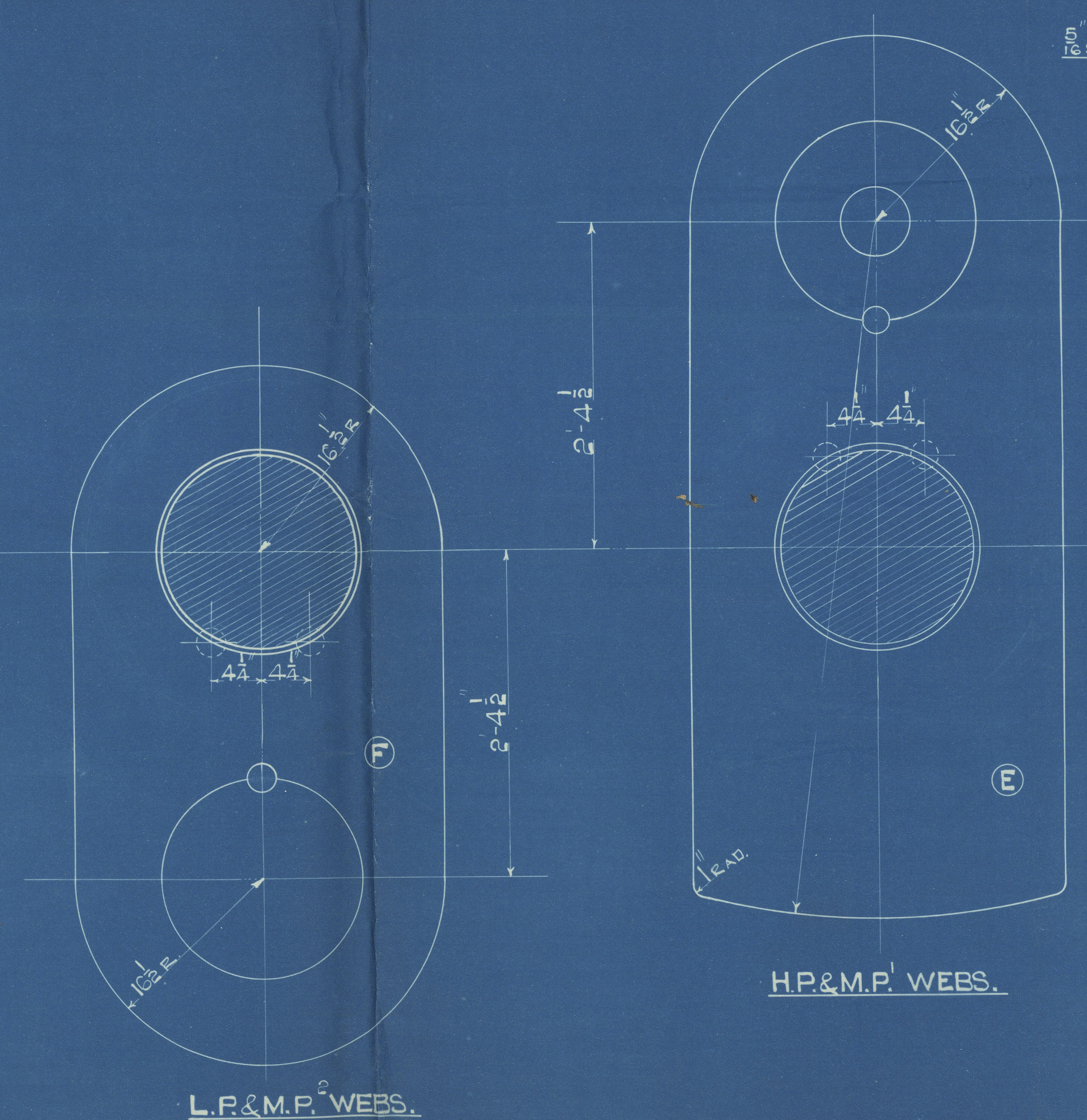
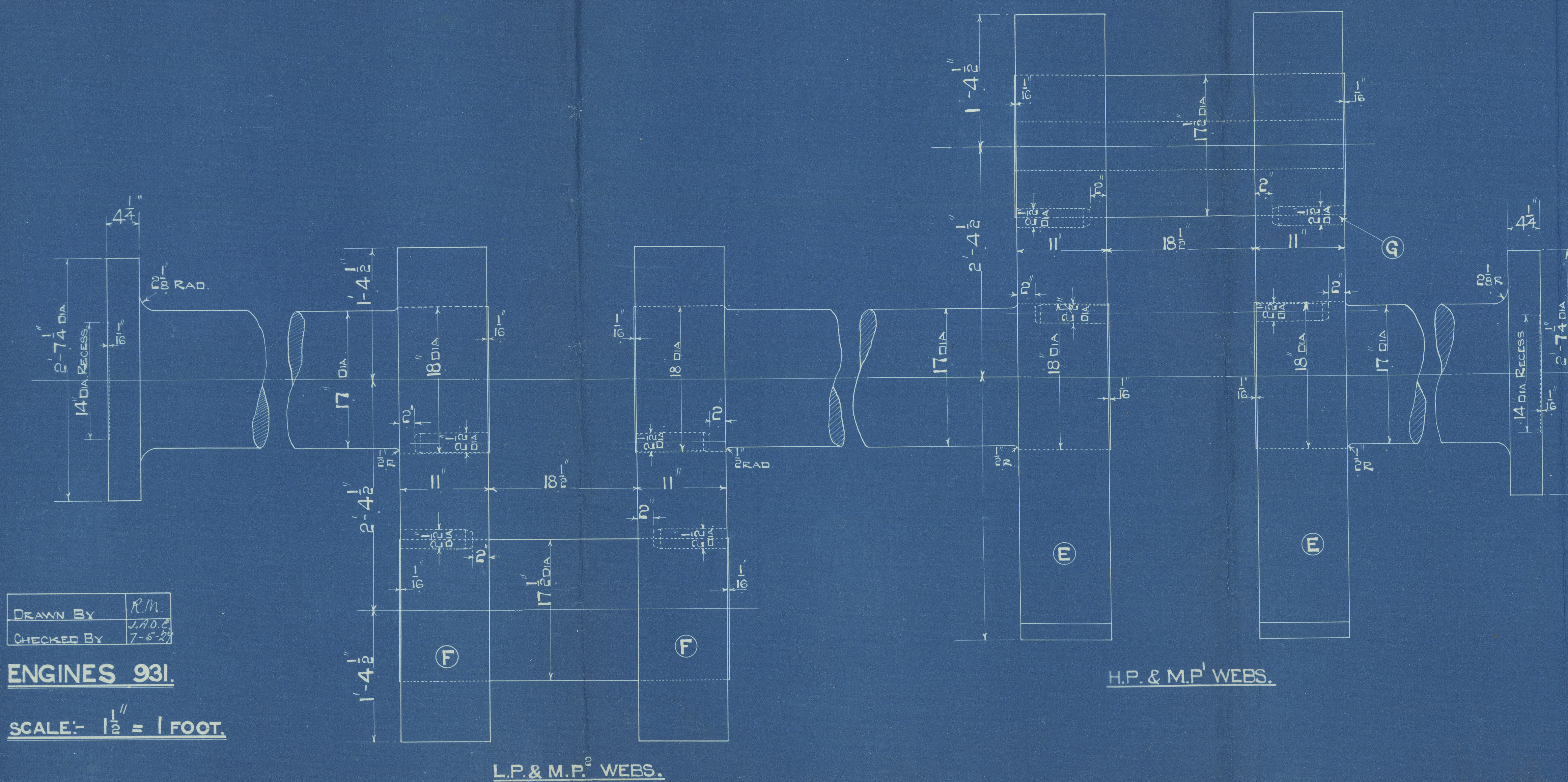
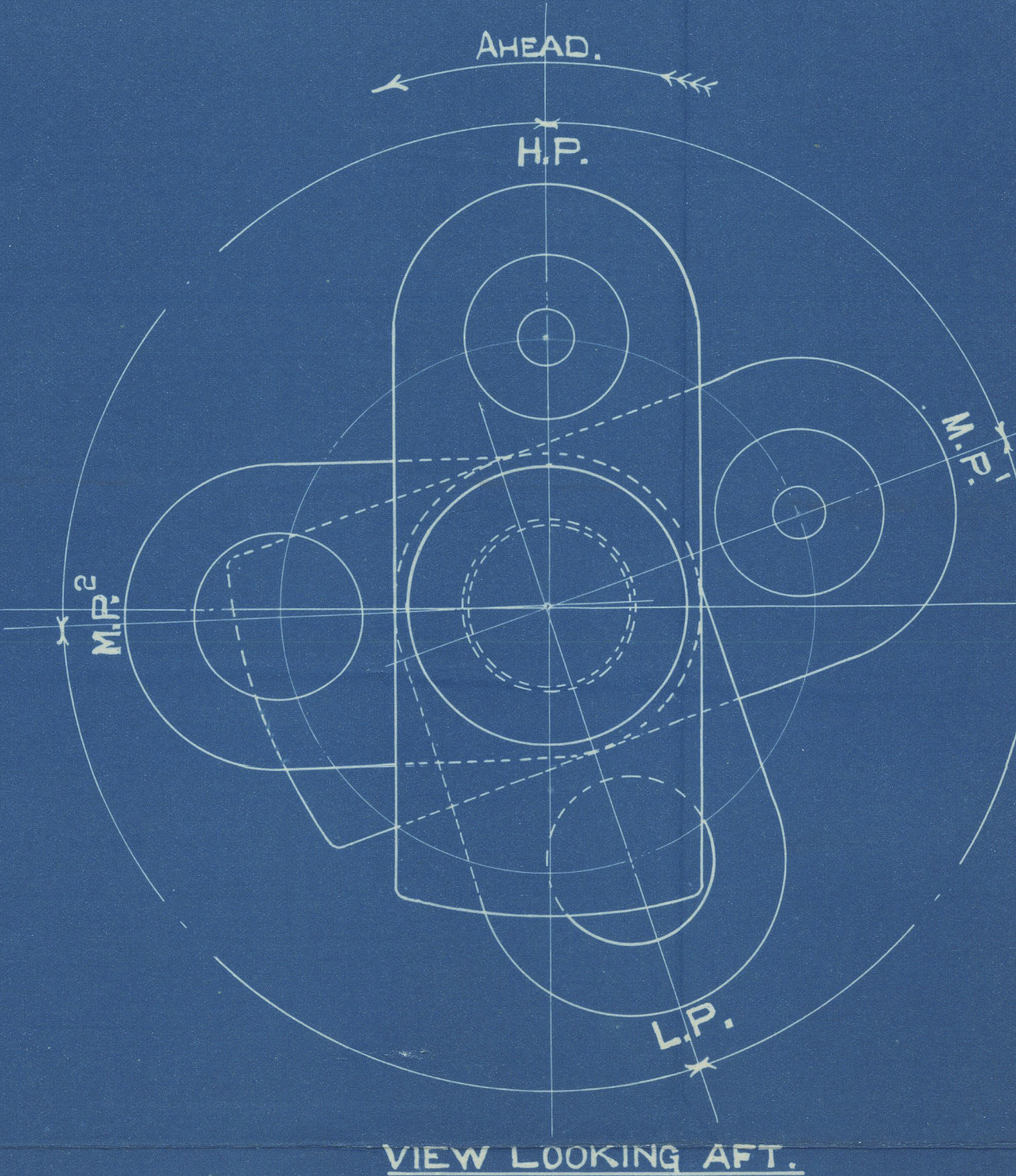
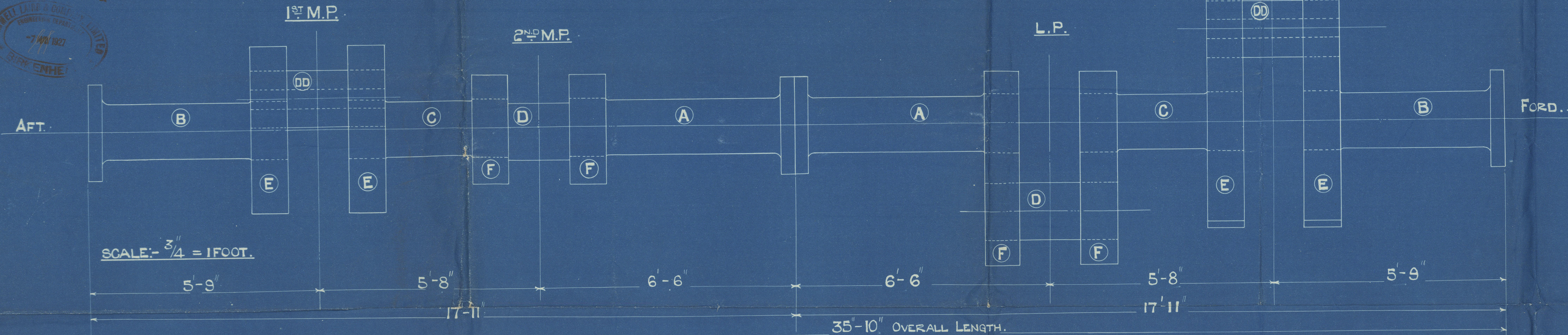
" " PROPELLER 21'-0".

COST CHARGE:- CRANK SHAFT.

ENGINES 931.

13/5/27

166254



HALF SIZE.

LIST OF PARTS.

MARK	NO OFF	NAME OF PART	ORDERED ON.
A	2	JOURNAL (LONG END).	ORDERED OUT
B	2	" (SHORT ").	"
C	2	" (INTERMEDIATE).	"
D	2	CRANK PINS.	"
DD	2	"	"
E	4	WEBS H.P. & M.P.	"
F	4	" L.P. & M.P.	"
G	24	DOWEL PINS.	FITTING SHOP
H	8	COUPLING BOLTS.	SMITHY SKETCH
J	8	" NUTS.	"
K	8	SPLIT PINS.	FROM STOCK

DRAWN BY R.M.
CHECKED BY J.N.O.
7-5-27

ENGINES 931.

SCALE:- 1 1/2" = 1 FOOT.

8876
9/5/27

13/5/27

Plan of Shapting.
S. S. Gretafield

LIVERPOOL.

Report No. 93783

RETAIN

W440-0276



© 2021

Lloyd's Register
Foundation