

MAIN BOILERS FOR OIL TANKER STEAMER.

FOUR OFF THIS.

372 B.B. IRON TUBES 2 3/4' EXT. DIA. x 8'-5 5/8" LONG (INCLUDING 122 STAY TUBES) PER BLR.

HEATING SURFACE OF TUBES	= 2210 x 4 = 8840 sq.
" " FURNACES ETC.	= 565 x 4 = 2260 "
TOTAL	= 2775 x 4 = 11100 "

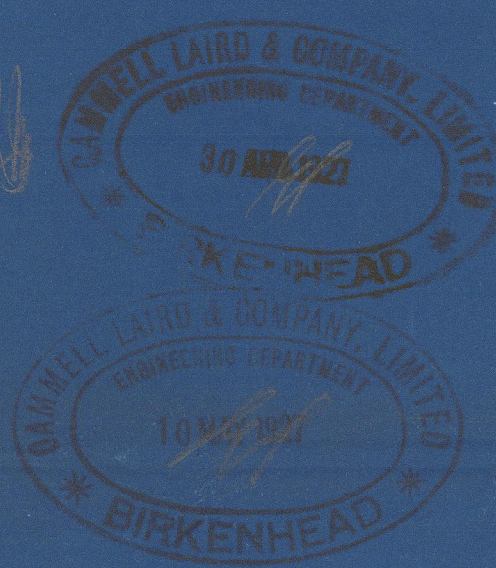
OIL FIRED.

WORKING PRESSURE 220 LBS. PER Q.

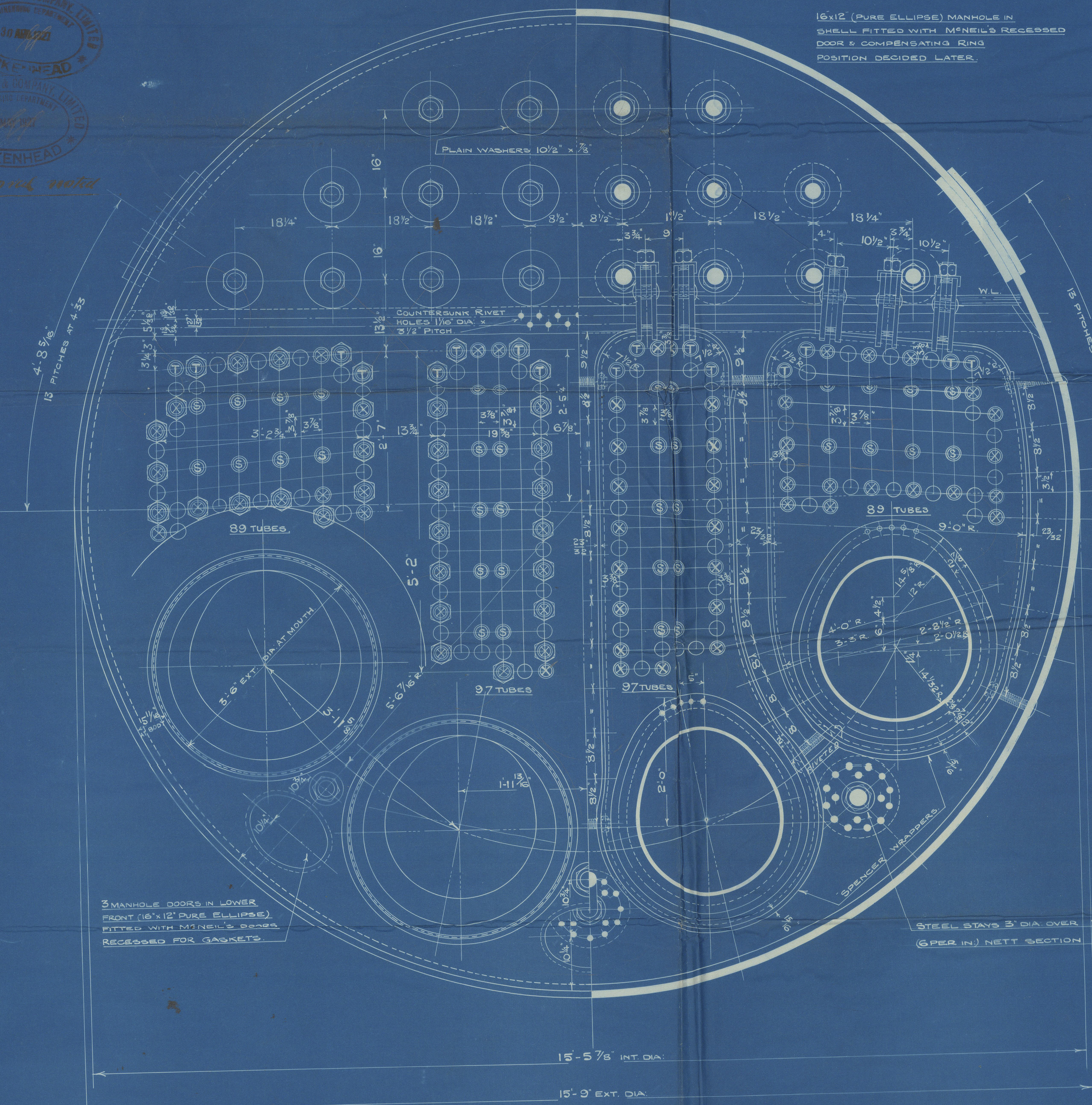
TEST 380 " " " " " "

TO THE TESTS & REQUIREMENTS OF LLOYDS.

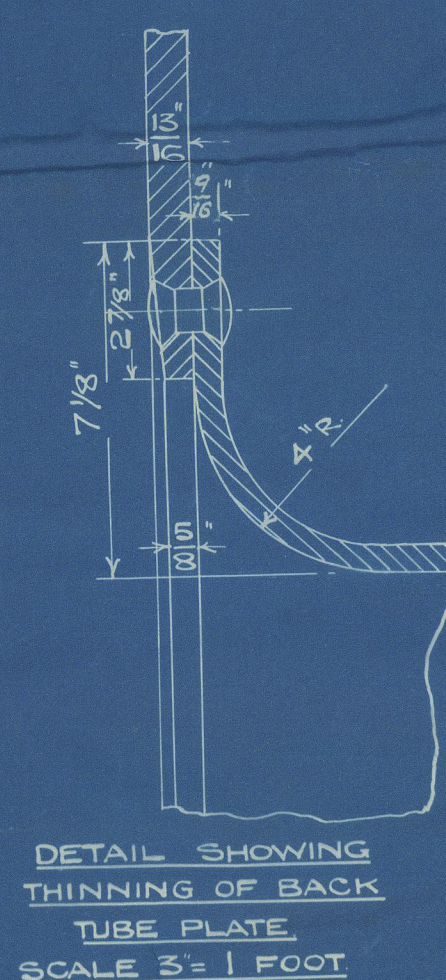
168 216



Approved under



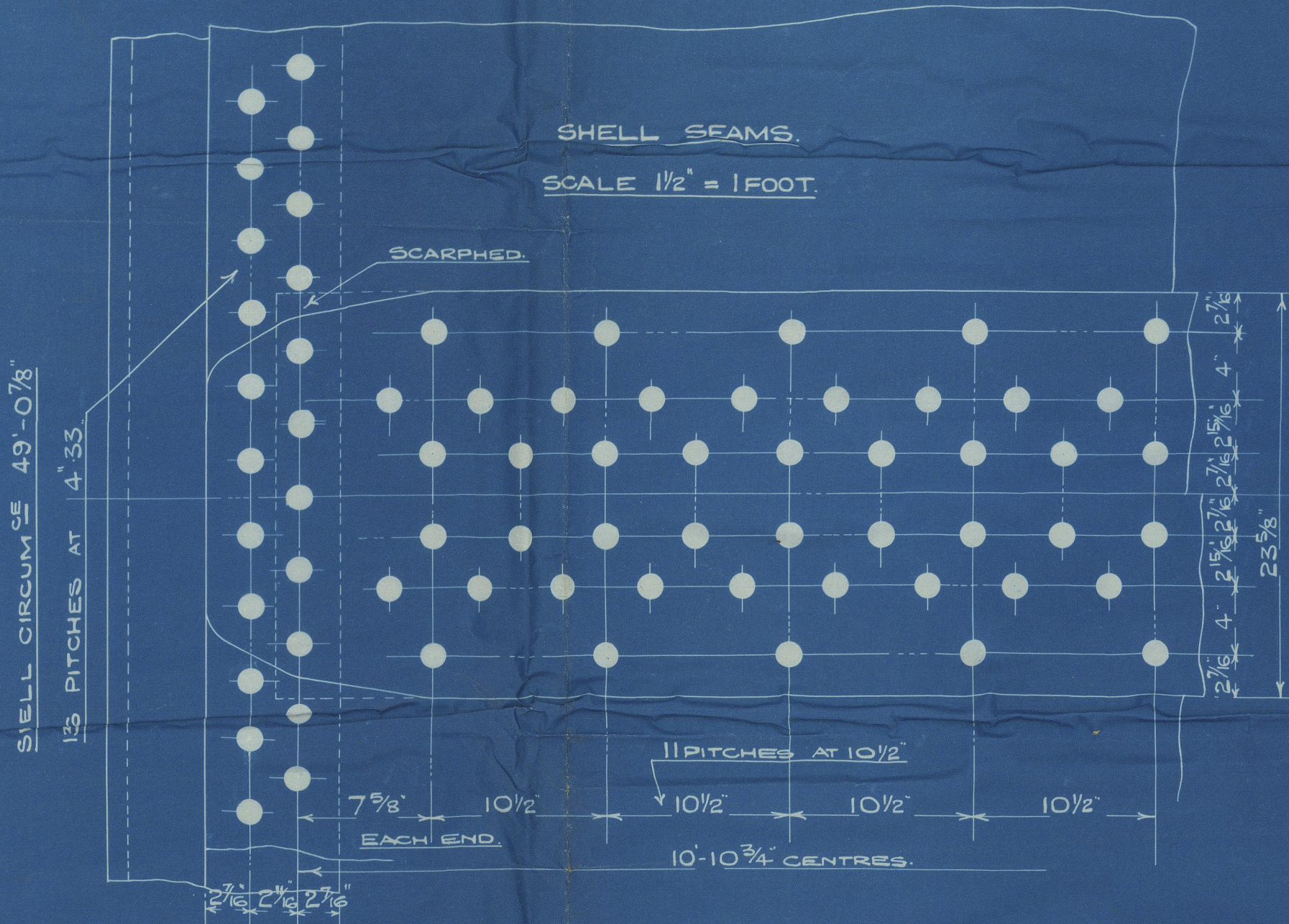
(6x12 PURE ELLIPSE) MANHOLE IN SHELL FITTED WITH MENSEL'S RECESSED DOOR & COMPENSATING RING POSITION DECIDED LATER.



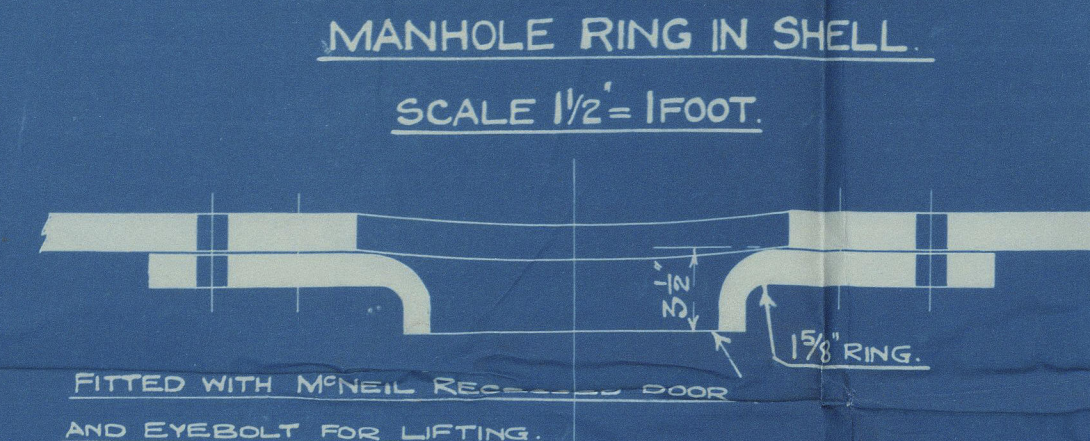
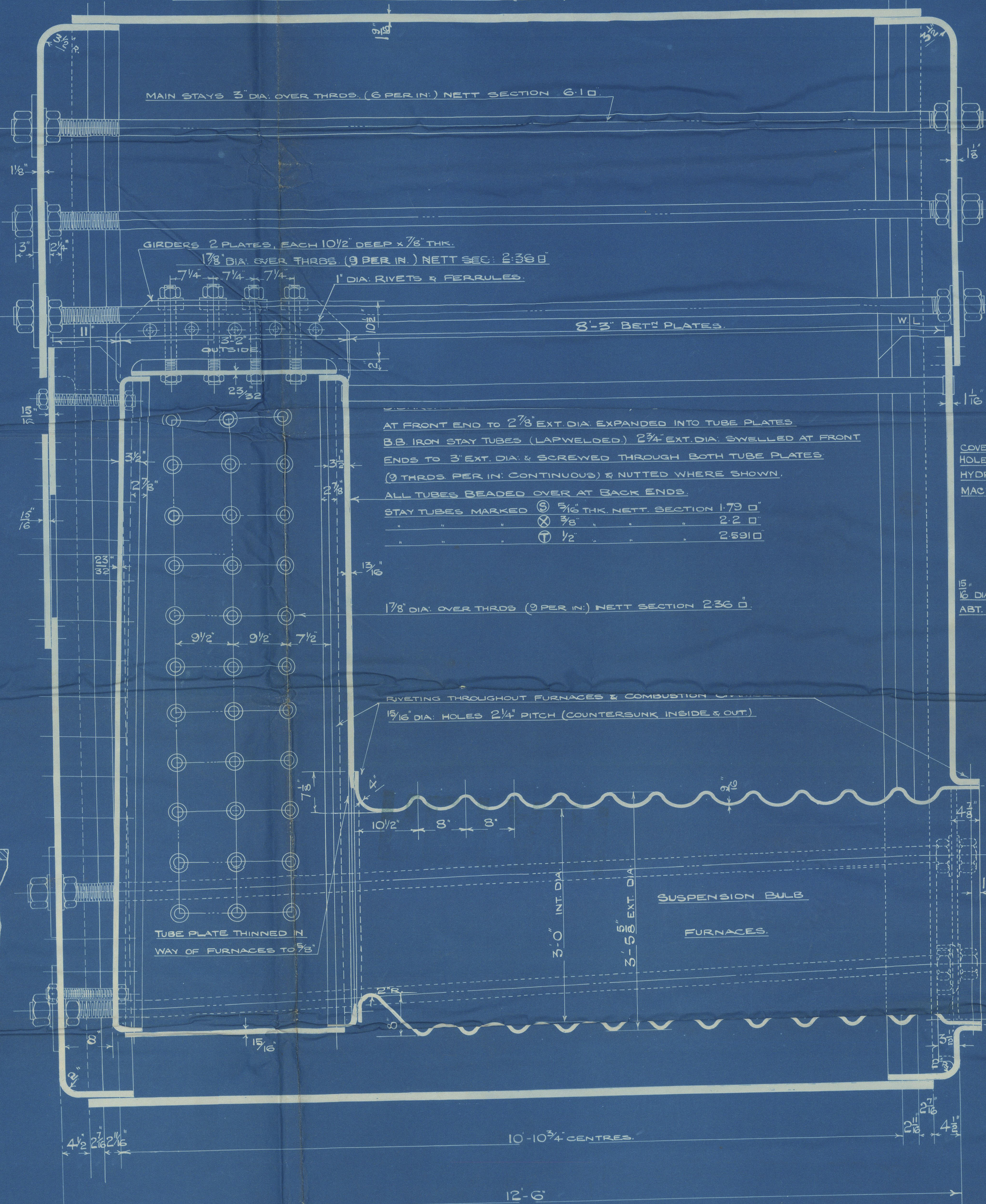
STEEL STAYS 3" DIA. OVER THRODS (6 PER IN.) NETT SECTION 6.10

FOR	OF	T.S.
SHELL STRAPS, GIRDERS, MAIN STAYS AND COVER PLATE	STEEL	28/35 TONS/Q
BOILER ENDS, COMBUSTION CHAMBERS, FURNACES, RIVET BARS, MANHOLE COMPENSATING RING & SCREWED STAYS	"	20/30 "

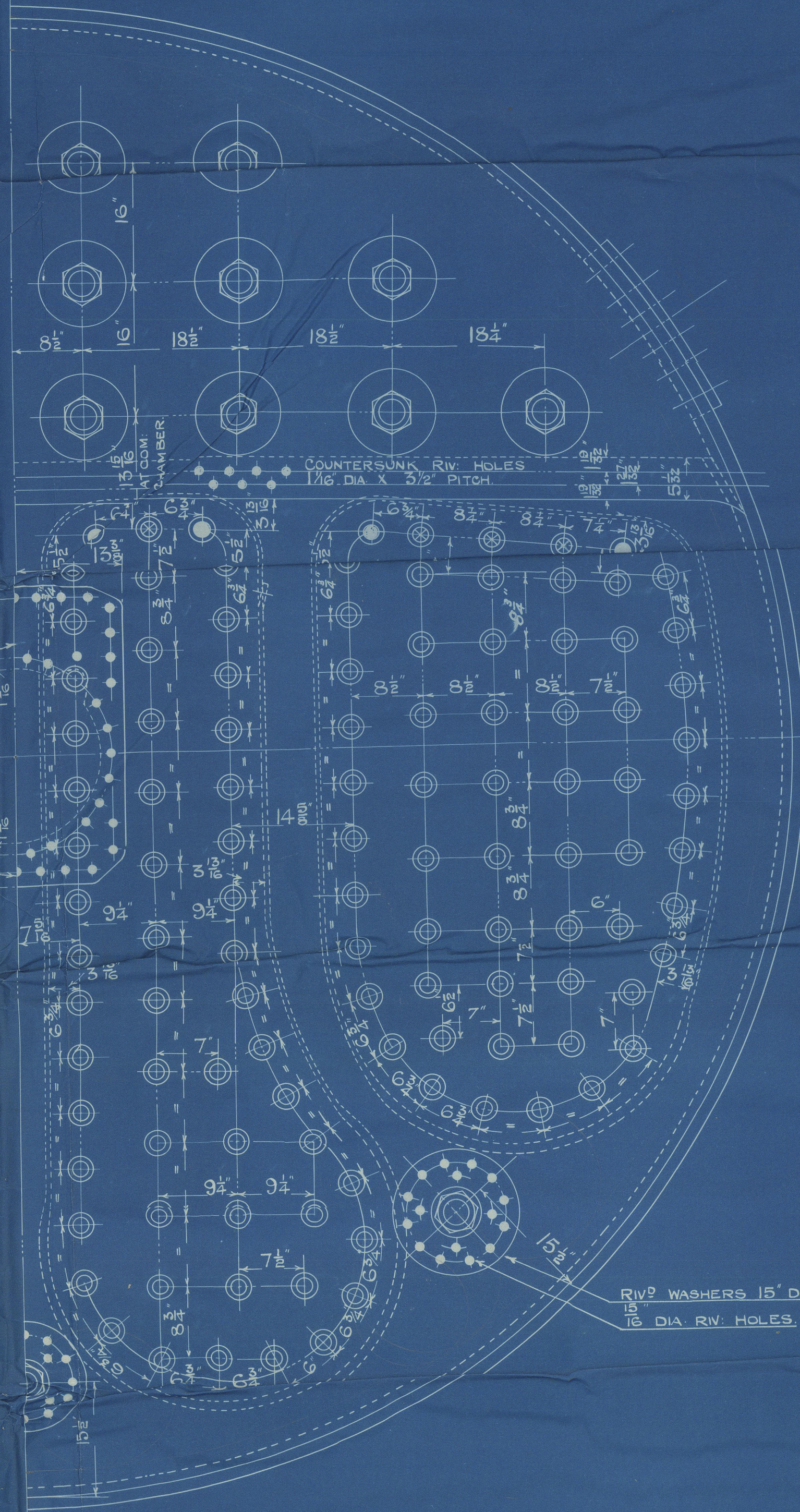
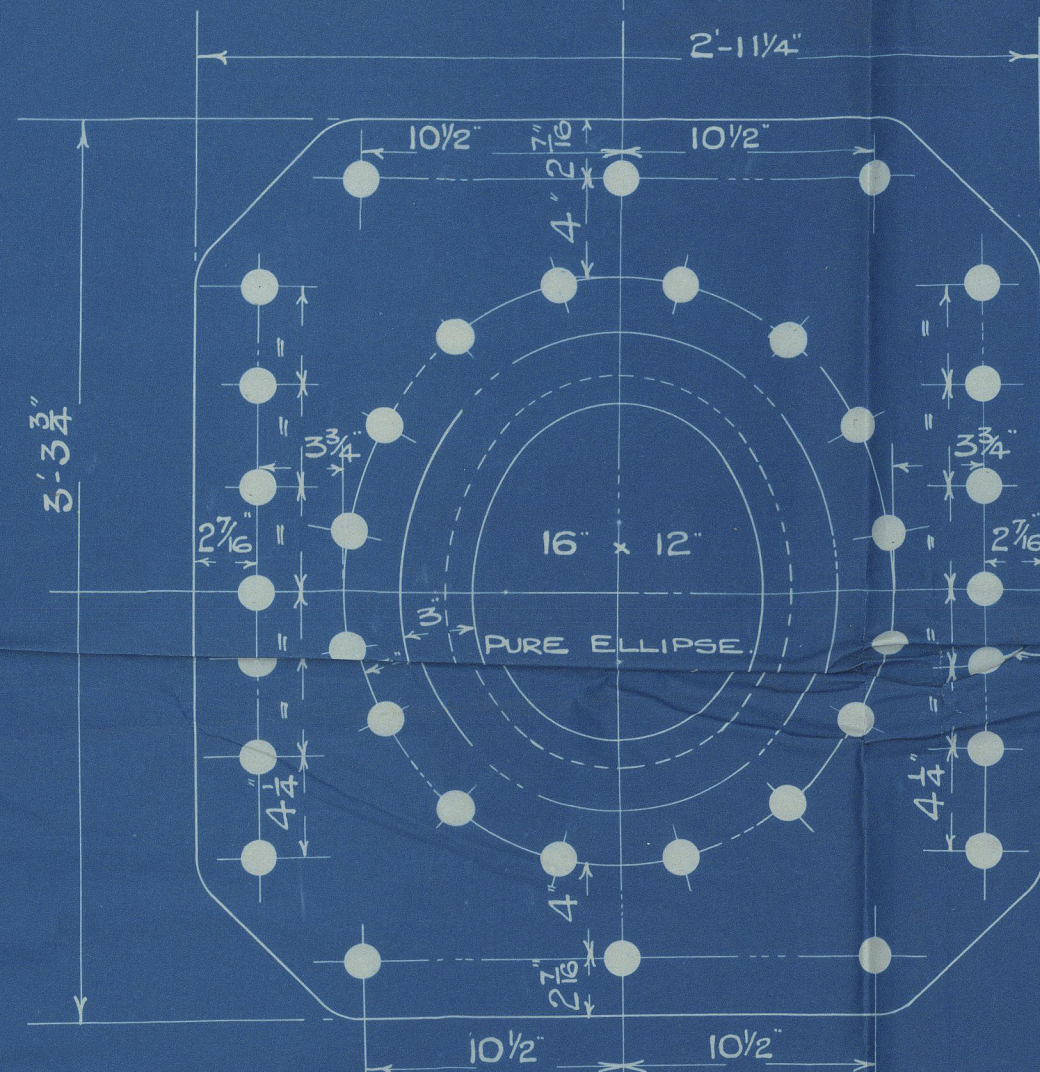
SCALE 1" = 1 FOOT & AS MARKED.



DIA. OF SHELL 15'-5 7/8" INSIDE THICKNESS OF SHELL 1 3/8" DIA. OF RIVET HOLES 1 5/8" ALL HOLES DRILLED IN PLACE LONG'S JOINT STRENGTH PLATE 84.52% RIVET 97.3% COMBINED 88.4% THICKNESS OF BUTTSTRAPS 1 5/8" (INNER) & 1 7/8" (OUTER).



BOILERS N° 931.



TUBE TO BE FITTED FOR DIAMOND BLOWERS IN EACH OF THE COMB. CHAMBER AT BACK OF BOILER POSITION DECIDED LATER.

ALL COMBUSTION CHAMBER STAYS SCREWED THRO' BOTH PLATES (9 THRODS PER IN.) & EXCEPT AT SHELL OR WHERE OTHERWISE NOTED, NUTTED.
STAYS MARKED (1) 1 5/8" DIA. OVER THRODS. NETT SECTION 2' 56.0"
(2) 2" " " " " " 2' 71.0"
(3) 2 1/4" " " " " " 3' 49.0"

NOTE: ALL COMB. CHAM. STAYS ARE 5% LARGER THAN REQ'D BY RULES.

08/16
4/1/27
C.B.
5/5/27

RETAIN

Plan of Main Boilers

S/S

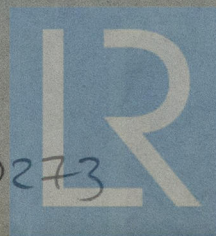
Gretafield

S. S. Gretafield

LIVERPOOL.

Report No. 93783

W440-0273



© 2021

Lloyd's Register
Foundation