

ALL FIREBOX STAYS SECURED THRU BOTH PLATES AND NUT FITTED AT EACH END
ALL $\frac{1}{8}$ NUTS $\frac{3}{4}$ DEEP EXCEPT ON GIRDER TOPS WHERE THE OUTSIDE
NUTS ARE $\frac{1}{8}$ DEEP
ALL $\frac{1}{2}$ NUTS $\frac{3}{4}$ DEEP

From DAVID ROWAN & CO., Ltd., Glasgow
ENCLOSURE
FOR MESSRS.

W 44-0129012

ONE OF EACH CONT. N°

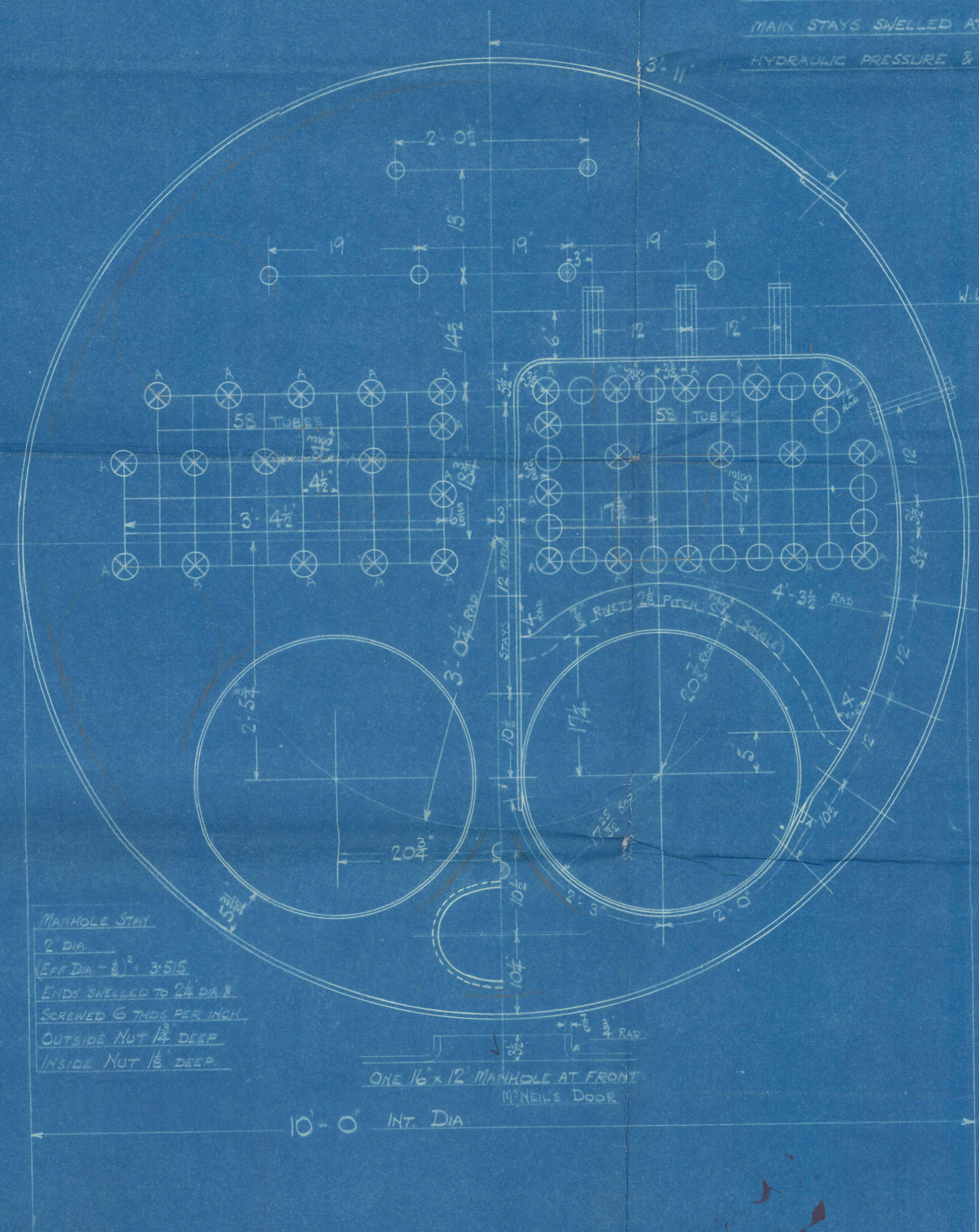
27/5/23

SURFACES	ONE BOILER
TUBES	241 #
FIRE BOX TOP AND SIDES	57 "
" " BACK	24 "
TUBES PLATE	21 "
FURNACES	52 "
TOTAL HEATING SURFACE	805 #
GRATE AREA (5-3 BARS)	30 "
TUBE AREA	5:25 "
WATER AREA	82:5 "
STEAM SPACE	151 #
GRATE AREA : HEATING SURFACE	1 : 26:8
" " : TUBE	1 : 21:4
" " : AREA	5:76 : 1
" " : WATER	1 : 2:75
" " : STEAM SPACE	1 : 5:04
% BOILER ABOVE FIREBOX	30:5
WEIGHT OF WATER	104 TONS

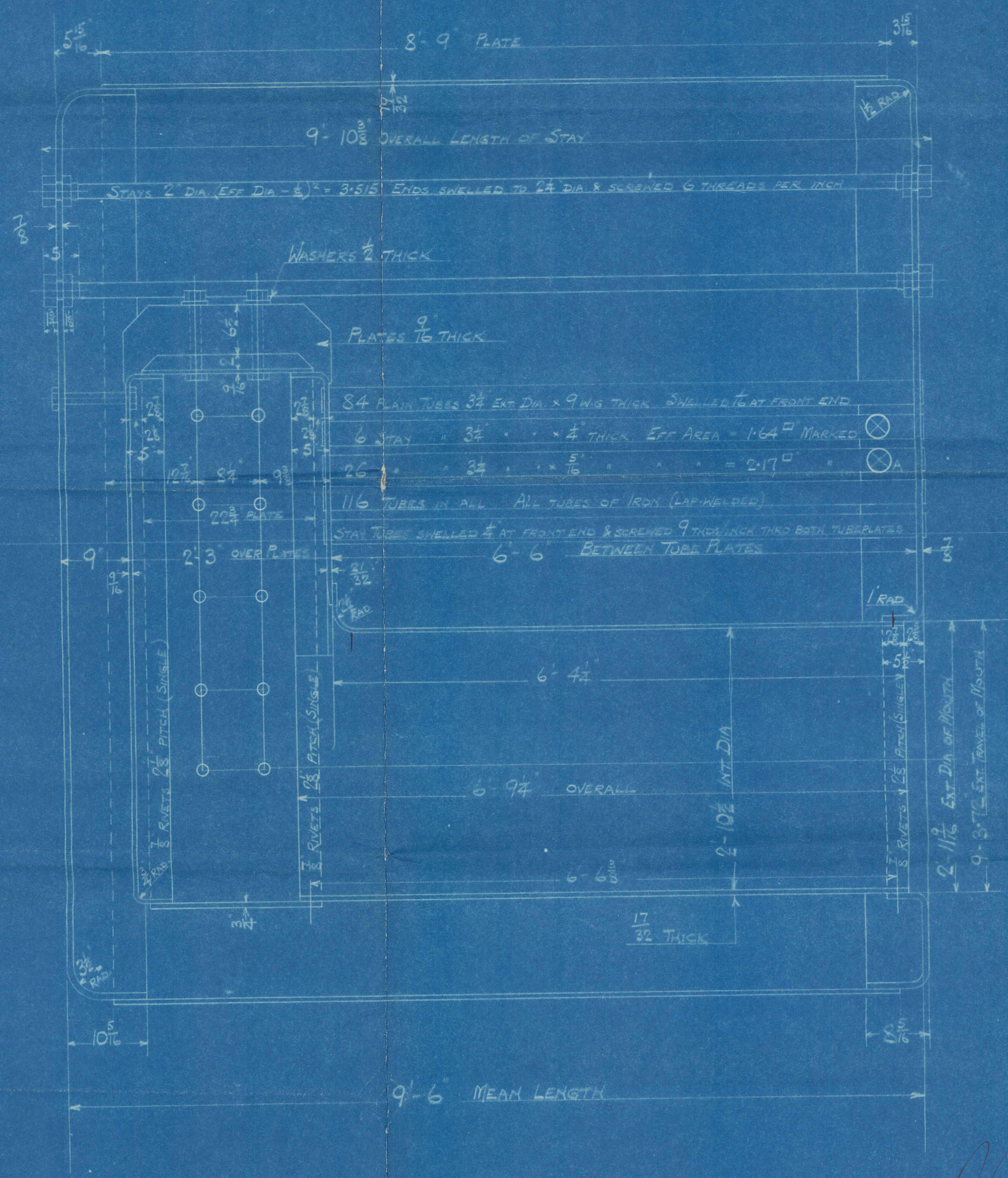
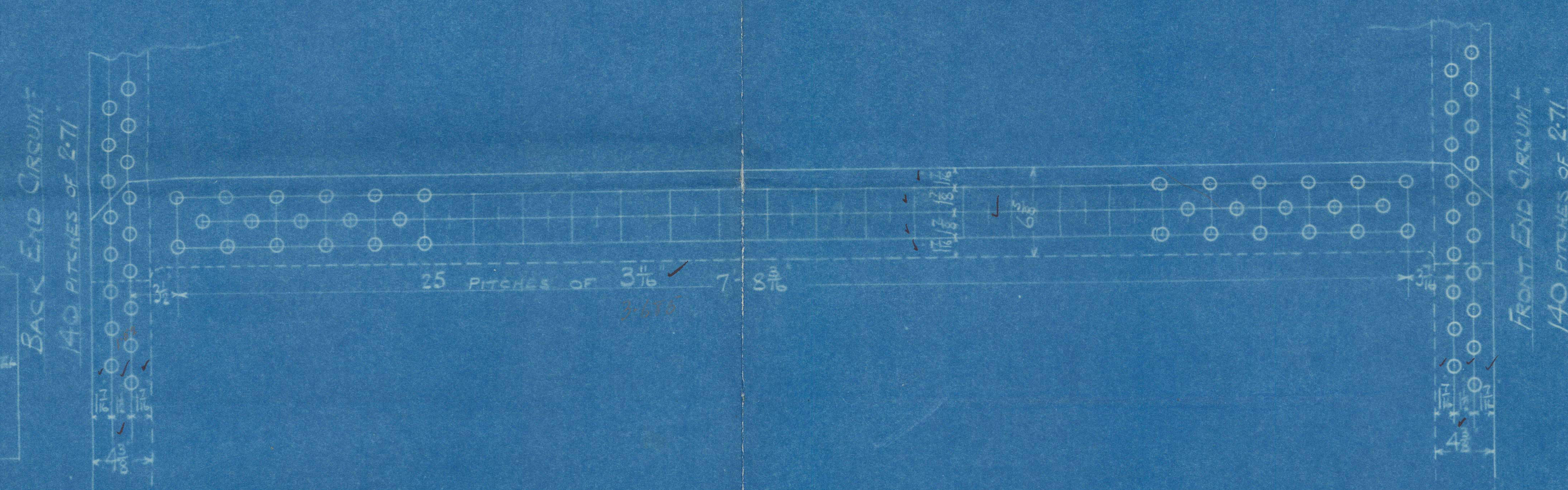
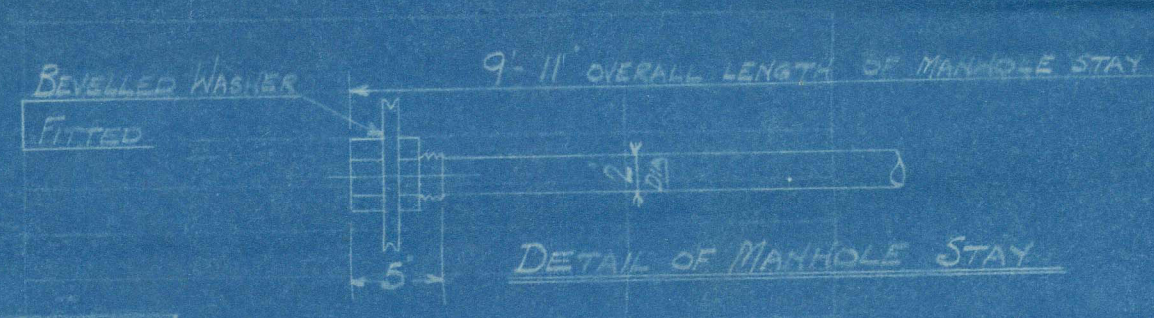
RIVETING	
LONG	END
RIVET HOLE DIA	1 1/8
PITCH	3 1/2
% PLATE	7 1/2
% RIVET	10:6

LIMITS OF TENSILE STRENGTH & MATERIAL	
SHELL AND GIRDERS	28 TO 32 TONS
OTHER PLATES	26 " 30 "
FURNACES	26 " 30 "
MAIN STAYS	28 " 32 "
SCREWED STAYS	26 " 30 "
RIVET BARS	26 " 30 "

ALL RIVET HOLES DRILLED IN PLACE
MAIN STAYS SWELLED AT ENDS BY
HYDRAULIC PRESSURE & ANNEALED



MANHOLE STAY
2 DIA
EFF DIA - 8 1/2 IN
ENDS SWELLED TO 2 1/2 DIA &
SCREWED 6 THRS PER INCH
OUTSIDE NUT 1/2 DEEP
INSIDE NUT 1/8 DEEP



DONKEY BOILER

ONE OF EACH QTY NO
CONT. NO 785-787
WORKING PRESSURE 100 LBS PER SQ INCH
TESTED TO 200 " "
TO PASS LLOYDS SURVEY
SCALE 1/8" = ONE FOOT

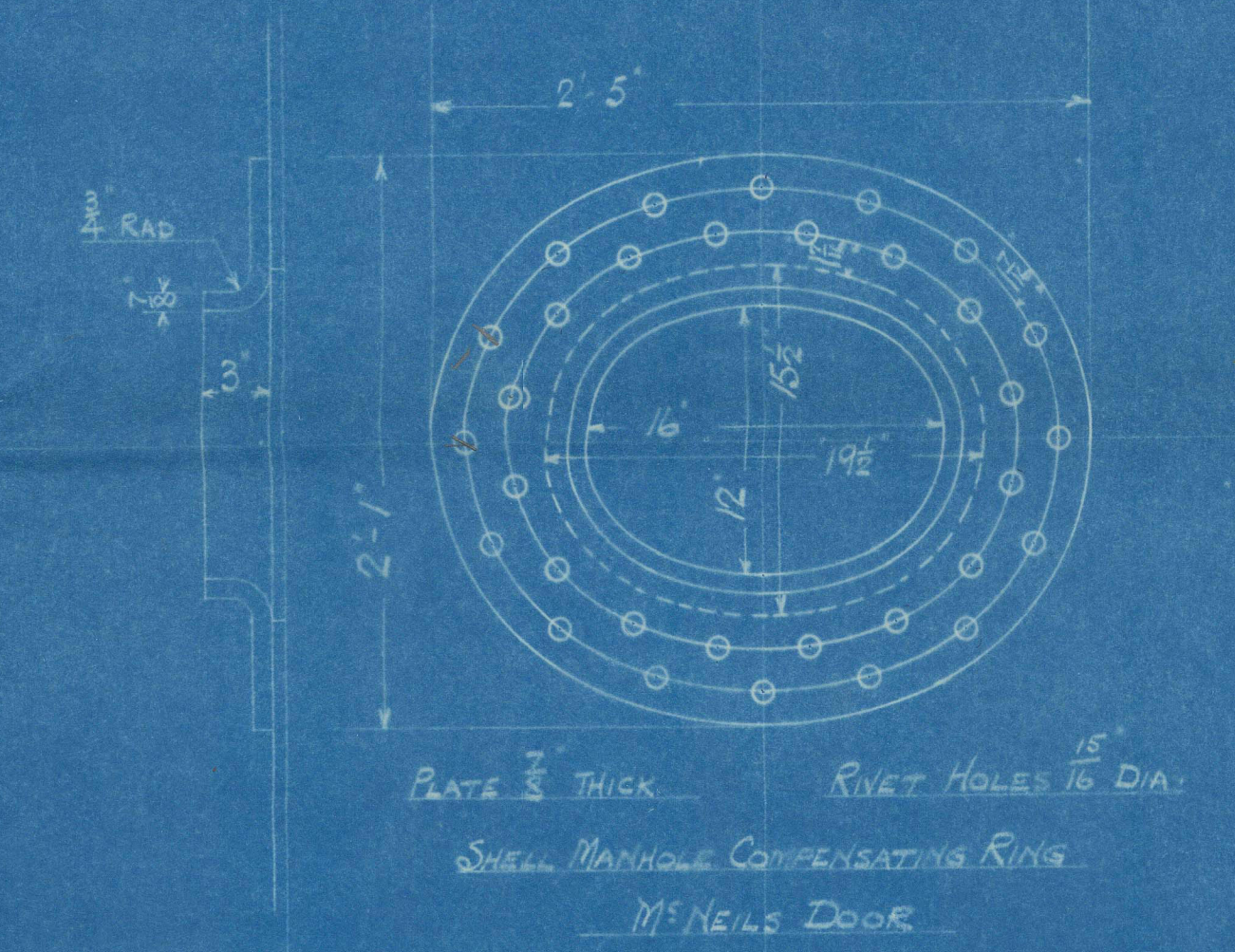
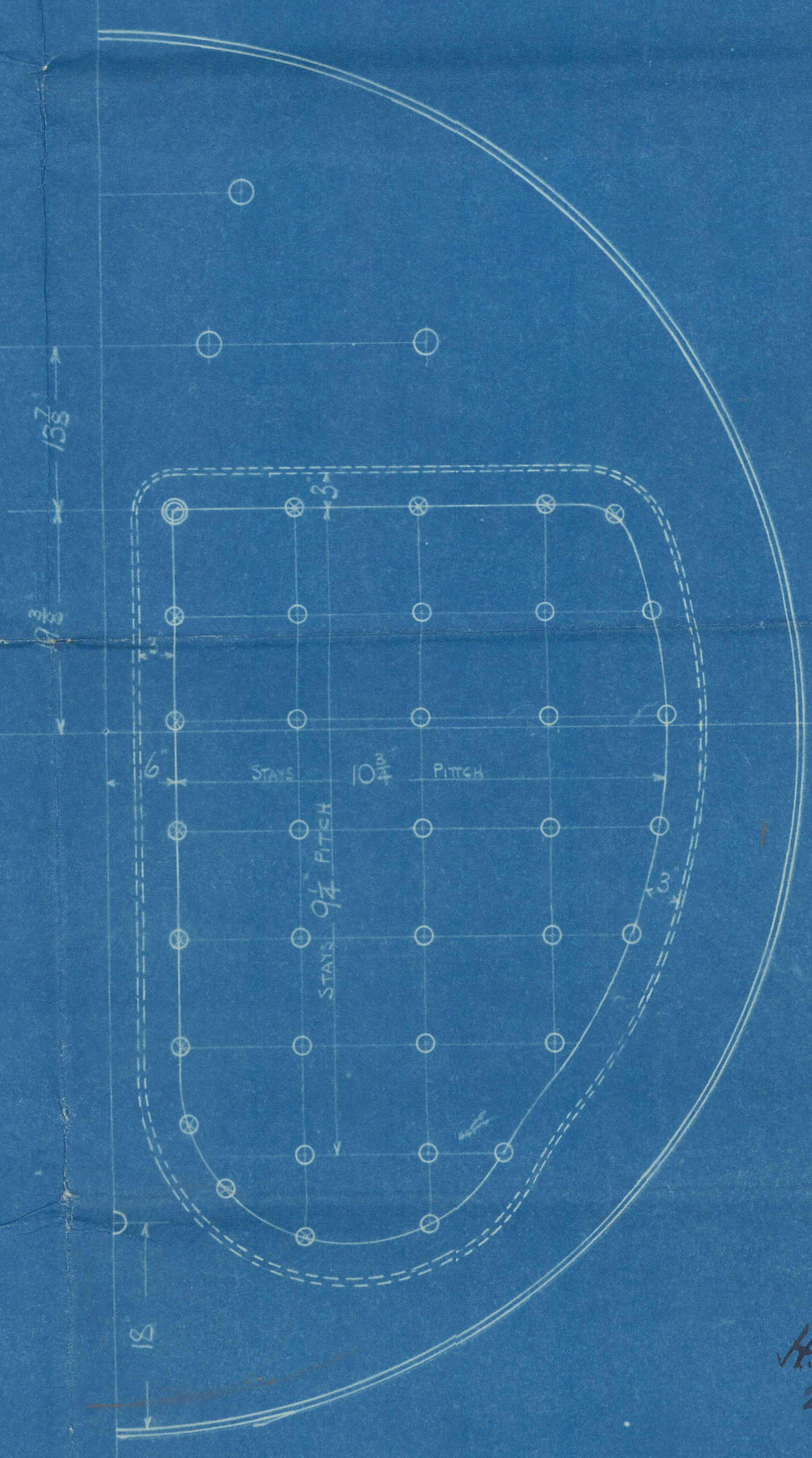


PLATE 3/8" THICK RIVET HOLES 1 1/8" DIA.
SHELL MANHOLE COMPENSATING RING
M'NEILS DOOR



FIREBOX STAYS - STEEL	
POSITION	MARK
BACK TOP & SIDES	0
BACK RISE SPACER & TOP ROW	1
BACK TOP CORNER	2

ALL FIREBOX STAYS SCREWED THRU BOTH PLATES AND NOT FITTED AT EACH END
ALL 1/8" NUTS 1/2 DEEP EXCEPT ON GINDER TOPS WHERE THE OUTSIDE
NUTS ARE 1/8 DEEP



D. Rowan & Co. Ltd

Contracts Nos 785 & 787

"Hawking" Donkey Boiler.

ex 

W.P. 100 lbs/p.

s/s Pentirion.

GLASGOW REPORT No. 43891.

Ltd 16575.

Boilers Stamped.

Nº 785

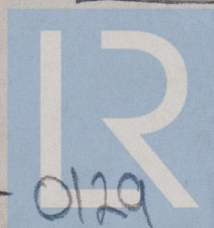
Nº 16490
LLOYD'S TEST
200 LBS.
W.P. 100 LBS.
7.5.24 J.S.C.

s/s Pentirion

Nº 787

Sls 44006

Nº 16492
LLOYD'S TEST
200 LBS
W.P. 100 LBS.
7.5.24 J.S.C.



© 2021

Approved 29.6.23
Lloyd's Register
Foundation

WM4-0129