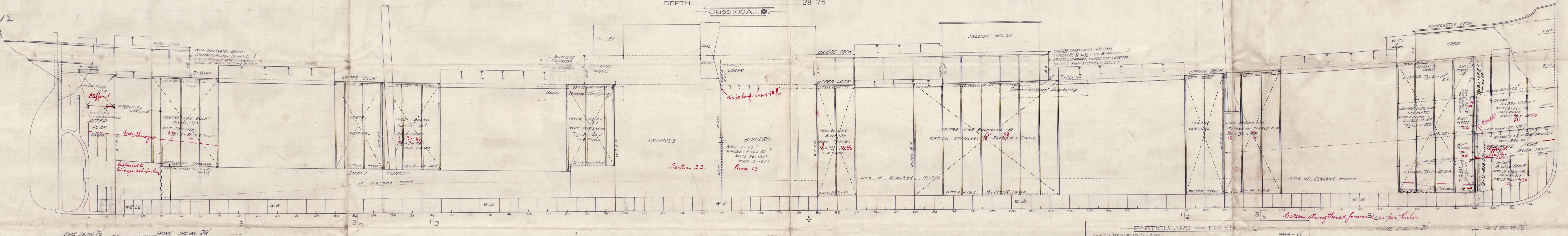


— PROFILE & DECK PLANS. S.S. N<sup>o</sup> 437-8. —

DIMENSIONS AS PER RULE  
LENGTH 363.00  
BREADTH 50.79  
DEPTH 28.75  
Class 100A.1.1.

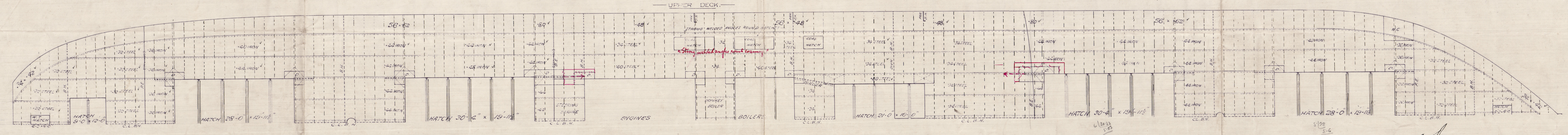
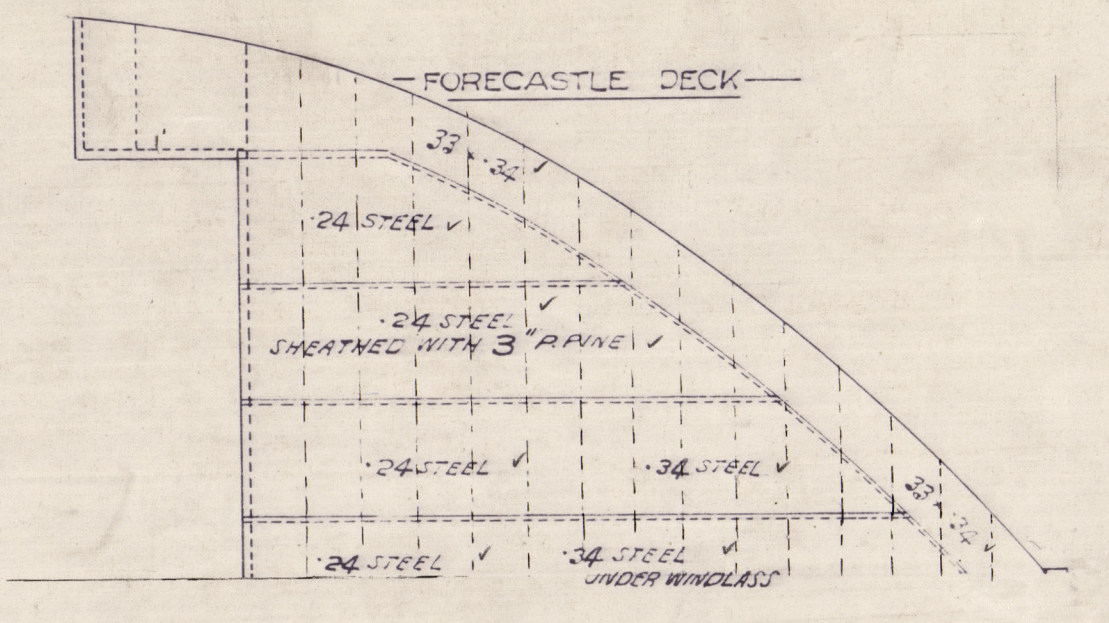
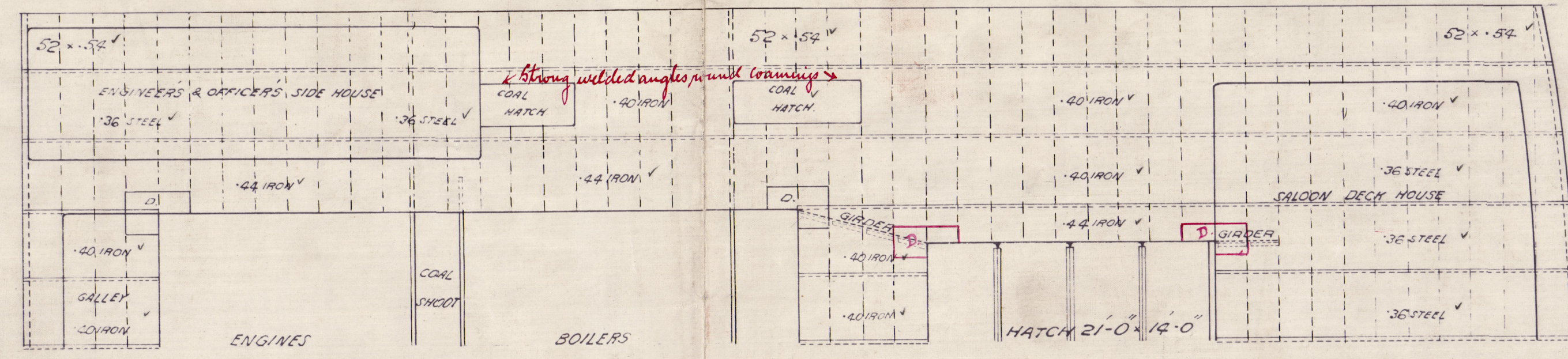
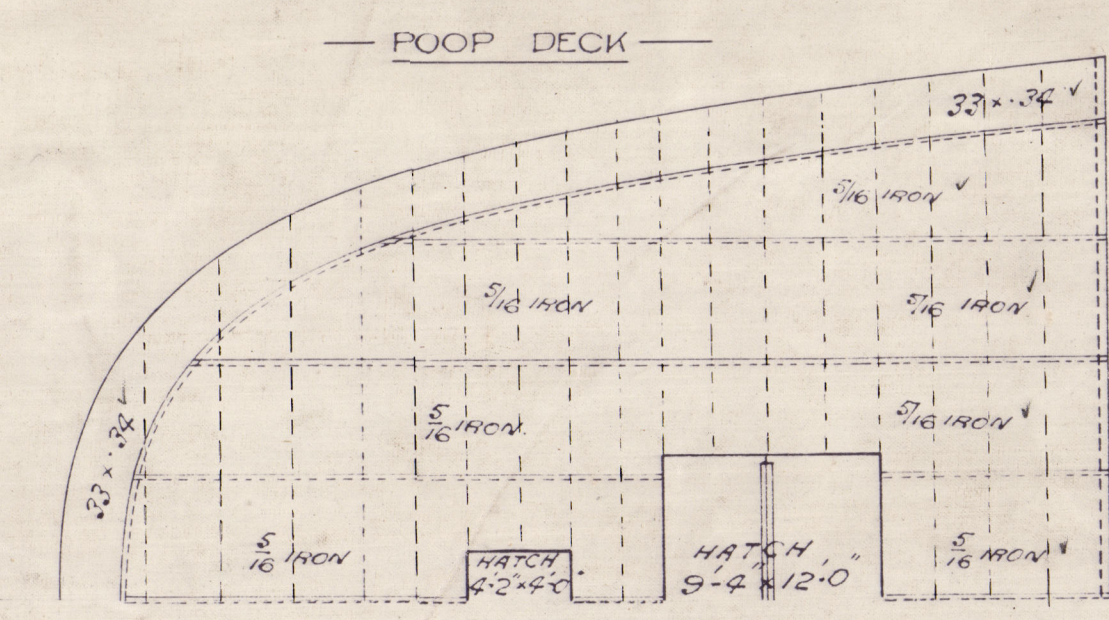
11.10.12  
31-1-13



PARTICULARS FOR FREIGHT

LENGTH (PERPENDICULARS)	363.0'
BREADTH EXTREME	51.0'
DEPTH MOULDED TO UPPER DECK AT MIDDLE OF LENGTH	26.9'
COEFFICIENT (CORRECTED)	26.3'
TONNAGE UNDER UPPER DECK	407.0 TONS
LENGTH OF POOP	32.5' AT SIDE 32.5' AT CENTRE 7.0' HIGH
BRIDGE	109.5' x 112.0'
FORECASTLE	4.3' x 34.3'
SCANTLING	CLASS 100A.1.1
ROUND OF BEAM	12 INCHES
SHEER AFTER SIDE OF STERN POST	4' 6" FORE SIDE OF STEM 8' 6"
LENGTH FROM	2' 42" LENGTH FROM 4' 52"
UPPER DECK NOT SHEATHED WITH WOOD	

— JOHN READHEAD & SONS, L<sup>td</sup>.  
— SHIPBUILDERS & E<sup>rs</sup>.  
— SOUTH SHIELDS.



C.A.  
10.10.12.



J Read head & Son

No 437 & 8

Profile & decks.

437. S/S. "Kronen" Nwc. Rpt. W.

NEWCASTLE-ON-TYNE.

Report No 65202.

Hogland  
LLOYD'S REGISTER OF SHIPPING  
RECEIVED  
2 OCT 1912  
LONDON

S/S. ONWEN

438. S.S.

NEWCASTLE-ON-TYNE

Nwc. Rpt. 65453.

LLOYD'S REGISTER OF SHIPPING  
RECEIVED  
31 JAN 1913

W44-0094



© 2021

Lloyd's Register  
Foundation