

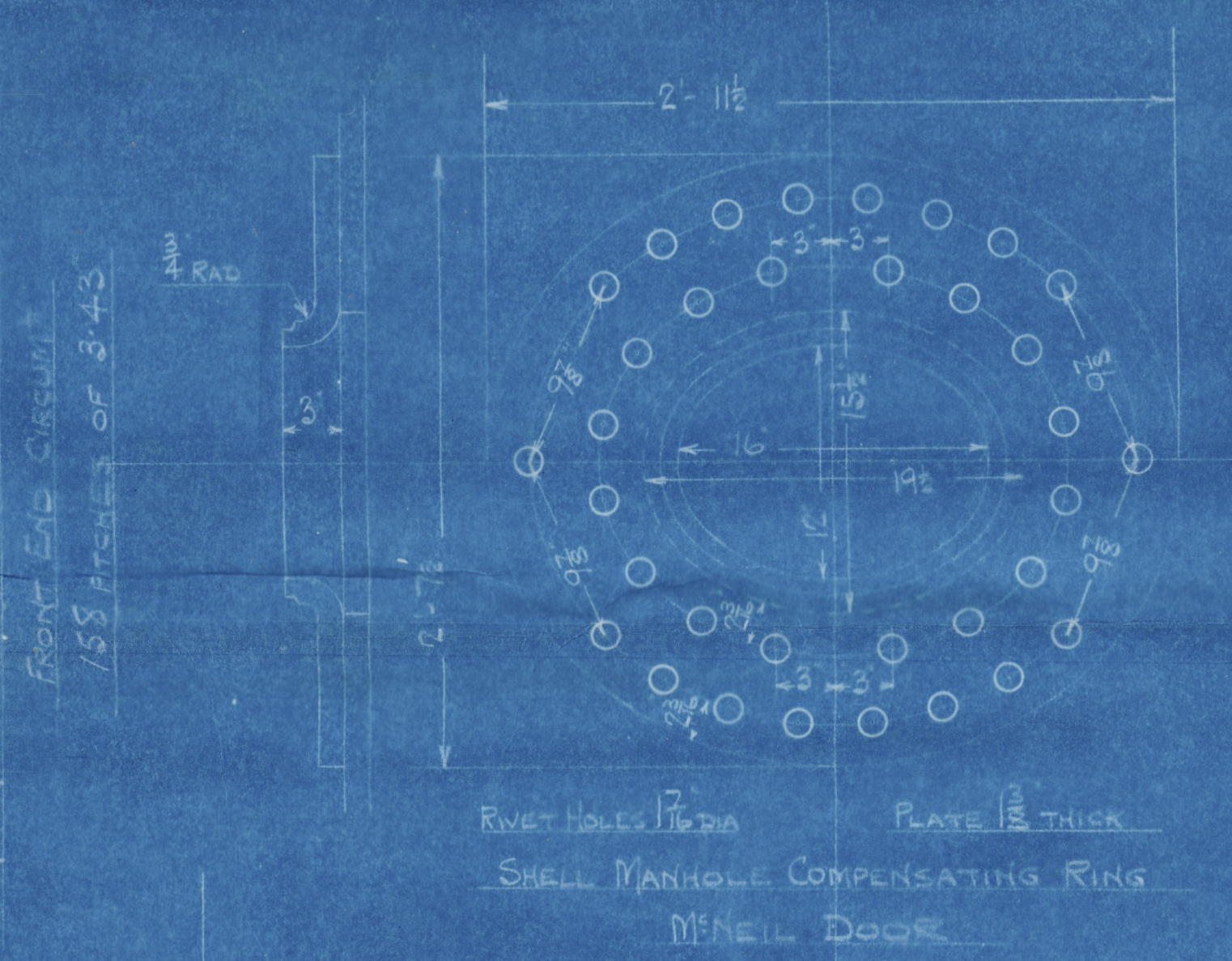
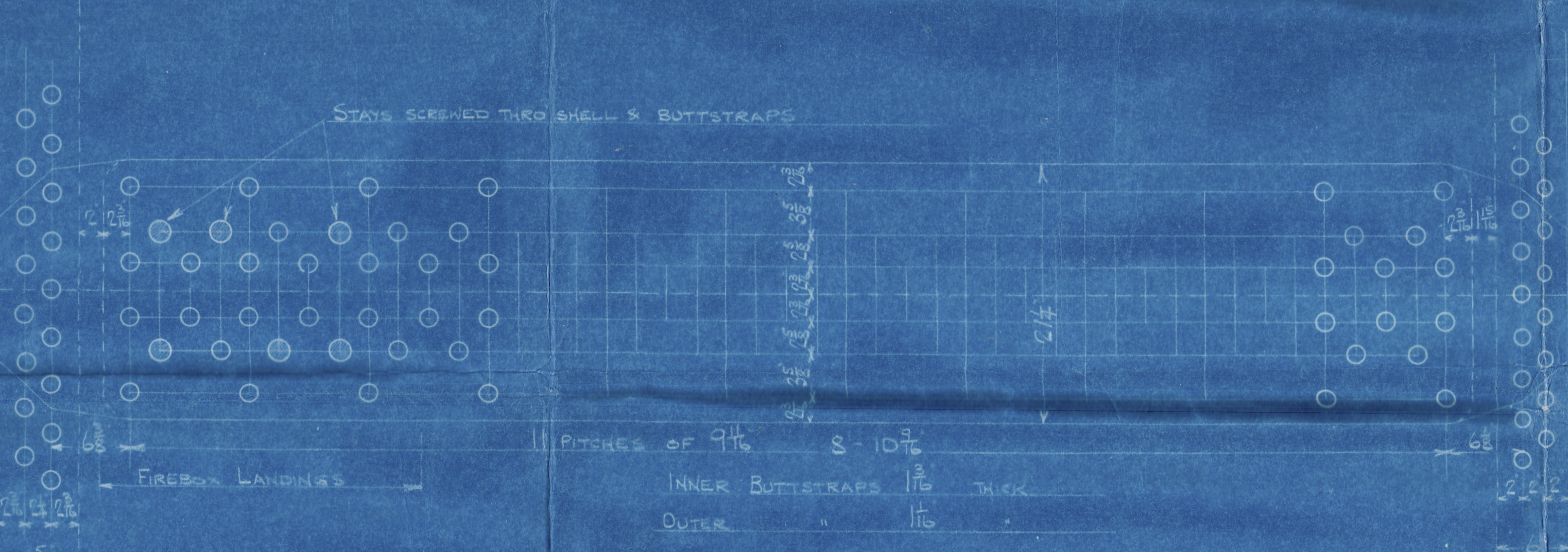
31/3/33
LONDON

SURFACES	ONE BOILER	TWO BOILERS
TUBES	1765 #	3520 #
DRAGON TOP AND SIDES	144	288
BACK	72	144
TUBEPLATE	48	96
FURNACES	47	94
TOTAL HEATING SURFACE	2176 #	4352 #
GRATE AREA (4-6 BARS)	46 1/8	92 1/4
TUBE AREA	1052	2104
WATER AREA	140	280
STEAM SPACE	414 #	828 #
GRATE AREA	HEATING SURFACE	1:4 M
TUBE	1:3826	
AREA	4:36	
WATER	1:216	
STEAM SPACE	1:847	
% BOILER ABOVE FIREBOX	511	
HEIGHT OF WATER	TONS	TONS

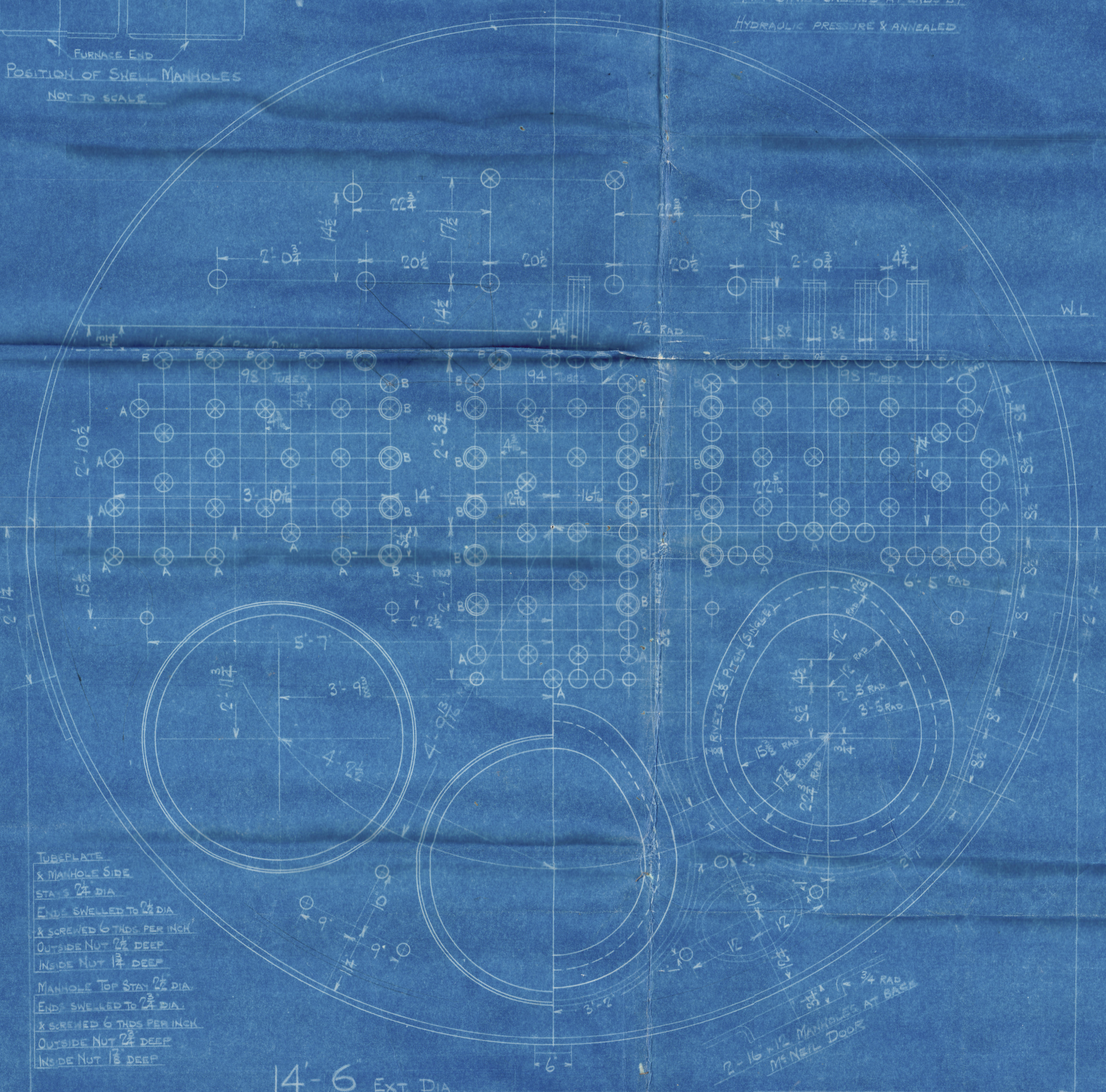
RIVETING		
LONG	BACK END CIRC	FRONT END CIRC
RIVET HOLE DIA	17/16	17/16
PITCH	9 1/4	3:93
% PLATE	55:16	63:4
% RIVET	10:3	47:7
% COMBINED	58:5	45:9

LIMITS OF TENSILE STRENGTH & MATERIAL		
SHELL & BUTSTRAPS	70 TO 80 TONS	
GIRDERS	75 TO 80	
OTHER PLATES	70 TO 80	
FURNACES	75 TO 80	
MAIN STAYS	75 TO 80	
RIVET BARS	75 TO 80	
SEWING STAYS	75 TO 80	
	IRON	

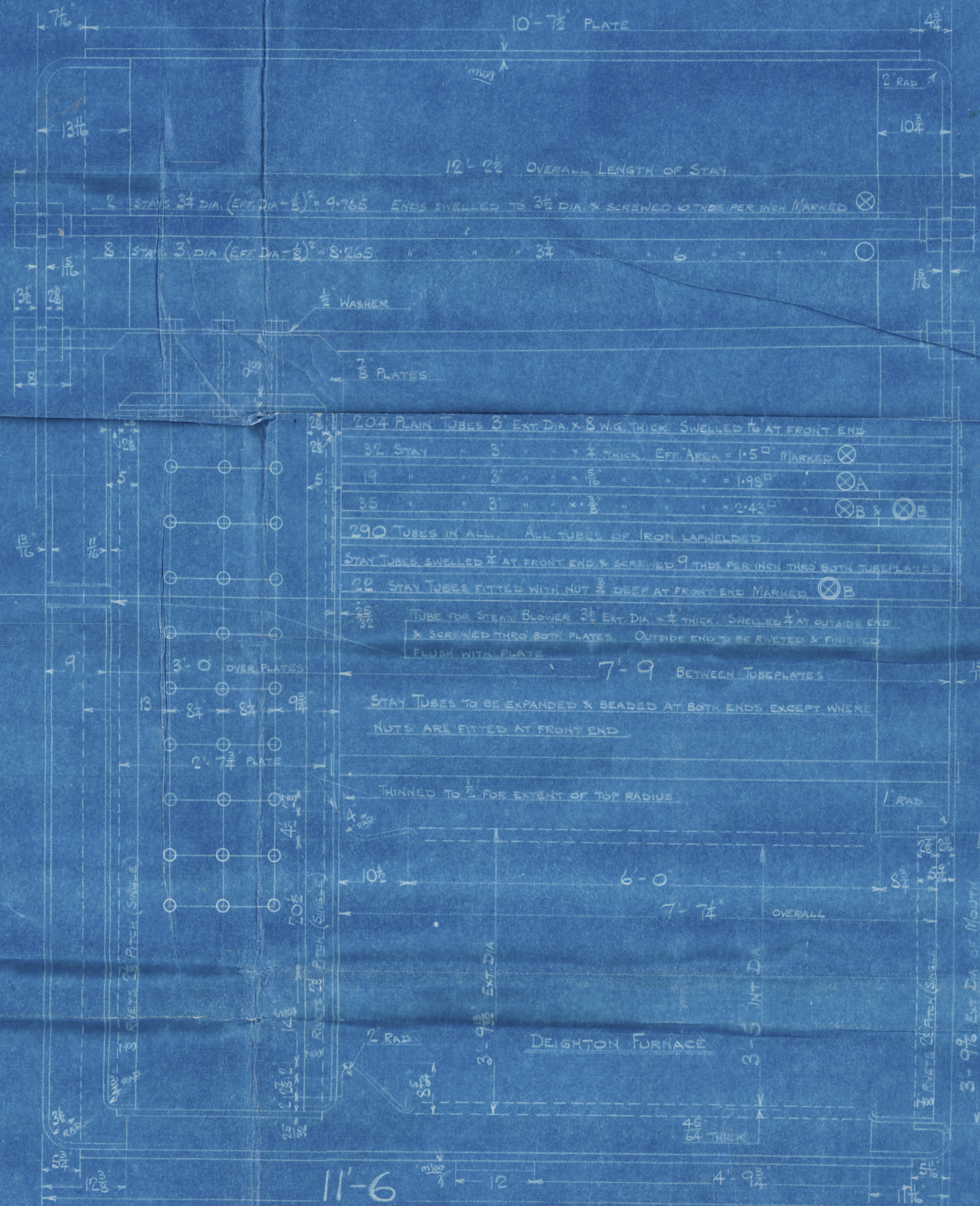
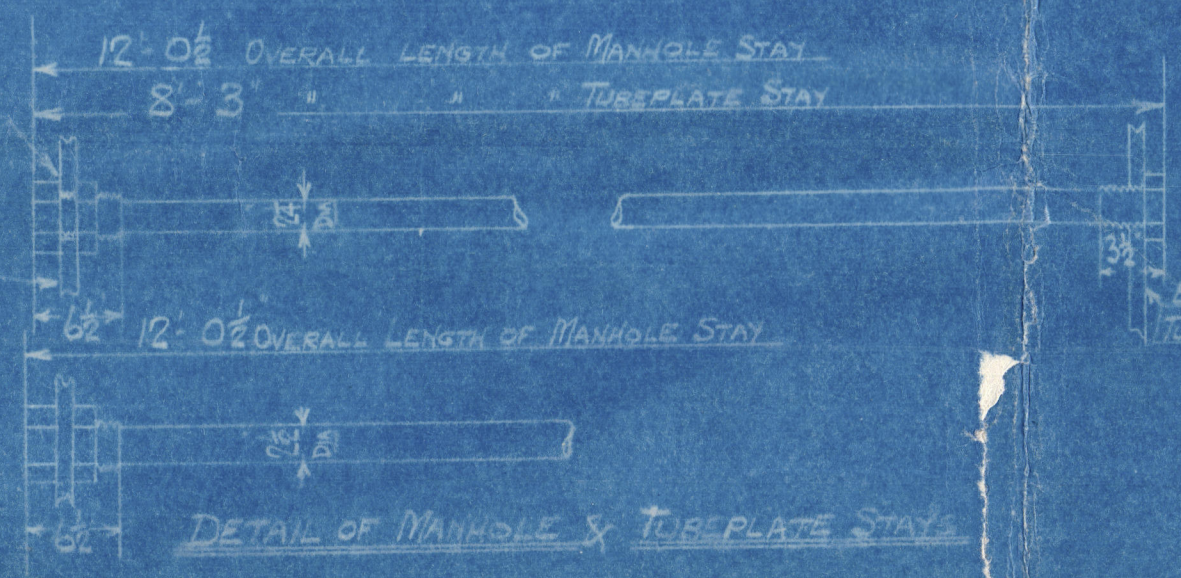
BACK END CIRCUMF
158 PITCHES OF 3:93



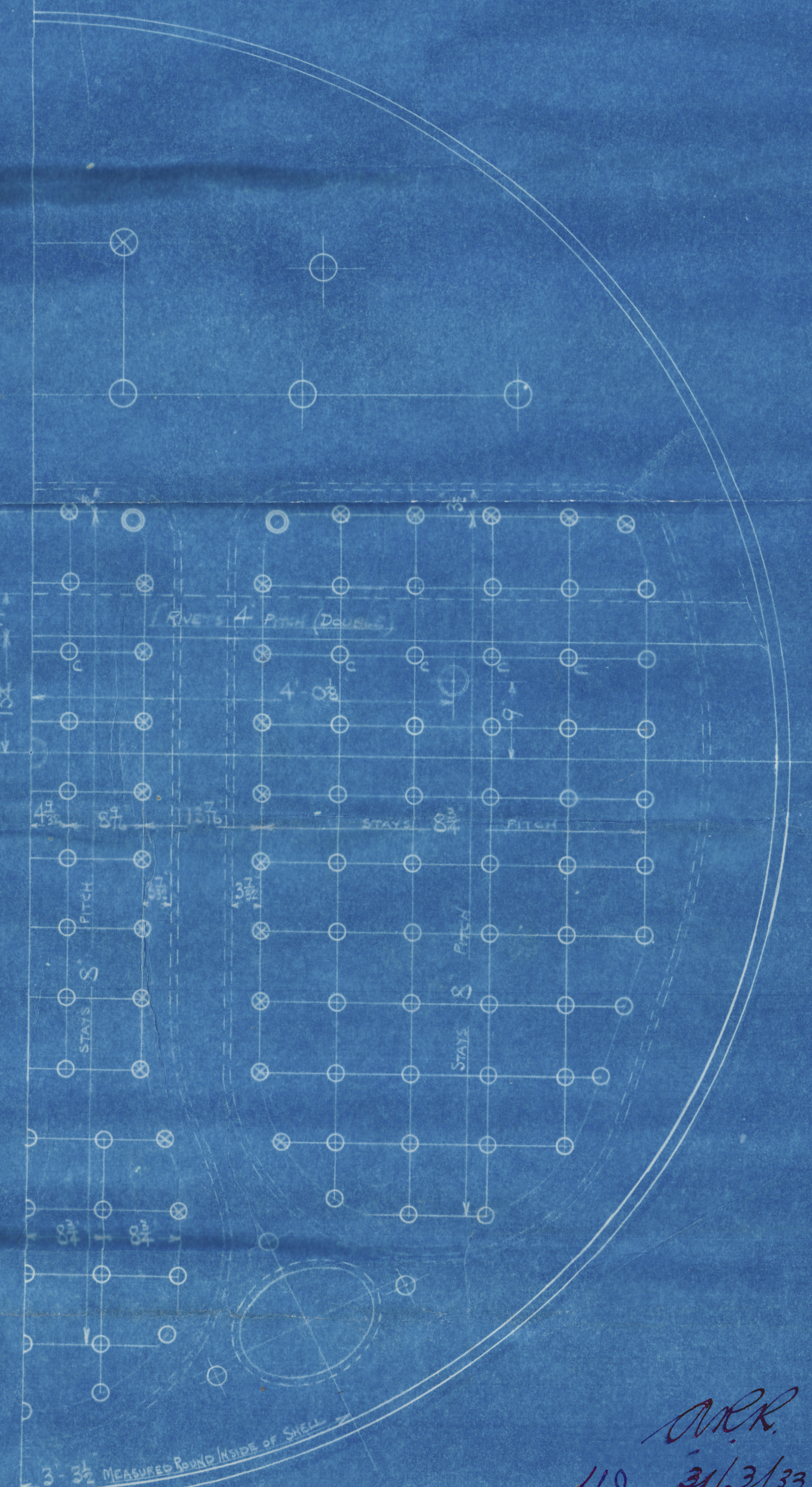
BACK
FURNACE END
POSITION OF SHELL MANHOLES
NOT TO SCALE



TUBEPLATE
& MANHOLE SIDE
STAYS 3/4 DIA
ENDS SWELLED TO 1 DIA
A SKEWED 6 THOS PER INCH
OUTSIDE NOT 1/4 DEEP
INSIDE NOT 1/4 DEEP
MANHOLE TOP STAY 3/4 DIA
ENDS SWELLED TO 1 DIA
A SKEWED 6 THOS PER INCH
OUTSIDE NOT 1/4 DEEP
INSIDE NOT 1/4 DEEP



MAIN BOILER
TWO OFF EACH CONT NO
CONT NO 961-962
WORKING PRESSURE 220 LBS PER SQUARE INCH
TEST 380
TO PASS LLOYD'S SURVEY
SCALE 1/4" = 1 FOOT



POSITION	MARK	DIA	PLATE END	THOS PER INCH
BACK TOP & SIDES	0	1 1/2	2:199	9
BACK WIDE SPACE & TOP ROW	0	2	3:003	9
BACK TOP CORNER	0	2 1/4	3:936	9

ALL FIREBOX STAYS SKEWED THRO BOTH PLATES AND NOT FITTED AT EACH END EXCEPT STAYS FROM WING FIREBOX TO SHELL AND STAYS MARKED C IN BACK BOTTOM END WHICH PROTECT S AND ARE COULDED ALL 1/4 NUTS 1/4 DEEP EXCEPT ON GIRDER TOPS WHERE THE OUTSIDE NUTS ARE 1/4 DEEP
ALL 2 NUTS 1 DEEP ALL 1/4 NUTS 1/4 DEEP
WASHERS AT ENDS OF FIREBOX STAYS IN FIREBOX

OKK
1/28 31/3/33

OT 37208.A
R
W44-0079

GLASGOW

DAVID ROWAN & CO

(2) BOLLERS N° 962

DUPLICATE OF N° 961

WP. 220 LBS

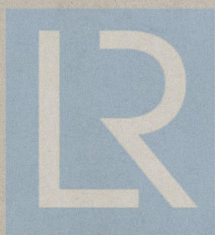
LITHGOWS' 8/8 N° 865

Hartlebury

GLASGOW REPORT No. 54332

Grk. 19723.

W44-0079



© 2021

Lloyd's Register
Foundation