

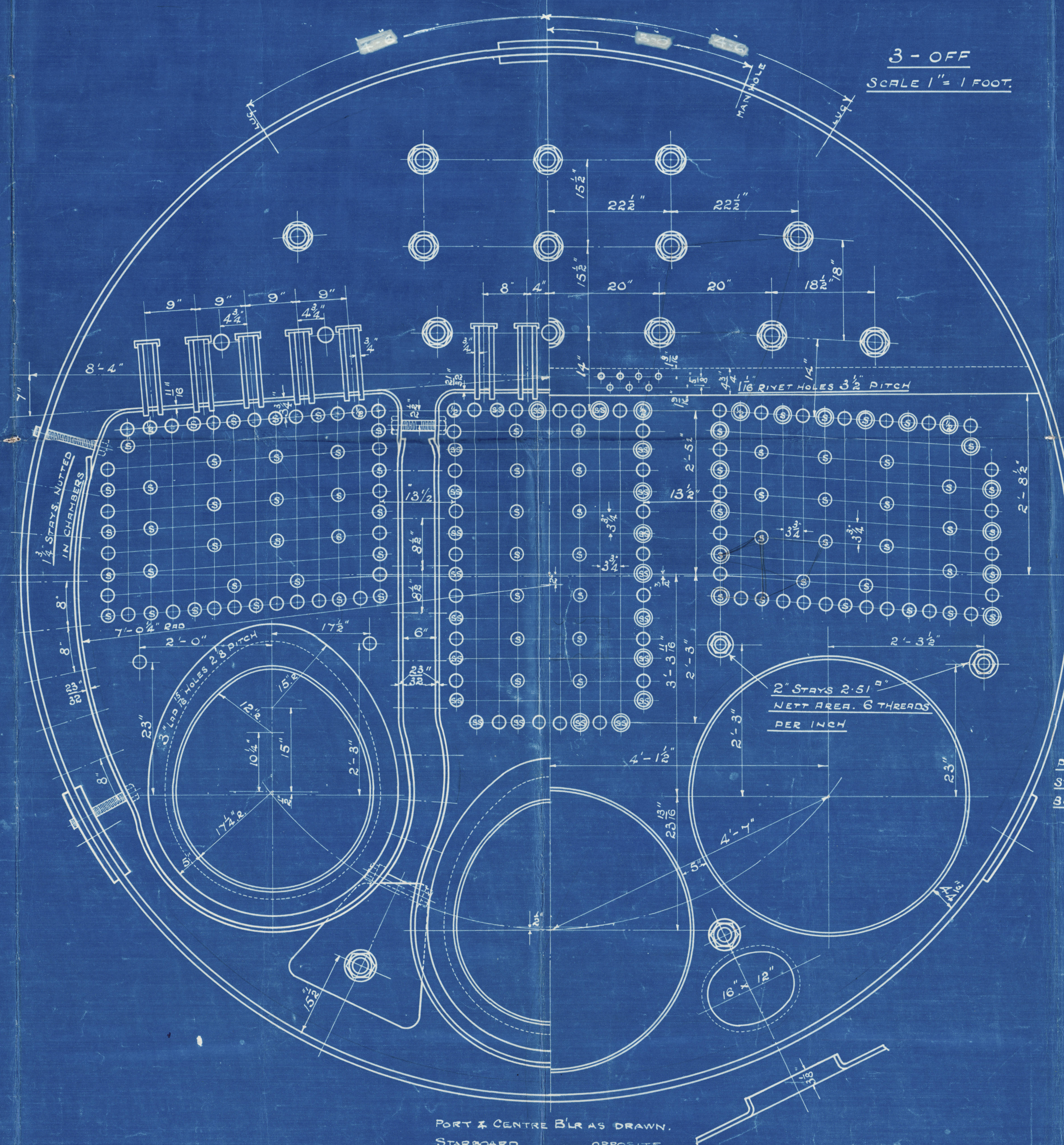
987 PLAIN TUBES (WORKING) 8'-5" 8 B.W.G THICK  
13 " " (SPARE)

150 STAY TUBES 8'-5" 5/16" THICK

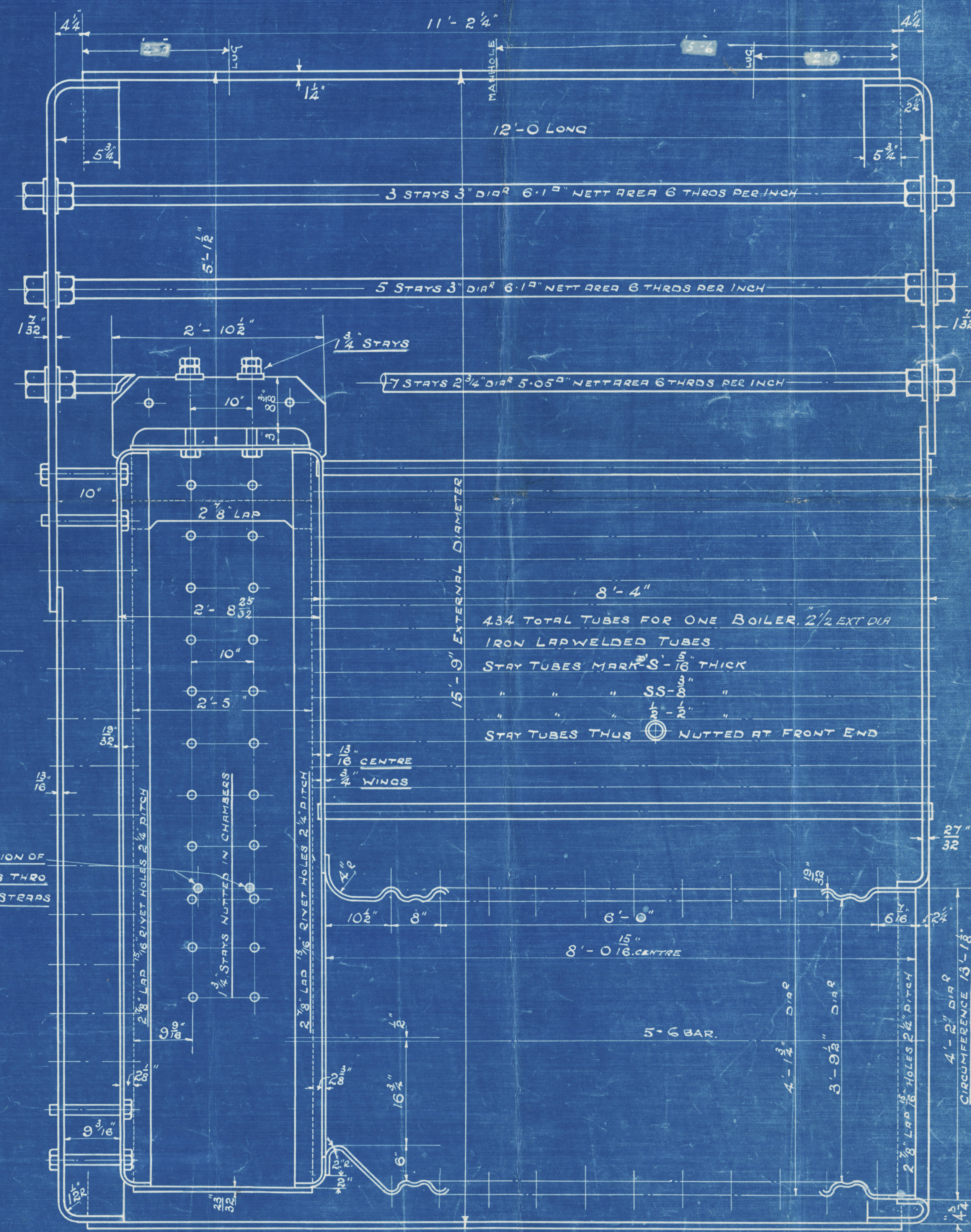
84 STAY TUBES 8'-5 1/2" 5/16" THICK  
63 " " 5/16" THICK

18 STAY TUBES 8'-5 1/2" 1/2" THICK

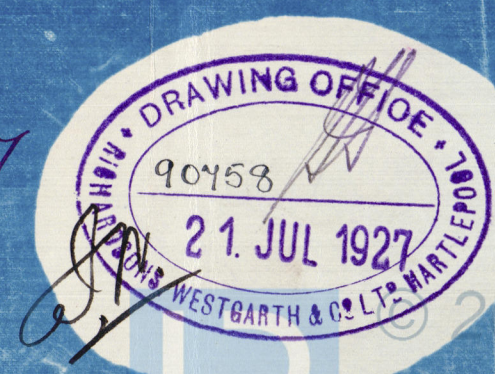
STAY TUBES SCREWED 9 THREADS PER INCH  
IN A CONTINUOUS THREAD



### POSITION OF STAYS THROUGH BUTT STEPPS



**BOILERS N° S 2195**



W439-0201

16087



MAIN BOILERS.

RICHARDSONS WESTGARTH LD

ENG. No S 2195.

WM DOXFORD & SONS LD

S.S. No. 586.

NO 3717  
Lloyds Test  
320 lbs  
WP 180 lbs  
27.10.27 AD

*W. H. L. Report No. 16582*

S. S. "CARICA MILICA

SUNDERLAND RPT. NO.

29638.

RETAIN



© 2020

Lloyd's Register  
Foundation

W439-0201



RETAIN

RETAIN



© 2020

Lloyd's Register  
Foundation