

~~Nº 29607~~

~~PARTICULARS RELATING TO ALL STEAM SHIPS EITHER FLUSH DECKED, OR WITH TOP GALLANT FORECASTLES, SHORT POOPS AND BRIDGE HOUSES DISCONNECTED, OR WITH TOP GALLANT FORECASTLES HAVING LONG POOPS, OR RAISED QUARTER DECKS CONNECTED WITH BRIDGE HOUSES, OR OTHERWISE.~~

Port of Survey *Sunderland.*
Date of Survey *Whilst building Jan 6th 1928.*
Name of Surveyor *W. P. Collings.*

Ship's Name.	Port of Registry and Nationality.	Official Number.	Gross Tonnage.	Date of Build.	Particulars of Classification.
"CARICA MILICA"	<i>Sutrovnik</i> <i>Yugo Slavia</i>		<i>6400</i>	<i>1928.</i>	<i>F 100 A. 1. (contemplated)</i>
Number in Register Book					

Registered dimensions from Ship's Register.	LENGTH.	BREADTH.	DEPTH.	UNDER DECK TONNAGE.
	425.0	56.10	29.30	5859.75
Length on LOADLINE.	424.5	Frame Depth $\frac{10}{16}$ Ceiling $\frac{70}{16}$ + 20 Rule $\frac{64}{16}$ Sheer + 1.39 Tanks $= 2 \times \frac{43\frac{1}{2}}{16}$ "drop in $= - .66$ tank. + .20 sparring $\frac{58}{16}$ fitted ✓	Peak } Incl. $\frac{10}{16}$ Frames For 7 1/2 Frames in Tween Decks - 12.5 Tons	
CORRECTED DIMENSIONS.	424.5 ✓	55.44 52	31.09 ✓	5859.75 5844.25

Moulded Depth as measured..... 31'- 10"

Addition for Keel below base line
for draught record..... $2\frac{1}{4}$inches.

NOTE. — If the depth is measured when vessel is afloat, the details of measurement should be reported.

CORRECTION FOR LENGTH.

Length of Ship on Loadline.....	424.50		
Length in Table	<u>382.00</u>		
Difference	42.50	-	
Correction for 10ft., Table A.	1.6		Table C. .8 -
× Difference divided by 10	6.8	-	(if required.) 3.4 -
If $\frac{6}{10}$ ths length covered divide by 2	+ 63	$\frac{3}{4}$ -	+ 3 $\frac{1}{2}$ "

CORRECTION FOR IRON DECK.

Proportion covered, if less than $\frac{7}{16}$ ths length covered 50²19
Thickness of usual wood deck, less stringer 3 $\frac{1}{2}$ - 13

CORRECTION FOR ROUND OF BEAM.

Breadth at Gunwale amidships.....	55-3
Round of Beam	14
Normal round.....	14
Difference	÷ 2 =
Proportion of Deck uncovered (Para. 19)	

NOTE. — The round of beam should be reported on the full breadth of vessel at the beam.

Do-efficient of fineness..... ~~808~~ 798
 Any modification necessary } ~~02~~ C.D.B
 [Para. 4 (a) to (e)]* }
 Do-efficient as corrected ~~788~~ 798
 .78

Shear at { Stem..... 144 } $204 \div 2 = 102$... Mean
 at { Sternpost ... 60 }

Shear at $\frac{1}{8}$ of the length from { Stem 80 } $113 \div 2 = 56.5$... Mean
 { Sternpost 33 }

Gradual mean Shear $\frac{102.0 + 102.72}{2} = 102.36$ $\div 55\% = 102.72$

Standard mean Shear [Table, Para. 18] 52.45 Correction

Difference..... $49.91 \div 4 = 12.47$

§ If limited as Para. 18 (f) -12.2

Rise in Sheer { At front of bridge house.....
from amidships {
[Para. 18 (e)] { At after end of forecastle

Fall in Sheer } $\div 2 =$
 Para. 18 (d) }
 Length uncovered

ALLOWANCE FOR DECK ERECTIONS :—

Freeboard, Table C.....	5 " 2 1/2 ^{1/4}
Correction for Length, if required (Para. 12, 13 , and 14)	+ 2 1/2
	5 " 5 1/4
Freeboard by Table A. corrected for sheer, and for length, {	
if required (Para. 12, 13 , and 14) }	4 " 1 1/4
Difference	2 " 5 1/4 ¹⁶
Percentage as below.....	32 152
	<hr/> 9.40

$$\frac{32.152 + 29.25}{100} =$$

Correction for R. Q. Dk. if engine and boiler openings not covered by bridge house (Para. 11)

Allowance for Deck Erections

	Length.	Length allowed.	Height.
orecastle.....	35'-3"	35.25 ✓	8'-6"
ridge House.....	142'-7"	142.58 ✓	8'-6"
Raised Gr. Dk.....			
oop.....	35'-3"	35.25 ✓	8'-6"
Total.....		213.08 ✓	50'-0" ²
Length of Ship.....		424.5	

Corresponding percentage
(Para. ~~11~~, 12, ~~13~~, or ~~14~~)

REEBOARD recommended amidships from centre of Disc to top of Statutory Deck Line, ~~Wood~~ (Steel) Deck :—

Fresh Water Line above centre of Disc
 Indian Summer Line " " "
 Winter Line below " "
~~Winter-North Atlantic Line~~

JAN 1978

If the frames, skin planking, or ceiling are of unusual thickness the breadth of vessel to inside of ceiling should be reported if possible.

In vessels obtaining an allowance for deck erections under Para. 11 where the sheer drops abaft amidships the height of the R.Q.D. is to be taken from the level of the top of the amidship beam.

In flush-decked vessels the total standard mean sheer means the sheer measured at the stem and stern-post. In vessels having poops and forecastles, it means the sheer measured at points distant one-eighth of the vessel's length from stem and stern-post.

3m, 9, 24. T.

* State dimensions of freeing port area on back of this form.

The Surveyor should state whether the fall in sheer as reported is measured relatively to the straight line of keel or to the water line. If measured relatively to water line the angle of trim at time of

ey, and also the usual load

survey,
13640
Sept 8, 1880

W439-0195

© 2020

ashed relatively to the straight
the (1) (2) (3) (4) (5) (6) (7) (8) (9) (10) (11) (12) (13) (14) (15) (16) (17) (18) (19) (20) (21) (22) (23) (24) (25) (26) (27) (28) (29) (30) (31) (32) (33) (34) (35) (36) (37) (38) (39) (40) (41) (42) (43) (44) (45) (46) (47) (48) (49) (50) (51) (52) (53) (54) (55) (56) (57) (58) (59) (60) (61) (62) (63) (64) (65) (66) (67) (68) (69) (70) (71) (72) (73) (74) (75) (76) (77) (78) (79) (80) (81) (82) (83) (84) (85) (86) (87) (88) (89) (90) (91) (92) (93) (94) (95) (96) (97) (98) (99) (100) (101) (102) (103) (104) (105) (106) (107) (108) (109) (110) (111) (112) (113) (114) (115) (116) (117) (118) (119) (120) (121) (122) (123) (124) (125) (126) (127) (128) (129) (130) (131) (132) (133) (134) (135) (136) (137) (138) (139) (140) (141) (142) (143) (144) (145) (146) (147) (148) (149) (150) (151) (152) (153) (154) (155) (156) (157) (158) (159) (160) (161) (162) (163) (164) (165) (166) (167) (168) (169) (170) (171) (172) (173) (174) (175) (176) (177) (178) (179) (180) (181) (182) (183) (184) (185) (186) (187) (188) (189) (190) (191) (192) (193) (194) (195) (196) (197) (198) (199) (200) (201) (202) (203) (204) (205) (206) (207) (208) (209) (210) (211) (212) (213) (214) (215) (216) (217) (218) (219) (220) (221) (222) (223) (224) (225) (226) (227) (228) (229) (230) (231) (232) (233) (234) (235) (236) (237) (238) (239) (240) (241) (242) (243) (244) (245) (246) (247) (248) (249) (250) (251) (252) (253) (254) (255) (256) (257) (258) (259) (260) (261) (262) (263) (264) (265) (266) (267) (268) (269) (270) (271) (272) (273) (274) (275) (276) (277) (278) (279) (280) (281) (282) (283) (284) (285) (286) (287) (288) (289) (290) (291) (292) (293) (294) (295) (296) (297) (298) (299) (300) (301) (302) (303) (304) (305) (306) (307) (308) (309) (310) (311) (312) (313) (314) (315) (316) (317) (318) (319) (320) (321) (322) (323) (324) (325) (326) (327) (328) (329) (330) (331) (332) (333) (334) (335) (336) (337) (338) (339) (340) (341) (342) (343) (344) (345) (346) (347) (348) (349) (350) (351) (352) (353) (354) (355) (356) (357) (358) (359) (360) (361) (362) (363) (364) (365) (366) (367) (368) (369) (370) (371) (372) (373) (374) (375) (376) (377) (378) (379) (380) (381) (382) (383) (384) (385) (386) (387) (388) (389) (390) (391) (392) (393) (394) (395) (396) (397) (398) (399) (400) (401) (402) (403) (404) (405) (406) (407) (408) (409) (410) (411) (412) (413) (414) (415) (416) (417) (418) (419) (420) (421) (422) (423) (424) (425) (426) (427) (428) (429) (430) (431) (432) (433) (434) (435) (436) (437) (438) (439) (440) (441) (442) (443) (444) (445) (446) (447) (448) (449) (450) (451) (452) (453) (454) (455) (456) (457) (458) (459) (460) (461) (462) (463) (464) (465) (466) (467) (468) (469) (470) (471) (472) (473) (474) (475) (476) (477) (478) (479) (480) (481) (482) (483) (484) (485) (486) (487) (488) (489) (490) (491) (492) (493) (494) (495) (496) (497) (498) (499) (500) (501) (502) (503) (504) (505) (506) (507) (508) (509) (510) (511) (512) (513) (514) (515) (516) (517) (518) (519) (520) (521) (522) (523) (524) (525) (526) (527) (528) (529) (530) (531) (532) (533) (534) (535) (536) (537) (538) (539) (540) (541) (542) (543) (544) (545) (546) (547) (548) (549) (550) (551) (552) (553) (554) (555) (556) (557) (558) (559) (560) (561) (562) (563) (564) (565) (566) (567) (568) (569) (570) (571) (572) (573) (574) (575) (576) (577) (578) (579) (580) (581) (582) (583) (584) (585) (586) (587) (588) (589) (590) (591) (592) (593) (594) (595) (596) (597) (598) (599) (600) (601) (602) (603) (604) (605) (606) (607) (608) (609) (610) (611) (612) (613) (614) (615) (616) (617) (618) (619) (620) (621) (622) (623) (624) (625) (626) (627) (628) (629) (630) (631) (632) (633) (634) (635) (636) (637) (638) (639) (640) (641) (642) (643) (644) (645) (646) (647) (648) (649) (650) (651) (652) (653) (654) (655) (656) (657) (658) (659) (660) (661) (662) (663) (664) (665) (666) (667) (668) (669) (670) (671) (672) (673) (674) (675) (676) (677) (678) (679) (680) (681) (682) (683) (684) (685) (686) (687) (688) (689) (690) (691) (692) (693) (694) (695) (696) (697) (698) (699) (700) (701) (702) (703) (704) (705) (706) (707) (708) (709) (710) (711) (712) (713) (714) (715) (716) (717) (718) (719) (720) (721) (722) (723) (724) (725) (726) (727) (728) (729) (730) (731) (732) (733) (734) (735) (736) (737) (738) (739) (740) (741) (742) (743) (744) (745) (746) (747) (748) (749) (750) (751) (752) (753) (754) (755) (756) (757) (758) (759) (760) (761) (762) (763) (764) (765) (766) (767) (768) (769) (770) (771) (772) (773) (774) (775) (776) (777) (778) (779) (780) (781) (782) (783) (784) (785) (786) (787) (788) (789) (790) (791) (792) (793) (794) (795) (796) (797) (798) (799) (800) (801) (802) (803) (804) (805) (806) (807) (808) (809) (810) (811) (812) (813) (814) (815) (816) (817) (818) (819) (820) (821) (822) (823) (824) (825) (826) (827) (828) (829) (830) (831) (832) (833) (834) (835) (836) (837) (838) (839

Do all the Frames extend to the top height in the Poop? *yes* Raised Quarter Deck? *yes* Bridge House? *alternate* Forecastle? *yes*
 To what height do the Reverse Frames extend? *To upper dk way of after peak only.* *elsewhere Bulk angles*
 Has the Poop or Raised Quarter Deck an efficient Iron Bulkhead at the fore end? *yes*
 Give particulars of the means for closing the openings in Bulkhead *no openings*
 Is the Poop or Raised Quarter Deck connected with the Bridge House? *no* Has the Bridge House an efficient Bulkhead at the fore end? *yes*
 Give particulars of the means for closing the openings in Bulkhead *Steel hinged doors. (two)*
 What is the thickness of the Bridge Front plating? *40* and Coaming plate? *44*
 Give scantlings and spacing of the Stiffeners *9 x 3 1/2 x 46 BA @ 30"*
 Are bracket plates fitted at each end of the Stiffeners? *yes* Are hor'l. brackets fitted connecting Bridge Bulk'd. with Bulwarks? *Rail bar ca up sweep of plate connected Bridge sheer. in line.*
 Has the Bridge House an efficient Iron Bulkhead at the after end? *yes*
 How are the openings closed? *storm boards in riveted channels full height.*
 Is the Forecastle at least as high as the main or top-gallant rail? *yes* Has the Forecastle an efficient Iron or Wood Bulk'd. at after end? *yes*
 Are the Engine and Boiler openings covered by a Bridge, Poop, Raised Quarter Deck, or enclosed by a Strong Iron or Steel Deckhouse? *Covered by a Bridge*
 If the openings are not so protected are the exposed parts of the Casings efficiently constructed? *yes*
 Give thickness of plating; scantlings and spacing of Stiffeners
 What is the height of the exposed Casings? *yes* Are suitable means provided for closing all openings in them in bad weather? *yes*

Are the Weather Deck Hatchways efficiently constructed and at least equal to the requirements of Section 28 of the Rules for 1904-5? Give particulars below:—

Position and Size.	701-33-9 x 22-0	702-36-3 x 22-0	703-29-0 x 22-0	704-33-10 x 22-0	705-31-5 x 22-0
Item.	Ship.	Rule.	Ship.	Rule.	Ship.
Height above top of DECK	36"	Do	36"	Do	36"
Thickness	56"	Do	58"	Do	50"
Sides	56"	Do	58"	Do	50"
Ends	44"	Do	44"	Do	44"
SHIFTER BEAMS OR WEB PLATES	Number 6	Do	19 1/2 x 36	Do	19 1/2 x 36
Section and Scantlings	18 1/2 x 36	Do	4 1/2 x 3 x 46	Do	4 1/2 x 3 x 46
Material	Steel	Do	Steel	Do	Steel
FORE AND AFTERS	Number	Do	Number	Do	Number
Section and Scantlings	✓	✓	✓	✓	✓
Material	✓	✓	✓	✓	✓
HATCHES Thickness	3"	Do	3"	Do	3"
Remarks	ford	ford	ford	ford	ford

* The depth of Fore and Afters should be stated from the underside of the hatches in all cases.

(If the sill of the lowest side scuttle will be less than 6 inches above the Indian Summer Load Line if assigned under the tables, state vertical distance from top of deck at side amidships to lower edge of lowest side scuttle.)

The following information is to be given in all Cases of vessels dealt with under Paras. 11, 12 (under 15 feet Moulded depth) and under Shelter Deck Rules.
 What is the thickness of the Bridge Sheerstrake? *Strake between Main and Bridge Sheerstrakes?*

Delete the words { The Crew are, are not, berthed in the bridge house.
 that do not apply { The arrangements to enable them to get backwards and forwards from their quarters are, are not satisfactory.

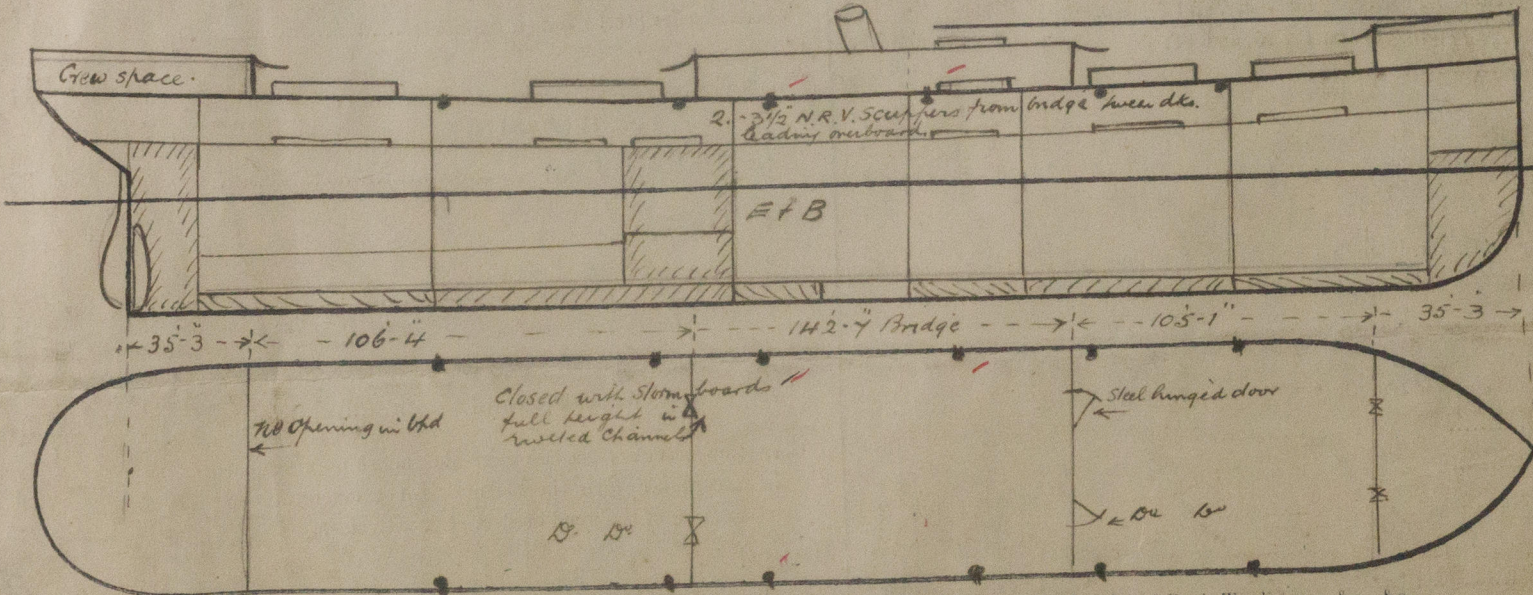
Length of Bulwarks in well *105'-1" ford. 106'-4" aft.*

Area of Freeing Ports required by Para. 11 (e) each side of vessel = *42.3* Sq. ft.

	Ft.	Tenths.	Ft.	Tenths.	No.
Ford	3-0	0	1-8	0	5
aft	3-0	0	1-8	0	5

Freeing Ports (each side of vessel) = *42.4* Sq. ft.

Total deficiency or excess = *0.1* Sq. ft.



Show hereon line of Floors or Tank Top with position of any Breaks in same; also height of Peak Tank tops, &c., &c.

State any special features in the construction of the Vessel *no special features*

Builder's name and yard number *Wm Daxford Sons Ltd No 586.*

Names of sister vessels *✓*

Owners *The Atlantic Navigation & Trading Co Ltd*

Address *54 Leadenhall St. London*

Fee £ *11* Received by me *See F.B. Rpt.*

Can be charged on completion



Lloyd's Register Foundation

Draft at 25'-6 1/2" = 136
 Tons per inch 48.4
 Request form attached