

9.2.26.

PROFILE & DECK PLAN.

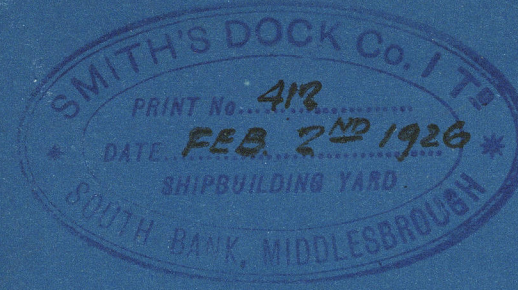
STEEL SCREW STEAMER.

TO CLASS 100 A.I. LLOYDS.

DIMENSIONS 305'0" B.P. x 45'3 1/2" BREADTH MLD. x 23'6" DEPTH MLD.

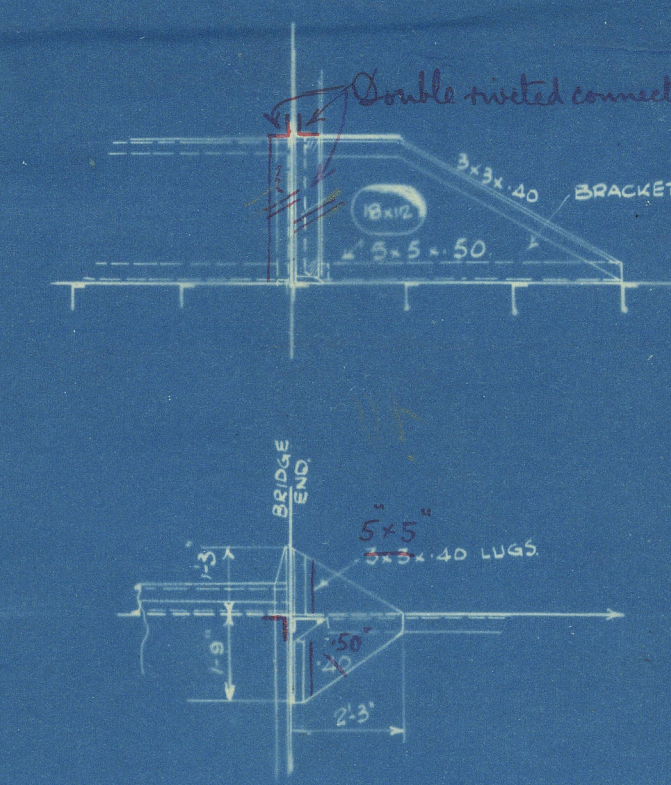
SCALE 1" = 10'.

NOTE 1:- NEW BRITISH STANDARD BULB ANGLES ARE ADOPTED.

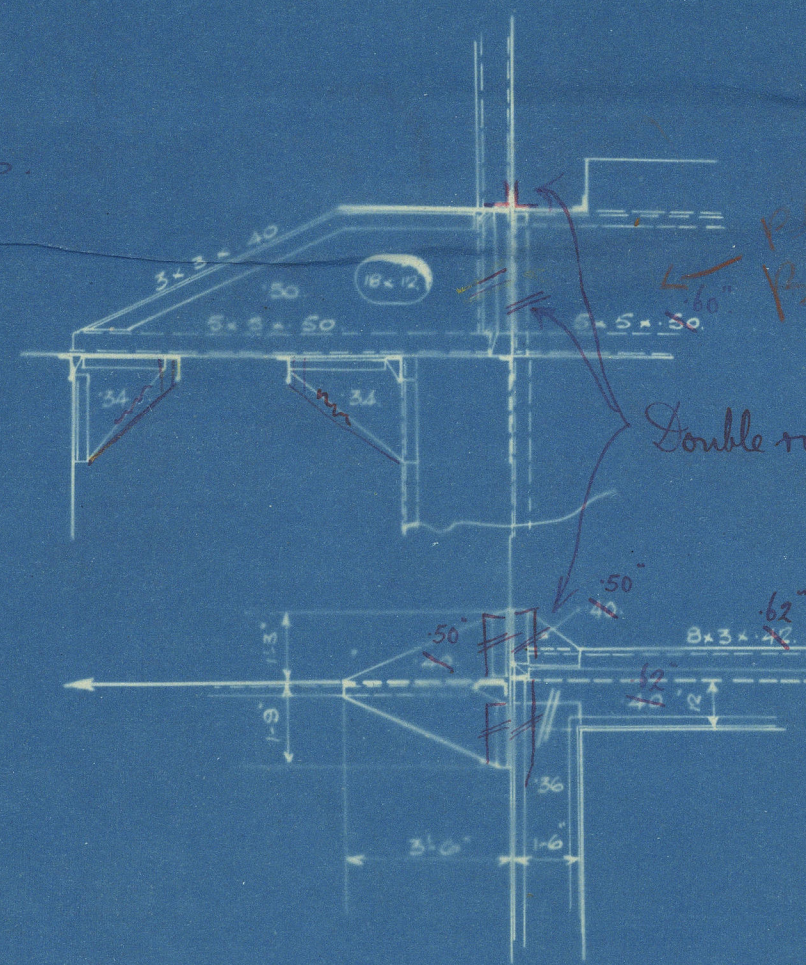


This plan has been approved by the Board of Lloyd's Register of Shipping on the basis of the particulars submitted by the Builder to the Board of Lloyd's Register of Shipping on the 10th Nov. 1925.

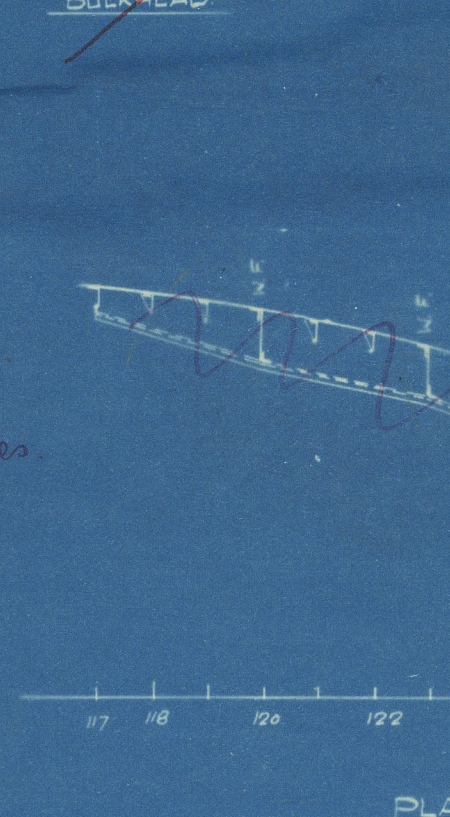
DETAIL OF HATCH SIDE GIRDER END AT BRIDGE END SCALE 1" = 10'.



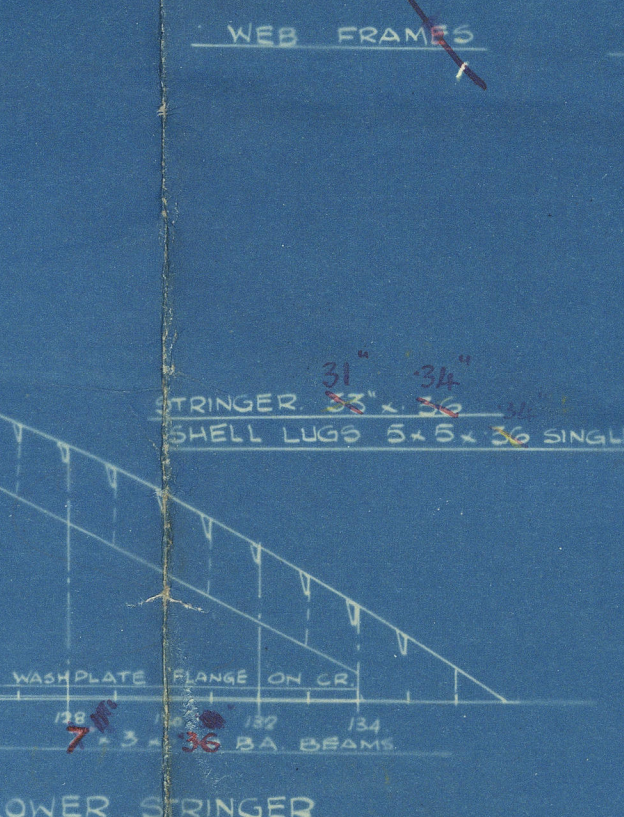
DETAIL OF HATCH SIDE GIRDER END AT BRIDGE FRONT SCALE 1" = 10'.



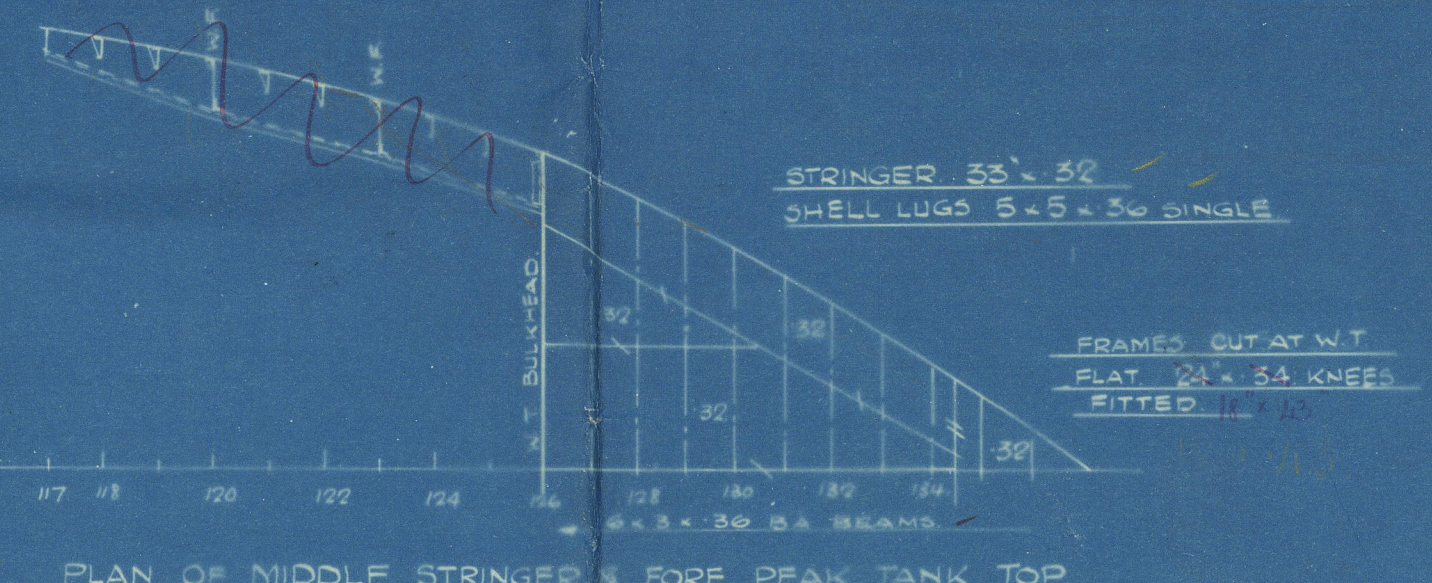
STRONGER ABAYT COLLISION BULKHEAD



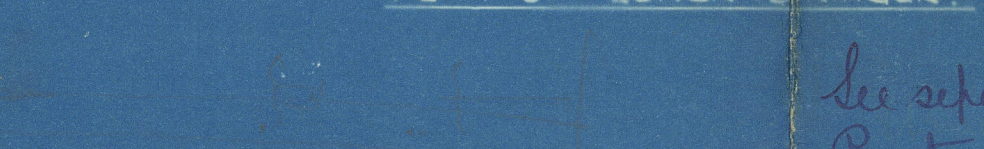
STRONGER 31" x 30" SHELL LUGS 5" x 5" x 30" SINGLE



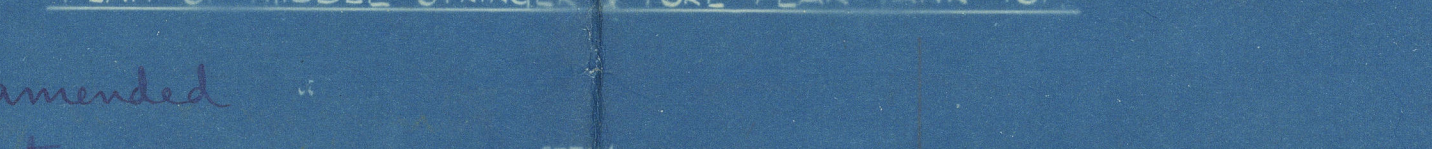
PLAN OF UPPER STRINGER



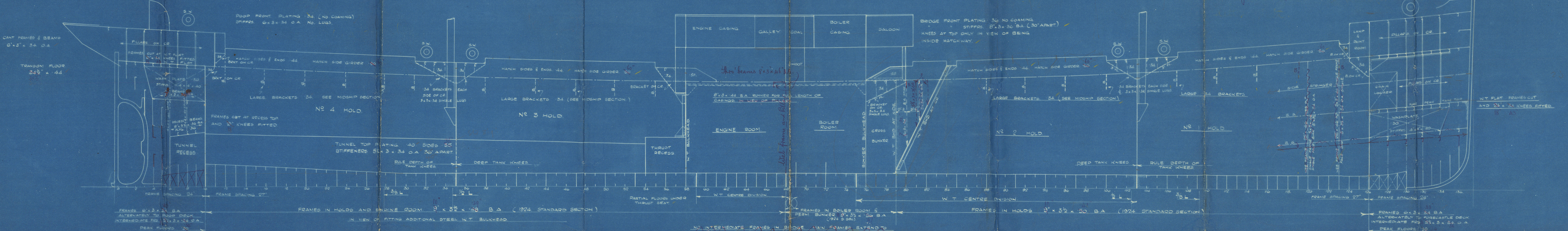
PLAN OF LOWER STRINGER



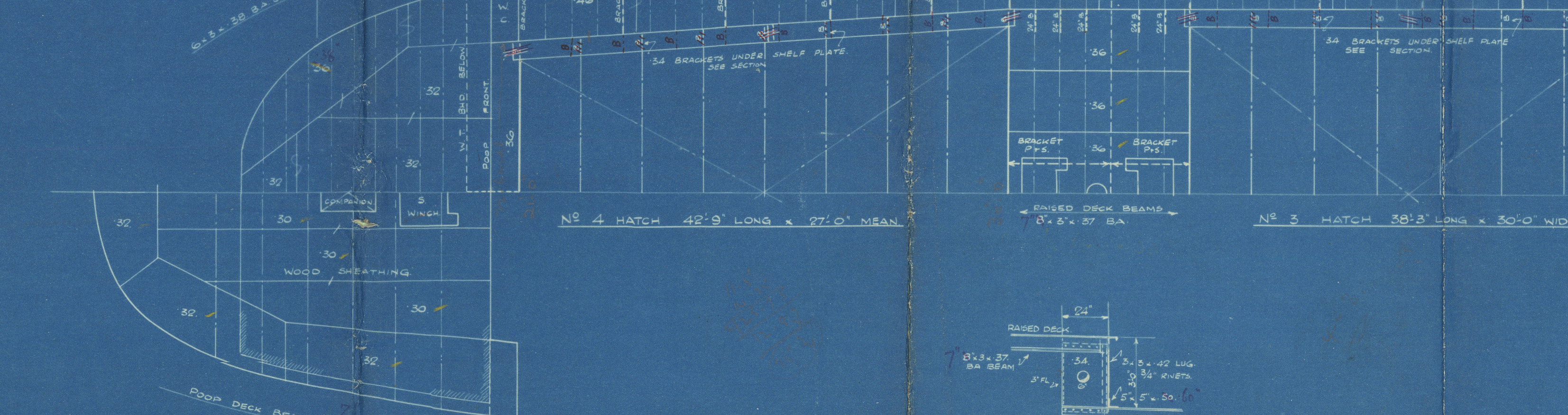
PLAN OF MIDDLE STRINGER & FORE PEAK TANK TOP



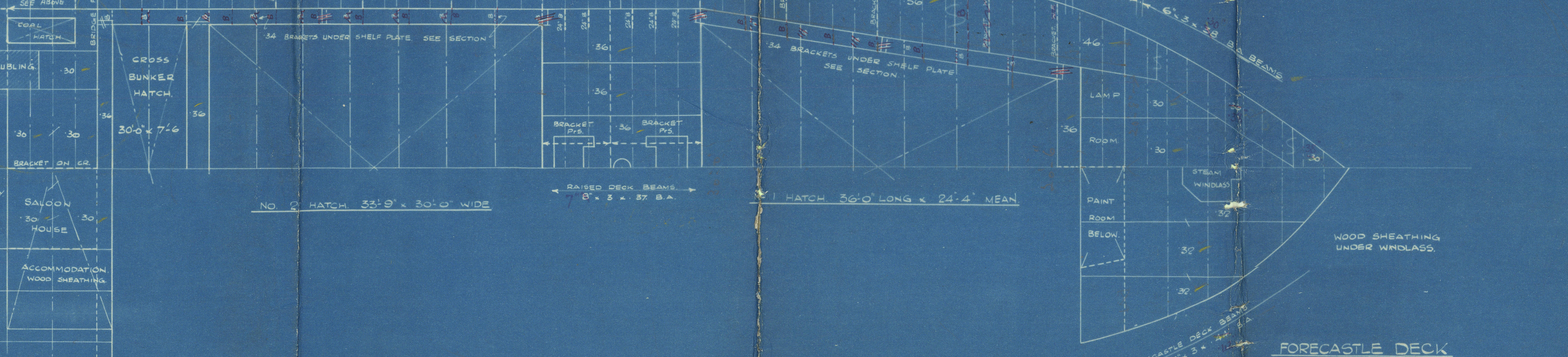
See separate plan for amended Parting Arrangements.



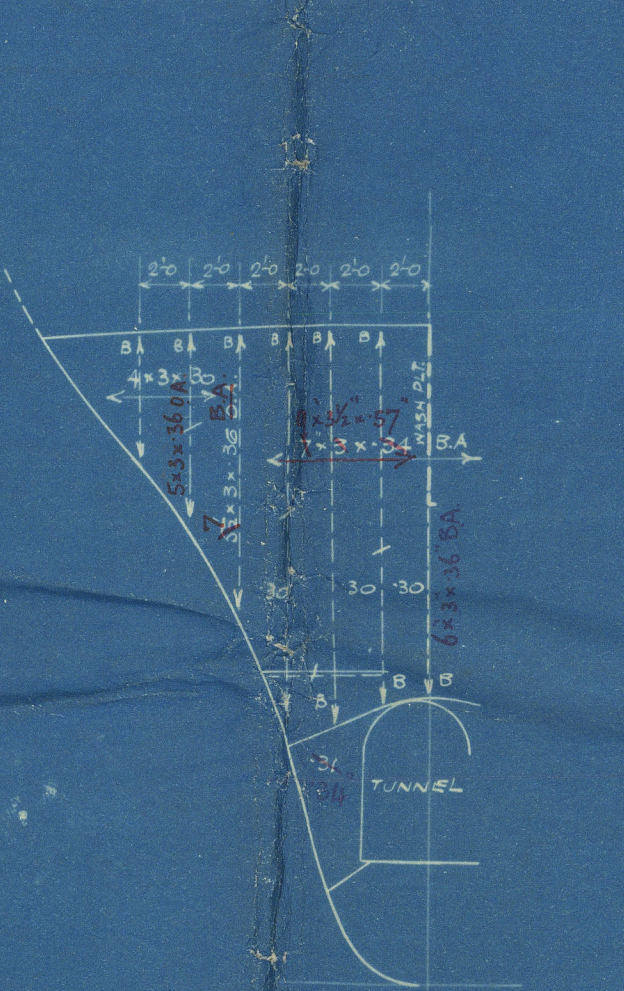
UPPER DECK



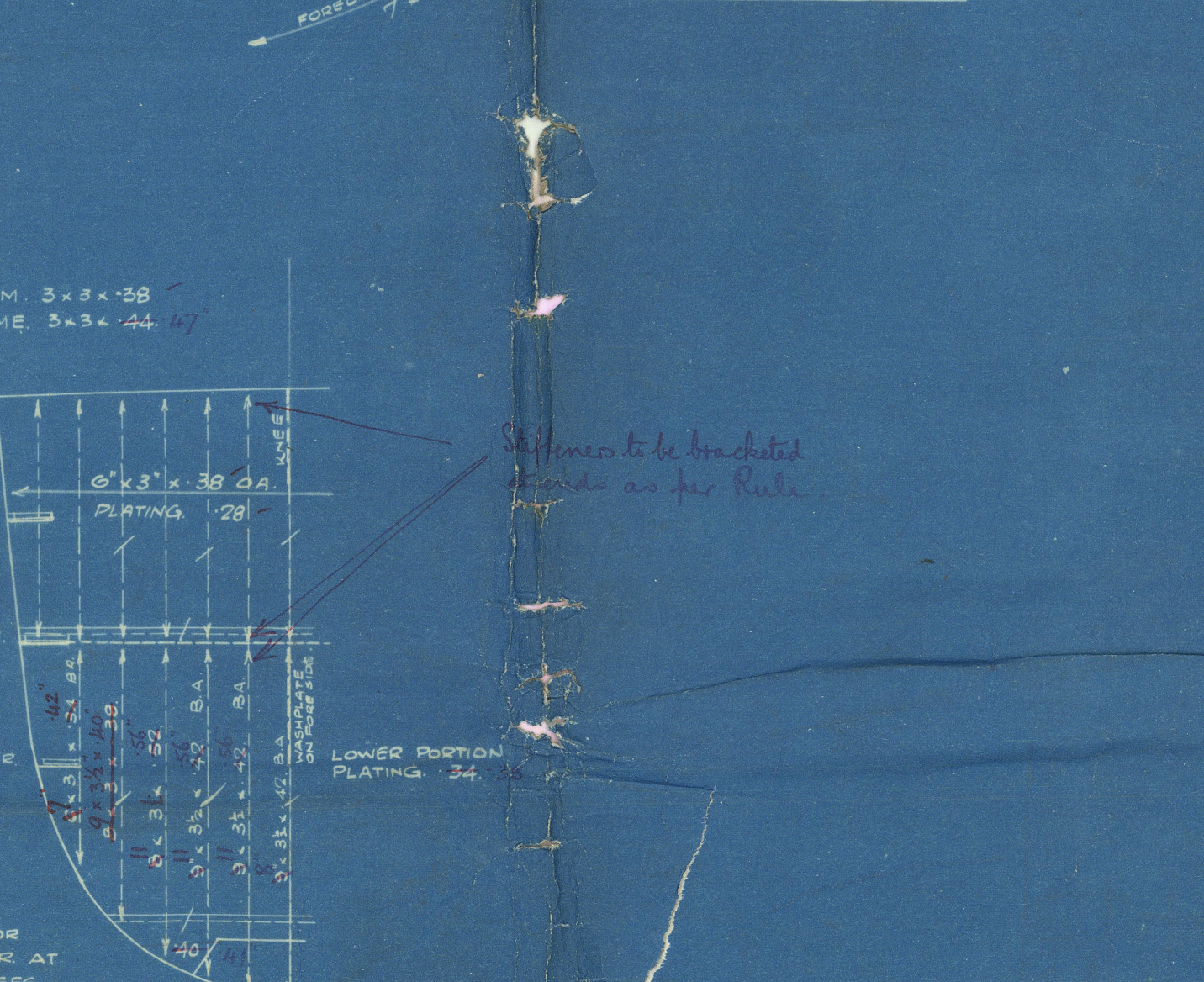
UPPER DECK



POOP DECK



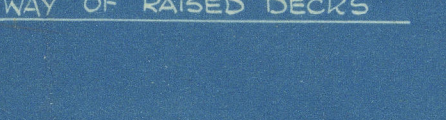
FORECASTLE DECK



BRIDGE DECK



DETAIL OF 24" BRACKETS IN WAY OF RAISED DECK



SMITHS DOCK CO. LTD.
SHIPBUILDERS & ENGINEERS
SOUTH BANK ON TYNE

AFTER PEAK BULKHEAD FRAME 10.

W.T. BULKHEAD FR 35.

W.T. BULKHEAD 50.

W.T. BULKHEAD FR 75.

W.T. BULKHEAD FR 105.

W.T. COLLISION BULKHEAD FR 126 STIFFS ON FORB SIDE

No 818 & 819 1926
Lloyd's Register of Shipping

RETAIN



© 2019

Lloyd's Register
Foundation

Massachusetts Dock Co.

P.S. Nos. 8784 & 879

Profs & Dock plan.

S.S. Cherry Chase
MDB. RPT. No. 12747

S.S. "Granta"
Quab. Rpt No. 12840 (Yhd)

This plan approved for
Nos. 835 & 844.

See Secretary's letter.

10 Oct 1927

RETAIN

S.S. Quickstep
MDB. RPT. No. 13204

S.S. Royston
MDB. RPT. No. 13524



© 2019

Lloyd's Register
Foundation

W437-0182