

SMITHS DOCK CO

STERN TUBE & SHAFTING

SCALE 1" = 1 FOOT

BACK OF ALL COUPLINGS TO BE FACED IN WAY OF BOLT HOLES TO CLEAR BOLT HEADS & NUTS

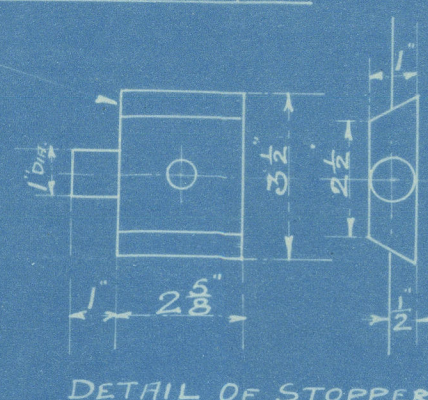
ALL HOLES TO BE DRILLED PARALLEL & BOLTS TO BE A GOOD FIT FOR FULL LENGTH.
ALL COUPLINGS TO BE DRILLED TO JIG.
BOLTS TO BE DUPLICATES & INTERCHANGEABLE.

OIL GROOVES THUS IN FACES OF THRUST COLLARS, WITH THE EXCEPTION OF THE AFTER FACE OF THE AFTER COLLAR. GROOVES NOT TO BE CARRIED OUT TO EDGE.

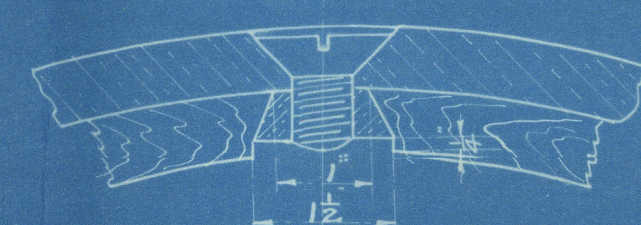
THRUST SHAFT ONE OFF THIS TO BE FINISHED BRIGHT ALL OVER.

ALL SHAFTING TO BE TO THE CLASSIFICATION REQUIREMENTS & TO BE STAMPED BY THEIR INSPECTOR BEFORE LEAVING THE MAKERS WORKS

STOPPER PLATE FOR LOCKING NUT TO BE FITTED IN SLOT & HELD IN POSITION BY A 3/8" TAP BOLT. HOLE IN SHAFT TO BE DRILLED AFTER NUT HAS BEEN HARDENED UP WITH PROPELLER FITTED.



WROT. IRON NUT, SCREWED 4 THREADS PER INCH LEFT HAND. 9/16" DIA. OVER THREADS.



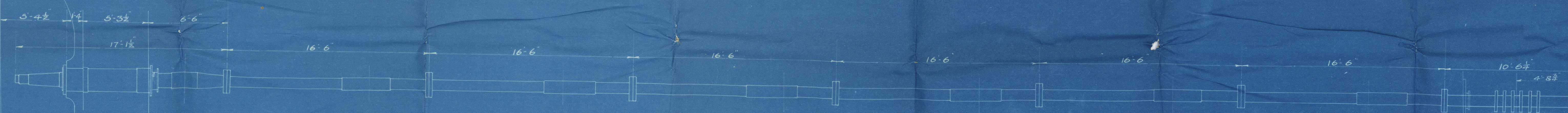
DETAIL OF BRASS STRIPS FOR SECURING LIGNUM VITAE IN STERN BUSH.

6" I. M. STUDS FITTED WITH DOUBLE NUTS. THOSE MARKED TO BE 10" LONG. OTHERS 8"

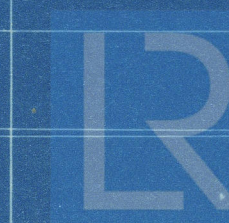
WROT. IRON NUT, SCREWED 1 1/2" DIA.

MUNTZ METAL GUARD RING

9" I. DIA. BOLTS ON A 2" 2 1/2" P.C.D.



CONTRACTS	CLASSIFICATION	SEE NOTES	MARKED
286-7	LLOYDS	LETTERED	UP BY
			K.P.



ROYAL NAVAL SCHOOL OF ENGINEERING

W. & A. 1926

K.P.
9-2-26
11/2/26
53

12/2/26

96 170
12/2/26

SMITHS DOCK CO
MIDDLESBROUGH

SHIP NOS 818-9
ENG NOS 286-7

SHAFTING ✓

CYL 21"-35"-57½"

STROKE 42"

WP

180 LBS DR

DIA OF PROPELLER 16'-0"

S.S. *Chewchane*
MDB. RPT. No. 12747

S.S. *Granta*
MDB. RPT. No. 12862.

S.S. *Royston*
MDB. RPT. No. 13527

RETAIN

© 19

Lloyd's Register
Foundation

RETAIN

1810-LSHM.



© 2019

Lloyd's Register
Foundation