

Boiler No.	Ship No.
5581	529
5581	478

STEEL BOILER

10-6 DIA 10-0 LONG 150 LBS W.P. LLOYDS

5581

28/11/24

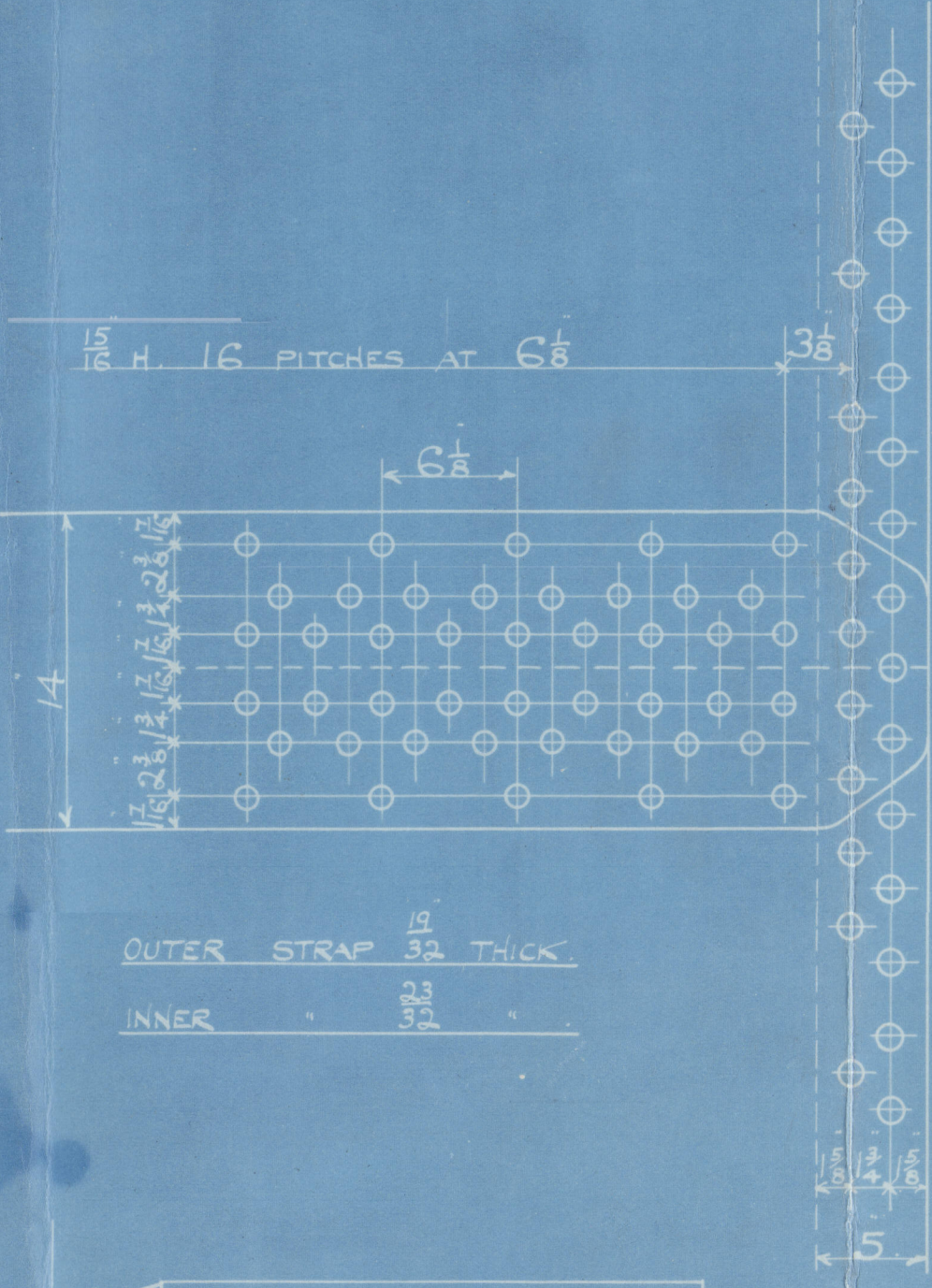
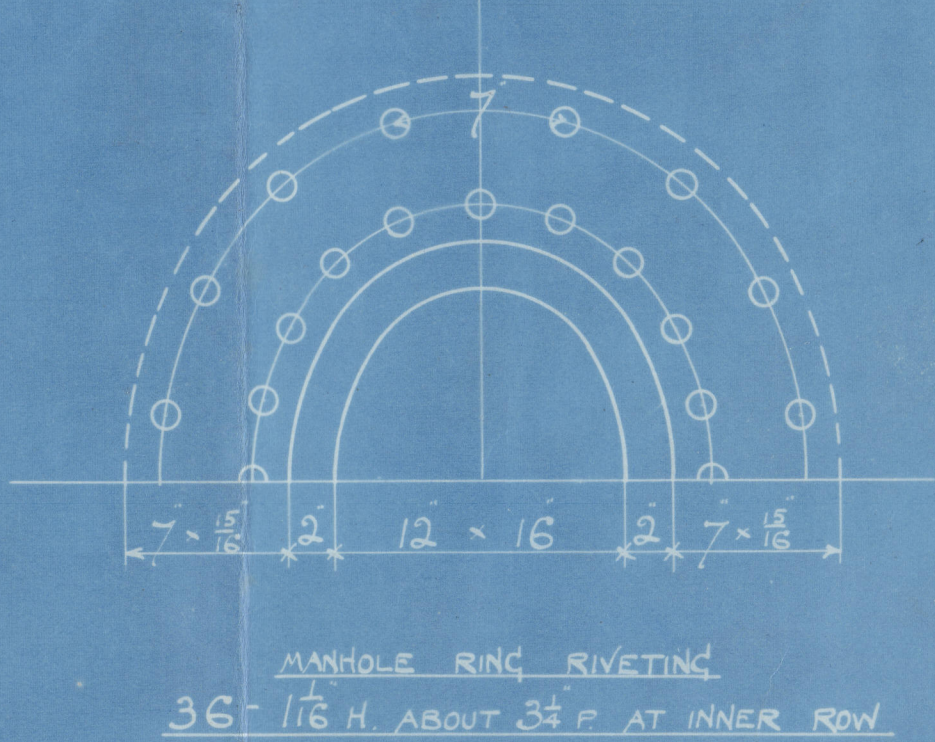
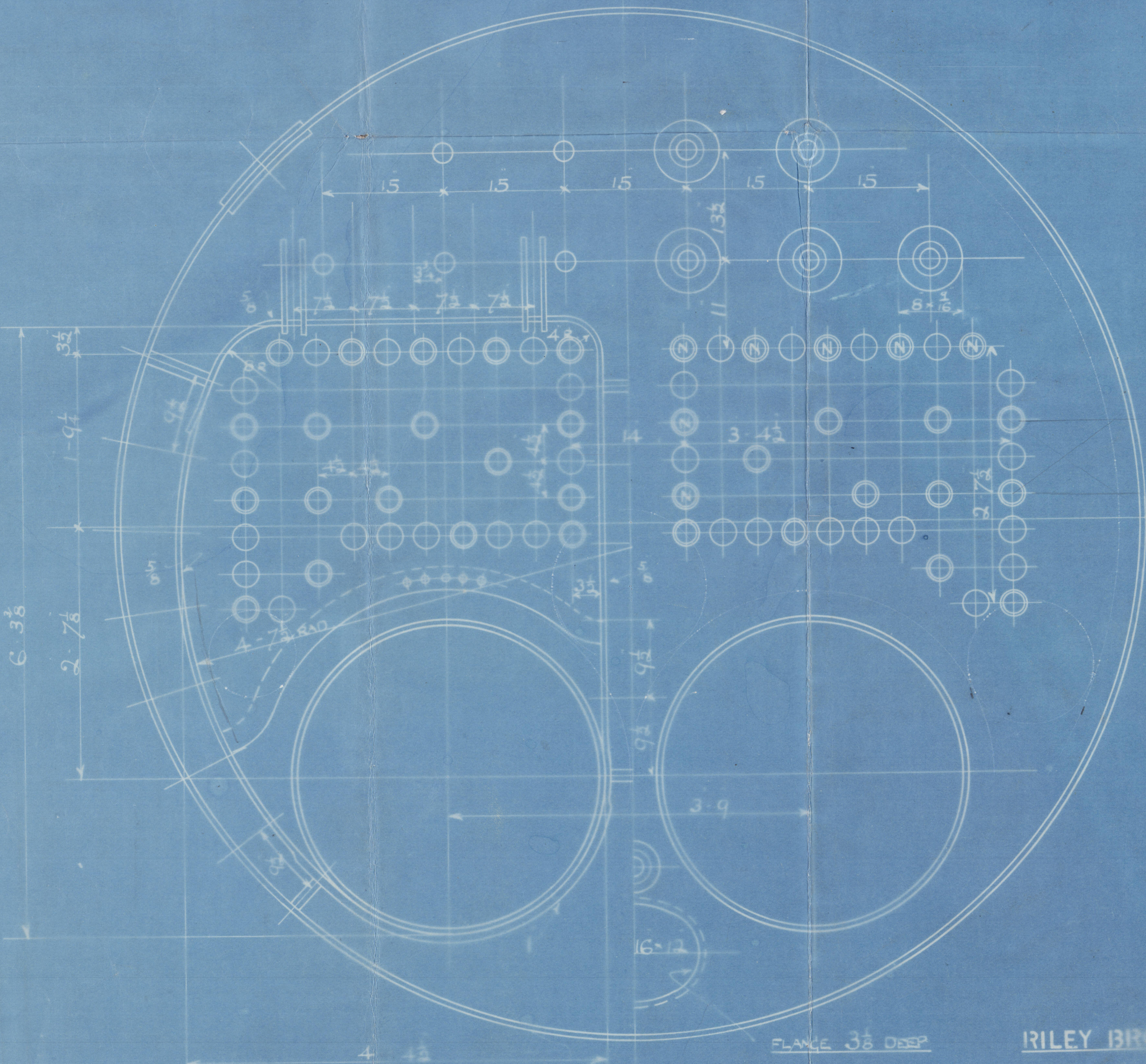
SPECIFICATION OF MATERIALS

SHELL, STRAPS, GIRDERS & MAINSTAYS

28-32 TONS.

BALANCE OF PLATES, RIVETS & SCREW STAYS

26-30 "



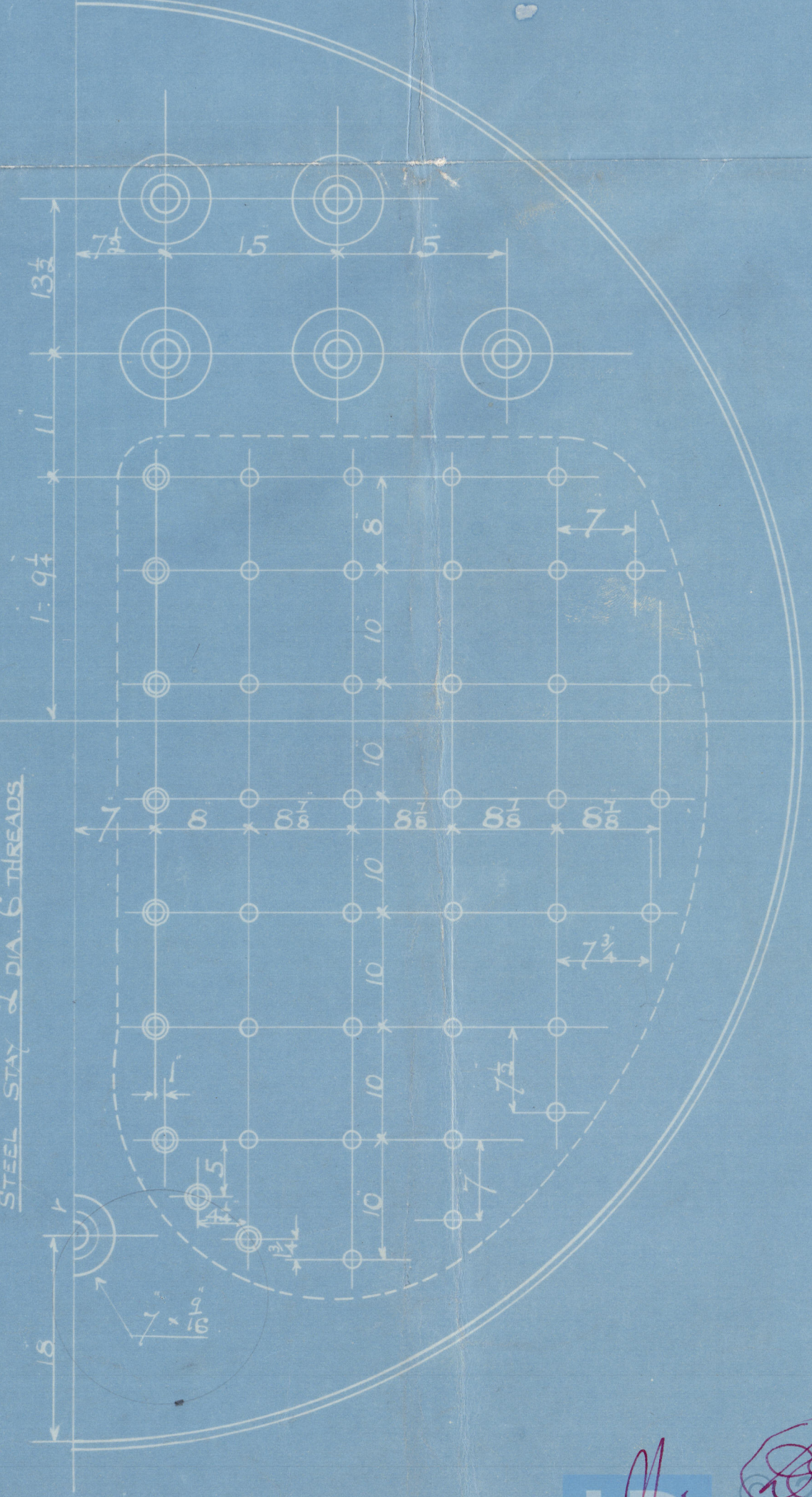
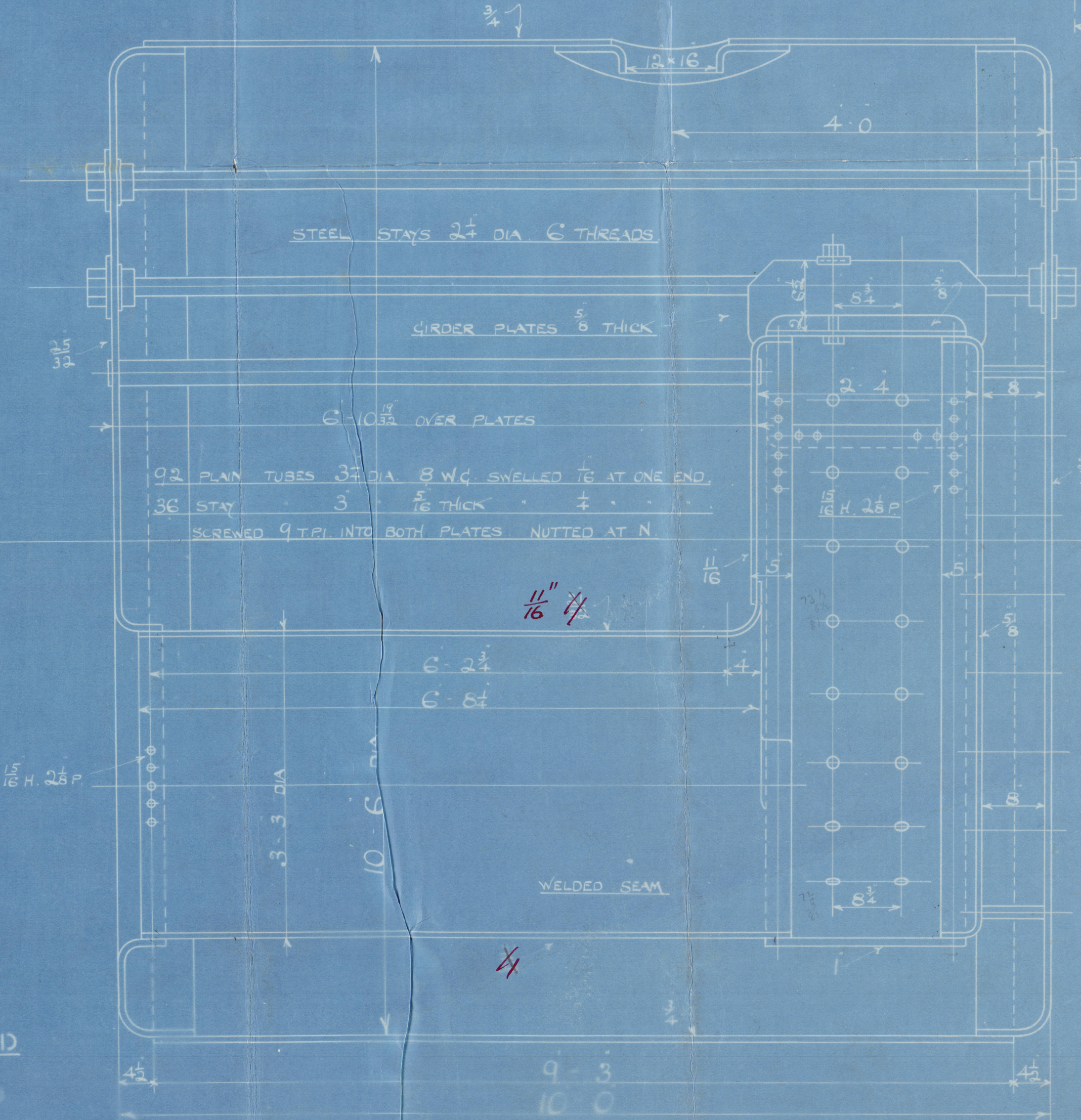
CURVA SEAMS 1/4 H 3/4 P DOUBLE RIVETING

CONTINUOUS BELOW FURNACE

COMBUSTION CHAMBER SCREW STAYS

SCREWED 9 TPI NUTTED AT ENDS

AT BACK MARK	1/8 DIA
AT SIDES	1/4
IN GIRDERS	1/2



RILEY (BROS BOILERMAKERS) LTD

STOCKTON ON TEES

HEATING SURFACE 975 sq ft

GRATE AREA 343 sq ft

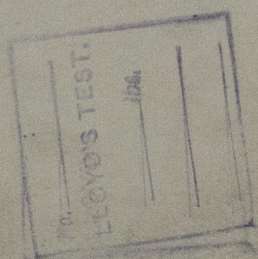
FIREBARS 5-6 LONG

W436-0161

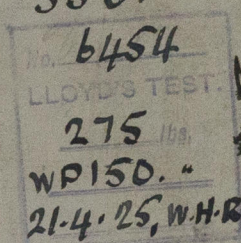
Thos Riley Bros Ltd
Boilers No 5581
5584
for

Thos Roper & B Co
Wm Gray & Co Ltd
Respectively

Working Press 150 lbs

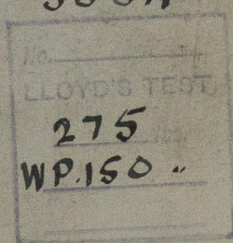


5581



Hand. Rpt.
2327

5584



Steel invoice inside

RETAIN

fold



© 2019

Lloyd's Register
Foundation
W436-0161

Ms 5582

RETAIN



© 2019

Lloyd's Register
Foundation