

MIDSHIP SECTION. STANDARD STEAMER.

DIMS. 400'-0" x 52'-0" MLD x 31'-0" MLD
TO CLASS 100A1 LLOYD'S REGISTER

SCALE $\frac{1}{2}$ " = 1 FOOT.

NUMERALS

BREADTH MLD = 52.00

DEPTH MLD = 31.00

85.00 TRANSVERSE N°

LENGTH 400 400

33200 LONGITUDINAL N°

5' TO UPPER DECK = 12.90

d = 27'-5"

COMPLETE LIST OF SECTIONS USED IN BUILDING THIS VESSEL

12" x 3 1/2" x 3 1/2" CHANNEL
8" x 5" DULO ANGLE
9" x 3 1/2" "
10" x 3 1/2" "
6" x 3 1/2" ANGLE
6" x 6" "
3 1/2" x 3 1/2" "
5" x 5" "

DOUBLE BUTT

FRAMES 3 1/2" x 4 1/2" x 7 1/2" FORWARD DOUBLED FROM 7 1/2" FORWARD TO COLLISION BULKHEAD
REVERSE FRAMES 5 1/2" x 5 1/2" x 7 1/2" TO 8' AFT
DOUBLED IN ENGINE ROOM TO GIRDER OUTSIDE ENGINE SEAT 8' x 5 1/2" x 5 1/2" FOR LATERAL
5 1/2" x 5 1/2" x 5 1/2" IN COLLIER SPACE DOUBLED UNDER COLLIER DECK
FLOOR PLATES 4 1/2" x 4 1/2" x 5 1/2" AT ENDS 5 1/2" IN COLLIER SPACE
SOLID FLOORS ON EVERY 3RD FRAME INSERT IN ENGINE SPACE UNDER COLLIER DECK AND FROM
LENGTH FORWARD WHERE THEY ARE SOLID ON EVERY FRAME
TANK SIDE DRUMS 14" FOR 14' TO 40' AT ENDS 5 1/2" IN COLLIER SPACE
INTERSTIALS 14" FOR 14' TO 40' AT ENDS 5 1/2" IN COLLIER SPACE FLANGED TO TANK TOP
EXCEPT IN ENGINE & COLLIER SPACE & FORWARD OF 7 1/2" LENGTH
INTERSTIAL VERTICAL ANGLE 3 1/2" x 3 1/2" x 4 1/2" THROUGHOUT 5 1/2" x 5 1/2" x 5 1/2" IN COLLIER SPACE
TOP ANGLE 6" x 3 1/2" x 3 1/2" IN ENGINE SPACE 5 1/2" x 5 1/2" x 5 1/2"
BOTTOM ANGLE 5 1/2" x 3 1/2" x 3 1/2" FOR 14' AFT
FOR SCANTLING AT INTERMEDIATE FRAMES SEE SECTION BELOW

BULKHEADS AS PER RULE 5 1/2" x 12" CHANNEL (SEE PROFILE)

STEW 10 1/2" x 2 1/2"

PROPELLER 10 1/2" x 1 1/2"

RUDDER 10 1/2" x 1 1/2"

RIVETS TO BE OF IRON SPACED 15 PER RULE (EXCEPT UPPER D¹)

RUDDER AS PER RULE

ALL BUTTS OVERLAPPED

CENTRE GIRDER 13" x 13" FOR 14' TO 40' AT ENDS 6 1/2" IN COLLIER SPACE

BOTTOM ANGLE 6" x 6" x 6" SMALL DOUBLE BUTT OF 1/2" ANGLE

TOP ANGLE 6" x 6" x 6" ANGLE

DOUBLED IN ENGINE SPACE & FOR 14' TO 40' AT ENDS

VERTICAL ANGLE 6" x 6" x 6" ANGLE FOR 14' TO 40' AT ENDS

TANK TOP CENTRE STRAKE 13" x 13" FOR 14' TO 40' AT ENDS

5 1/2" IN COLLIER SPACE

TANK TOP PLATING 1/2" FOR 14' TO 40' AT ENDS 5 1/2" IN COLLIER SPACE

5 1/2" IN ENGINE SPACE CLEAR OF ENGINE SEATING

TANK TOP PLATING INCREASED 1/8" IN LEV OF CEILING UNDER MATCHWAYS

4 BUTTS IN HEADS & HEADS OF ROLLERS ABOVE 5' IN DIA

1 1/2" COLLIER SPACE DOUBLE RIVETED

1 1/2" COLLIER SPACE DOUBLE RIVETED

1 1/2" COLLIER SPACE DOUBLE RIVETED

1 1/2" COLLIER SPACE DOUBLE RIVETED

1 1/2" COLLIER SPACE DOUBLE RIVETED

1 1/2" COLLIER SPACE DOUBLE RIVETED

1 1/2" COLLIER SPACE DOUBLE RIVETED

1 1/2" COLLIER SPACE DOUBLE RIVETED

1 1/2" COLLIER SPACE DOUBLE RIVETED

1 1/2" COLLIER SPACE DOUBLE RIVETED

1 1/2" COLLIER SPACE DOUBLE RIVETED

1 1/2" COLLIER SPACE DOUBLE RIVETED

1 1/2" COLLIER SPACE DOUBLE RIVETED

1 1/2" COLLIER SPACE DOUBLE RIVETED

1 1/2" COLLIER SPACE DOUBLE RIVETED

1 1/2" COLLIER SPACE DOUBLE RIVETED

1 1/2" COLLIER SPACE DOUBLE RIVETED

1 1/2" COLLIER SPACE DOUBLE RIVETED

1 1/2" COLLIER SPACE DOUBLE RIVETED

1 1/2" COLLIER SPACE DOUBLE RIVETED

EQUIPMENT NUMBER

MILL 100(22+3) = 33200

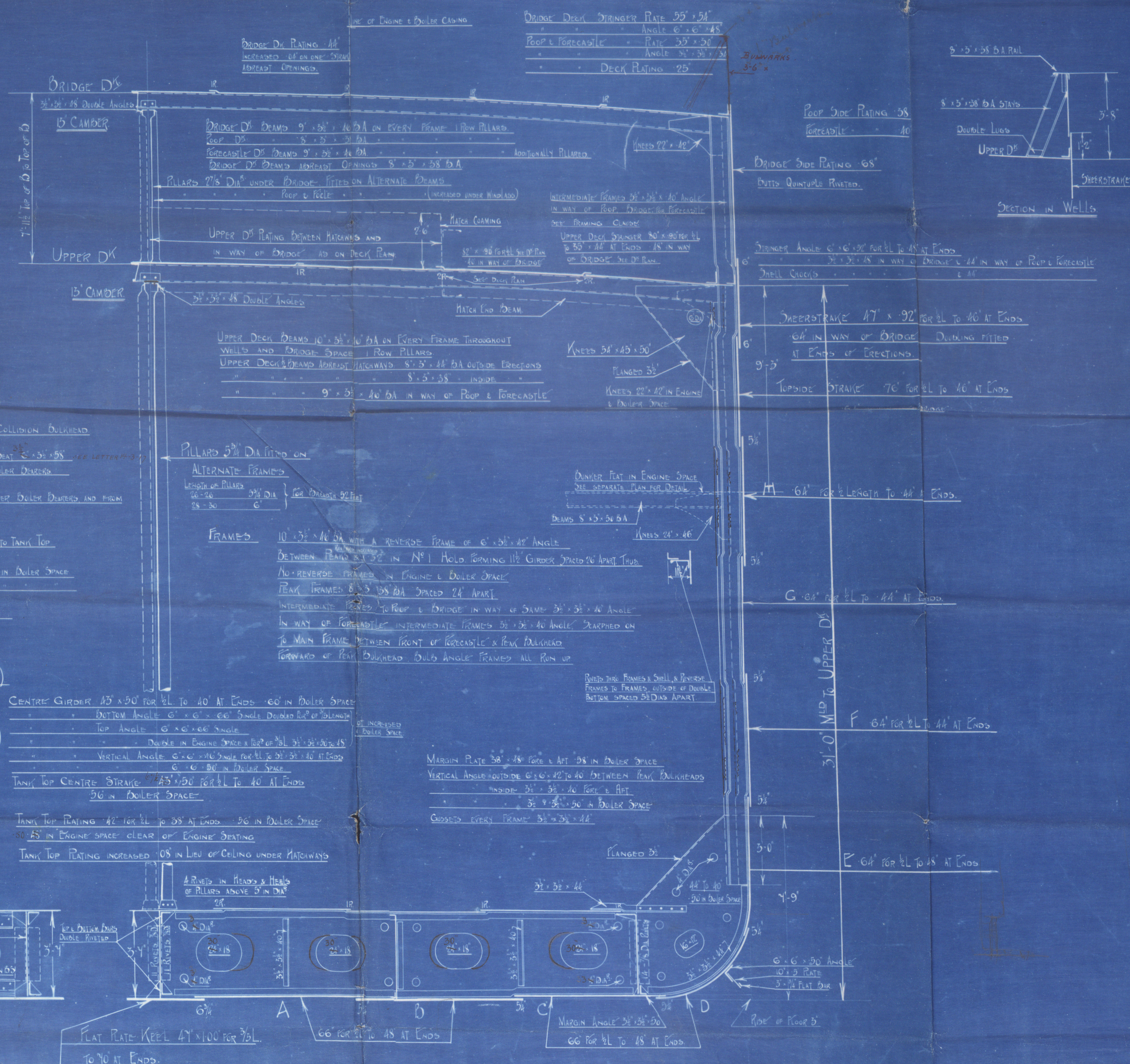
PROP. DRUMS 100 x 70 = 1700

DECKHOLD 31.3 x 7.5 x 9 = 118

33218

EQUIPMENT

2 DOWN ANCHORS 60 CWT. STEELLESS
1 STREAM 50%
1 KEDGE 7%
270 PATHWAYS 2 1/2" 5/16" LINK CHAIN CABLE
90 1 1/2" STREAM CHAIN OR 1 1/2" STEEL WIRE ROPE
170 1 1/2" HEMP HAWSEY 4 1/2"
2 HYP 90 8" HEMP HAWSEY 2 1/2"
2 HYP 90 4" WIRE 2 1/2"



SECTION AT BRACKET FLOOR.

SOLID FLOORS EVERY 3RD FRAME.

NOTE: THREE STRAKES OF PLATING TO HAVE MIDSHIP THICKNESS CARRIED FORWARD TO COLLISION B¹

NOTE: BUTTS OF A & D STRAKES QUINTUPLE RIVETED WHERE BREADTH OF STRAKE EXCEEDS 8'

REMAINDER AS PER RULE

RETAIN

W435-0071



© 2019

Lloyd's Register
Foundation

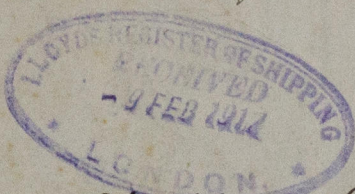
Harland & Wolff, Ltd

Standard Ships "A"

N^{os} 520, 521 and 522.

Midship Section ✓

Official Plan
received Belfast. 7-2-17.



S/S "War Shamrock."
Bel. 7848.

S/S War Clover
Bel 7869.

S/S War Trefoil
Bel. 7870.



RETAIN



© 2019

Lloyd's Register
Foundation