

6.9.26

PROFILE & DECK PLAN.

S.S. BELGIER.

[EX. VAS. SHAMROCK]

PRINCIPAL DIMENSIONS: L 400'0" x B 32'0" x D 31'0"

ADDITIONAL TWEENDECK IN HOLDS

SCALE $\frac{1}{2}$ " = ONE FOOT.

LLOYDS CLASS. 100 A.1.

[STANDARD VESSEL A. TYPE]

FOR DETAILS OF PILLARS. SEE PLAN N°2.

" " " ALL BRACKETS. SEE PLAN N°2.

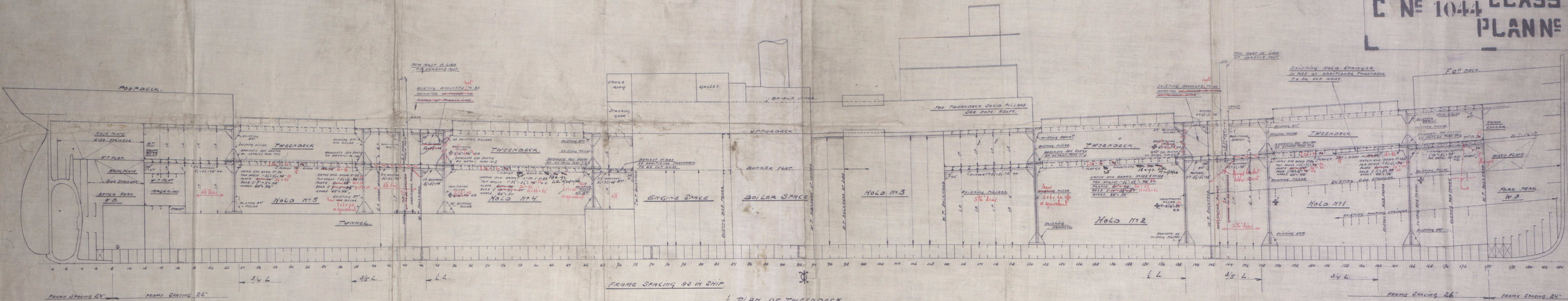
C N° 1044 CLASS I
PLAN N° 1



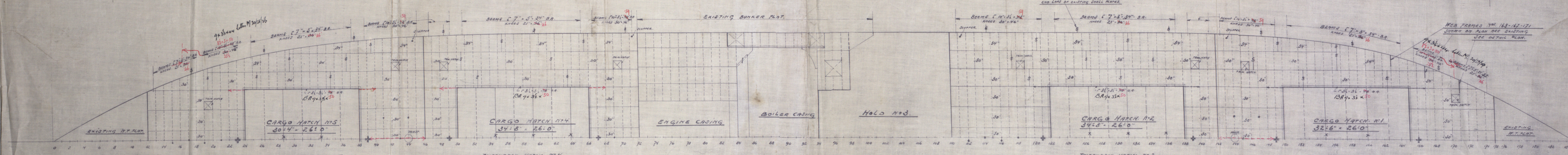
FOR ATTACHMENT OF TWEENDECK PLATING
AND BULKHEADS. SEE DETAIL PLAN N°2
FOR RIVETTING OF HATCH AND BEAM KNEES.
AND ORDINARY BEAM KNEES. SEE DETAIL PLAN N°2.

NOTE: ALL LOWER HOLD PILLARS AS SHOWN ON PLAN
ARE EXISTING. [EXCEPTED PILLARS UNDER MISTS]
SOLID TWEENDECK PILLARS 3" Ø
FOR ATTACHMENT OF HEADS AND HEELS OF PILLARS. SEE DETAIL PLAN N°2.

brackets and masts supported to surveyors satisfaction
Hanging brackets to be fitted as per Rules.



1/2 PLAN OF TWEENDECK.



FOR DETAIL OF TRIMMING HATCHES [SEE DETAIL PLAN N°2]

TWEENDECK HATCH N°5
3" W.W. COVERS FOR 1 ST.
W.B. BEAMS 12" x 36"
SPACED 6'0" CENTRE TO CENTRE
DOUBLE TOP & BOTTOM BARS.
7'5" x 3'1" x 18" Ø.B. [5' RANGE HANGING]

NO DOUBLING PLATES AT HATCH CORNERS.

TWEENDECK HATCH N°4
3" W.W. COVERS FOR 1 ST.
W.B. BEAMS 12" x 36"
SPACED 4'0" CENTRE TO CENTRE
DOUBLE TOP & BOTTOM BARS.
7'5" x 3'1" x 18" Ø.B. [5' RANGE HANGING]

TWEENDECK HATCH N°2
SCANTLING AS FOR N°4.
X SHIFTING BEAMS.

TWEENDECK HATCH N°1
3" W.W. COVERS FOR 1 ST.
W.B. BEAMS 12" x 36"
SPACED 6'0" CENTRE TO CENTRE
DOUBLE TOP & BOTTOM BARS.
7'5" x 3'1" x 18" Ø.B. [5' RANGE HANGING]

NO DOUBLING PLATES AT HATCH CORNERS.

Belgier



© 2019

Lloyd's Register
Foundation

S/S KABINDA
Sr.
S/S BELGIER
PROFILE & DECK PLAN
A. E. CO HOBOKEN.

RETAIN

W435-0041

main body is from
fr. of previous



© 2019

Lloyd's Register
Foundation