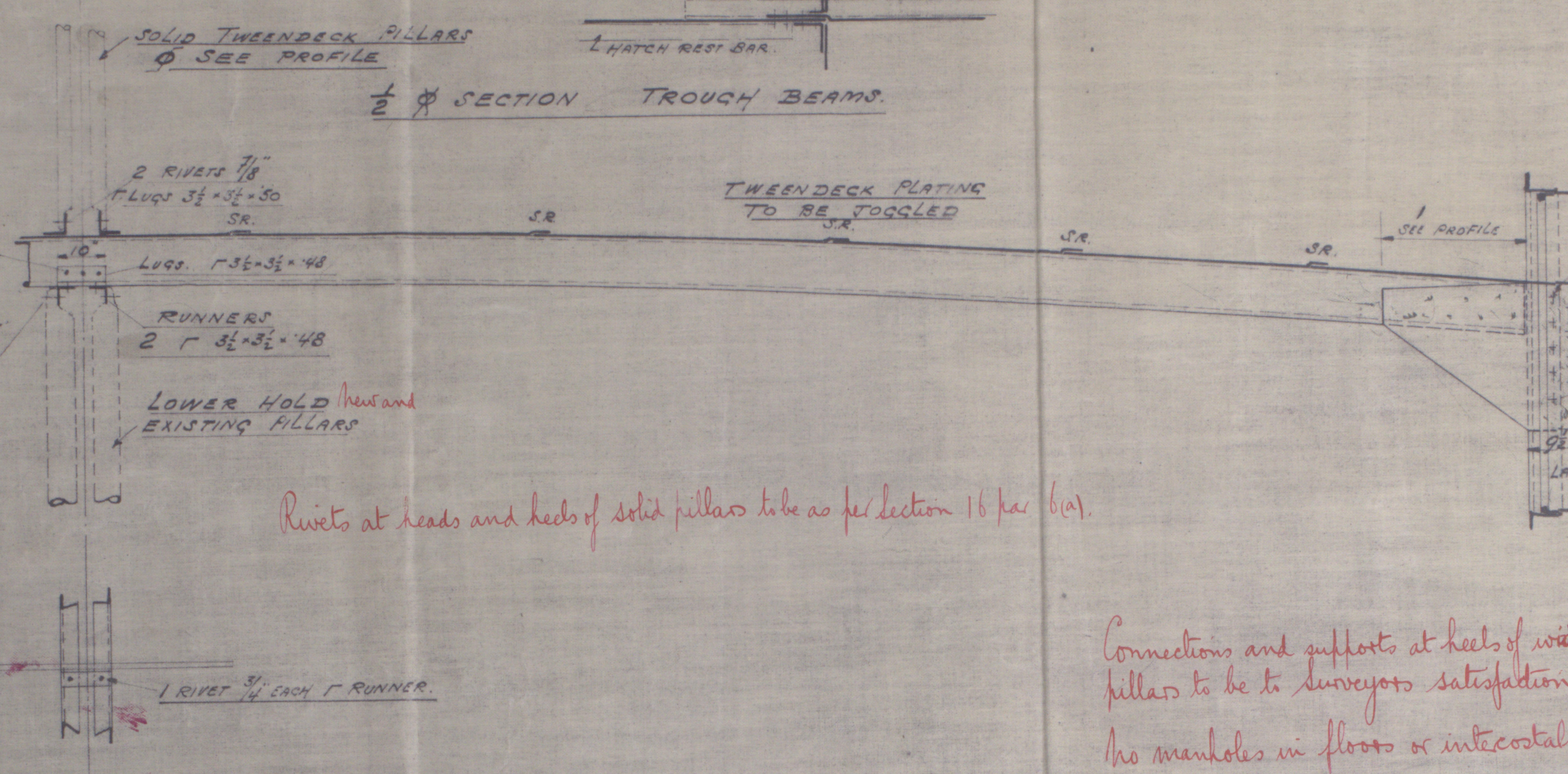


$\frac{1}{2}$  ~~Ø~~ SECTION  
OF ADDITIONAL TWEENDECK



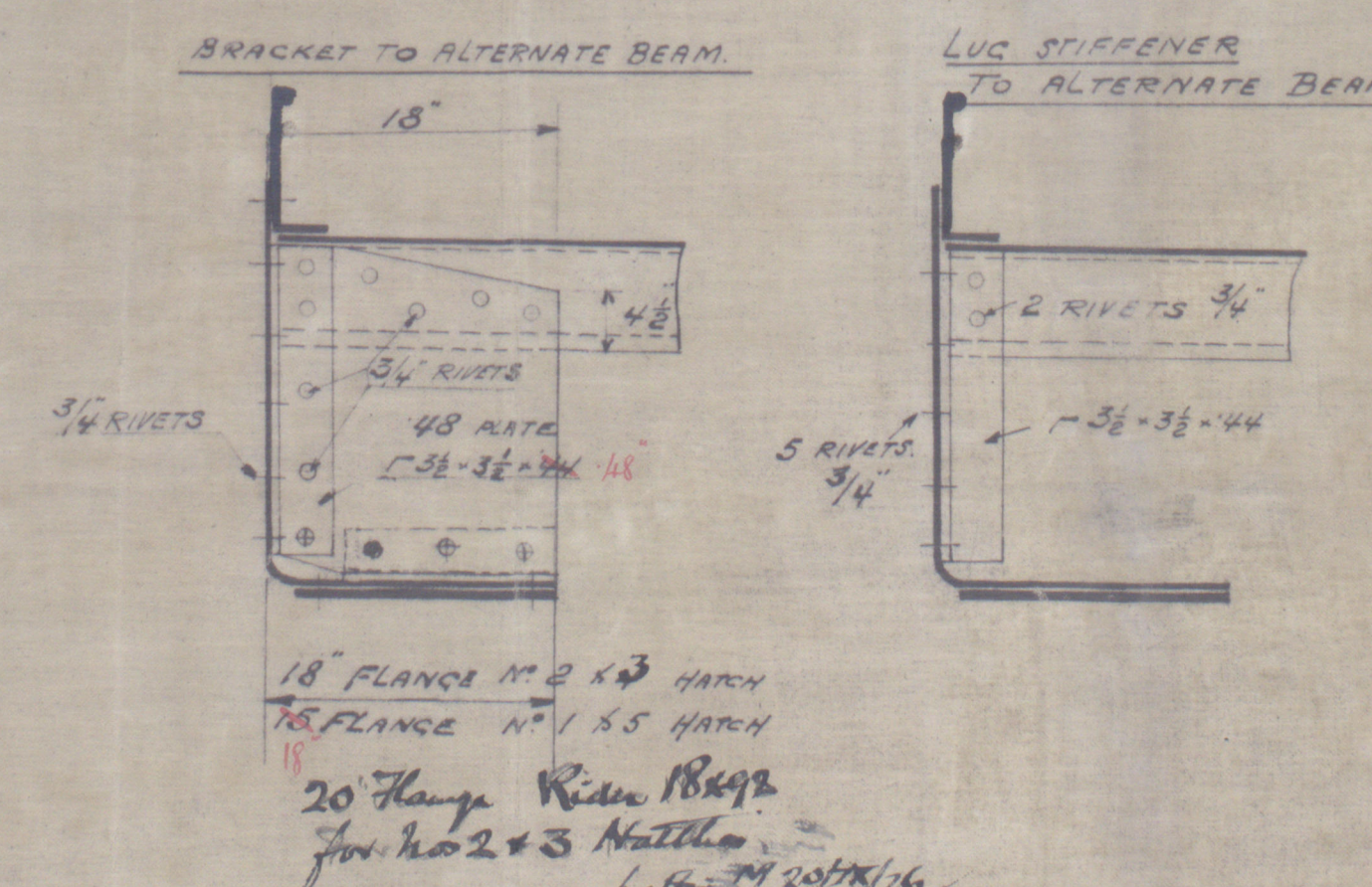
Rivets at heads and heels of solid pillars to be as per section 16 par. 6(a).

Connections and supports at heels of widely spaced pillars to be to surveyors satisfaction.

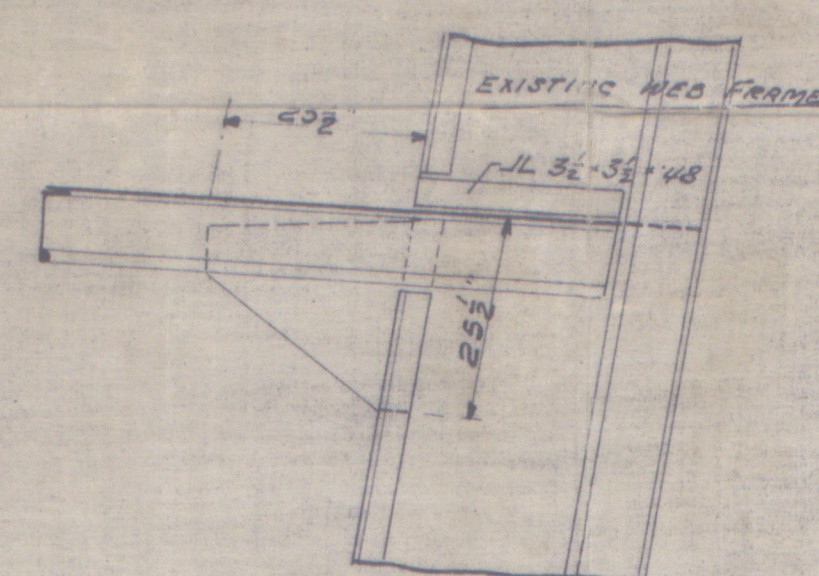
No manholes in floors or intercostals under widely spaced pillars

Requirements of Section 16 of the Rules to be complied with

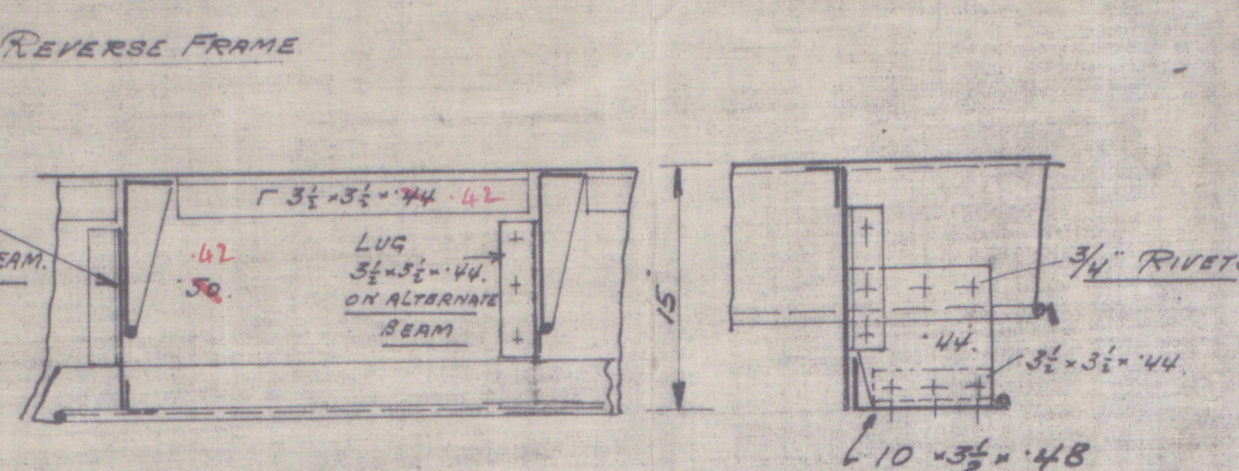
ATTACHMENT OF HALF BEAMS  
TO HATCH COAMING



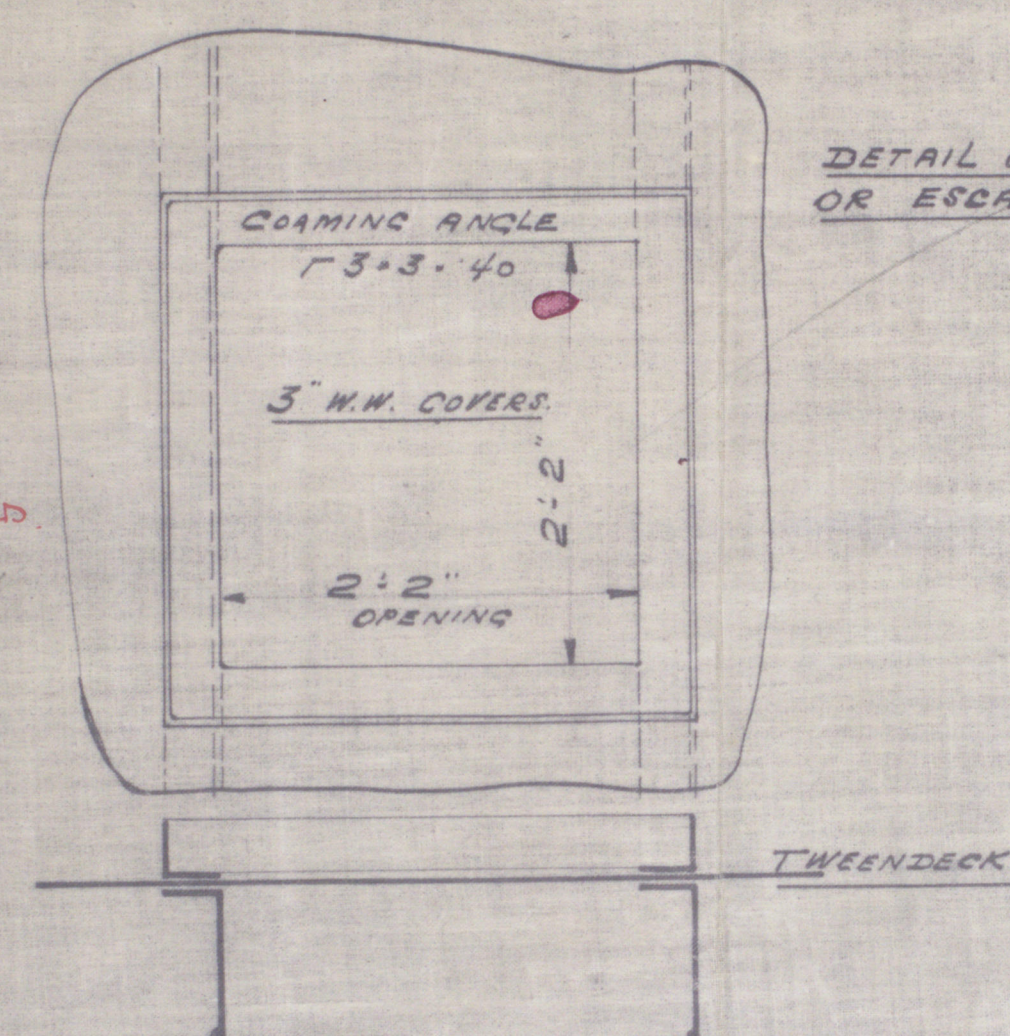
ATTACHMENT OF TWEENDECK  
WEB FRAMES NOS 163 - 167 - 171  
WEB FRAMES TO CUT AT DECK



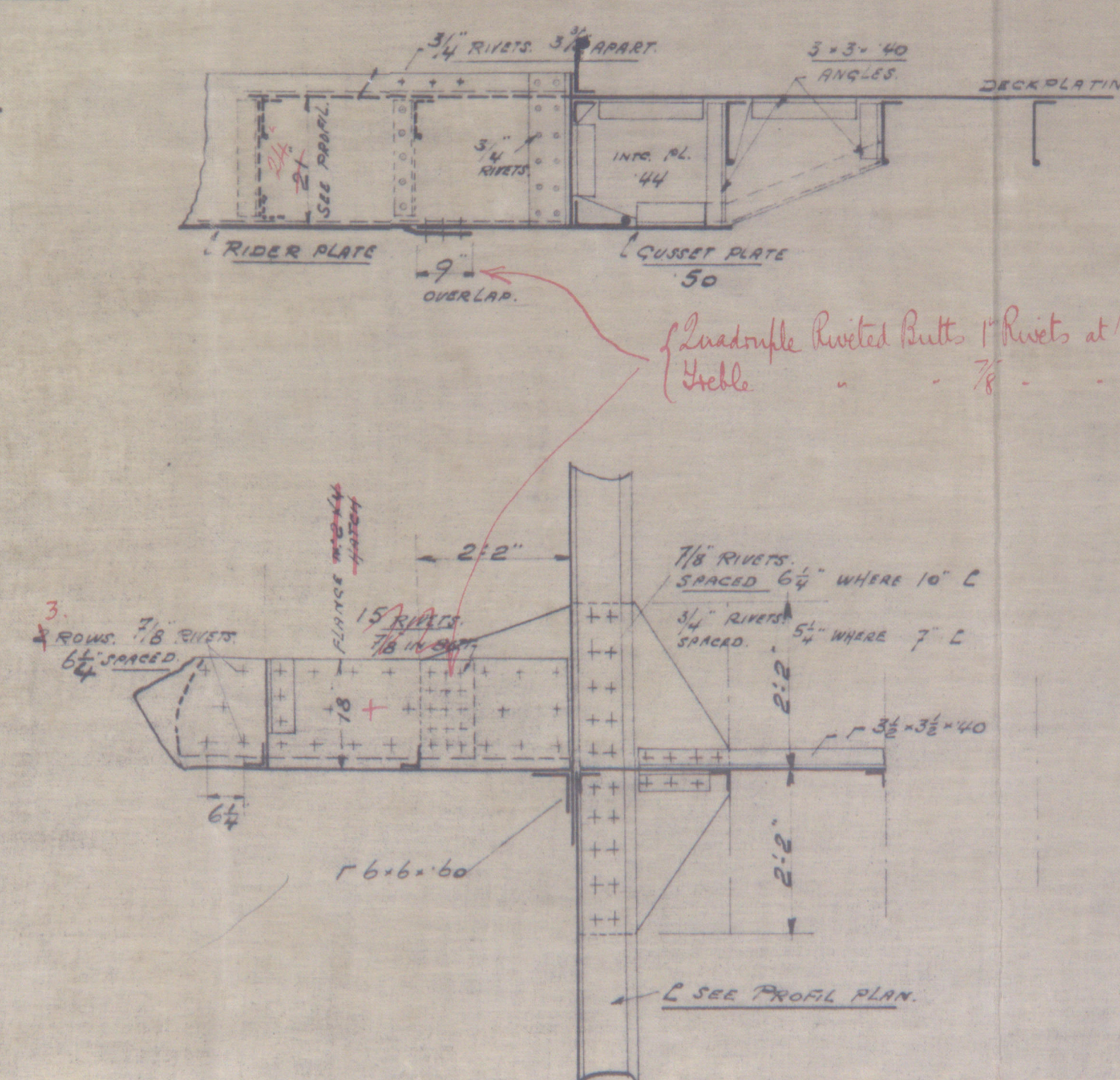
TWEENDECK INTG. GIRDER FRAME N° 166 TO 175



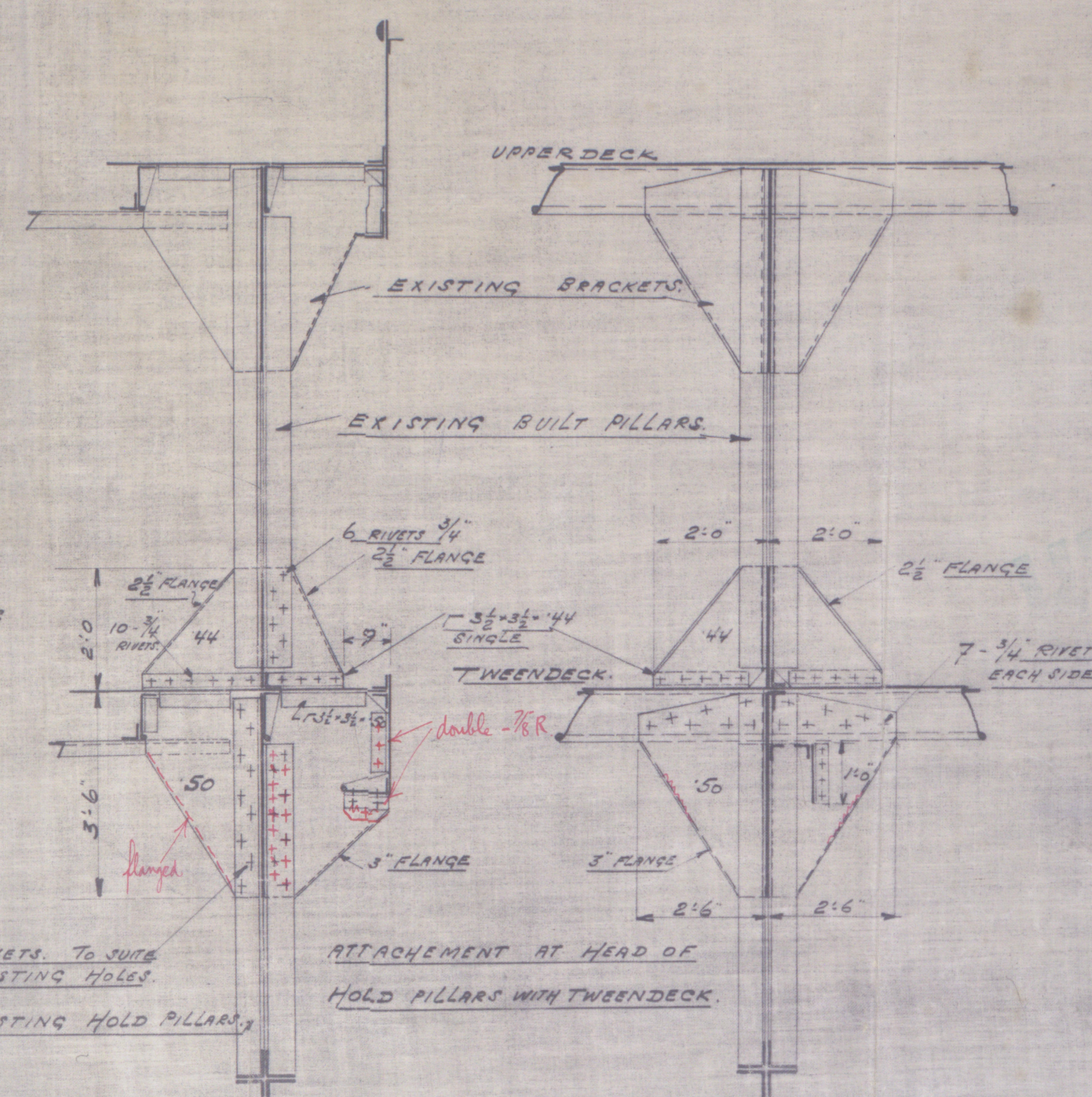
DETAIL OF COAL TRIMMING



DETAIL SHOWING STRENGTHENING  
AT HATCH CORNERS



ATTACHMENT OF TWEENDECK BUILT PILLARS  
ON UPPERDECK AND TWEENDECK



S.S. BELGIER  
(EX WAR SHAMROCK)  
STANDARD VESSEL ("A" TYPE)

LENGTH BETWEEN RP 400'-0"  
BREADTH MOULDED 52'-0"  
DEPTH TO UPPER DECK 31'-0"

DETAILS OF ADDITIONAL TWEENDECK  
IN HOLDS

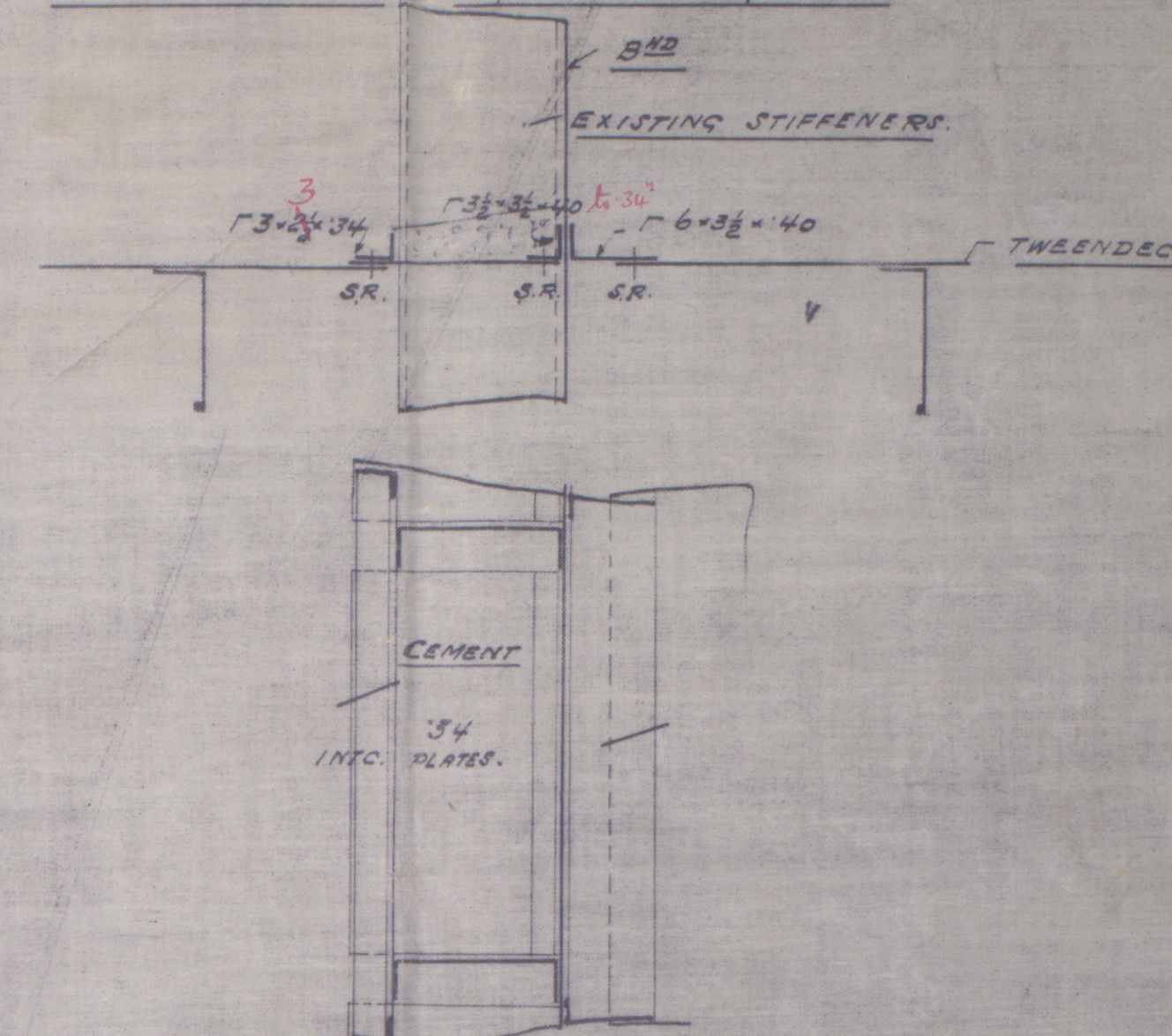
SCALE  $\frac{1}{2}$ " PER FOOT

LLOYDS CLASS \* 100 A1



C N° 1044 CLASS 1  
PLANNE 2

METHOD ATTACHMENT OF  
TWEENDECK PLATING AND BULKHEADS



6.9.26



S/S KABINDA

2<sup>d</sup>.

S/S BELQUIER

DETAIL OF BRACKETS

HATCH COAMINGS &c.

for

2<sup>ND</sup> DECK

A. E. CO. HOBOKEN

RETAIN

W435-0039



© 2019

Lloyd's Register  
Foundation