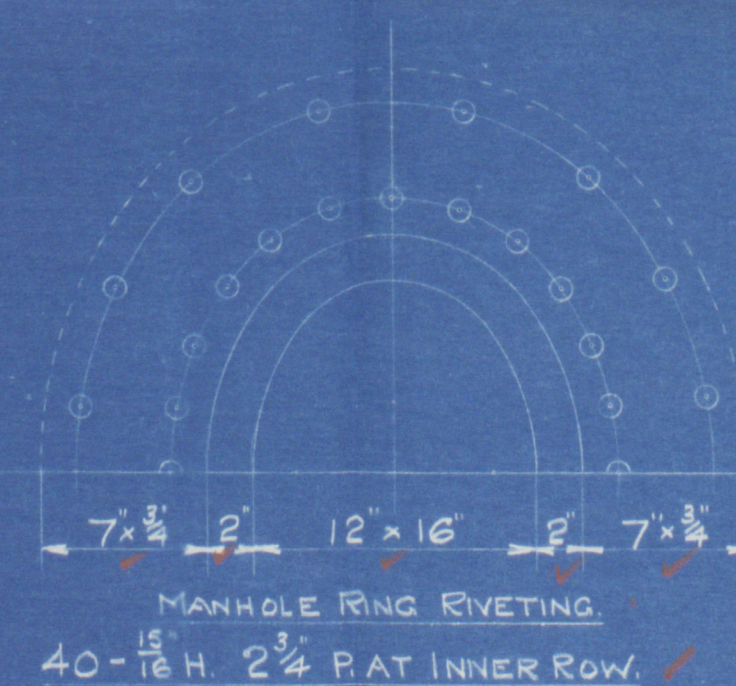
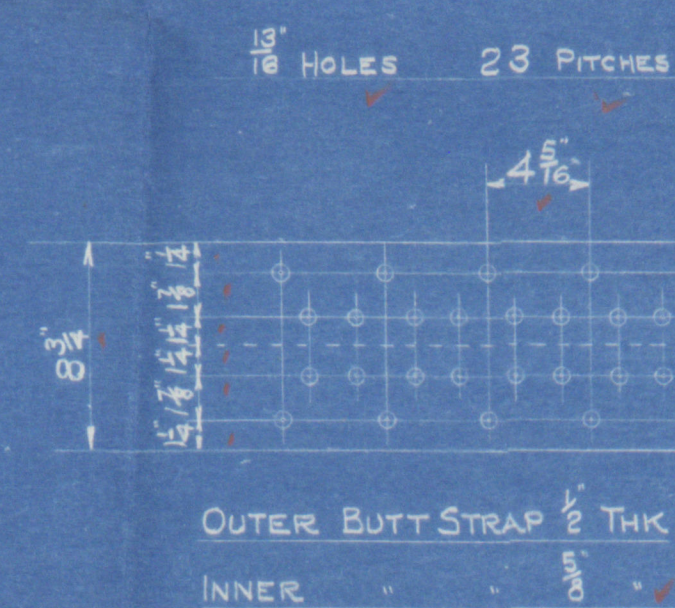


SPECIFICATION OF MATERIALS

SHELL & BUTTSTRAPS	29-33 TONS.
GIRDERS & MAINSTAYS	28-32 "
BALANCE OF PLATES, RIVETS & SCREW-STAYS	26-30 "

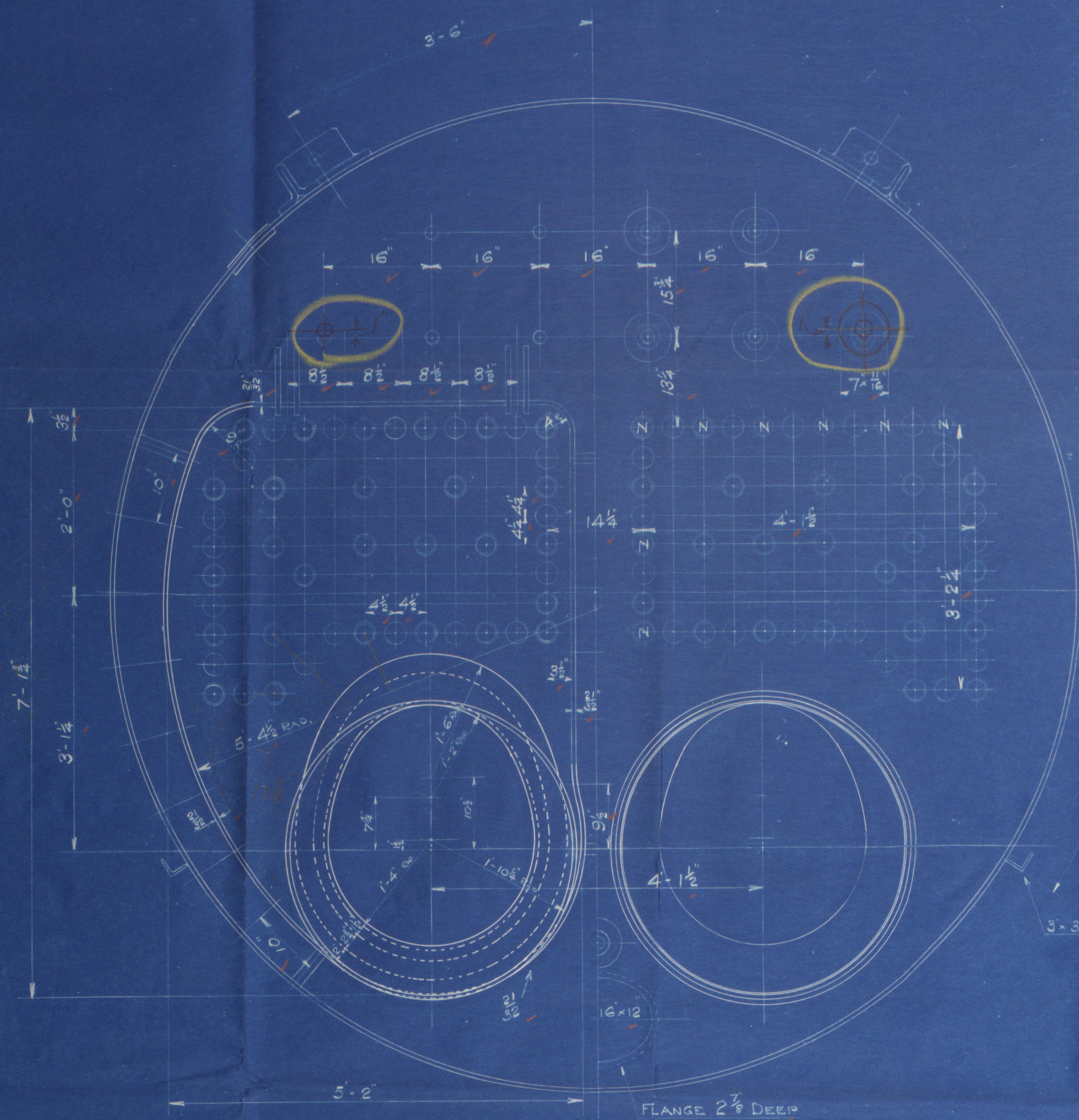


SHELL RIVETING
PLATE $\frac{1}{2}$: 81-15
RIVET $\frac{1}{2}$: 80-33

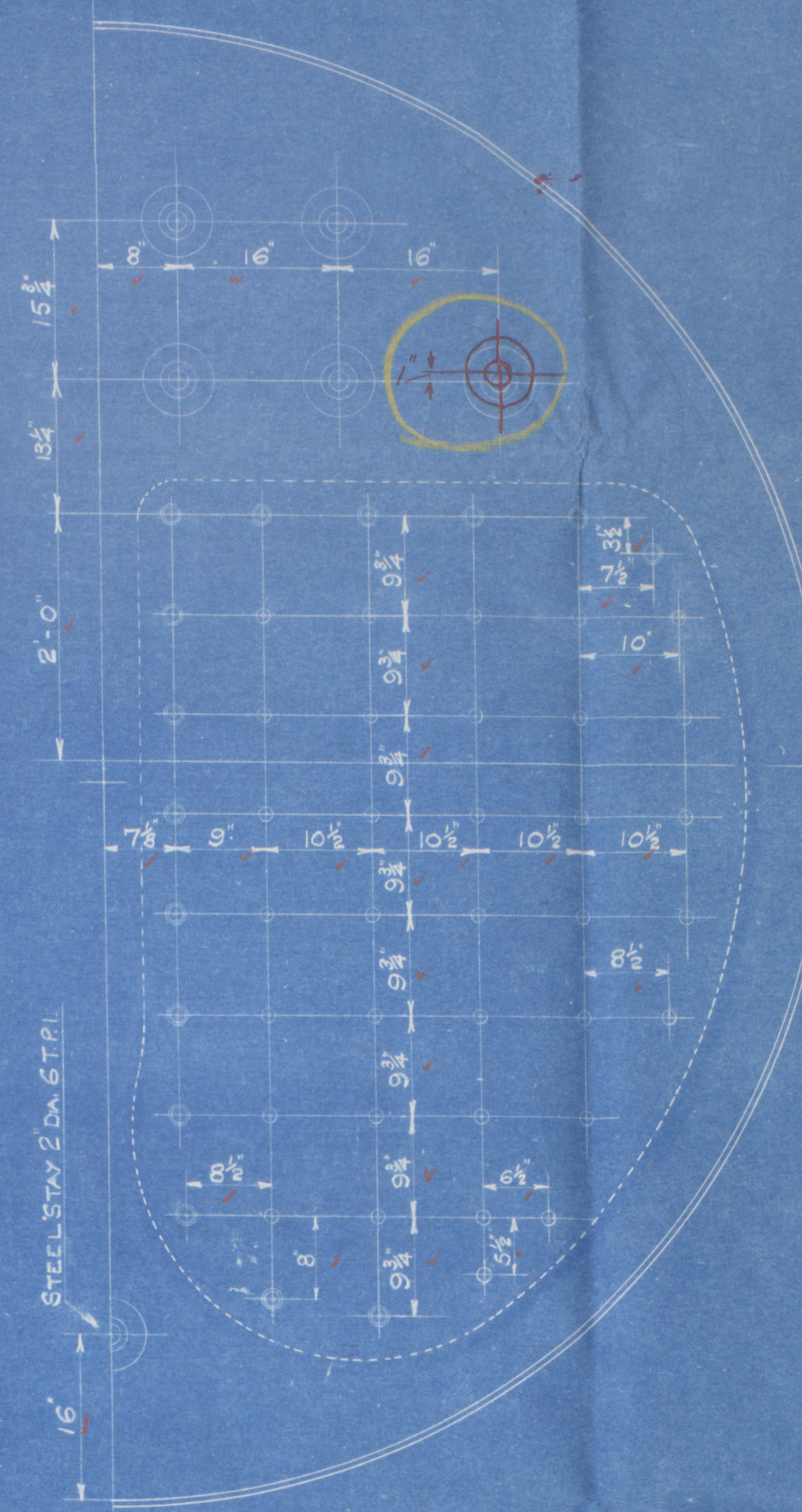
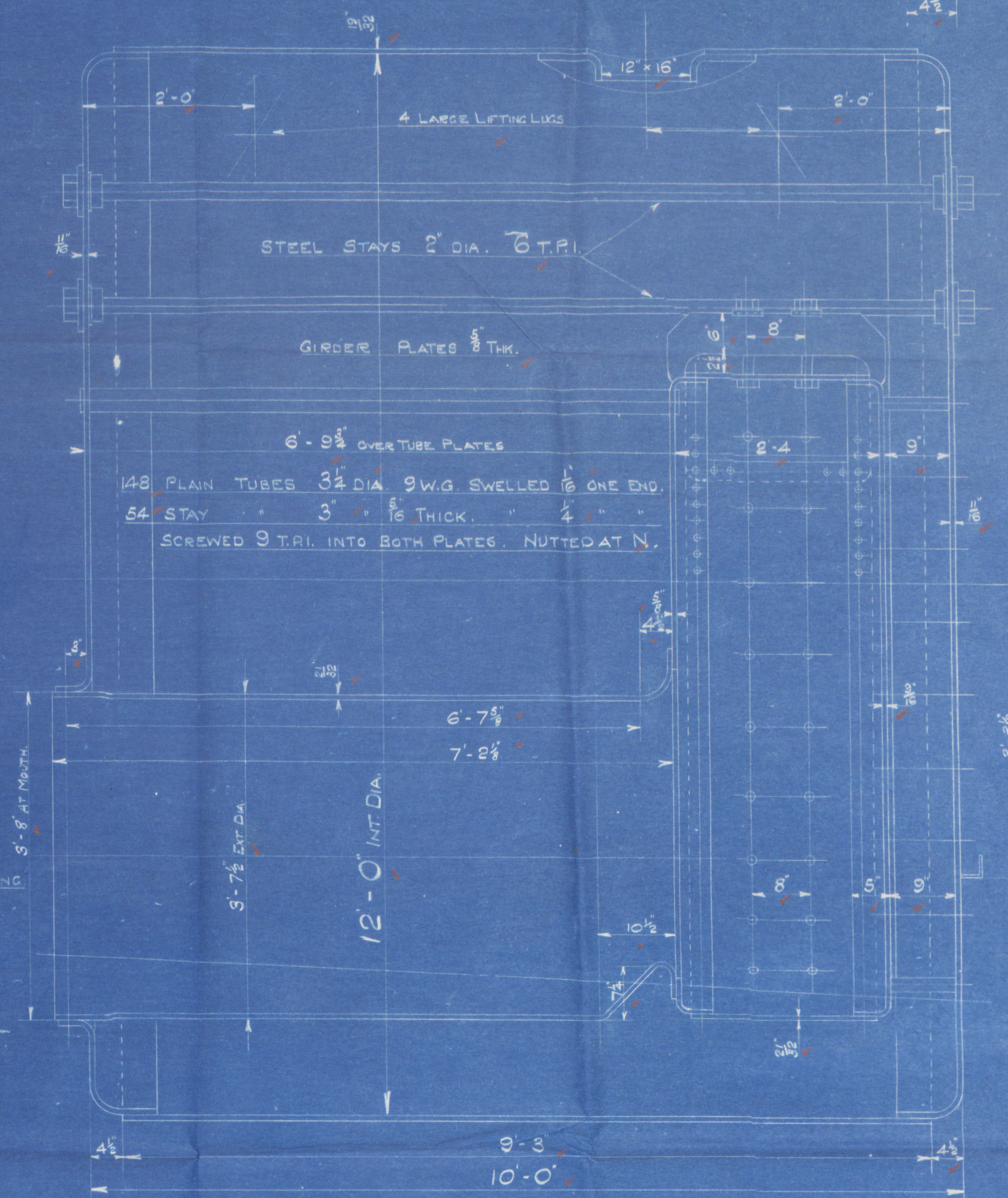


CIRCUM. SEAMS 1/8\"/>

COMBUSTION CHAMBER SCREW STAYS
SCREWED 9 T.P.I. NOTTED AT ENDS
AT BACK MARK $\frac{1}{2}$ DIA
" " " $\frac{1}{2}$ "
" SIDES & GIRDERS $\frac{1}{4}$ "



ALL INTERNAL RIVETING
1/8\"/>



HEATING SURFACE 1370 呎.
GRATE AREA (5'-6\"/>

12'-0\"/>

63/9-20-21

SCALE 1 TO A FOOT

DRG N^o 596

Stockton Chemical Engineers
& Riley Boilers Ltd.,
Stockton-on-Tees

Drawn By J.W.M.
DATE 8/1/07
Checked By J.D.O.
DATE

W433-0095

RETAIN

Messrs. Stockton Chemical Engineers &
Riley Bailers Ltd.,

Bailers Nos. 6319/20/21

Bailer No. 6319 S.S. Peterston.

Mdb rept. No. 16310.
(original plan fills into this case)

Bailer No. 6320 S.S. Clearton.

Mdb rept. No. 16401.

Bailer No. 6321 S.S. Tiberton

Mdb rept. No. 16407.

RETAIN

© 2019

W433-0095

LONDON COPY.

Lloyd's Register
Foundation