

DESCRIPTION OF MATERIAL & TENSILE LIMITS.

DESCRIPTION.	MATERIAL.	TENSILE STRENGTH.
SHELL PLATES, BUTT STRAPS, MANHOLE PLATE	STEEL.	29 TO 33 TONS.
GIRDER PLATES	"	29 TO 33 "
ALL OTHER PLATES	"	26 TO 30 "
MAIN STAY BARS	"	28 TO 32 "
SCREWED STAY BARS.	"	26 TO 30 "
RIVET BARS.	"	26 TO 30 "
TUBES.	IRON.	
FURNACE PLATES	STEEL	26 TO 30 TONS.

STEEL BOILER

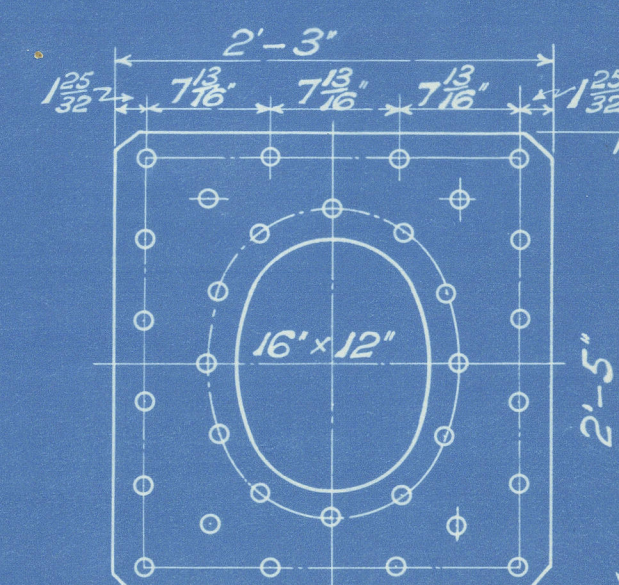
13'-0" EXTERNAL DIAM. x 11'-0" TOTAL LENGTH.
180 LBS WORKING PRESS. 320 LBS. TEST PRESS²

TO PASS LLOYDS SURVEY.

APPROVED BY LLOYDS.

SCALE 1" = 1 FOOT

2 - OFF THIS



MANHOLE COMPENSATING PLATE

THICKNESS OF PLATE 1/32"

DIAM. OF RIVET HOLES 1/8"

DRAWING NO 5927

HEATING SURFACE.

TUBES	1353.48 sq.
FURNACES	100.62 "
FRONT TUBE PLATE	23.7 "
BACK TUBE PLATES	35.22 "
COMBUSTION CHAMBERS	143.1 "

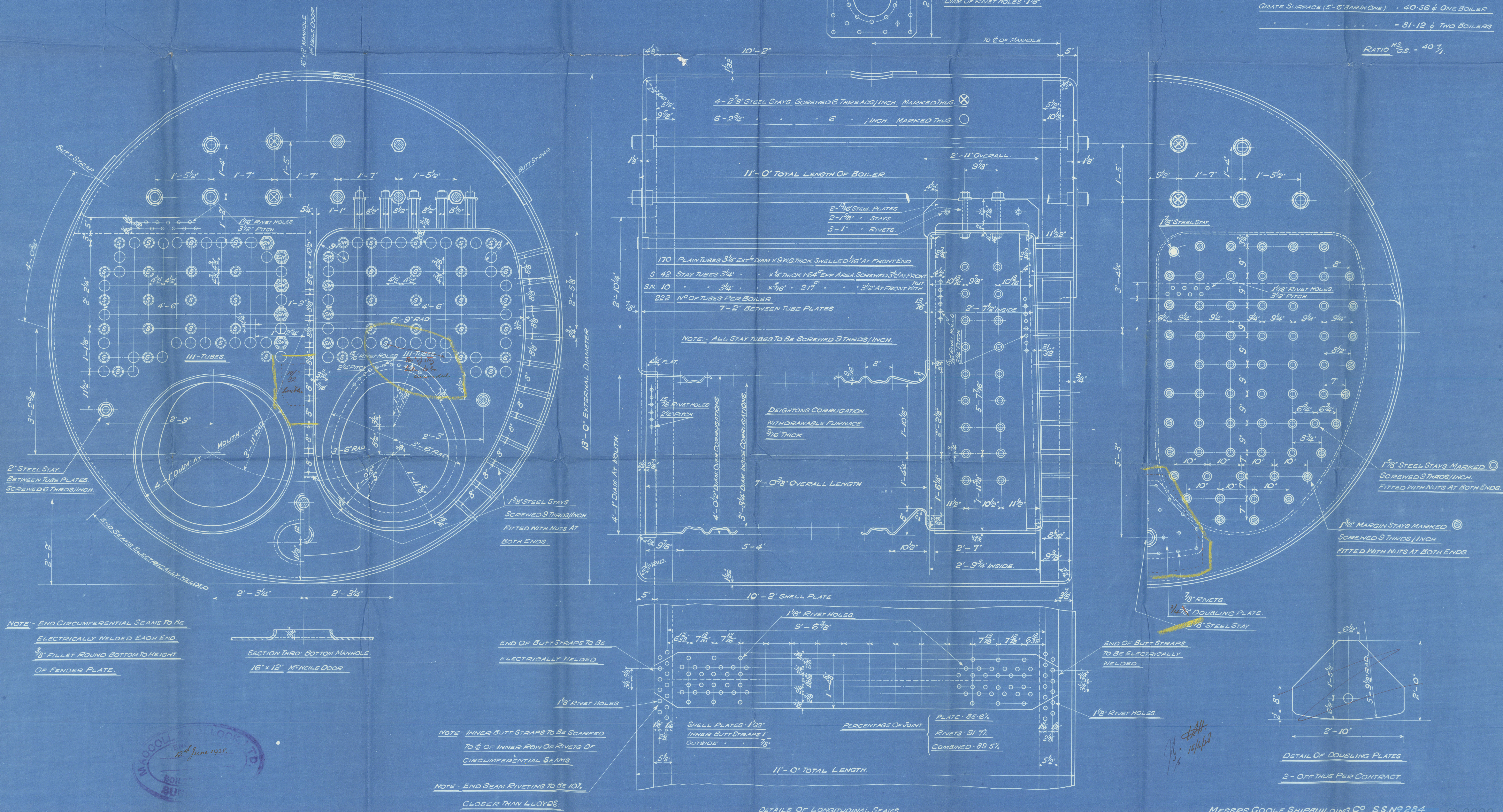
TOTAL FOR ONE BOILER 1656.12

TWO 3312.24

GRATE SURFACE (5'-6" BAR IN ONE) 40.56 sq. ONE BOILER

81.12 sq. TWO BOILERS

RATIO $\frac{H.S.}{G.S.} = 40 \frac{1}{2}$



MESSRS GOOLE SHIPBUILDING CO. S.S. NO 284

CONTRACT NO 364

© 2020

Lloyd's Register Foundation

SUNDERLAND.

MACCOLL & POWHOCK LTD.

CON. NO. 364

INTENDED FOR

THE GOOHE S. B. CO.'S

S. S. No. 284.

MAIN BOILERS.

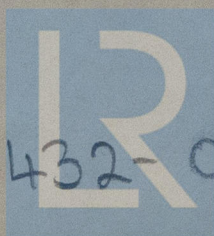
S. S. 'A'HELSTANE

29915

SUNDERLAND RPT. NO.

RETAIN

No. 4008
LLOYD'S TEST
320 lbs.
W. P. 190 lbs.
A. T. G. 28.9.28.



© 2020

W 432-0184

Lloyd's Register
Foundation