

Do all the Frames extend to the top height in the Poop? Yes Raised Quarter Deck? Bridge House? Forecastle? Yes
 To what height do the Reverse Frames extend? Yes
 Has the Poop or Raised Quarter Deck an efficient Iron Bulkhead at the fore end? Yes
 Give particulars of the means for closing the openings in Bulkhead no openings
 Is the Poop or Raised Quarter Deck connected with the Bridge House? no Has the Bridge House an efficient Bulkhead at the fore end? Bridge
 Give particulars of the means for closing the openings in Bulkhead both in
 What is the thickness of the Bridge Front plating? and Coaming plate?
 Give scantlings and spacing of the Stiffeners
 Are bracket plates fitted at each end of the Stiffeners? Are hor'l. brackets fitted connecting Bridge Bulk'd. with Bulwarks?
 Has the Bridge House an efficient Iron Bulkhead at the after end?
 How are the openings closed?
 Is the Forecastle at least as high as the main or top-gallant rail? Yes Has the Forecastle an efficient Iron or Wood Bulk'd. at after end? Yes
 Are the Engine and Boiler openings covered by a Bridge, Poop, Raised Quarter Deck, or enclosed by a Strong Iron or Steel Deckhouse? Poop and Steel deckhouses
 If the openings are not so protected are the exposed parts of the Casings efficiently constructed?
 Give thickness of plating; scantlings and spacing of Stiffeners
 What is the height of the exposed Casings? Are suitable means provided for closing all openings in them in bad weather?

Are the Weather Deck Hatchways efficiently constructed and at least equal to the requirements of Section 28 of the Rules for 1904-5? Give particulars below:-

Position and Size.	Item.	Ship.	Rule.	Ship.	Rule.	Ship.	Rule.	Ship.	Rule.	Ship.	Rule.
COAMING.	Height above top of DECK	2'-0"	Rule								
	Thickness	4.0									
	Sides	4.0									
	Ends	4.0									
SHIFTING BEAMS OR WEB PLATES	Number										
	Section and Scantlings										
	Material										
* FORE AND AFTERS	Number										
	Section and Scantlings										
	Material										
HATCHES Thickness		2 1/2"									
Remarks											

(If the tables, state vertices

The following information is
 What is the thickness of the B

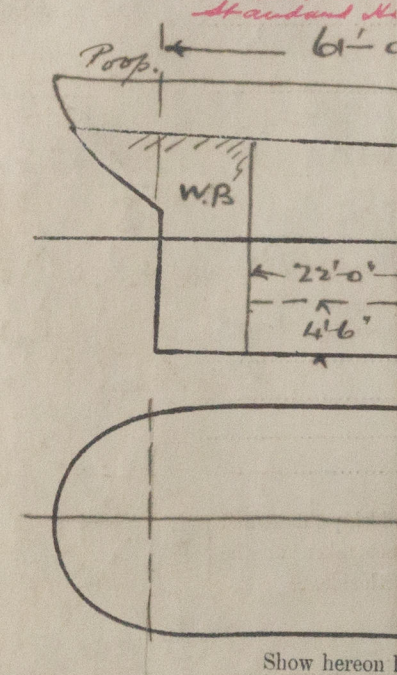
Delete the words
 that do not apply

Length of I

Area of Fre

Ft. Tenths.

Tumble
Actual length of ship
as measured to top of main
mean height of main
bulkhead to
bulkhead to



Show hereon li

State any special features in the co

Builder's name and yard n

Names of sister vessels

Owners United Molasses, Co. Ltd.

Address London.

Fee £ 3 : 13 : 4
To be applied for with 2. 5. fees.
Received by me

Lloyd's Register of Shipping

Index No. 32770
 (For London Office only)

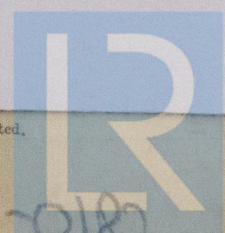
FREEBOARD REPORT on the Messrs The Goole S.B. Co's Proposed Oil Tanker 185ft in length

It is submitted the Freeboards given on the accompanying form being those required by the Tables merit approval, subject to the particulars and dimensions now supplied being accepted on completion of the ship and to any openings in the Poop front being closed as required for full allowance.
 The freeboards have been computed on a corrected tonnage coefficient of .75 and are, therefore, subject to alteration if found necessary.

Wine
Relain Plan
Preliminary
S.W.B.
26-5-28
W432-0180.1

In dual-decked vessels the total standard mean sheer means the sheer measured at the stem and stern-post. In vessels having poops and forecastles, it means the sheer measured at points distant one-eighth of the vessel's length from stem and stern-post.

survey, and also the usual load draft forward and aft should be reported.



© 2020

Lloyd's Register Foundation