

Nº 207.

MIDSHIP SECTION.

DIMNS: 180'-0" B.P. x 29'-6" x 11'-9" M.P.

SCALE: 1/2 INCH = 1 FOOT.

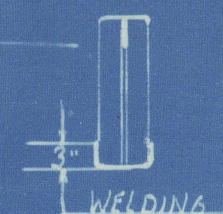
TO CLASS 100A1 AT LLOYDS FOR CARRYING PETROLEUM IN BULK.

LONGITUDINAL FRAMING AT BOTTOM IN CENTRE TANKS & IN TRUNK.

EQUIPMENT.

2 BOWER ANCHORS	15 3/4 CWTs EACH STOCKLESS.
1 "	1 1/2 " STOCKLESS.
1 STREAM "	4 3/4 " EX STOCK.
210 FMS. 1 1/4" STUD LINK CABLE.	
60 "	3" STEEL WIRE.
75 "	2 3/4 "
90 "	2 1/4" FLEX. STEEL WIRE.
90 "	1 3/4 "

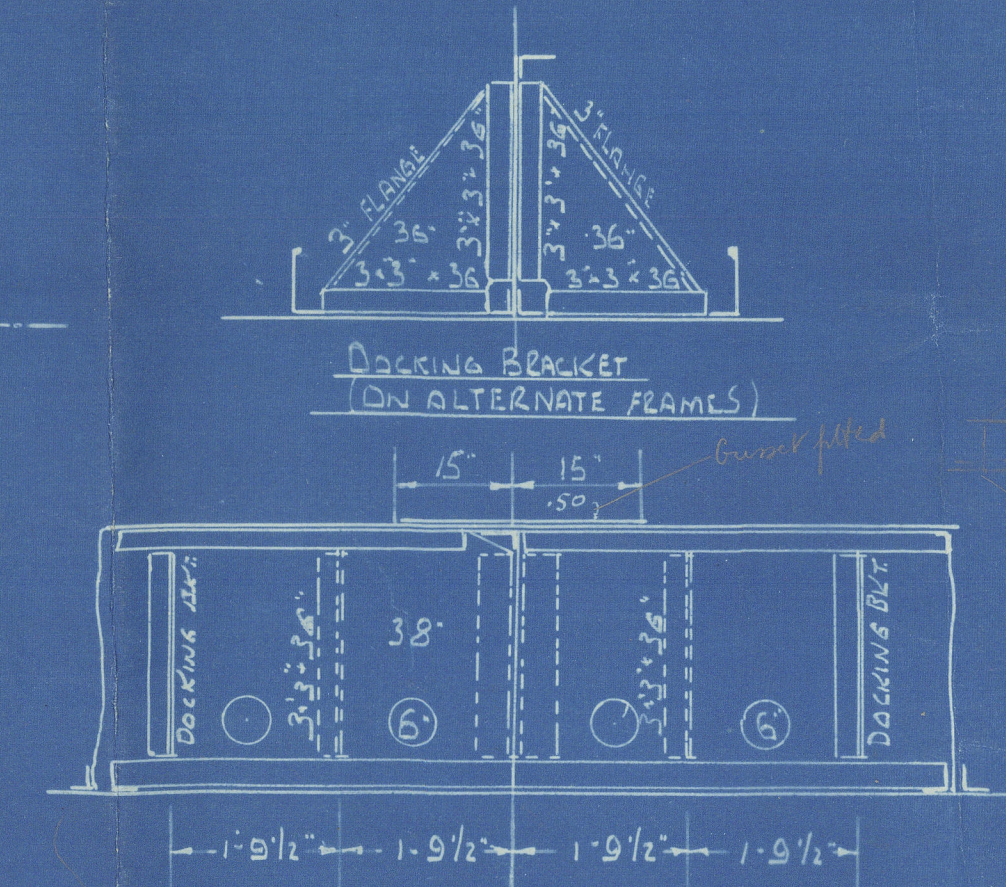
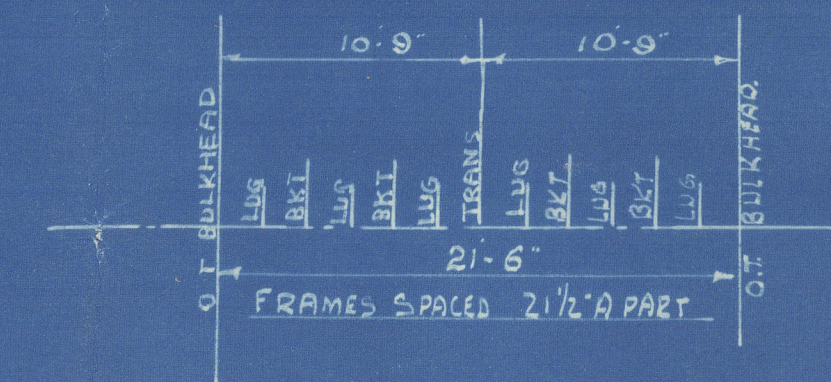
IN CONNECTIONS MARKED THUS ∇ END OF THE BAR ON FACE SIDE OF BULKHEAD TO BE WELDED PRIOR TO RIVETING AS SHOWN IN SKETCH BELOW.



Centre tanks tested to 5'-0" above trunk top
Sls - - - 7'-6" - Deck

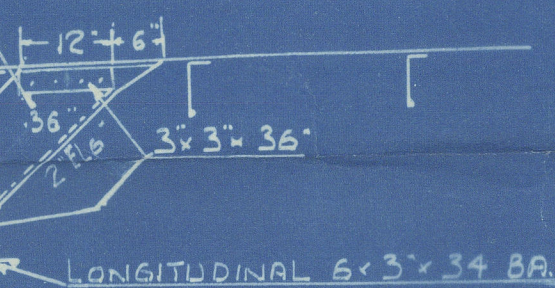
EQUIPMENT No.

L(B+D)	= 7425	7434
L.D	= 2115	2119
D	= 11.75	11.75
L/D	= 15.36	15.34
L(B+D)	7425.0	7434.48
POOD	60.725.75	326.25
CABING	29.725.5	105.1
"	24.2.5	24.0
TRUNK	38.4.5	196.6
FORECASTLE	108.75	156.6
QUARTER DECK	60.4	240.0
	8472.35	8468.02
	8460.35	



INTERCOSTAL GIRDER ON CENTRE LINE

2 BRACKETS BETWEEN EACH TRANSVERSE (i.e. AT ALTERNATE FRAMES)



LONGITUDINAL 6'-3" x 34 B.A.

SEE PLAN OF ALTERNATIVE FRAMING

CENTRE TANK

SEE PLAN OF ALTERNATIVE FRAMING

SEE APPROVED PLAN OF ALTERNATIVE FRAMING

SECTION THRU WING TANKS SHOWING INTERMEDIATE FRAMING BETWEEN TRANSVERSES

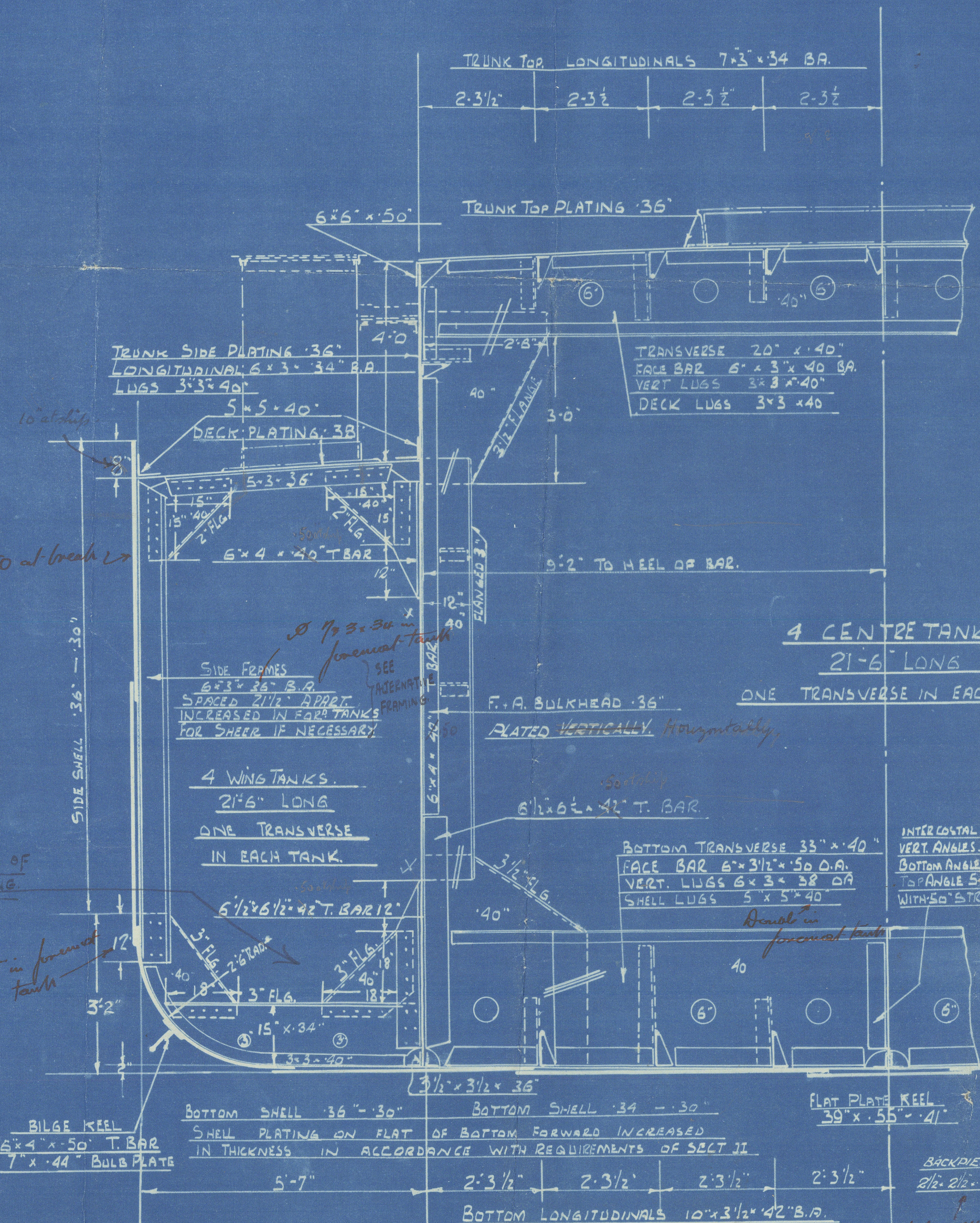
FRAMES IN TANK

6'-3" x 36 B.A.	21' 6" APART
E. ROOM	4'-3" x 30
PEAKS	4'-3" x 30
REVERSE FRAMES	2'-6" x 30 - 2'-6" x 30
FLOORS	17'-6" x 30 - 17'-6" x 30
STEM	6'-1 1/2"
STERNWALL	6'-1 1/2"

Bottom in ES forward of frame 16 and forward of tankline to be considered with detailed plan to be submitted

SECTION AT ENDS.

SECTION SHEWING TRANSVERSE



Bottom and Side Shell clear of oil tanks 35'-31"
2 Strakes each side increased forward as per rule

APPROVED

LLOYD'S REGISTER OF SHIPBUILDERS

W. H. HARRISON

8-11-39

G. BROWN & Co. (MARINE) LTD. (1)

YARD No. 207

MIDSHIP SECTION.

T. S. M. V. "AFRICA SHELL"

GRK. 1st. ENTRY RPT. No. 20695.

RETAIN



© 2020

Lloyd's Register
Foundation

W430-0209