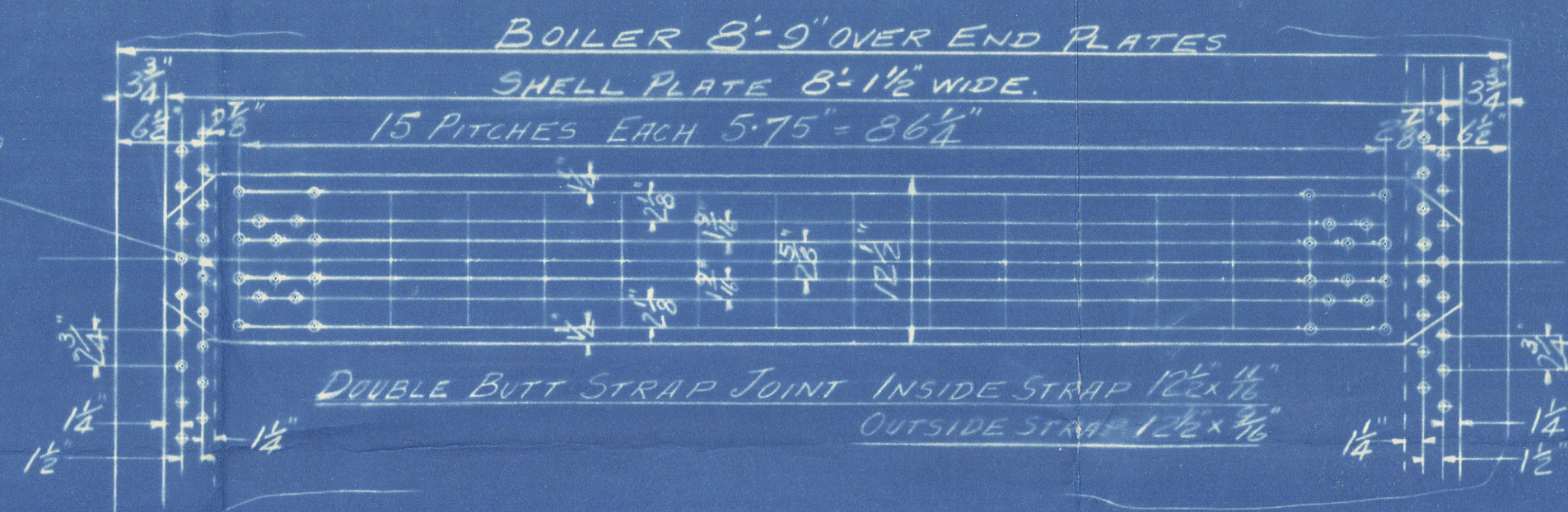
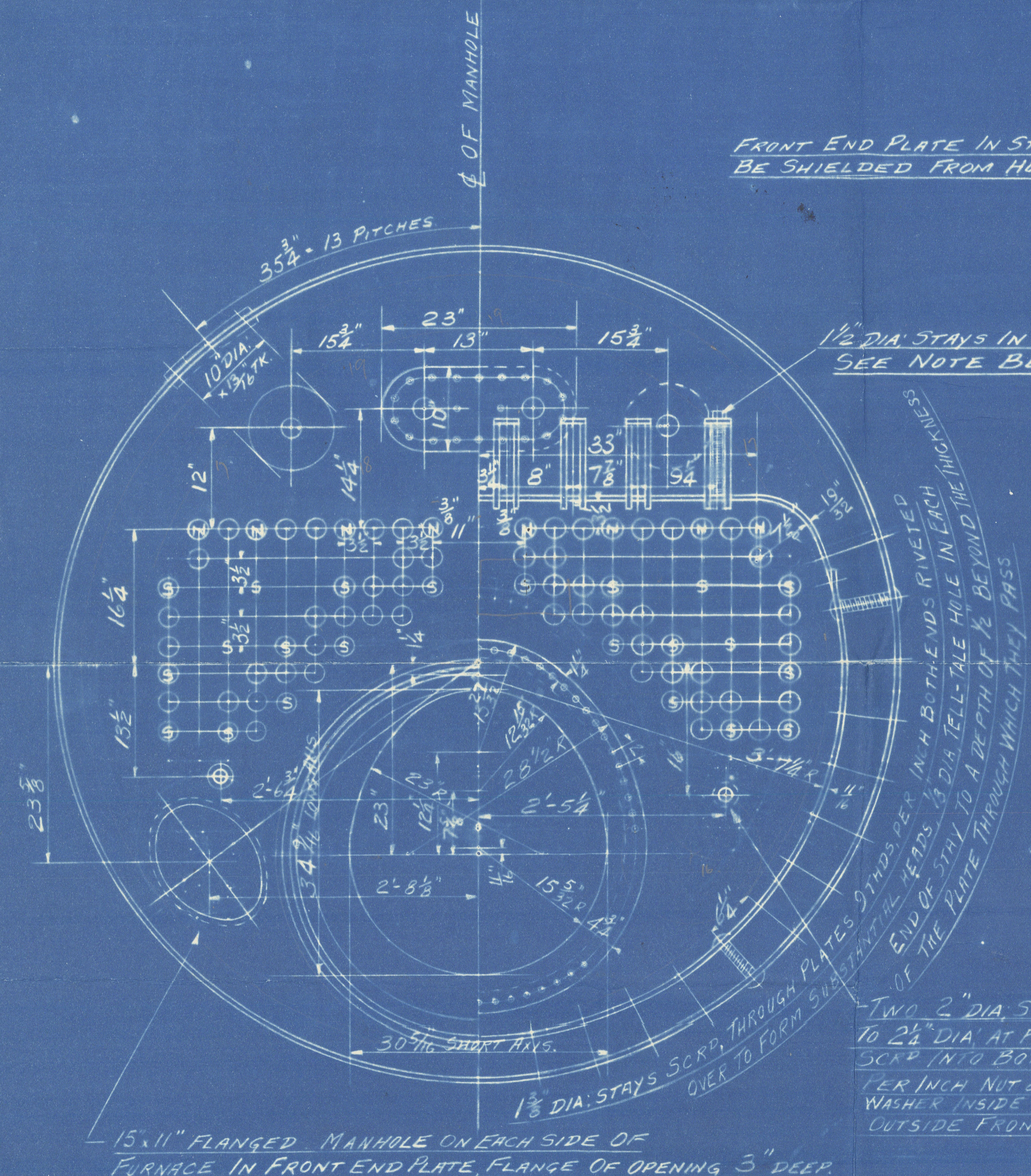
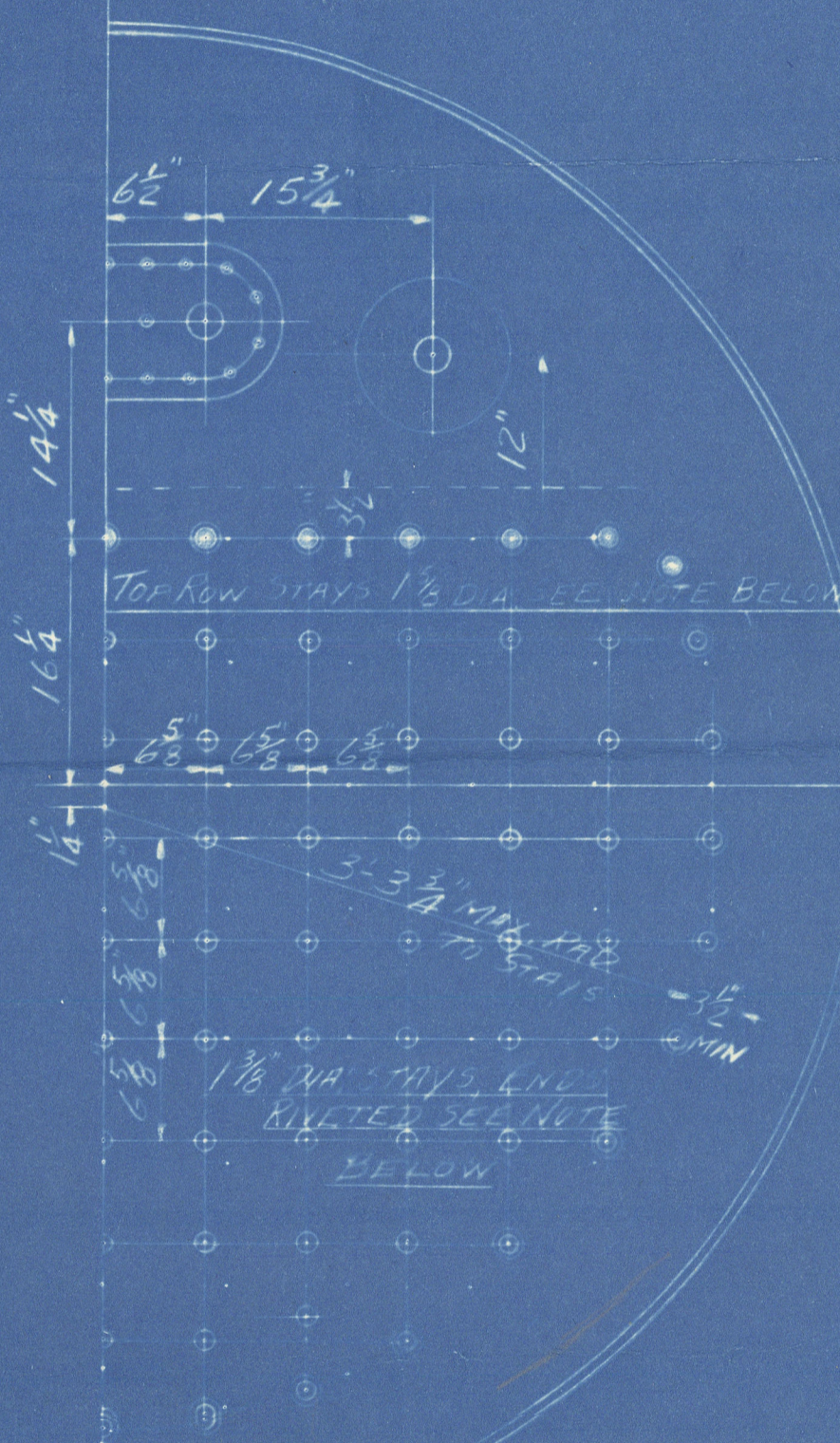
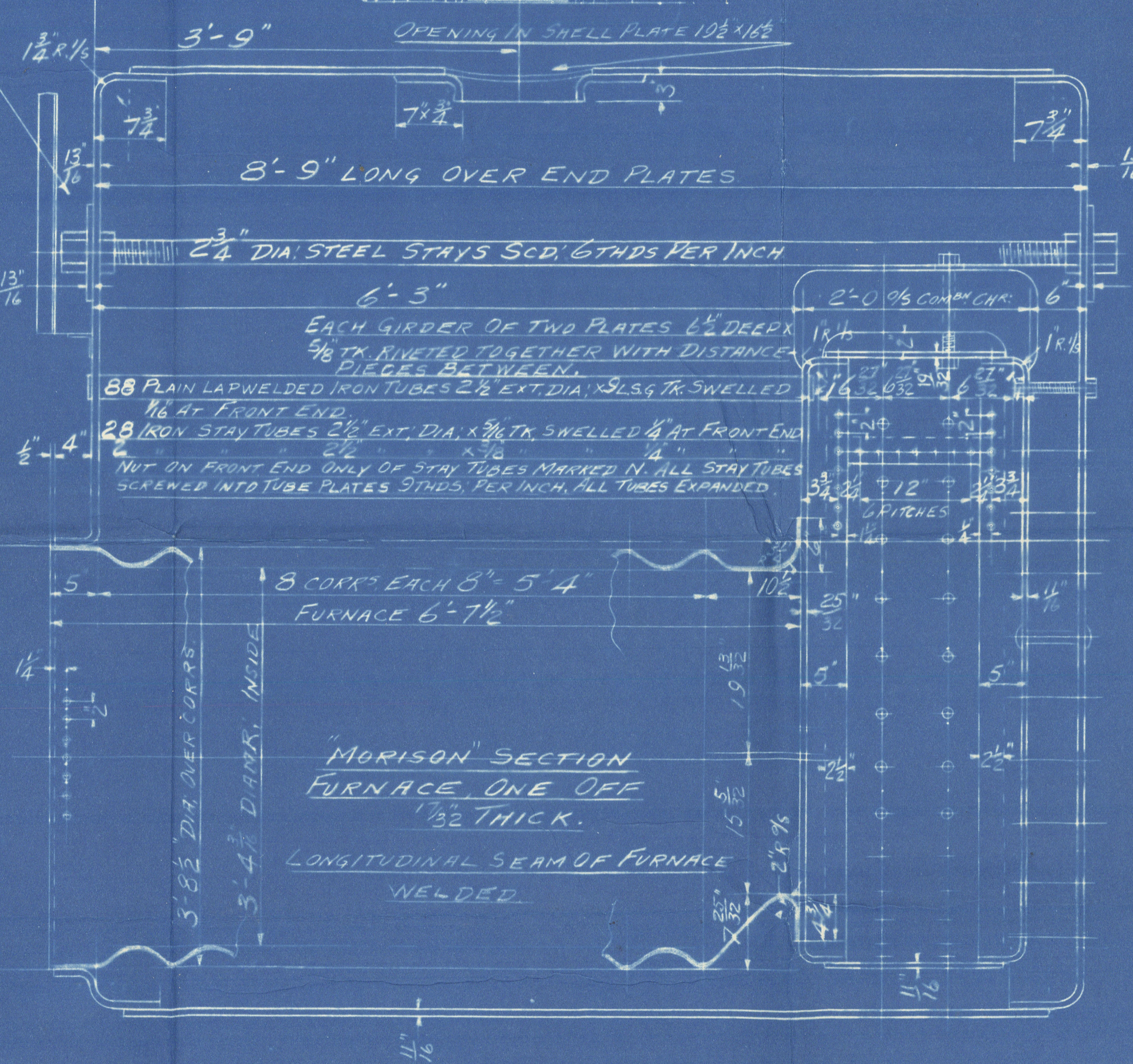
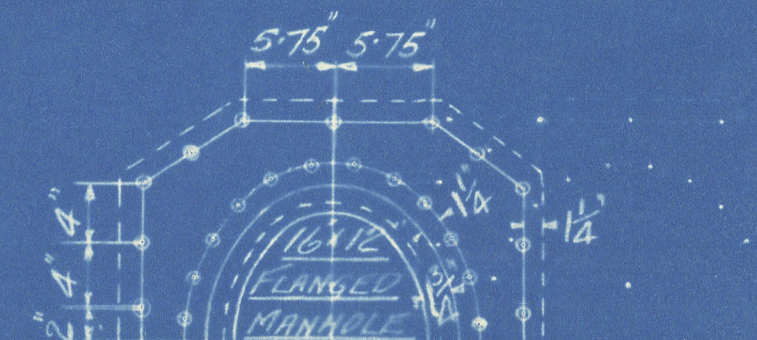


22 DEC 1937

NOTE - BOTH ENDS OF INSIDE BUTT STRAP SCARPHED  
& TUCKED BETWEEN SHELL PLATE &  
END PLATE FLANGE & CAULKED



FRONT END PLATE IN STEAM SPACE MUST  
BE SHIELDED FROM HOT GASES.



TWO 2" DIA. STAYS SWELLED  
TO 2 1/4" DIA. AT FRONT END PLT.  
SCRP INTO BOTH PLATES 9 THDS.  
PER INCH NUT & 3" DIA. BEVELLED  
WASHER INSIDE COMB. CHAM. &  
OUTSIDE FRONT END PLATE.

# HEATING SURFACE

HEATING SURFACE IN TUBES	472 #.	RETARDERS FITTED IN ALL TUBES.
" " " COMB. CHR.	71 #.	BOILER OIL FIRED UNDER
" " " FURNACE	69 #.	FORCED DRAUGHT.
" " " TOTAL	612 #.	

MATERIAL: ALL PARTS OF BOILER TO BE OF STEEL EXCEPT  
TUBES WHICH ARE OF IRON LAP WELDED.

STAYS: - 1 1/2" DIA. STAYS IN GIRDERS ONLY, 1 3/8" DIA. THUS - 1 1/8" DIA. THUS - ALL WATER-SPACE &  
GIRDER STAYS SCREWED THROUGH PLATES CONTINUOUS THREAD 9 THDS PER INCH, NUT  
ON EACH END OF GIRDER STAYS & EACH END OF COMB. CHR. BACK PLATE MARGINAL STAYS SHOWN  
THUS - OR THUS - ALL OTHER WATER-SPACE STAYS TO HAVE ENDS RIVETED TO FORM SUBSTANTIAL HEADS.

RIVETS: - ALL RIVETS 3/4" DIA; ALL RIVET HOLES DRILLED 1 1/16" DIA;

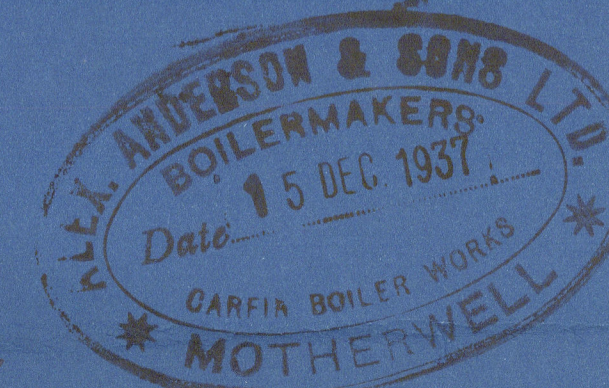
## TENSILE STRENGTH OF MATERIAL

SHELL PLATE, BUTT STRAPS	29 to 33.
GIRDER PLATES, LONGTL. STAYS	28 to 32.
END PLATES, FURNACE, COMB. CHAM. PLTS.	26 to 30.
MANHOLE COMB. PLT; WATER-SPACE & GIRDER STAYS	26 to 30.
RIVET BARS, BREAST STAYS	26 to 30.

ALL WATER-SPACE STAYS  
(EXCLUDING GIRDER STAYS) TO HAVE  
1/8" DIA. TAIL HOLE DRILLED  
IN EACH END TO A DEPTH OF 1/2"  
BEYOND THE THICKNESS OF THE  
PLATES THROUGH WHICH THEY PASS.

JOINT PERCENTAGES.	
LONGITUDINAL SEAM PLATE,	85.75
" " " RIVET,	97.75
" " " COMBINED,	91.25
CIRCUMFERENTIAL SEAMS PLATE,	70.4
" " " RIVET,	43.6
MANHOLE COMB. PLT. PLATE,	88.5
" " " RIVET,	83.75
" " " COMBINED,	94.0

APPROVED BY DATE  
LLOYDS 23 DEC 1937



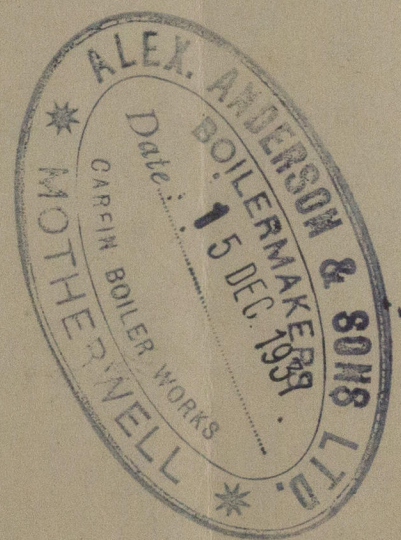
## MARINE BOILER NO 3507.

BOILER 8'-3" INTERNAL DIA. X 8'-9" LONG OVER END PLATES FOR 180 LBS. PER D" WORKING PRESSURE  
HYDRAULIC TEST PRESSURE 320 LBS. PER D". TO PASS LLOYDS' CERTIFICATE SUPPLIED.

SCALE 1 INCH = 1 FOOT.

DRAWING NO 875. DATE 27/11/37.



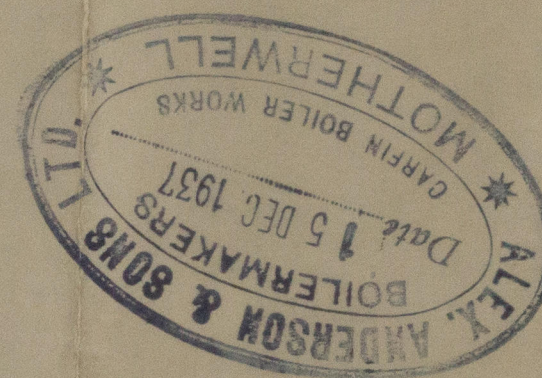


W430-0206



© 2020

Lloyd's Register  
Foundation



Alex. Anderson & Sons

Blr No 3507.

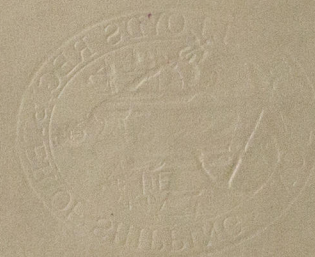
W.P. = 180 lbs.

for George Brown & Co  
(Marine) Ltd, Greenwich

Vm No 207

GLASGOW REPORT No 60231

RETAIN



© 2020

Lloyd's Register  
Foundation

W430-0206