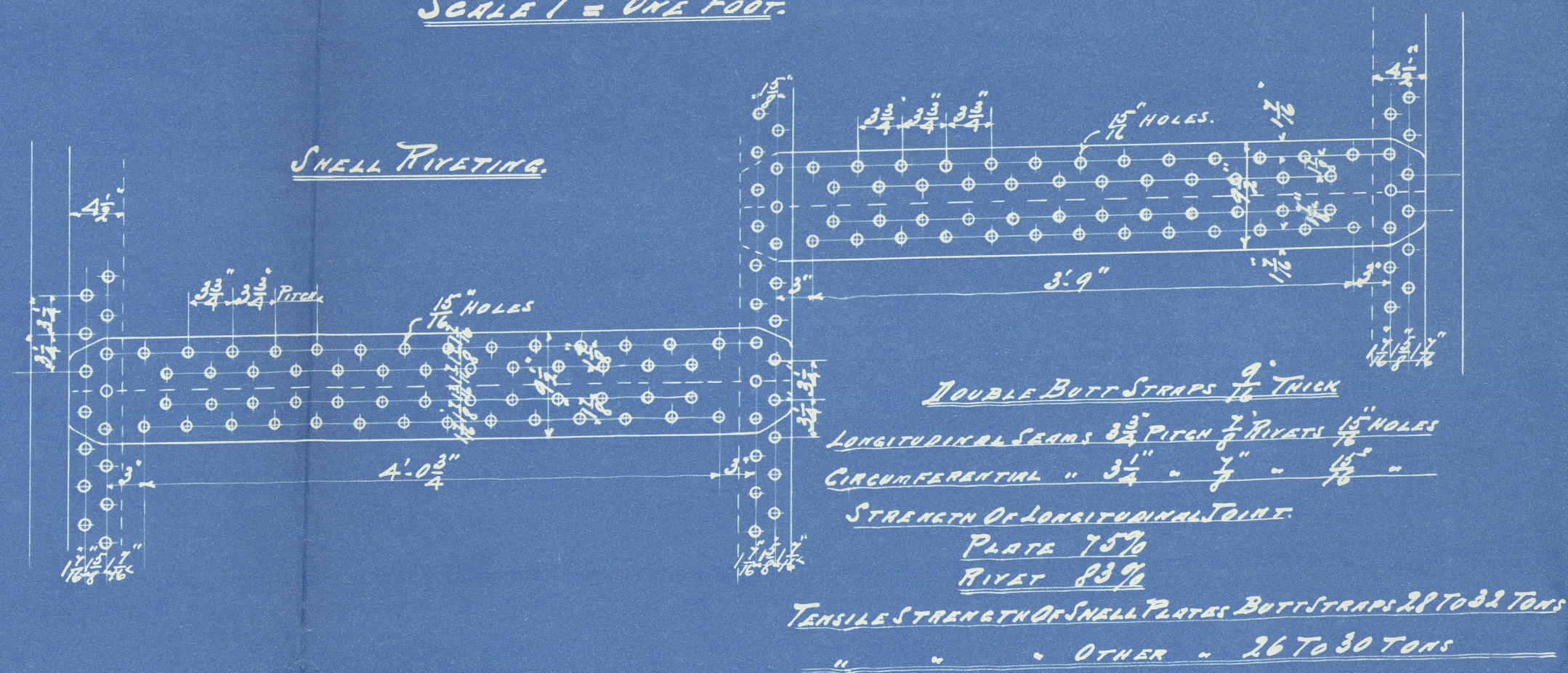


# — DONKEY BOILER N° 477 481

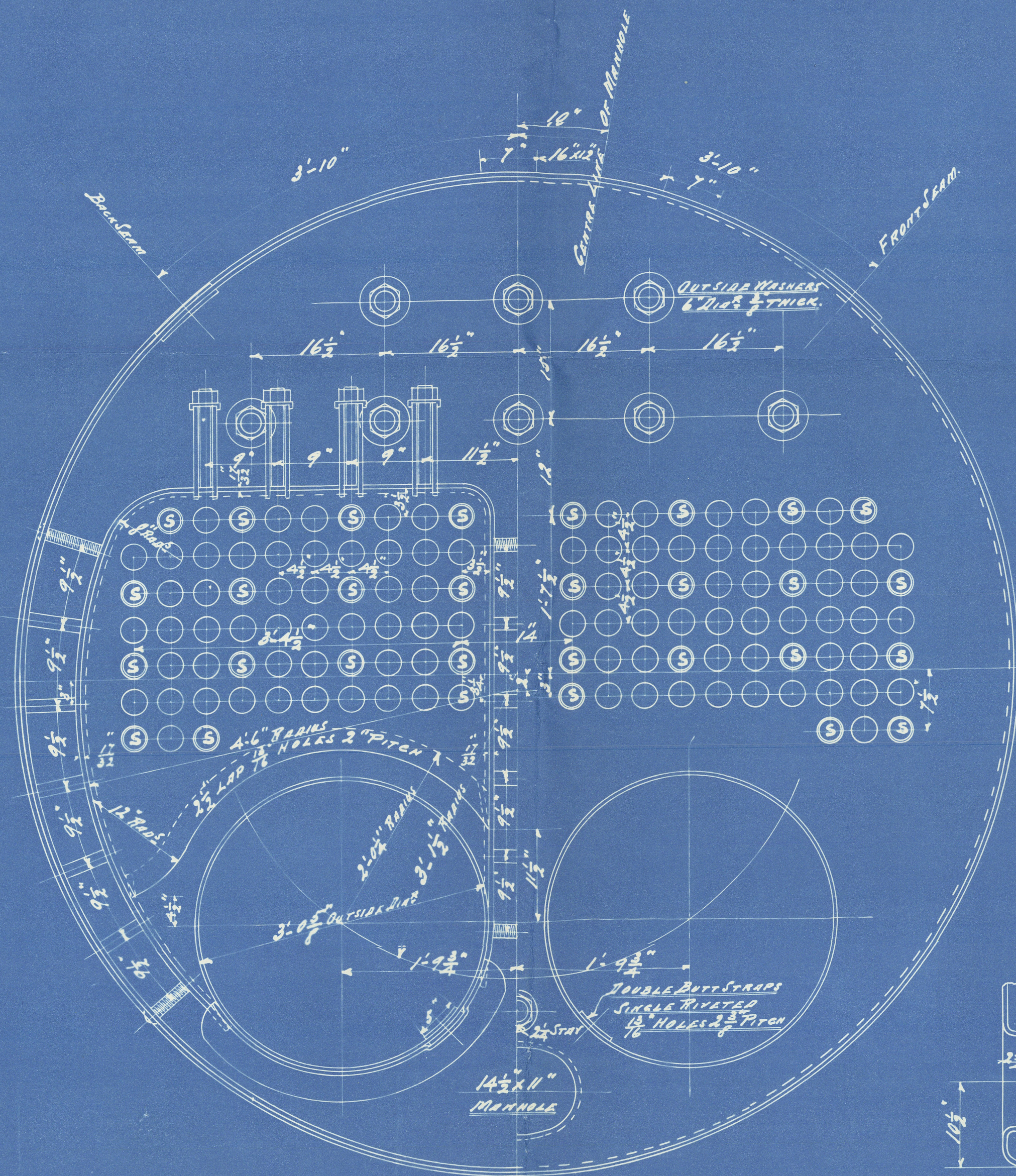
FOR MESSRS FURNESS WITHY & CO'S S.S. N° 269 270

SCALE 1" = ONE FOOT.

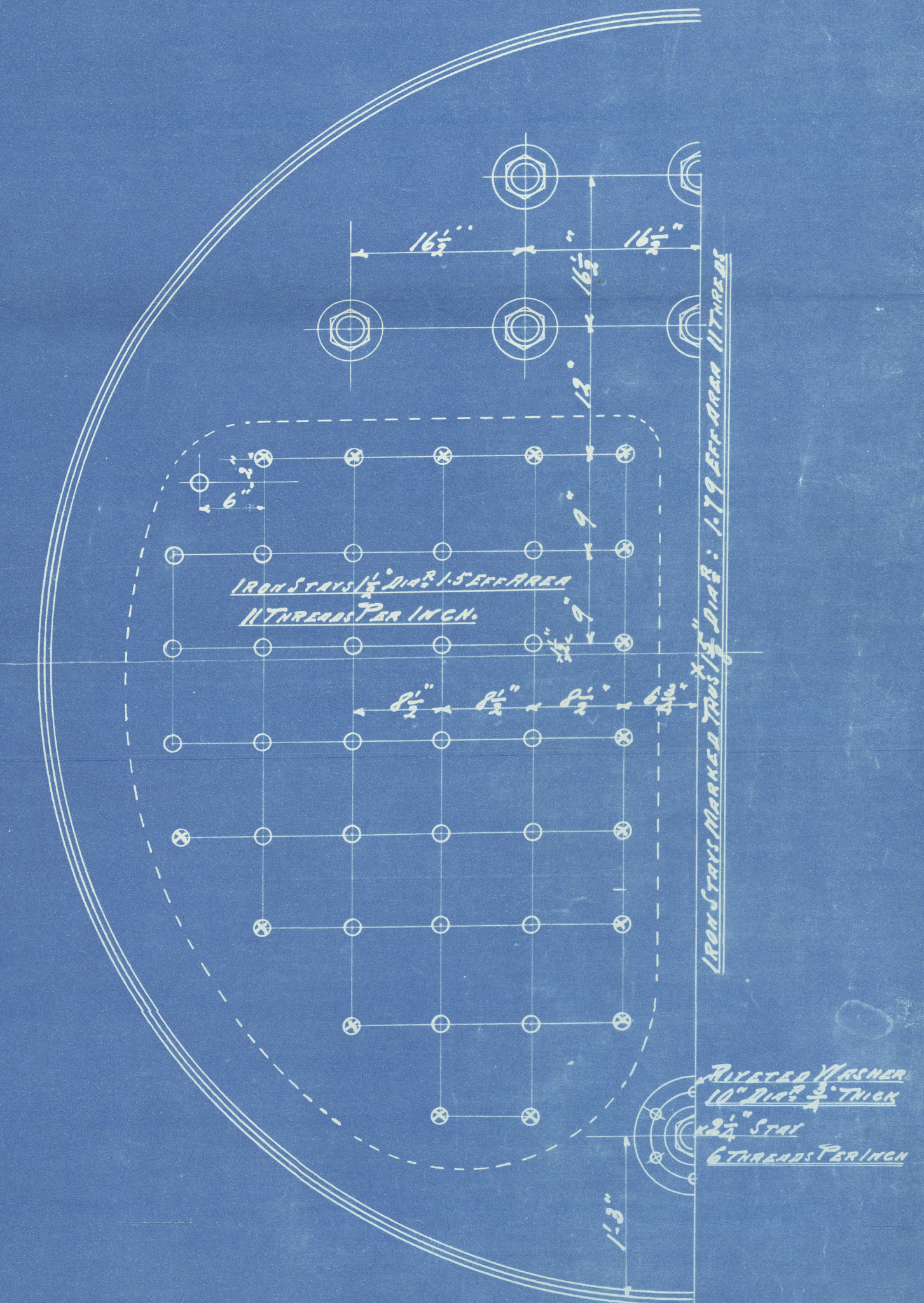
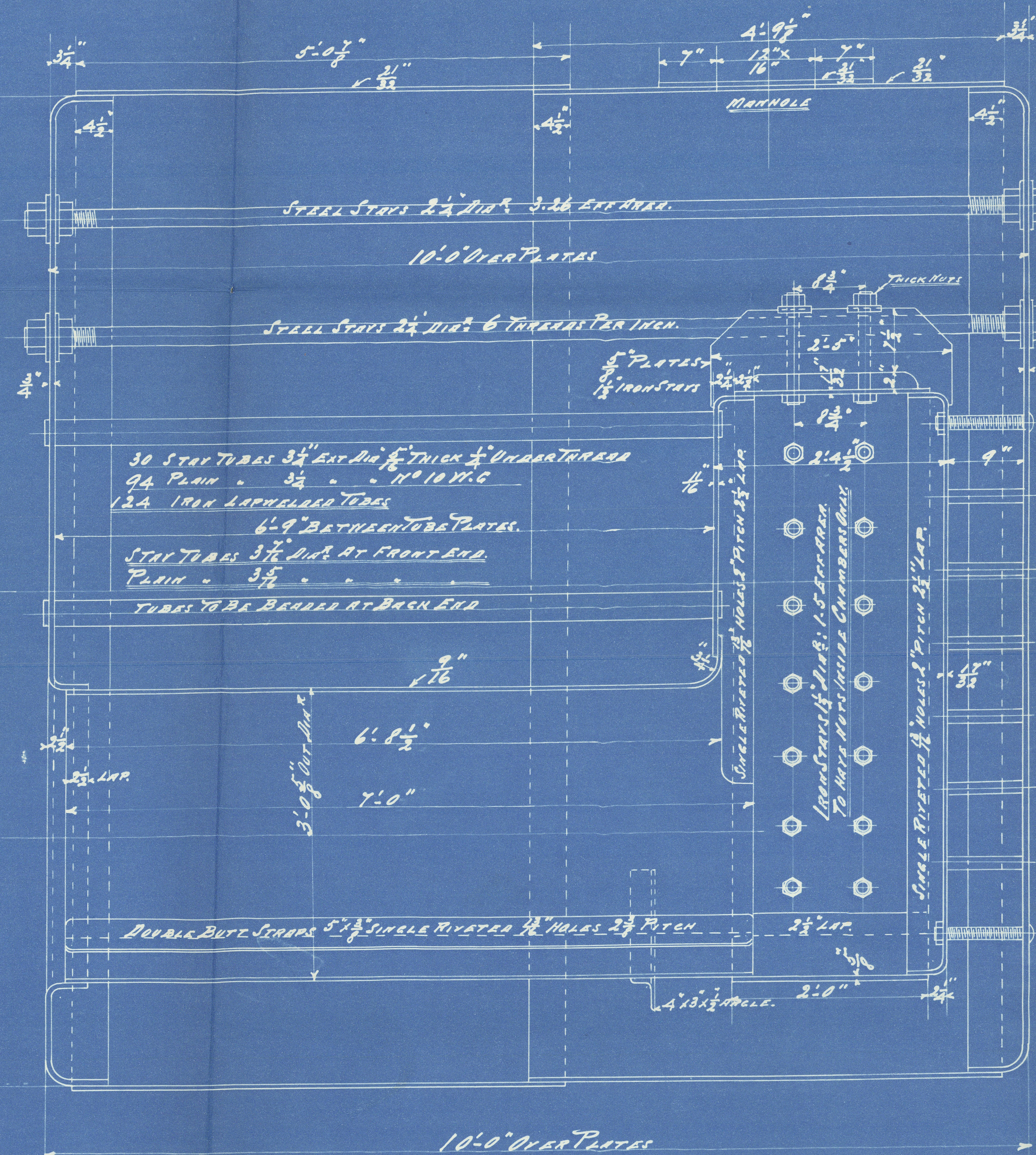
WORKING PRESSURE 100 LBS PER SQUARE INCH  
TEST " 200 "  
HEATING SURFACE 940 SQ. FEET  
GRATE " 29 "  
CONSTRUCTED UNDER LLOYD'S SURVEY.



Plates 75



SECTION THRU MANHOLE  
M'HEILS DOOR



RIVETS 10" DIA. 1/2" THICK  
STEEL STAYS  
6 THROUGH PER INCH



Newcastle on Tyne  
Furness Witherby & Co No 270  
R<sup>t</sup> Stephenson & Co Boiler 481

RETAIR

S.S. "Manchester Marine" Particulars sent  
to W. Harkness 29/1/04  
- S.S. No 270  
Boiler No 481.

No 6682  
Lloyd's List  
200 cl  
L.H.H.  
15-10-03-

Duplicate of R<sup>t</sup> S. & Co Boiler 477  
Furness Witherby & Co. S.S. No 269



© 2020

Lloyd's Register  
Foundation