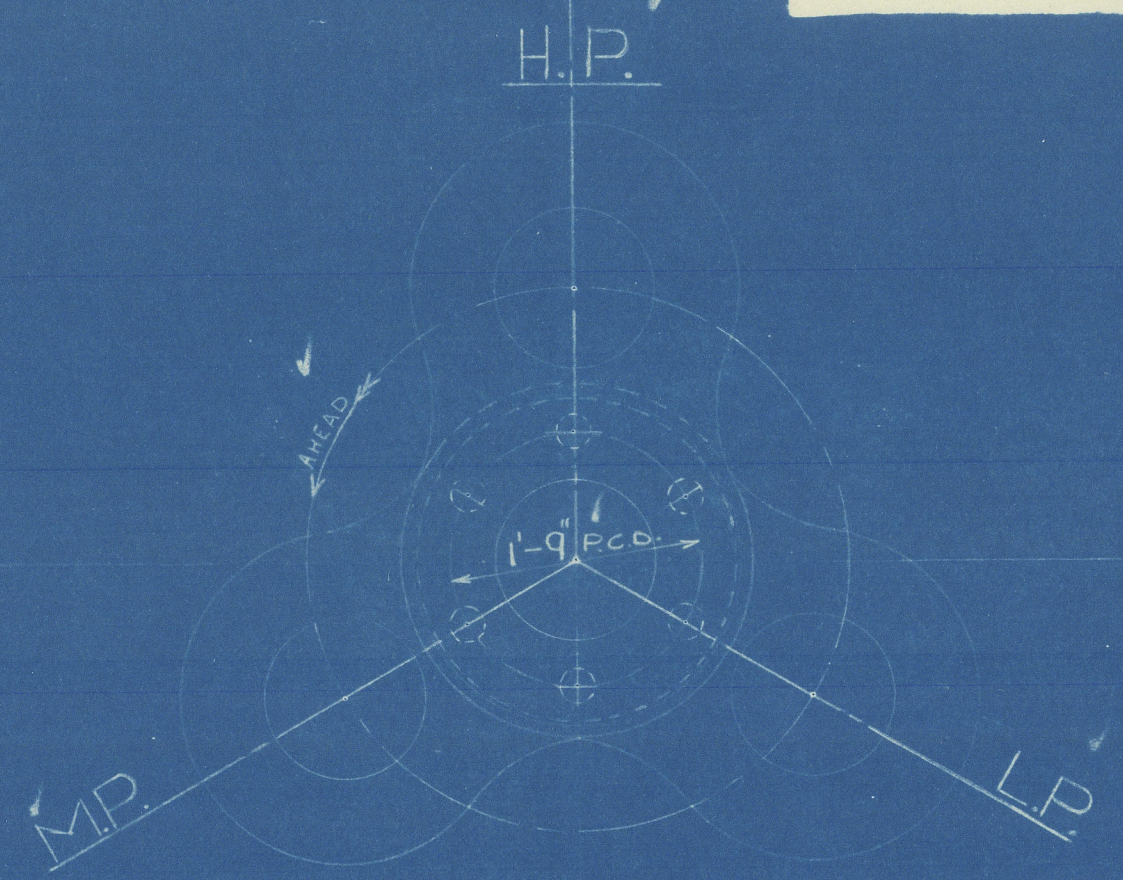
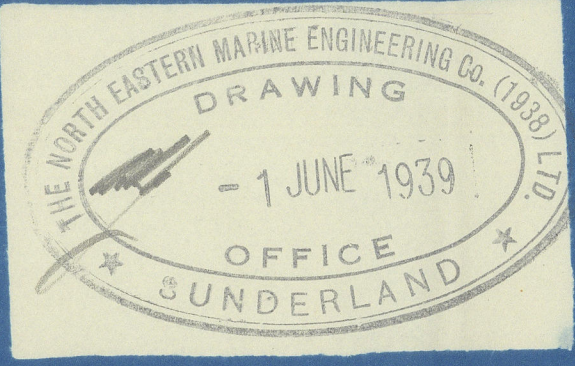


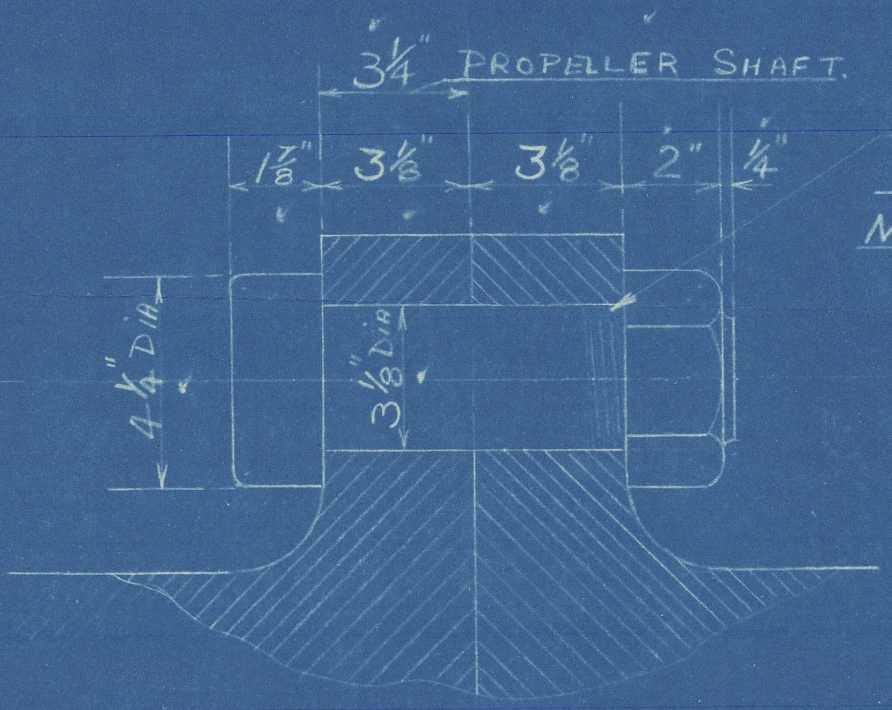
Two

THE NORTH EASTERN MARINE ENGINEERING CO (1938) LTD
SUNDERLAND
SCALE 3/4 INCH = 1 FOOT

SCHEDULE CA



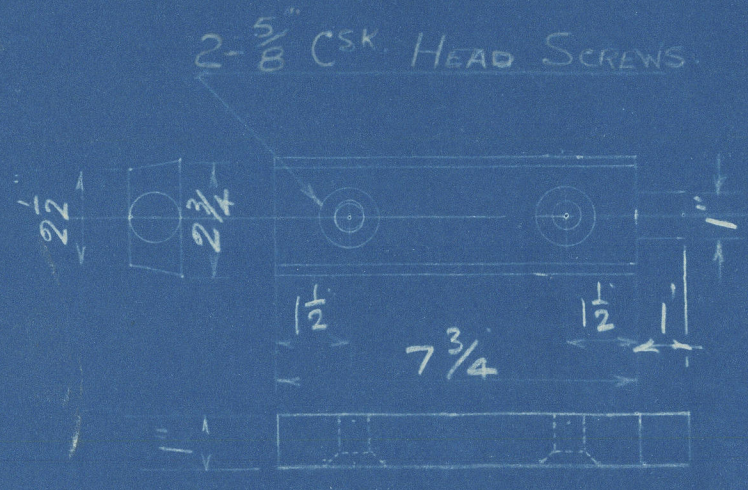
LOOKING AFT.



SCREWED 2 3/4 DIA
6 THREADS PER INCH
NUT 4 1/2 OVER FLATS

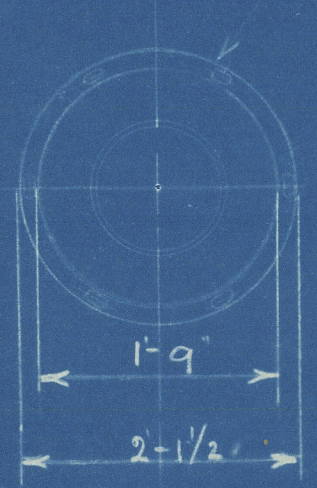
ALL COUPLING BOLTS TO BE DRIVEN
FROM AFT SIDE

ENGINE:-	LLOYDS RULE SIZES
23 1/2 x 38 x 66 x 220 lbs	CRANKSHAFT 13.3
45	THRUST SHAFT 13.3
PROPELLER 18'-6" DIA	TUNNEL SHAFT 12.67
	PROPELLER SHAFT 14.2



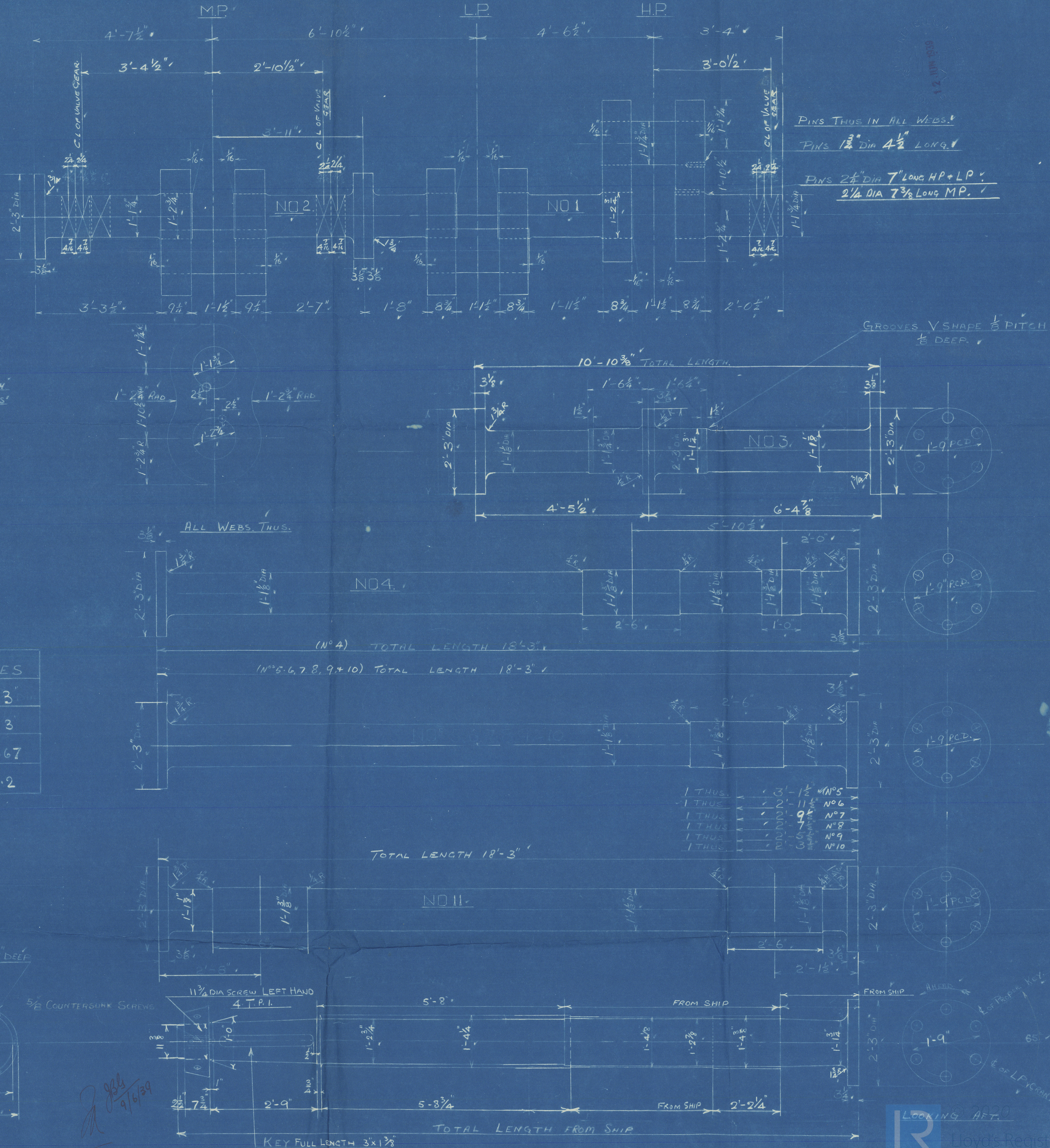
STOPPER FOR PROPELLER NUT

6 HOLES 1 1/2 DIA 1 3/4 DEEP



5/8 COUNTERSUNK SCREWS

2 gals
9/6/39



PINS THUS IN ALL WEBS.
PINS 1 1/2 DIA 4 1/2 LONG
PINS 2 1/4 DIA 7 LONG HP + LP
2 1/4 DIA 7 3/8 LONG MP

GROOVES V SHAPE 1/8 PITCH
1/8 DEEP

- 1 THUS. 3'-1 1/2" NO.5
- 1 THUS. 2'-11 1/2" NO.6
- 1 THUS. 9" NO.7
- 1 THUS. 7" NO.8
- 1 THUS. 6" NO.9
- 1 THUS. 6" NO.10

LOOKING AFT

W43-0018

DRAWING NO 10605

CONTRACTS 2952-3

Sid. Copy.

"Harpagus"



Sld 32855.

The D. E. Marine Eng. Co.

Con. 2952

Shafter

Bartram's 282.

"Harpagus"

BUNDERLAND RPT. NO. 32855



© 2020

Lloyd's Register
Foundation

W43-0018