

# STOOMKETELS N<sup>o</sup> 966-967

SCHAAL 1 OP 12

GECONSTRUEERD VOLGENS DE REGELS VAN BRITISH LLOYD

ALLES SIEMENS MARTIN ZACHT STAAL

STOOMDRUK 180 LBS = 12.7 KG PER CM<sup>2</sup>

TERW. OPPER VLAK PER KETEL

PIJPEN UITW. 1200 VOET<sup>2</sup>

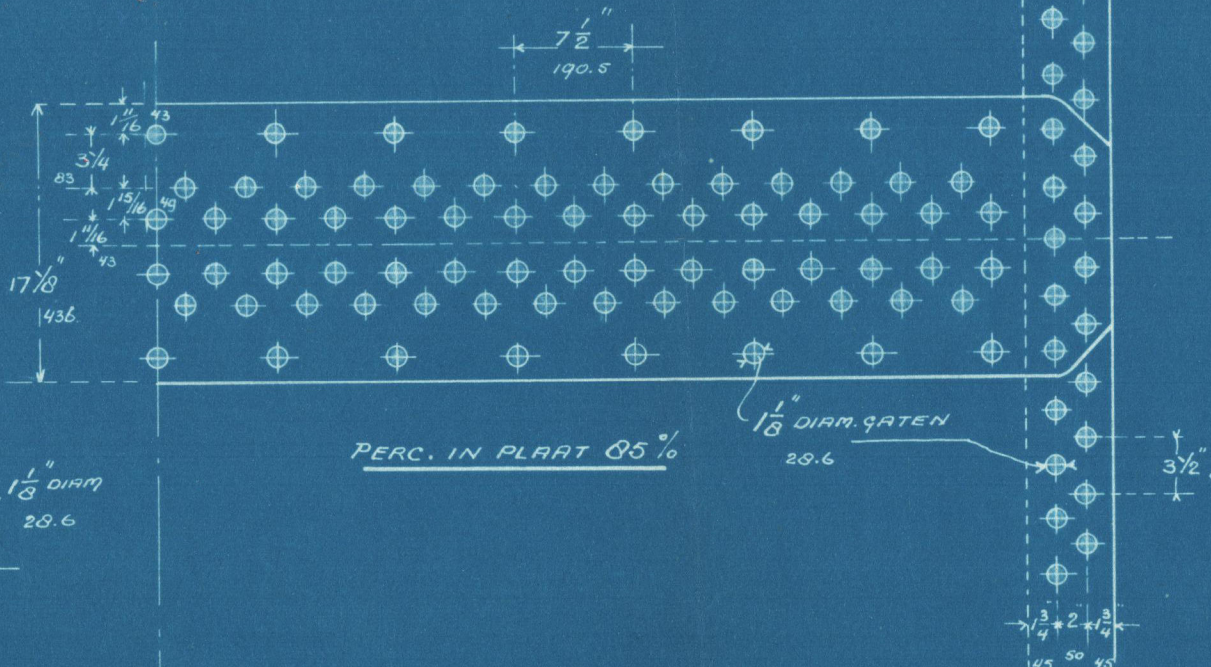
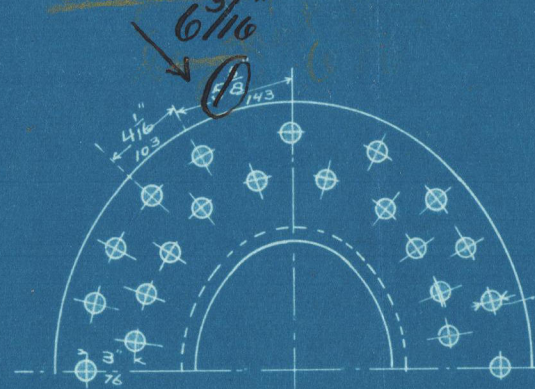
VLAMKASTEN 158 "

VOURGANGEN 88

TOTAAL 1446 VOET<sup>2</sup> = 134.14

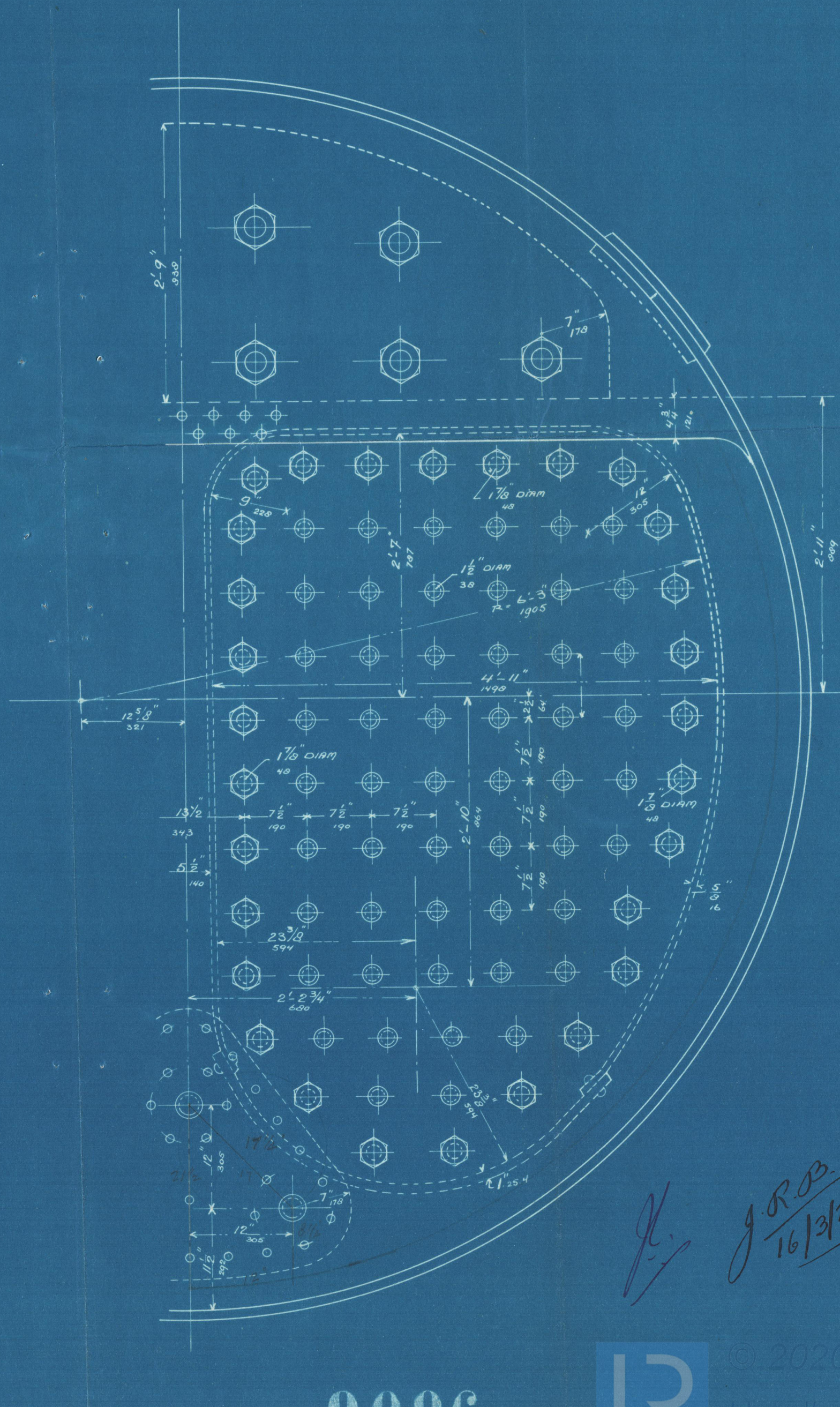
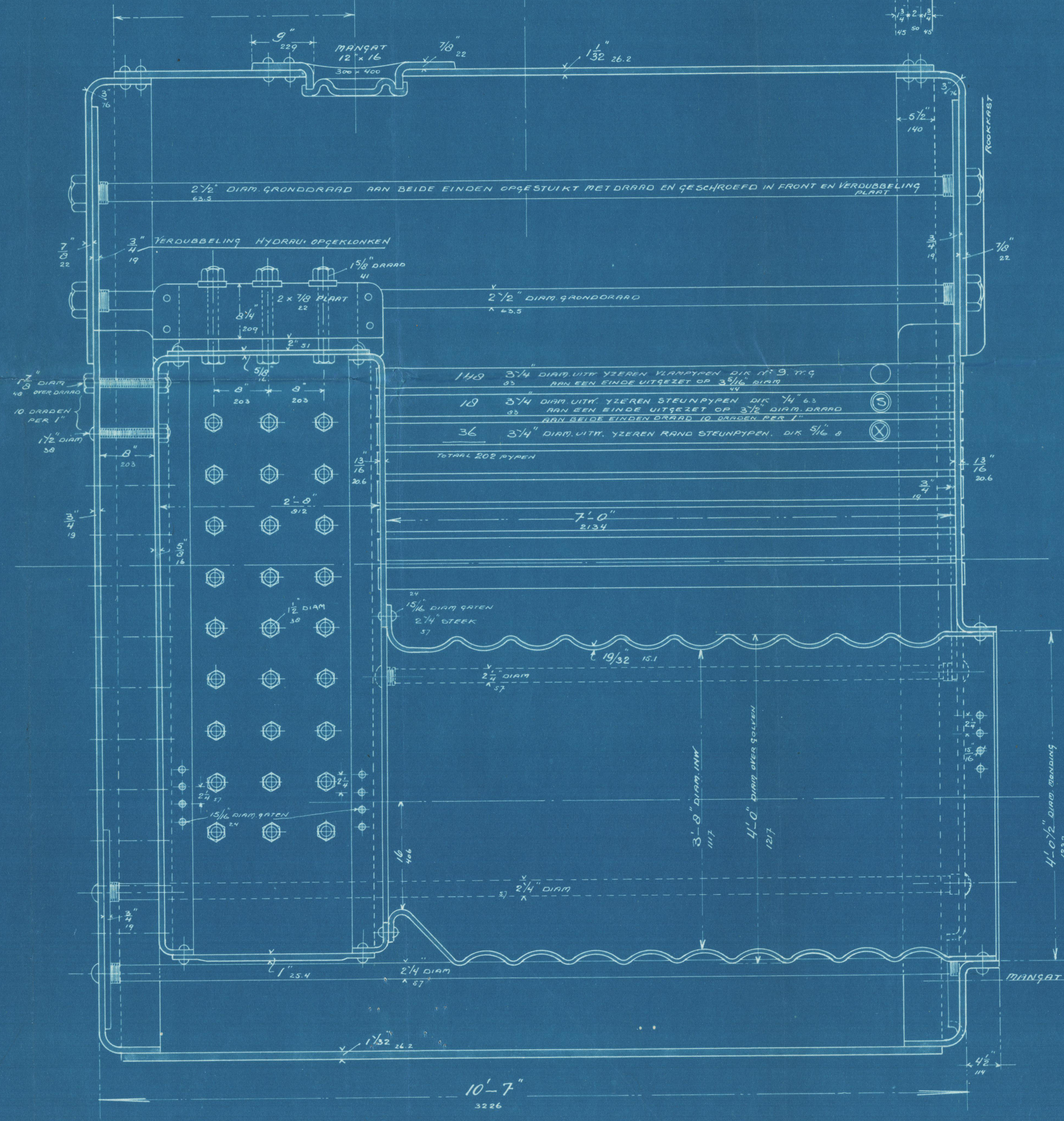


End pitches to be not less than 6 1/2"



## MATERIAAL TREKSTERKTE

ROMPEN STRIPPEN	28-32 TON	= 44.1-50.4 KG PER CM <sup>2</sup>
FRONTEN	26-30 "	= 41-47.3 "
VLAMKASTEN	26-30 "	= 41-47.3 "
VOURGANGEN	26-30 "	= 41-47.3 "
ANKERBOUTEN	28-32 "	= 44.1-50.4 "
STEKBOUTEN	26-30 "	= 41-47.3 "
KLINRNAGELS	24 "	= 37.8 "



9096



Memor. from Mr. De Schilde's  
Bosten N<sup>o</sup> 966. 967  
intended to be fitted in  
the  $\frac{2}{3}$  Noordholland  
N<sup>o</sup> 28405 in RB

London  
Office  
Copy



© 2020

Lloyd's Register  
Foundation

W428-0080