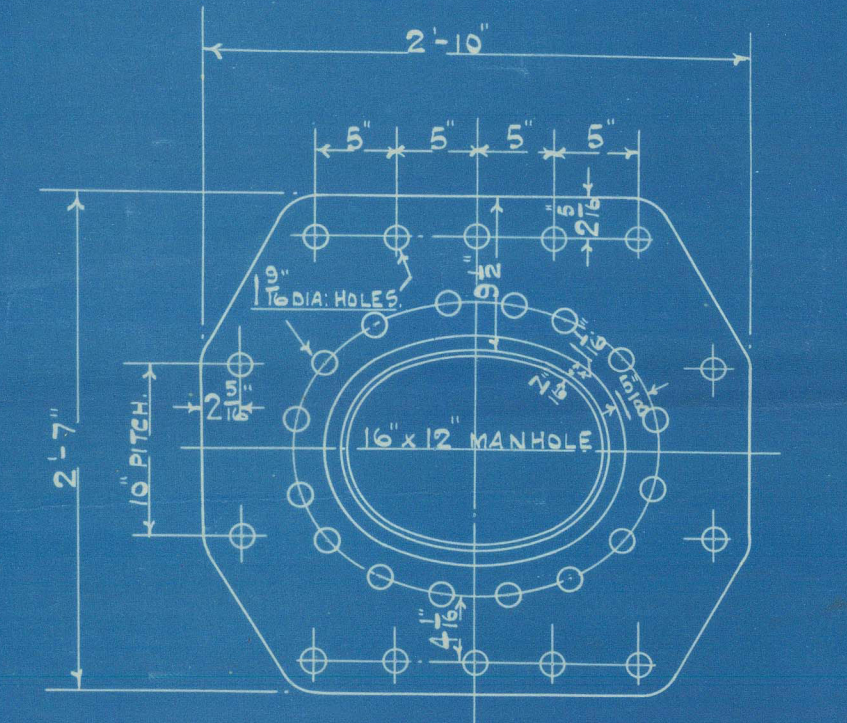
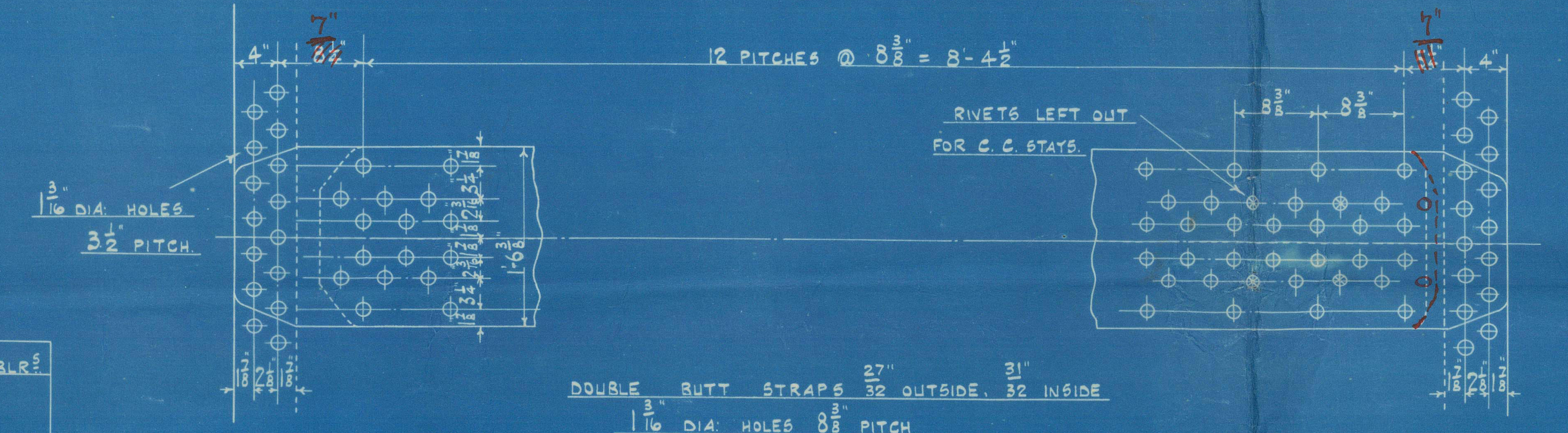


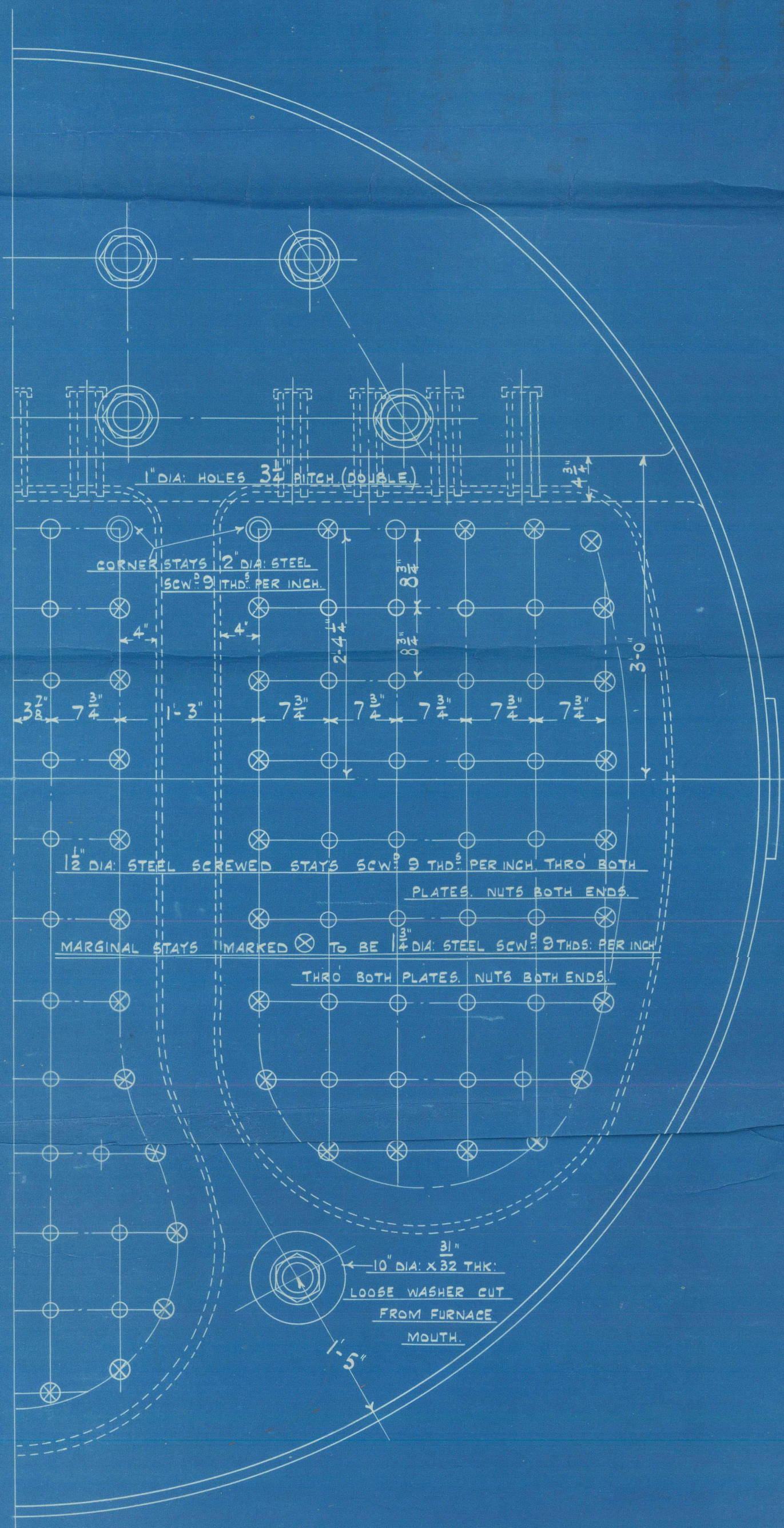
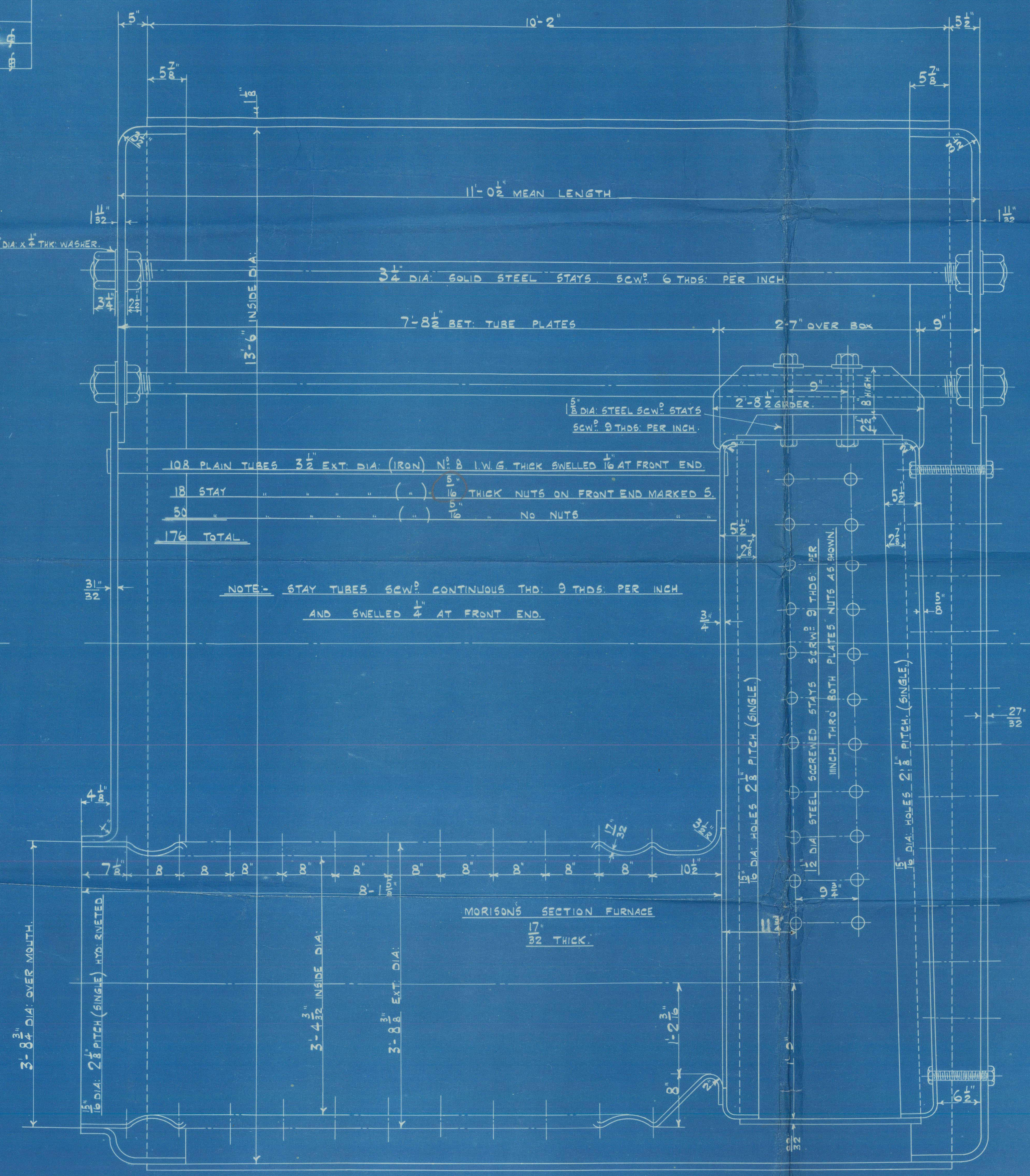
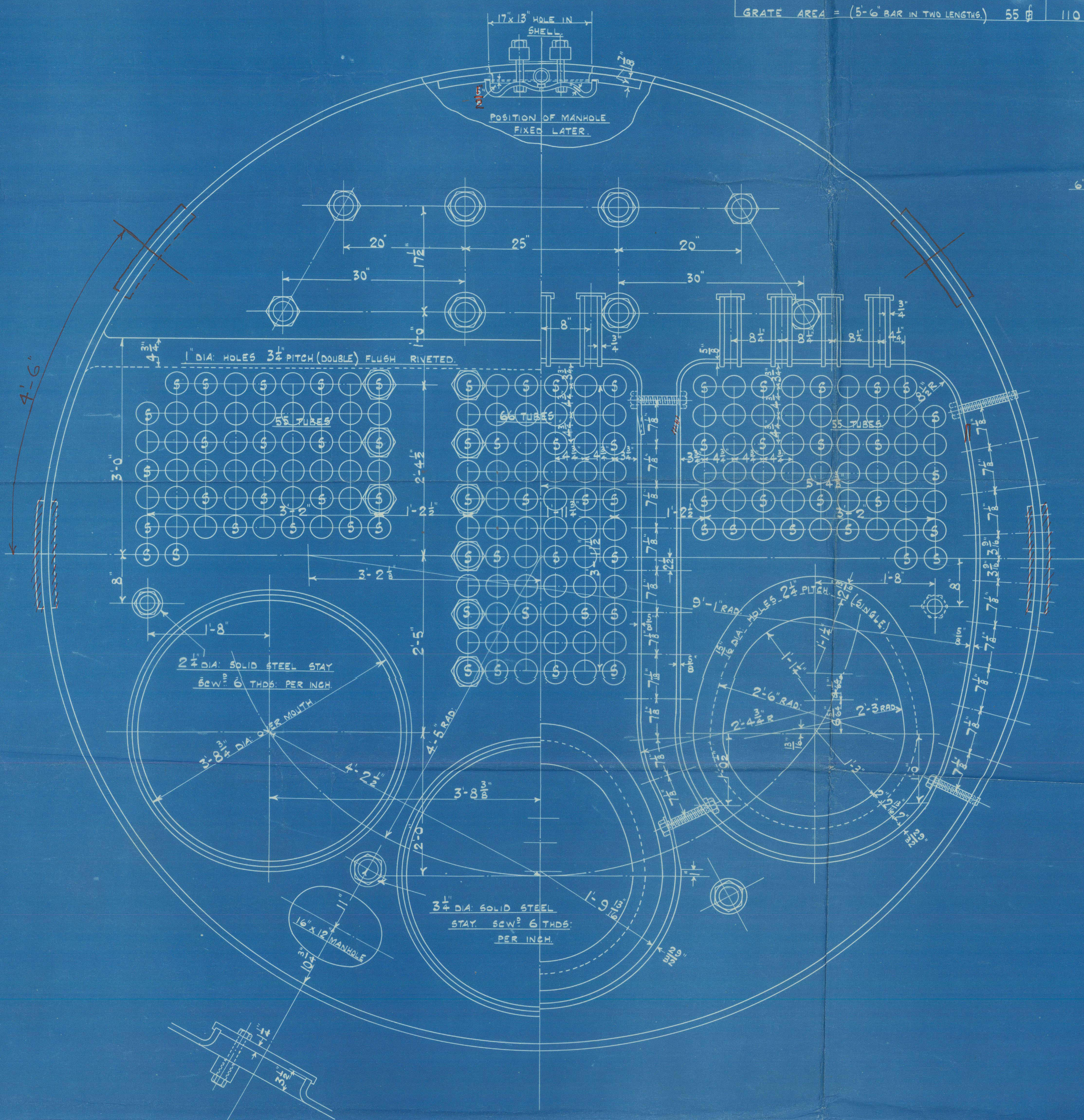
7/5/24



LIST OF MATERIAL		
SHELL PLATES	28-32 TONS	
BUTT STRAPS		
COMPENSATING PLATE		
RIBS		
LONGIT. STAYS	24-30	
STAY		
END PLATES		
ALL PLATING PLATES		
FURNACES		
TWO BLRS.		
HEATING SURFACE TUBES	=	1243
FURNACES	=	155
SIDES	=	125
BACKS	=	68
SK. TUBE PLATE	=	40
FRONT	=	30
TOTAL	=	1661
GRATE AREA = (5'-6" BAR IN TWO LENGTHS)		55 @ 110



DOUBLE BUTT STRAPS 3/4" OUTSIDE, 3/4" INSIDE
1/2" DIA. HOLES 3/4" PITCH
ALL HOLES DRILLED IN PLACE
TENSILE STRENGTH OF SHELL & BUTT STRAPS 28-32 TONS
TO PASS LLOYD'S SURVEY FOR A WORKING PRESSURE OF 180 LBS PER SQ. INCH



MAIN BOILERS. 2 OFF.

SCALE: 1" = ONE FOOT

DRAWING NO. 1

ORDER NO. 8814



Messrs R & W.
Hawthorn Leslie & Co Ltd

Amended plans of
boilers. No 8814.

W.P. 180 lbs per sq in.

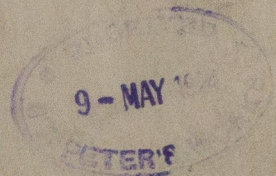
Shields Engineering & Dry Docking
Co. Contract No 377.

Hawthorn Leslie.

vessel No 535.

{ Lloyd's Test
No 9841
320 lbs
W.P. 180
GM 6/8/24 }

S.S. Middlesbrough
Newcastle



S.S. MIDDLESBRO.
NEWCASTLE ON TYNE.

Report No. ~~7842~~

S.S. MIDDLESBRO.

NEWCASTLE ON TYNE.

Report No. 7842.

RETAIN

W422-0061



© 2021

Lloyd's Register
Foundation