

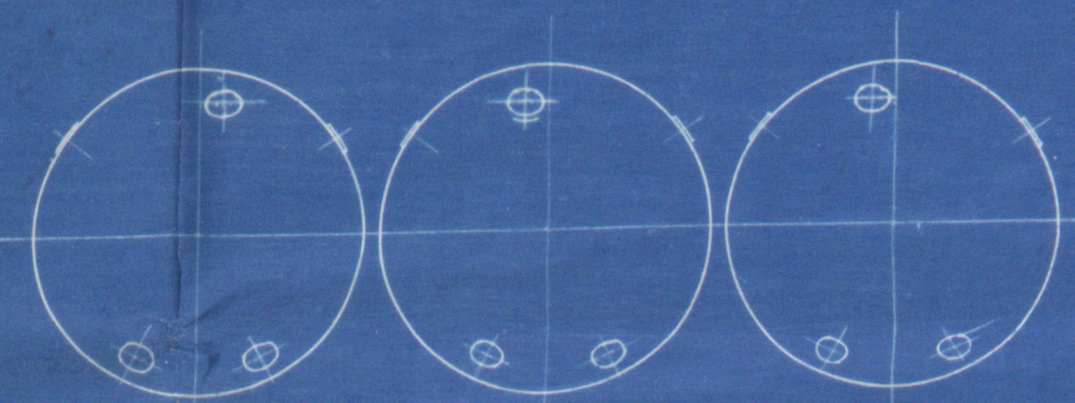
NORTHUMBERLAND ENGINE WORKS

TRACING 565

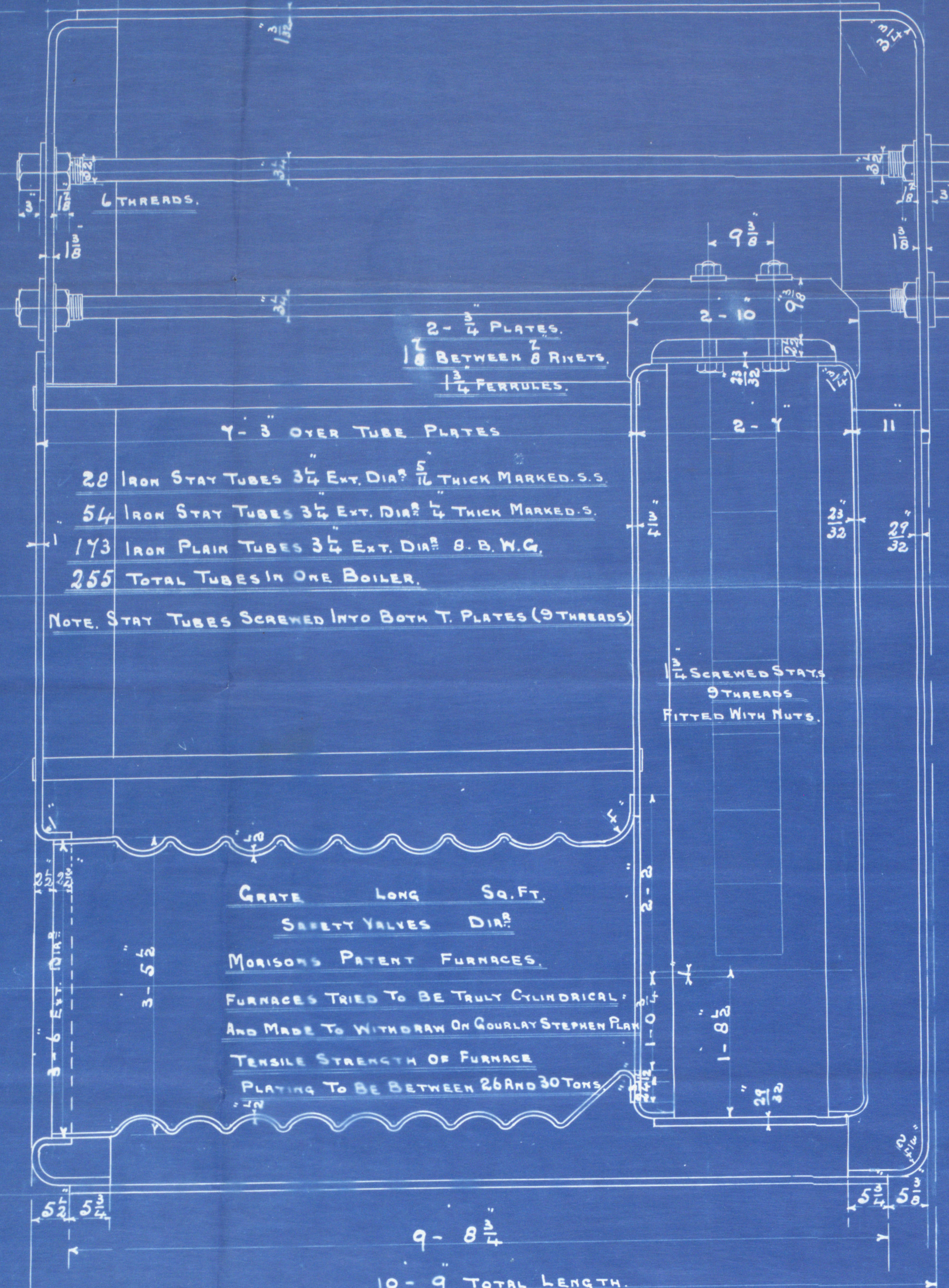
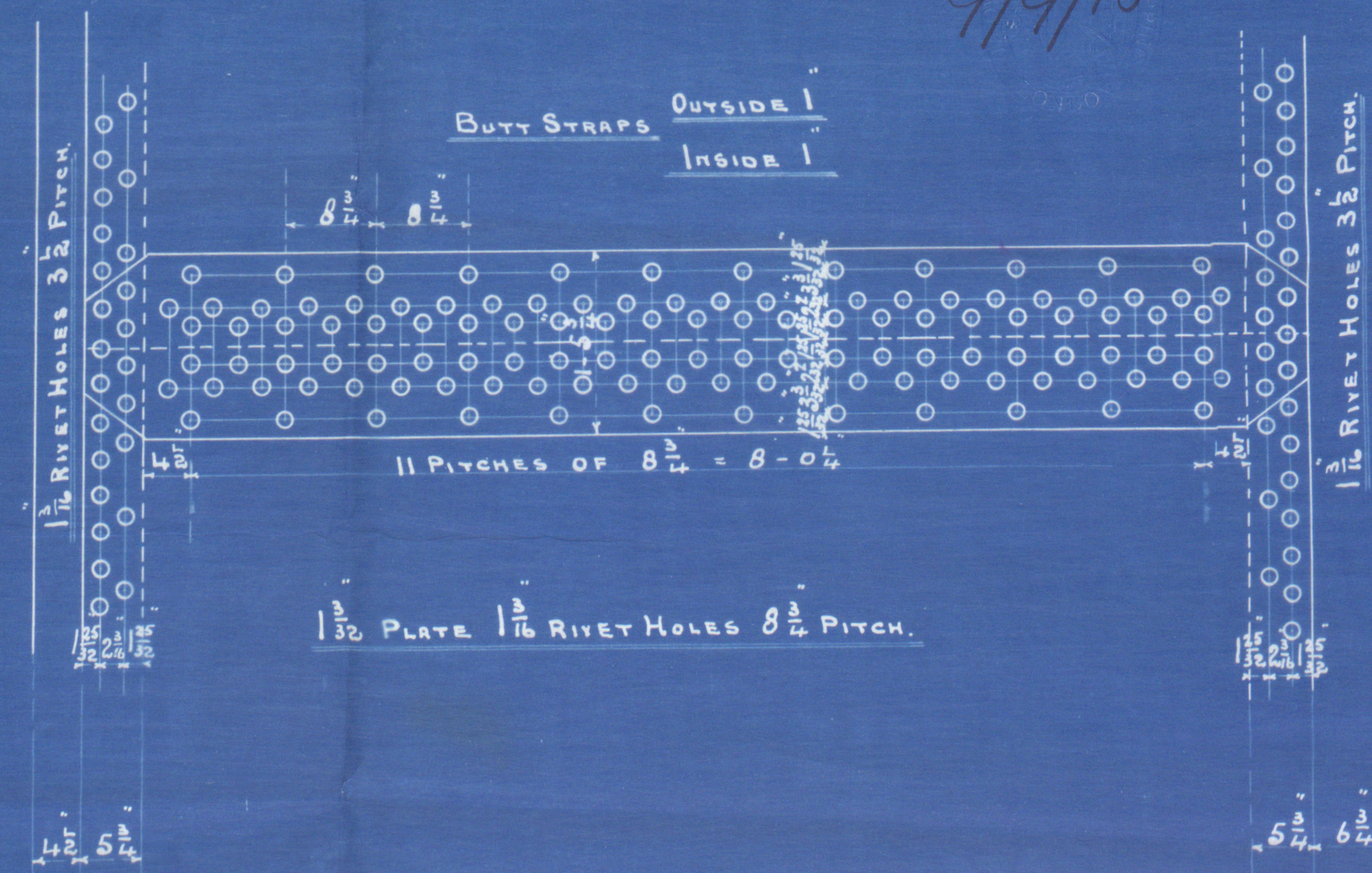
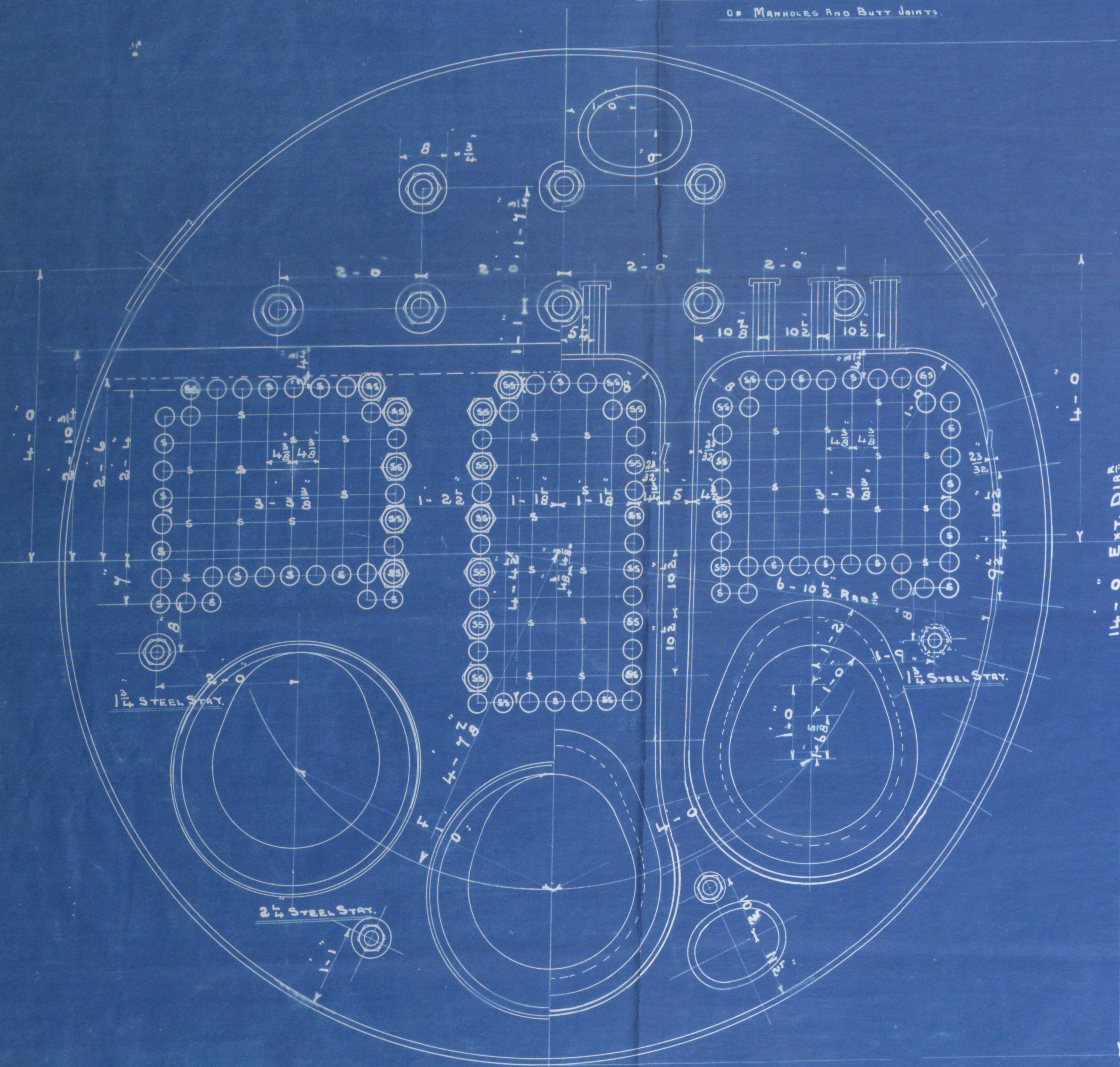
SCHEDULE L.

STEAM BOILER.

SCALE 1 INCH = ONE FOOT.



VIEW LOOKING ON BACK OF BOILERS SHOWING POSITION OF MANHOLES AND BUTT JOINTS.



SURVEY. TO LLOYDS AND OWNERS APPROVAL

HEATING SURFACE ON TUBES = 1574 SQ. FT.

ELSEWHERE = 426 SQ. FT.

TOTAL = 2000 SQ. FT. PER BOILER.

STEAM SPACE = CUB. FT.

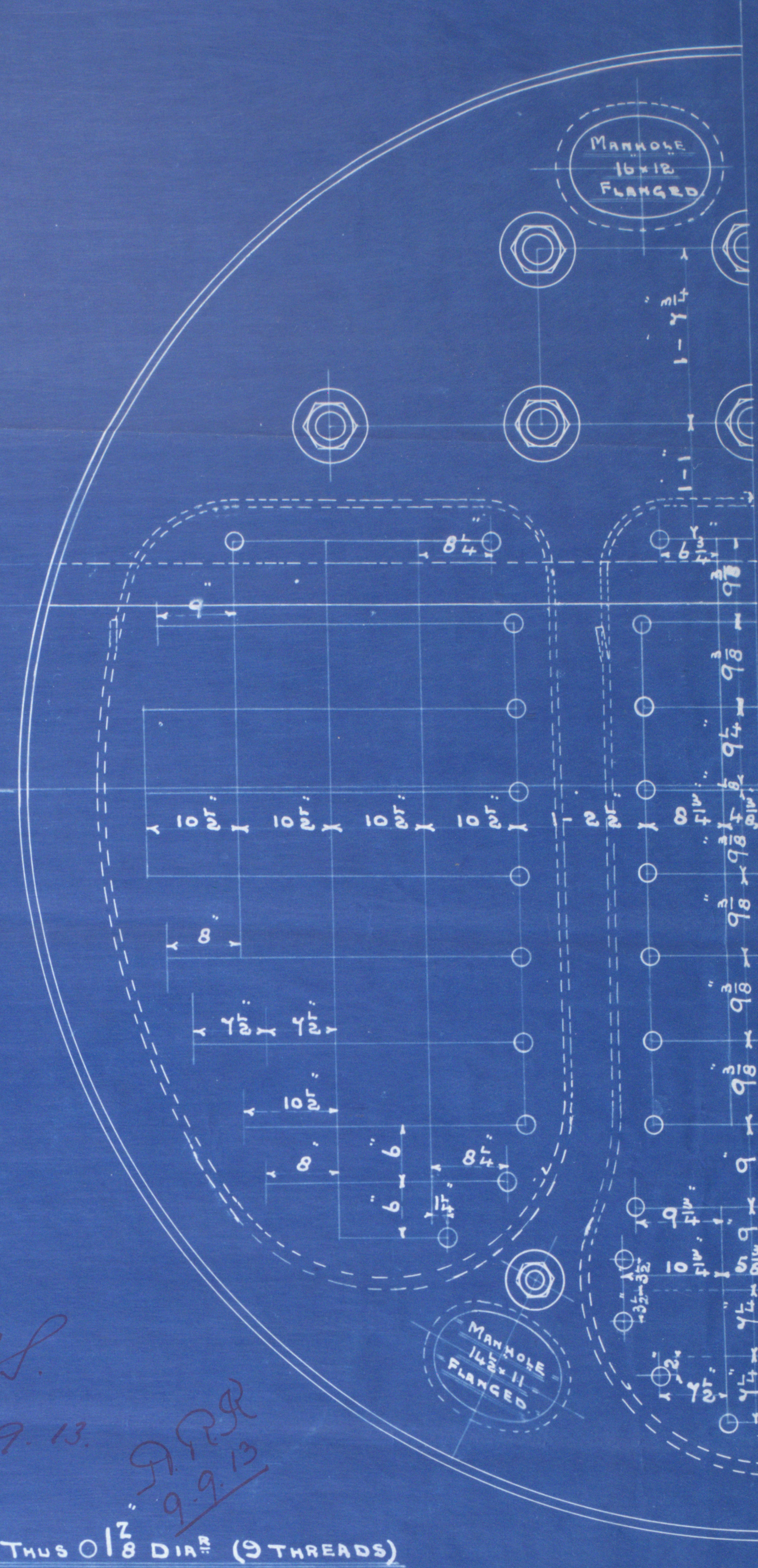
WORKING PRESSURE 180 LBS.

TEST PRESSURE = 360

NOTE. ALL PLATES STAYS 9/8 TO BE OF STEEL SMOKE TUBES OF IRON.

TENSILE STRENGTH OF SHELL PLATING TO BE NOT LESS THAN 28 3/4 TONS PER SQ. INCH.

ALL HOLES DRILLED IN PLACE AFTER PLATES ARE BENT.



STAYS MARKED THUS 0 1/2 DIA. (9 THREADS)

ALL OTHERS 1 1/4 DIA. (9 THREADS)

NOTE. ALL SCREW STAYS SCREWED INTO PLATE AND FITTED WITH NUTS.

FOR POSITION OF MANHOLES SEE SKETCH.

3 THUS.

CONTRACT 2136

8852

5100-174M
Lloyd's Register
Foundation

N. E. M. E. Co., LIMITED, WALLSEND.

ENCLOSURE

FOR

Messrs.

Lloyds

W421-0095' 2/2



© 2019

Lloyd's Register
Foundation

RETAIN

A. E. Marine
Boiler 2136
for
Nottingham boilers S.B. 218
Pressure 180 lbs
Newcastle 8/9/13



RETAIN

S.S. "ELFLAND"

NEWCASTLE-ON-TYNE.

Report No. 66055.

W421 - 0095



© 2019

Lloyd's Register
Foundation