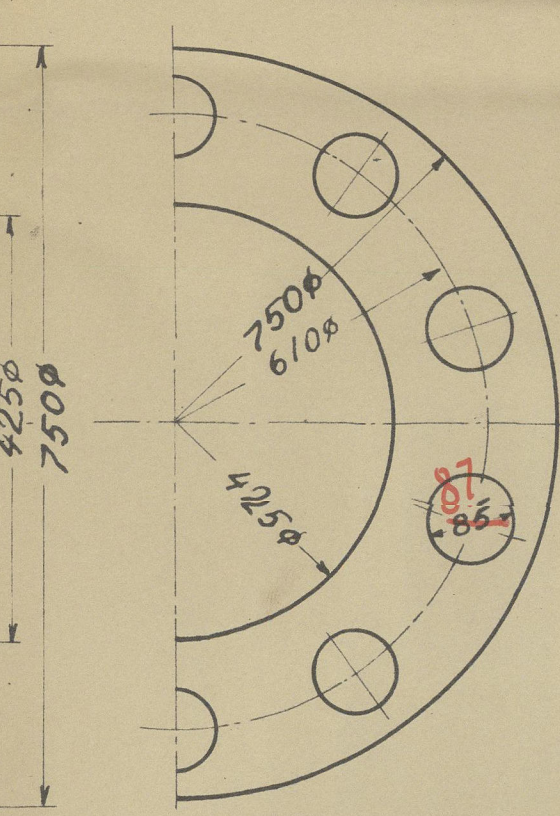
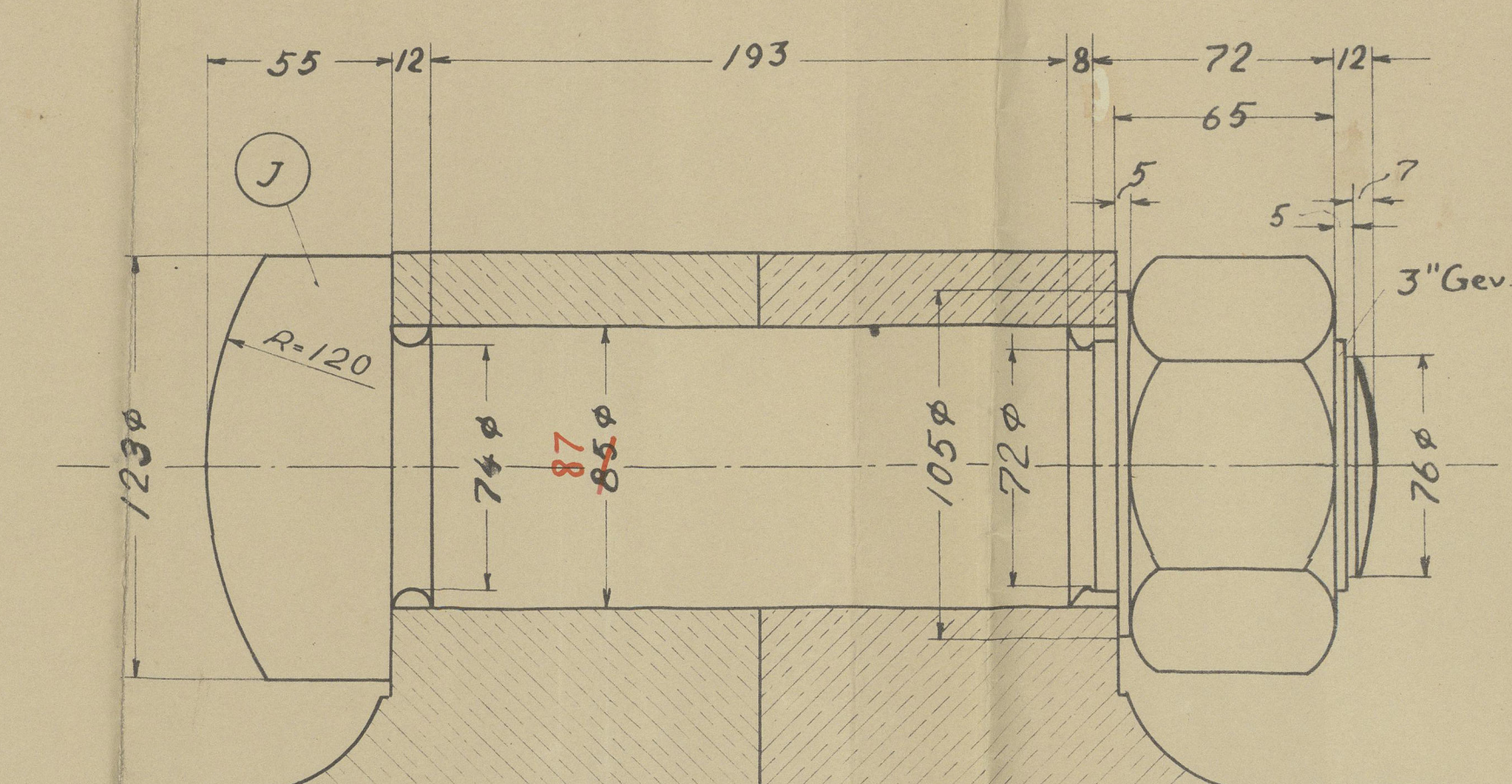
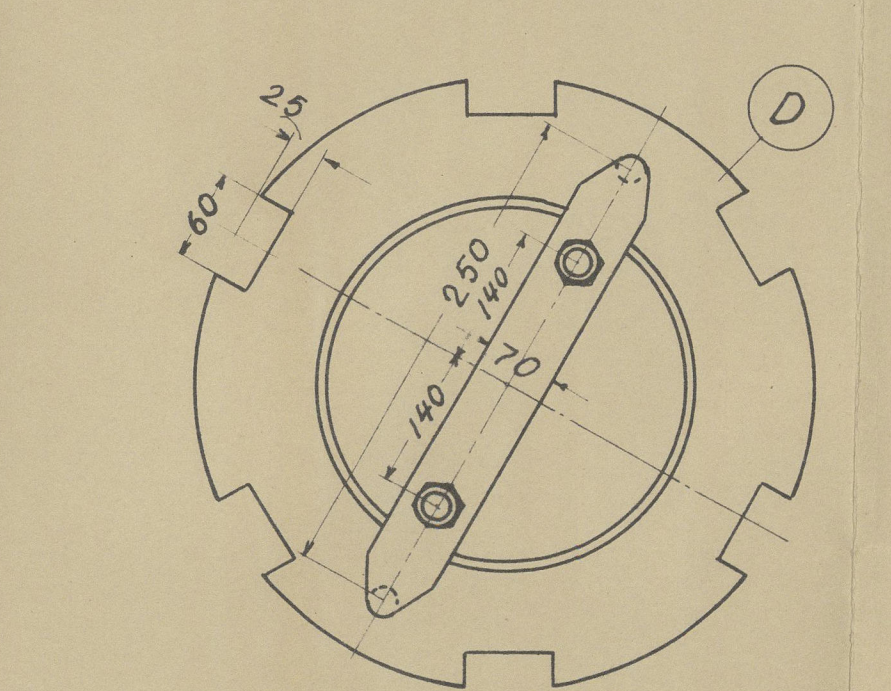
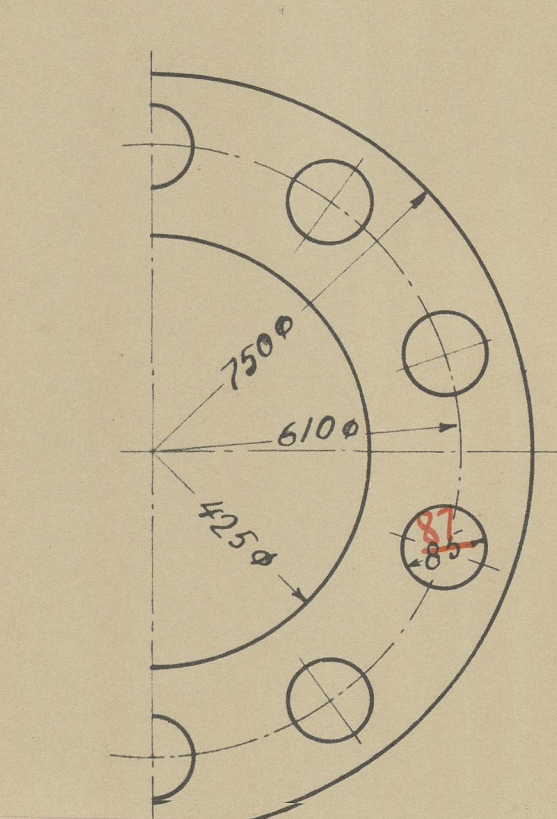


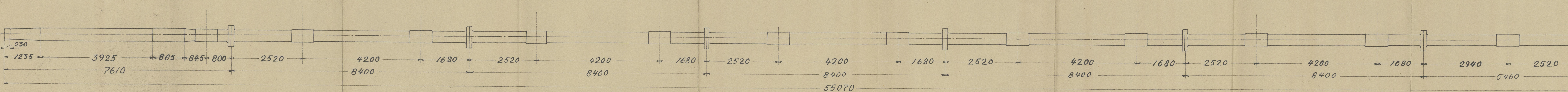
10 Stk ⁸⁷85 mm Huller for Pasbolte
Hullerne bores 82 mm for
Sammenrivning.



Mrk	Antal	Afsnit betegnelse	Materiale	Vægt _{kg}	Bemærkning
A	1	Skrueaksel	Sm Staal		
B	5	Mellemaksel	"		
C	1	"	"		
D	1	Skrueakse/motrik	B1 Staal		
E	1	Foring	Bronze		
F	1	Kile	Staal		
G	1	Sikring	B1 Staal		
H	2	1" Skruer	"		
J	70	85mm Pasbolten Motrik	Sm. Staal		
K					



Hovedmaskiner		Main Engines
1 Stk 6 Cyl 2 Tails Dobbeltvirkende	Diesel Motor	1-6 cyl 2 Cycle Double Acting
Cylinder Diameter	620 mm	Cylinder-Diameter
Slaglængde	1400 mm	Stroke
Omdr. pr. Minut	105	Revolutions pr. Minute
A.H.K.	7000	B.H.P.
Swingmoment pr. Balancevægle	64000 kgm ²	G ⁰ Balance Weights
" " Tørnehjul	5000 "	G ⁰ Turning Wheel
Jalt Swingmoment	69400 "	Total G ⁰
Maks. Tryk i Cylinder	49 kg/cm ²	Max Pressure in Cylinder
Skruer Diameter	5485 mm	Propeller Diameter



W.G.F.
14/6/34.
W.G.F.

11634. 3. Lloyds.

Propeller & Tunnel Shafts
for single screw ✓

Cargo & Passenger Motorship
Yard No 62

being built by:

AKTIESELSKABET
NAKSKOV SKIBSVÆRFT

m/v. "Canada."

Gen. Report No. 9683.

RETAIN

W420 - 0061

RETAIN



© 2019

Lloyd's Register
Foundation