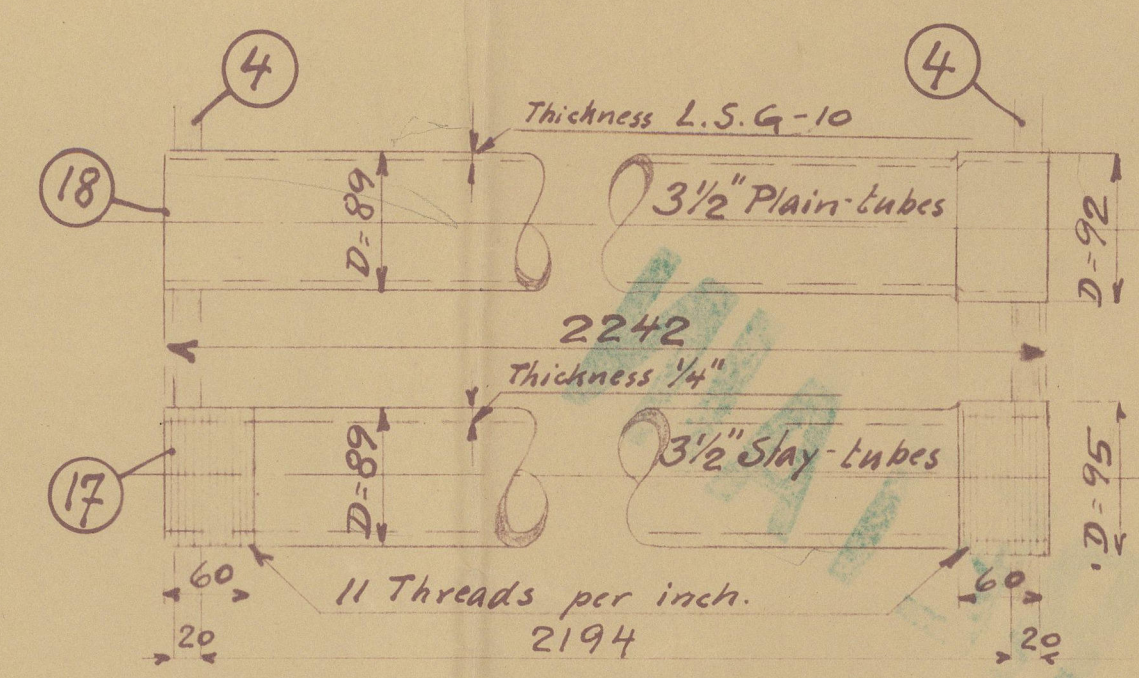
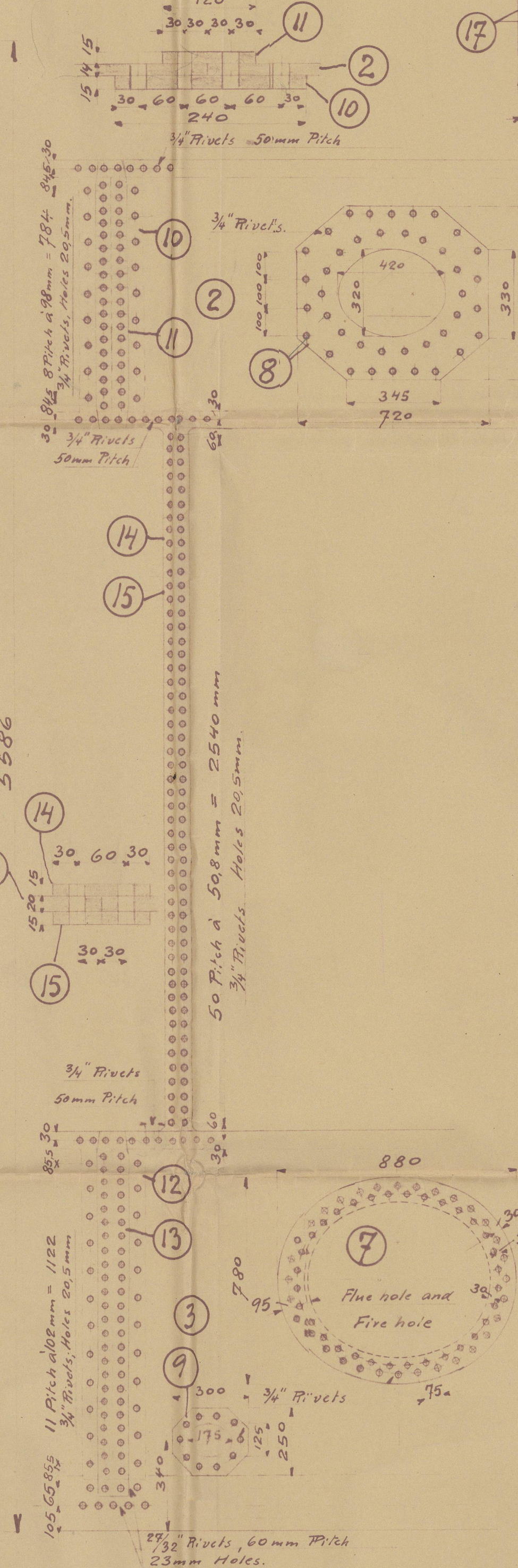
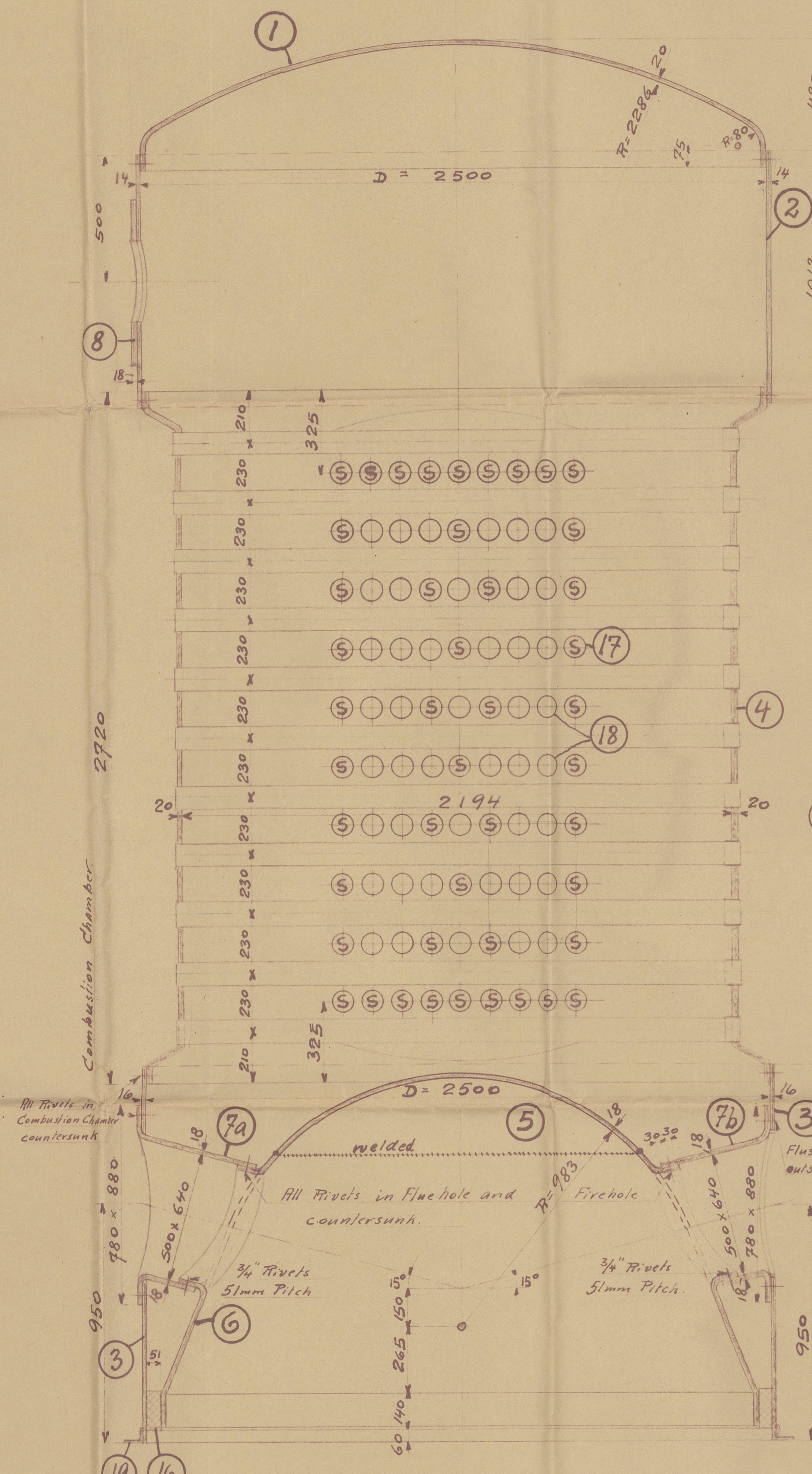
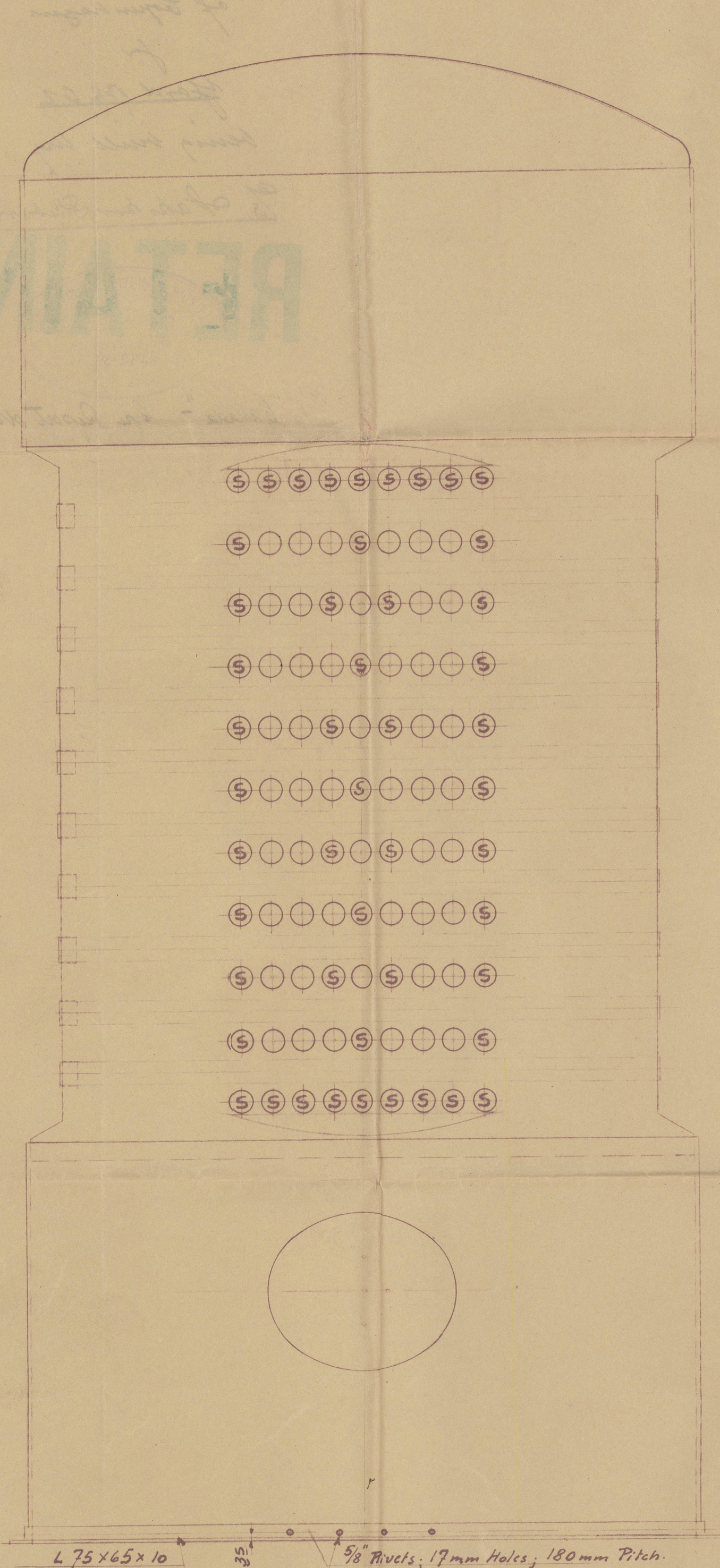


2-1-1935



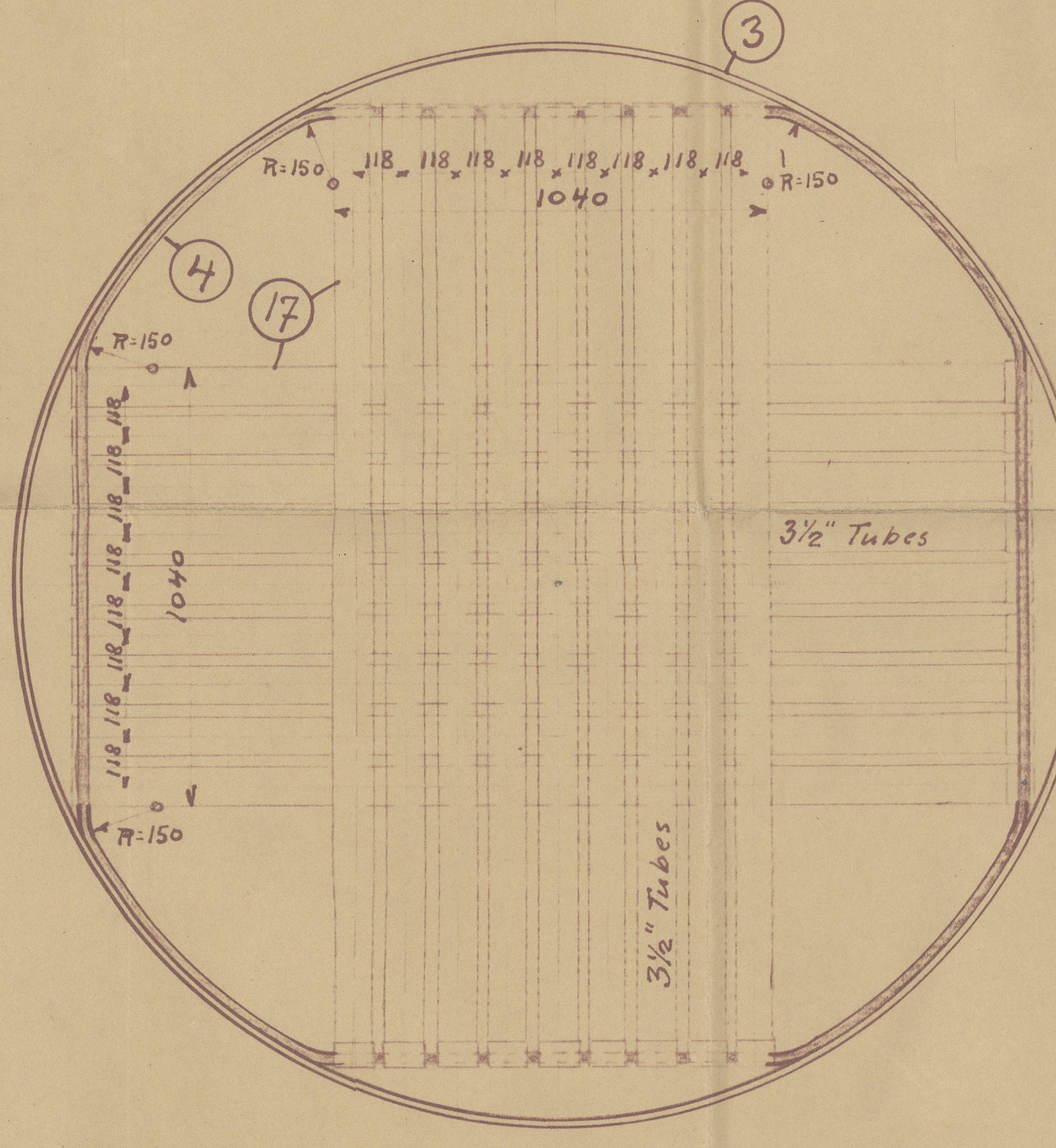
Lloyds.

Crown	15.26. (25-1)	= 104Lb
Plate I	98-20.5	100 = 79%
II	100 (3.85-1.02) + 100 (23.052 - 7.0)	
Rivets	100 (23.052 - 1.12 (1.875))	= 97%
Shell	(17-2) 26.78	= 117Lb
Tubes Plate	230-95	100 = 59%
II	50.8-20.5	100 = 60%
Rivets	100 (23.052 - 1.875)	= 51%
Tubes Plate	(25-2) 26.51	= 109Lb
II	354 + 72 + 230 + 258 = 330mm = 13"	
II	38 (25-2)	= 120Lb
Furnace-crown	275 (23-1)	= 144Lb
Furnace-conical	Se Drawing	= 166Lb Approved
II	39905	= 116Lb 100Lb
Stiffening ring		= 106Lb

Heating Surface

For Oil-Burner	
Furnace	6.2m ²
Tube Plates	3.5m ²
Tubes	22.5m ² 31.2m ²
For Exhaust	
Tube Plates	8.4m ²
Tubes	93.6m ² 102.0m ²
Total	133.2m ²

Position of Mountings,
Firehole, Mudholes is not
fixed to day.



Boiler Mountings

No.	Dia.	Description	Remarks
1	90mm	Stop Valves	
2	40mm	Feed Checks	
1	40mm	Blow-off-Cock	
2	90mm	2 x 2 1/2" Safety-Valves	
2	3/4"	Water Gauges	
1	200mm	Pressure gauges	
1	1/2"	Fire cock	
1	3/4"	Safety-meter cock	
1	25mm	Scum Valves	

19	1	L-Ring	M.H. 5:11
18	3 1/2"	Plain-tubes	
17	3 1/2"	Stay-tubes	
16	1	Stiffening-ring	28-32 20%
15	1	But-strap	
14	1	---	
13	1	---	28-32 20%
12	1	---	
11	1	---	
10	1	But-strap	
9	4	Mudhole	
8	1	Manhole	
7b	2	Fire and Inspect-hole	24-30 23%
7a	1	Fluehole	
6	1	Furnace-conical	
5	1	Furnace-Crown	26-30 23%
4	1	Tube-Plate	26-30 23%
3	1	Shell	28-32 20%
2	1	Shell	28-32 20%
1	1	Crown	26-30 23%

Material to Lloyds - Rules.

Mark. No. Off. Description Matr. Tensile strength of least. Remarks.

Date	Ordre	Bestiller	Ad. Nores
6558	Nakshon Shikhs	Ordre (No 62)	1 Gang

22.12.34. 40953 1:15; 1:5
 Vertikal - Boiler
 System S.M. XH
 Diam: 2500mm. Height: 5586mm
 Working pressure: 7 Atm
 Hydraulic test pressure 14 Atm.

W420-0060

Torkey Boiler ✓

being constructed by

Messrs Smith, Mygind & Hultmann
of Copenhagen

for

Yard No 62

being built by

of Skarboer Skibsværft

M/v. "Canada" - Spec. Report No. 9683.