

CANADA

REPORT OF TOTAL LOSS, CASUALTY, &c.

No. 21693 in R. B. Wreck Book, p. 86/39

Date of writing this report 19th February 1940

Vessel's Name Steel M.S. "Canada"

of Copenhagen

Tons { Gross 11108
Net 6586

Built at Naaskov When 1935 8

Casualty notice sent to Owner 15/11/39 Owner's reply 26/1/40
8/2/40

Owner's Name A/S Det Ostasiatke Kompagni

Address Rolbergsgade 2-4, Copenhagen, K.

Case previously before Date
Classing Committee. Last Minute

Particulars of Classification.

7100A1 71LNC CS 439
with freeboard 638
739 DBS 738
SS No 139 71Llogde RAK
2.39 etc
OIL ENGINES TS 838CL

Date of Casualty 3rd November 1939

Précis of particulars of Casualty This vessel is reported to have been badly damaged by an explosion in the North Sea on the 3rd November 1939. She was taken in tow but subsequently sank in shallow water.

In reply to the Special Casualty notice the Owners state that they are still considering the case and that when a decision has been arrived at they will duly advise this Office.

(It may be stated that four vessels have been lost through striking the wreck of the "CANADA", and one of them, the "GEORGIOS", is reported to be interlocked.

A Press photograph of the "CANADA" is attached to the back of this report).

----- 18th April, 1940.

No reply has been received to the letter addressed to the Copenhagen Surveyors on the 28th ultimo regarding this case.

In reply to enquiry, Lloyd's state that this vessel is insured with the Clubs, in which case no settlement is made until 6 months from the date of casualty.

It may be stated that this vessel's name is included in the list of War Losses periodically published in Lloyd's List.

SOURCE OF INFORMATION.

DANISH MOTORSHIP.

The Danish motorship "Canada", 11,108 tons gross, sank on Saturday night, 3rd November 1939, after an explosion in the forepart, believed to have been caused by a torpedo. Three ships' boats with 40 of the crew of 54 on board left the vessel, and a lifeboat put out from the shore and stood by.

The "Canada", which has passenger accommodation, was built in 1935 by the Naaskov Skibs A. S. and was owned by A. S. Det Ostasiatke Kompagni.

SUNK WHILE IN TOW

The Danish ship "Canada", of 11,000 tons, sank on Saturday when being towed by tugs. The ship was severely damaged on Friday night by an explosion in the forepart, believed to have been caused by a torpedo. Three ships' boats with 40 of the crew of 54 on board left the vessel, and a lifeboat put out from the shore and stood by.

The "Canada" dropped anchor and when the tugs arrived they took her in tow, although she was badly holed and her decks were awash. Later, however, the "Canada" sank, and the remainder of the crew were taken off by the lifeboat. It was learned last night that the occupants of one of the "Canada's" boats had been taken on board a trawler. Vessels continued to search for the other boats.

111 Escape After Explosion

Fifty-one passengers, including five women, together with the crew of 60 escaped uninjured from the Danish steamer "Canada" (11,000 tons), which sank in the North Sea on Saturday after an explosion.

There was no immediate danger of the vessel's foundering, but the captain ordered away three boats with the passengers and some of the crew. The "Canada" and 18 men remained on board in the hope of being picked up by the ship.

The "Canada" sank as she was being towed to East Coast ports tried to be picked up by a lifeboat. The other members of the crew were picked up by a Norwegian ship.

WRECKED "CANADA" CAUSES FOUR OTHER LOSSES

Heavy Calls on Lifeboat's Crew

The Danish motorship "Canada", which was sunk by mine off the East Coast on Nov. 4, has been the cause of the loss of four other ships. She sank in shallow water and was not completely submerged, but lay apparently in the direct line of shipping.

Suggested Record

Date of Committee

Committee's Minute

TUE. 20 FEB 1940

SUNK - WAR LOSS 11/39

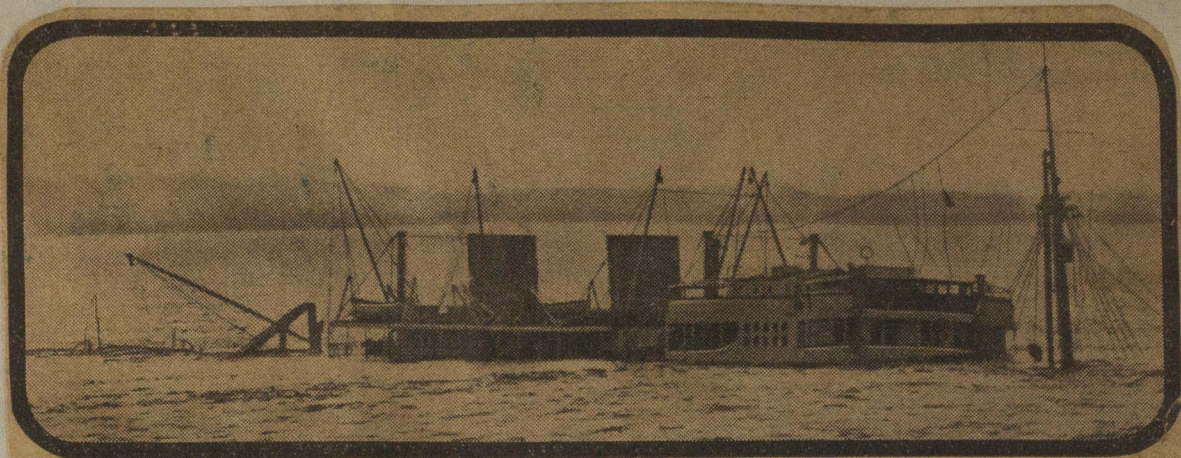
FRI. 19 APR 1940

© 2019

W B No 162
SECTION 3
Lloyd's Register
Foundation

W420-0001

Us now



"Ahead to the east we saw the upper deckworks of an 11,000-ton motor-ship. . . . From her foremast still flew damply the signal, 'Am in need of assistance.' She was the Danish ship Canada, sunk without loss of life by a mysterious explosion in one of her holds."