

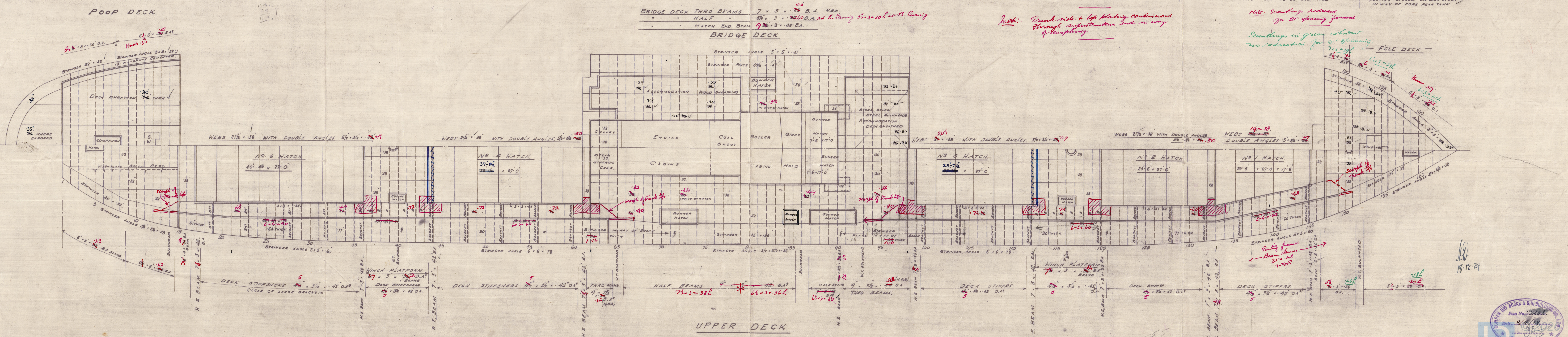
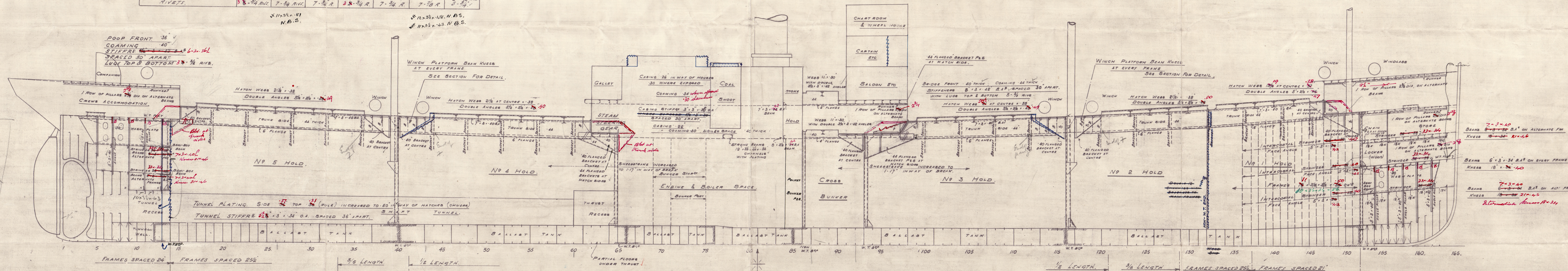
ITEM.	Nº 14 W.T.	Nº 40 W.T.	Nº 65 W.T.	Nº 86 W.T.	Nº 93 W.T.	Nº 116 W.T.	Nº 152 W.T.
BULKHEAD FRAMES.	3.3.36	3.3.36	3.3.36	3.3.36	3.3.36	3.3.36	3.3.36
TANK TOP ANGLE.	—	—	—	—	—	—	—
DECK ANGLE.	3.3.36	3.3.36	3.3.36	3.3.36	3.3.36	3.3.36	3.3.36
PLATING EX COAMING.	30.34	26.34	26.34	26.34	26.34	26.34	26.34
COAMING.	30.34	26.34	26.34	26.34	26.34	26.34	26.34
STIFFENERS.	24.30	24.30	24.30	24.30	24.30	24.30	24.30
SPACING.	24.30	24.30	24.30	24.30	24.30	24.30	24.30
TOP & BOTTOM CONNECTIONS.	24.30	24.30	24.30	24.30	24.30	24.30	24.30
RIVETS.	3.3.36	3.3.36	3.3.36	3.3.36	3.3.36	3.3.36	3.3.36

# — PROFILE & DECK PLANS. —

— S. S. N° 248. —

DIMENSIONS — 338' 0" B.P. x 48' 0" BREADTH EXT. 25' 6" DEPTH M.D.

SCALE 1/8" = 1 FOOT.





(2)

Cowper. S. B. Co. L<sup>d</sup>

No. 248.

Profile & decks.

---

S.S. "HOLMSIDE".  
NEWCASTLE ON TYNE.

Report No. 86043

---

W42-0065



© 2020

Lloyd's Register  
Foundation