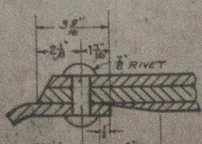


W42-0024

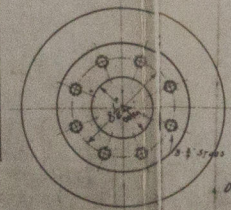
11-2-18 A.S.S. 17-1-23
11-2-18 A.S.S. 17-1-23
11-2-18 A.S.S. 17-1-23
11-2-18 A.S.S. 17-1-23
11-2-18 A.S.S. 17-1-23

BILL OF MATERIAL FOR ONE DRUM SHELL - COMPLETE -

MARK	NO REQD	DESCRIPTION	DRAWING NO.
A	1	DRUM SHELL 134" x 136" x 1/2" THICK	NY 171-123 I
B	1	DRUM HEAD PLATE 52" DIA. 1/2" THICK	
C	1	PLATE 42" DIA. 1/2" THICK WITH MANHOLE OPENING	
D	1	BUTTSTRAP 20" x 130" x 1/2" THICK	
E	1	" 14" x 136" x 1/2" "	
F	1	REINFORCING BAR 2" x 1/2"	
G	1	MANHOLE COVER COMPLETE	NY 182-54
H	2	4" PRESSED STEEL STUDDED PADS	NY 183-13-C
I	2	" "	NY 184-4-B
J	1	" "	NY 184-12-B
K	4	" "	NY 183-11-A
L	2	" "	NY 183-12
N	2	SHAY BRACE LUGS	NY 182-70



SECTION A-A.



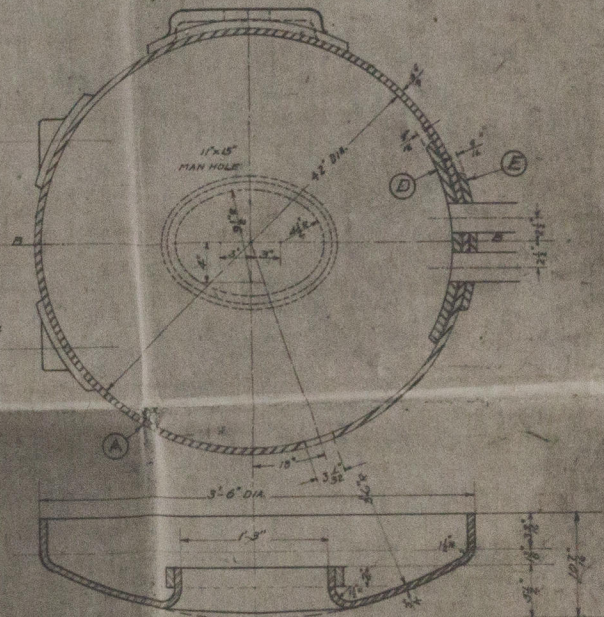
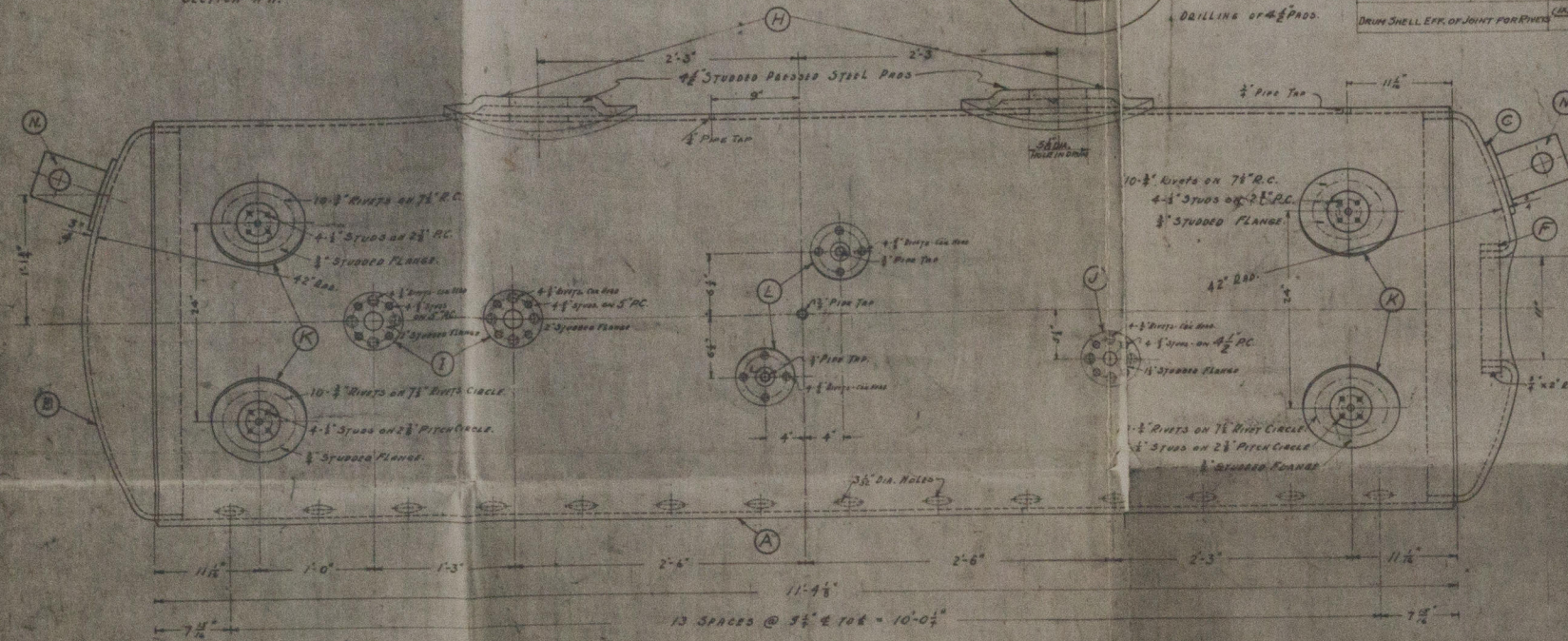
DRILLING OF 4" PADS.

NAME	SIZE	U.S. RULES	MAKING POUNDS
DRUM SHELL	134" x 136" x 1/2"	$[(775 - (2 \times 134 + 136)) \times 112 \times 28] \div 16$	230.6
BUTT STRAP	20" x 130" x 1/2"	$[(20 \times 130) \times 28] \div 16$	23.0
DRUM SHELL	134" x 136" x 1/2"	$[(775 - (2 \times 134 + 136)) \times 112 \times 28] \div 16$	230.6
DRUM SHELL	134" x 136" x 1/2"	$[(775 - (2 \times 134 + 136)) \times 112 \times 28] \div 16$	230.6
DRUM SHELL	134" x 136" x 1/2"	$[(775 - (2 \times 134 + 136)) \times 112 \times 28] \div 16$	230.6
DRUM SHELL	134" x 136" x 1/2"	$[(775 - (2 \times 134 + 136)) \times 112 \times 28] \div 16$	230.6
DRUM SHELL	134" x 136" x 1/2"	$[(775 - (2 \times 134 + 136)) \times 112 \times 28] \div 16$	230.6
DRUM SHELL	134" x 136" x 1/2"	$[(775 - (2 \times 134 + 136)) \times 112 \times 28] \div 16$	230.6
DRUM SHELL	134" x 136" x 1/2"	$[(775 - (2 \times 134 + 136)) \times 112 \times 28] \div 16$	230.6
DRUM SHELL	134" x 136" x 1/2"	$[(775 - (2 \times 134 + 136)) \times 112 \times 28] \div 16$	230.6

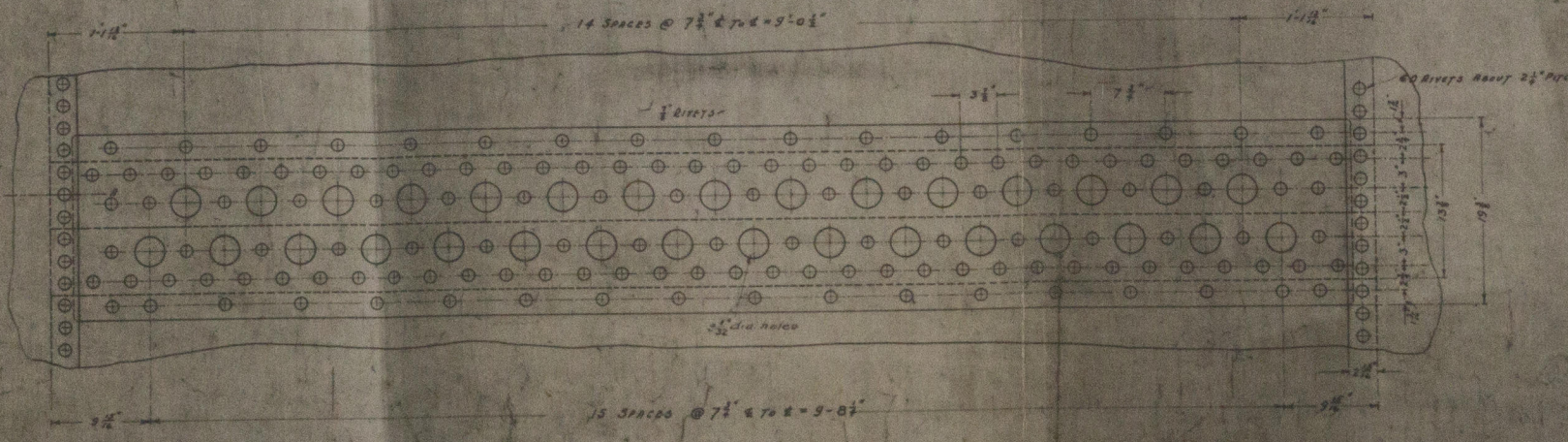
NAME	SIZE	AMERICAN BOARD OF SHIPPING	MAKING POUNDS
DRUM SHELL	134" x 136" x 1/2"	$[(775 - (2 \times 134 + 136)) \times 112 \times 28] \div 16$	230.6
DRUM SHELL	134" x 136" x 1/2"	$[(775 - (2 \times 134 + 136)) \times 112 \times 28] \div 16$	230.6
DRUM SHELL	134" x 136" x 1/2"	$[(775 - (2 \times 134 + 136)) \times 112 \times 28] \div 16$	230.6
DRUM SHELL	134" x 136" x 1/2"	$[(775 - (2 \times 134 + 136)) \times 112 \times 28] \div 16$	230.6
DRUM SHELL	134" x 136" x 1/2"	$[(775 - (2 \times 134 + 136)) \times 112 \times 28] \div 16$	230.6
DRUM SHELL	134" x 136" x 1/2"	$[(775 - (2 \times 134 + 136)) \times 112 \times 28] \div 16$	230.6
DRUM SHELL	134" x 136" x 1/2"	$[(775 - (2 \times 134 + 136)) \times 112 \times 28] \div 16$	230.6
DRUM SHELL	134" x 136" x 1/2"	$[(775 - (2 \times 134 + 136)) \times 112 \times 28] \div 16$	230.6
DRUM SHELL	134" x 136" x 1/2"	$[(775 - (2 \times 134 + 136)) \times 112 \times 28] \div 16$	230.6
DRUM SHELL	134" x 136" x 1/2"	$[(775 - (2 \times 134 + 136)) \times 112 \times 28] \div 16$	230.6

PERCENTAGES FOR PLATES AND RIVETS

ITEM	PERCENTAGE
DRUM AT BUTT STRAP JOINT	70.8%
DRUM AT CIRCULATING TUBE HOLES	66.9%
BUTT STRAPS - OUTER ROW	87.9%
BUTT STRAPS - 2ND ROW	48.4%
RIVETS - OUTER ROW	9.7%
RIVETS - 1ST & 2ND ROW	51.2%
DRUM HEAD - PLATES	40.8%
DRUM HEAD - RIVETS	33.2%
REGUL PITCH OF RIVETS IN CIRCULATING TUBE	2.37%



SECTION B-B.



"Guatemala" ex "VALIENTE" N.Y. 40290

USED FOR	CONTRACT NO.	NO. OF BOILERS	REMARKS
ERICKSON ENGINEERING CO.	98	30	3 Drums with 100 lbs. pressure
ATLANTIC CORPORATION	146-S.C.	30	10 Drums with 100 lbs. pressure
CAROLINA SHIPBUILDING CO.	220	30	ALL DRUMS AS SHOWN
UNION CONSTRUCTION CO.	222-S.C.	30	
DOULT & WILLIAMS SHIPBUILDING CO., INC.	304	24	

APPROVED

2020

POWER SPECIALTY CO.
111 BROADWAY NEW YORK

FOSTER MARINE BOILER
FOSTER DRUM DETAILS

J.S.H.

SCALE: 1/2" = 1'-0" THREE BY FOUR

DATE: 11-27-18

DRAWN BY: H.F.F.

CHECKED BY: H.F.F.

APPROVED BY: H.F.F.

DWG. NO. NY 171-123 I

SECTION B-B AND BILL OF MATERIAL ADDED - 11-18-18. H SIZE OF TUBE HOLES CHANGED FROM 3/4" TO 1/2" - 11-21-18. J SHAY BRACE LUGS ADDED - 11-26-18. K FUSIBLE PLUGS REMOVED - 11-31-18. L DESIGN & LOCATION OF WATER COLUMN PADS CHANGED FROM 21" TO 24" - 12-10-18. F TABLE AND 4" PIPE TAP IN DRUM ADDED - 1-6-19. M 1/2" DIA. TUBE PADS CHANGED FROM 4" TO 4 1/2" - 1-10-19. N 1/2" DIA. TUBE PADS ADDED ON FLANGES - 2-19-19. E DESIGN & LOCATION OF WATER COLUMN PADS CHANGED FROM 21" TO 24" - 3-10-19. F TABLE AND 4" PIPE TAP IN DRUM ADDED - 1-6-19. G 1/2" DIA. TUBE PADS CHANGED FROM 4" TO 4 1/2" - 1-10-19. H SIZE OF TUBE HOLES CHANGED FROM 3/4" TO 1/2" - 11-21-18. I SHAY BRACE LUGS ADDED - 11-26-18. J FUSIBLE PLUGS REMOVED - 11-31-18. K DESIGN & LOCATION OF WATER COLUMN PADS CHANGED FROM 21" TO 24" - 12-10-18. L DESIGN & LOCATION OF WATER COLUMN PADS CHANGED FROM 21" TO 24" - 12-10-18. M 1/2" DIA. TUBE PADS CHANGED FROM 4" TO 4 1/2" - 1-10-19. N 1/2" DIA. TUBE PADS ADDED ON FLANGES - 2-19-19.

W42-0024



© 2020

Lloyd's Register
Foundation