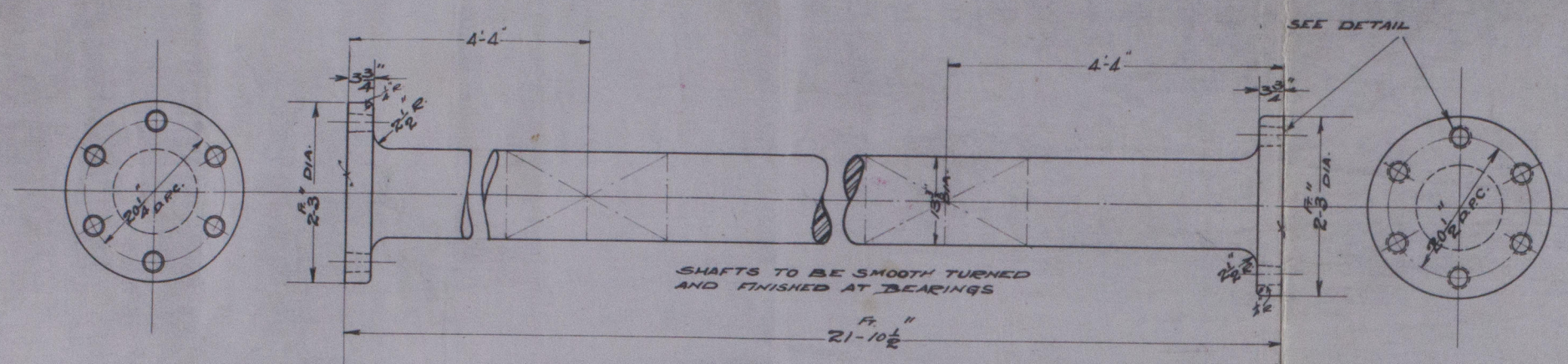


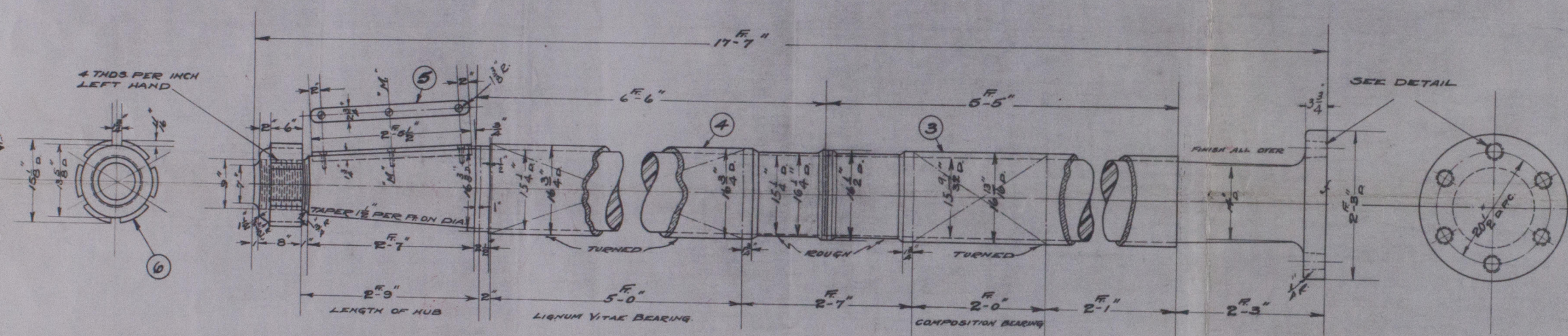
BILL OF MATERIAL.			
QUANTITIES FOR ONE COMPLETE SHIP			
NO.	QTY.	NAME	REMARKS
1	1	LINE SHAFT	STEEL
2	2	PROPELLER SHAFT	STEEL
3	1	SLEEVE	CONGR.
4	1	SLEEVE	CONGR.
5	1	KEY	STEEL
6	1	PROPELLER NUT	STEEL
7	1	FLY HD. NUT	STEEL
8	48	TAPER BOLTS	STEEL 6 SPARES
9	48	NUTS FOR TB	STEEL 6 SPARES

REFERENCES  
 ARRANG. OF LINE SHAFING E-2500-201  
 PROPELLER SHAFT E-2500-202  
 STERN TUBE E-2500-205

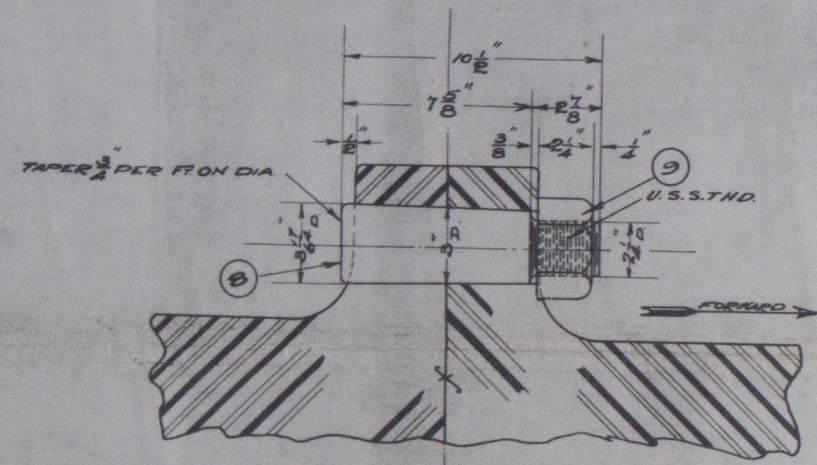
BOILER PRESSURE - 210"



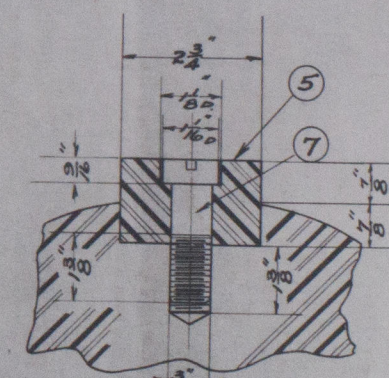
1 LINE SHAFT  
 SCALE 1" = 1 FT.



2 PROPELLER SHAFT  
 SCALE 1" = 1 FT.



DETAIL OF TAPER BOLT  
 SCALE 3" = 1 FT.



SECTION ON "M-M"  
 SCALE 6" = 1 FT.

CONTRACT NO.	CONTRACTOR	CLASSIFICATION
146	ATLANTIC CORPORATION	PROPERTY OF SHIP

FORGINGS TO MEET TESTS OF  
 LLOYD'S REGISTER OF SHIPPING  
 TENSILE STRENGTH  
 28 TONS TO 32 TONS  
 ELONGATION  
 29% FOR 28 TONS, 25% FOR 32 TONS  
 SEE RULES OF ABOVE BUREAU.

FORGINGS TO MEET TESTS OF  
 AMERICAN BUREAU OF SHIPPING  
 TENSILE STRENGTH  
 60,000 TO 70,000 LBS  
 ELONGATION  
 30% FOR 60,000, 22% FOR 70,000  
 SEE RULES OF ABOVE BUREAU.

J. A. Young  
 FERRIS TYPE STEEL SHIP  
 8800 TON D.M.

IN CASE OF ERROR OR MISUNDERSTANDING  
 NOTIFY THIS OFFICE IMMEDIATELY.

UNITED STATES SHIPPING BOARD  
 EMERGENCY FLEET CORPORATION  
 TECHNICAL DEPARTMENT,  
 WASHINGTON, D. C.

STD. ENG. 34 1/2" x 1 1/2" x 1 1/2"  
 LINE AND PROPELLER SHAFT  
 DETAILS

SCALE 1/8" = 1 FT. DATE 10/1/18  
 DRAWN BY J. T. CHECKED BY J. T.  
 TRACED BY J. T. APPROVED J. T.

Drawing No. E-2500-203

"Guatemala"  
 "VALIENTE" July 24 1929

42-0018