





# PARTICULARS OF PROTECTION TO OPENINGS, ETC.

HATCHWAYS ON FREEBOARD AND SUPERSTRUCTURE DECKS									
Upper Deck R. Q. Deck					Small Hatches				
Description of Hatchway	No. 1.	No. 2.	No. 3.	No. 4.	Upper Deck				
Dimensions of Hatchway	21'0" x 18'0"	23'4 1/2" x 18'0"	23'4 1/2" x 18'0"	22'6" x 18'0"	Escape Hatch on which platform 30" x 21"				
COAMINGS	Height above Deck	30"			Coaming 9 x 3 x 40 B. A. 2 1/2" W. P. Cover. 3" rest f.d.				
	Thickness	4 1/4"	4 1/4"	4 1/4"	2 Taraulins. Cleats 20" apart.				
	Stiffeners	2 x 9 x 3 x 40 B. A. 2 1/2" W. P. Cover. 3" rest f.d.			Raised Quarter Deck				
	Brackets, Stays	Mediam Patent			Escape Hatch on which platform 30" x 21". As above				
HATCH BEAMS	Number	3	4	4	On Port Deck.				
	Spacing	5' 3"	4' 10"	4' 10"	Bunker Hatch, port and starboard 5' 4" x 2' 4"				
	Scantling and Sketch	10' x 1 1/2" x 36"			Coaming 30" x 44". 2 1/2" W. P. Cover. 3" rest f.d.				
	Bearing Surface	3 1/2"			3" rest. 2 Taraulins. Cleats 24" apart.				
FORE AND AFTERS	Number				Alt to above. 24" x 22" P. S. Coaming 30" x 44"				
	Spacing				2 1/2" W. P. Cover. 2 1/2" rest. 2 Taraulins. Cleats 15" apart				
	Unsupported Lengths				In Port 'tween deck.				
	Scantling* and Sketch				One Hatch, port and starboard, 5' 4" x 2' 6". Coaming 9 x 3 x 44 B. A. 2 1/2" W. P. Cover. 3" rest.				
HATCH COVERS	Material	W. P.	W. P.	W. P.	2 Taraulins. Cleats 24" apart				
	Thickness	3"	3"	3"	One Hatch, port and starboard, 4' 2" x 3' 0". Coaming 9 x 3 x 44 B. A. 2 1/2" W. P. Cover. 3" rest.				
	How fitted	7 x 9.	7 x 9.	7 x 9.	2 Taraulins. Cleats 24" apart				
	Bearing Surface	3"	3"	3"					
Spacing of Cleats	24"	24"	24"	24"					
Number of Taraulins	2.	2.	2.	2.					
<p>*Are wood fore and afters steel shod at all bearing surfaces? Yes ✓</p> <p>Are battens and wedges efficient and in good condition? Yes ✓</p> <p>Are tarpaulins in good condition and in accordance with rule requirements? Yes ✓</p> <p>Are lashings provided in accordance with rule requirements? Yes ✓</p>									

Particulars of fiddle, funnel and ventilator coamings:— Engine room skylight, fiddle, funnel and ventilator coamings of steel, strongly constructed. Fiddle opening fitted with hinged steel covers.

Particulars of Flush Bunker Scuttles:—

None ✓

Particulars of Companionways:—

None ✓

Particulars of Ventilators in exposed positions on freeboard and superstructure decks:—

On Forecastle Deck. One 20" D. 40 demick post, to fore hold, stayed.  
 On Bridge Deck. Two 15" " to fore hold. Coaming 30" x 38"  
 One 9" " to Accom. " 21" x 38"  
 On R. Q. Deck. Two 15" " No. 2 hold " 3' 9" x 38" stayed ✓  
 On Port Deck. Two 15" " " " " 30" x 38"  
 Two 12" " to side bunker " 30" x 38"  
 Two 9" " bunkers " 30" x 38"

— all vents supplied with wood plugs and canvas covers.

Particulars of Air Pipes in exposed positions on freeboard, raised quarter, or superstructure decks:—

On Upper Deck (inside Y'ls) One 2 1/2" g. nk to fore R. 18" to lip.  
 One 3" " No. 1 tank 36" " "  
 Two 3" " " " 36" " "  
 On Bridge Two 3" g. nk to No. 3 tank 18" to lip.  
 On R. Q. Deck Two 3" " " " 30" " "  
 One 3" " " " 18" " "  
 On Port Deck One 3" " " " 18" " "  
 Two 2" " " " 18" " "

— all air pipes fitted with wood plugs and canvas covers

Particulars of Gangway Cargo and Coaling Ports:—

None ✓



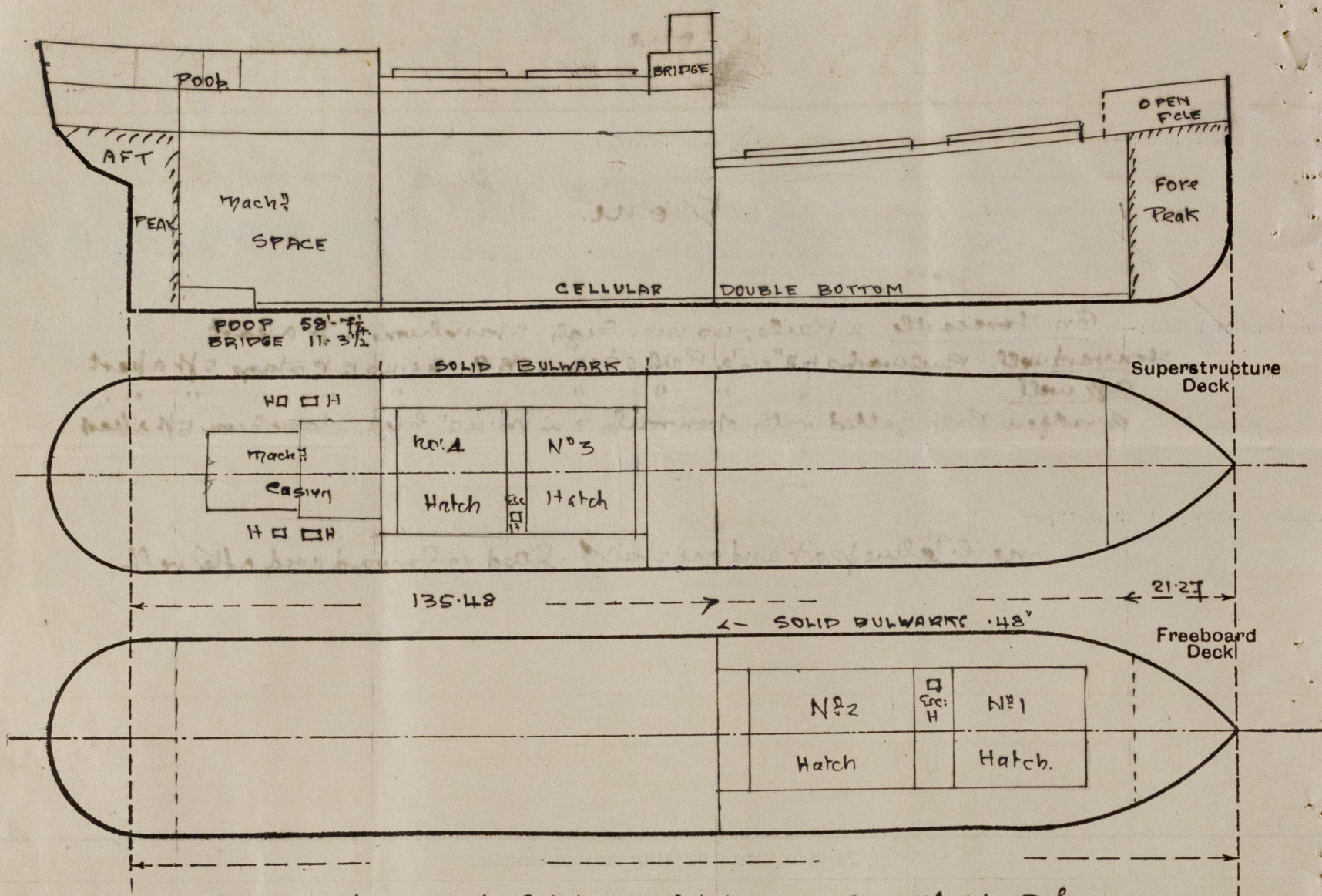
© 2019  
 Lloyd's Register  
 Foundation



W415-0110(212)



Superstructure bulkheads, trunks, deckhouses, casings, cargo and coaling hatchways, extent and thickness of sheathing on the freeboard deck, gangway, cargo and coaling ports, and any other openings, etc., which would affect the seaworthiness of the ship are to be shewn on the following sketches:—



The raised quarter deck is parallel to the sheer line of the upper d/b

Actual displacement at actual draught 15'-2" = 2,467 Tons  
T.P.S. " " " = 14.62 "

State any special features in the construction of the ship:—

### Timber Assignment.

Vessel is fitted with a forecabin, length 21.27 ft; also a poop 58'-7 1/4" long protecting the machinery casings.

The double bottom tanks within the midship half length are fitted with a watertight centre division. Permanent bulwarks 48" x 26" stiffened with 5 1/2 x 3 x 38 B.A. rail with ships 6 ft apart are fitted in both wells.

The steering gear is fitted in the poop aft and worked by telemotor. A hand gear is also fitted on the poop deck.

Buckets for timber uprights are fitted 9 ft apart in each well and eyes for lashing are riveted to the deck stringer every 9 ft in each well, the end eyes being in each case 4'-6" from the superstructure bulkheads.

Builder's name and yard number

Messrs Short Bros & Co No 447.

Names of sister ships

"Springwear", Springwood Sea Bk No. 31863

Owners

The Springwell Shipping Co Ltd

Fee £

10 0 0

Received by me

Will be charged on completion



© 2019

Lloyd's Register  
Foundation