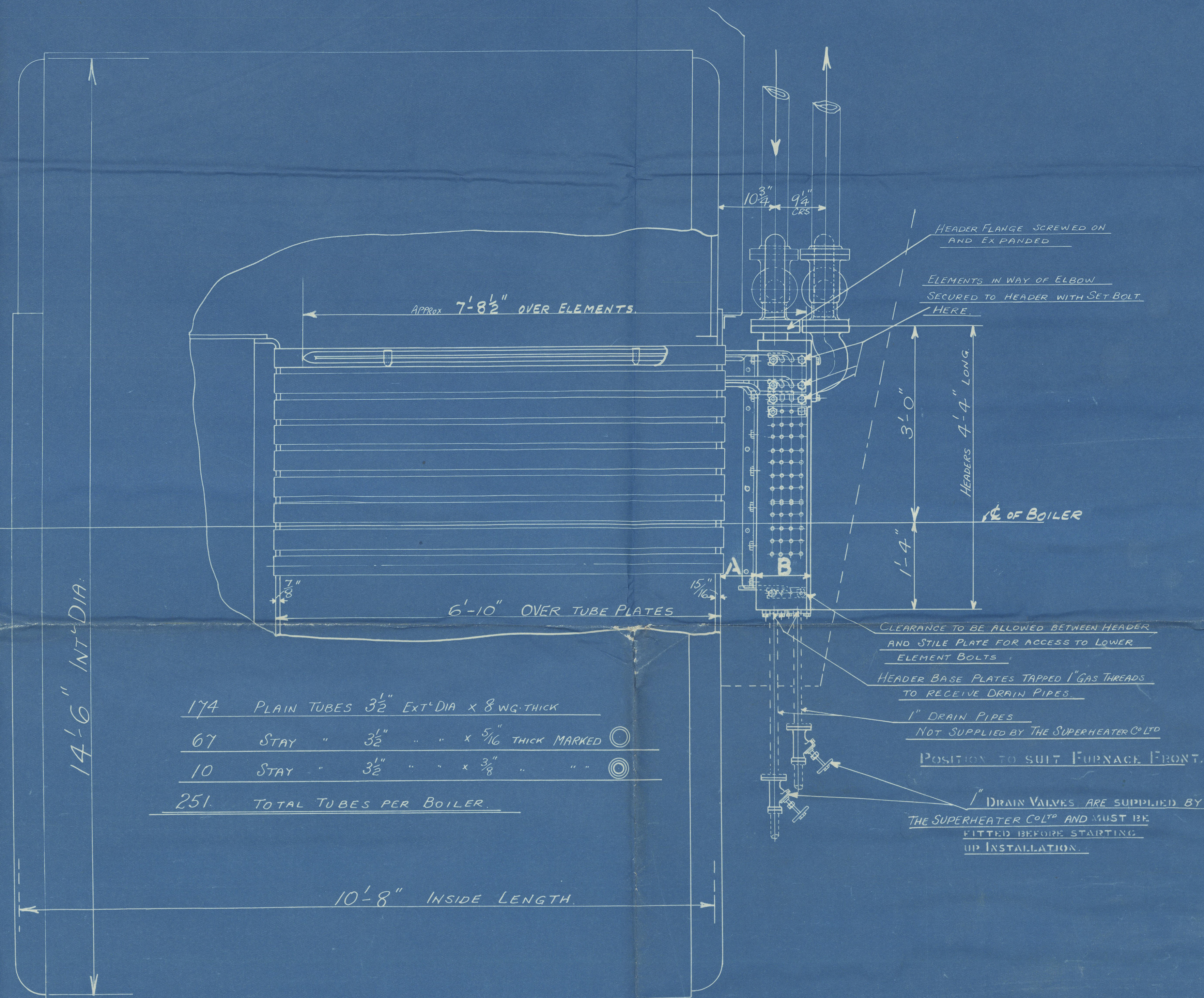
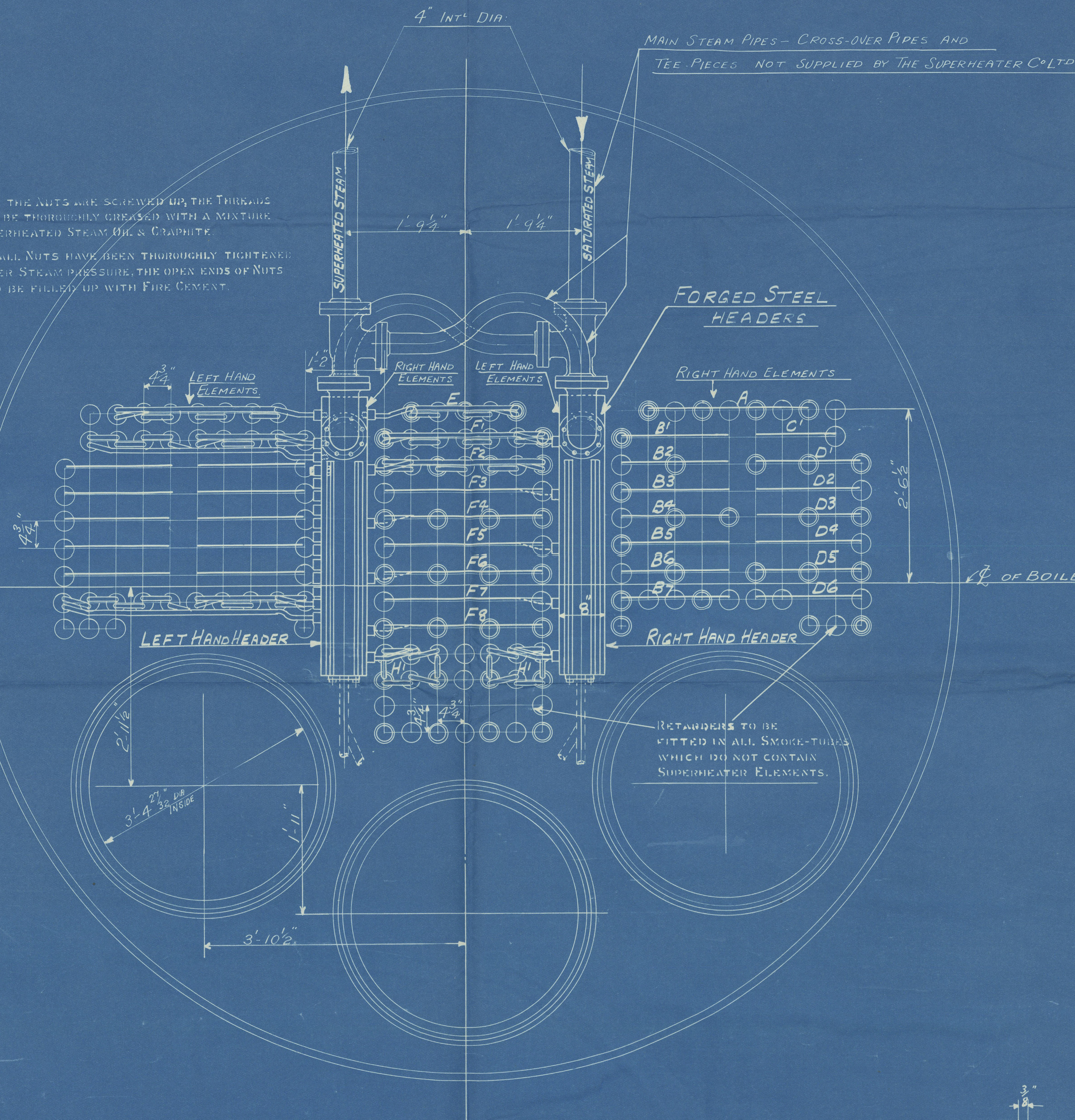


REVISION	REMARKS
A	HEADERS BROUGHT 1" NEARER TO FRONT TUBE PLATE BY INCREASING DEPTH OF HEADER FROM 4" TO 10". MAIN SUPERHEATED PIPE TO BE ON STARBOARD SIDE I.E. ABOVE LEFT HAND HEADER.

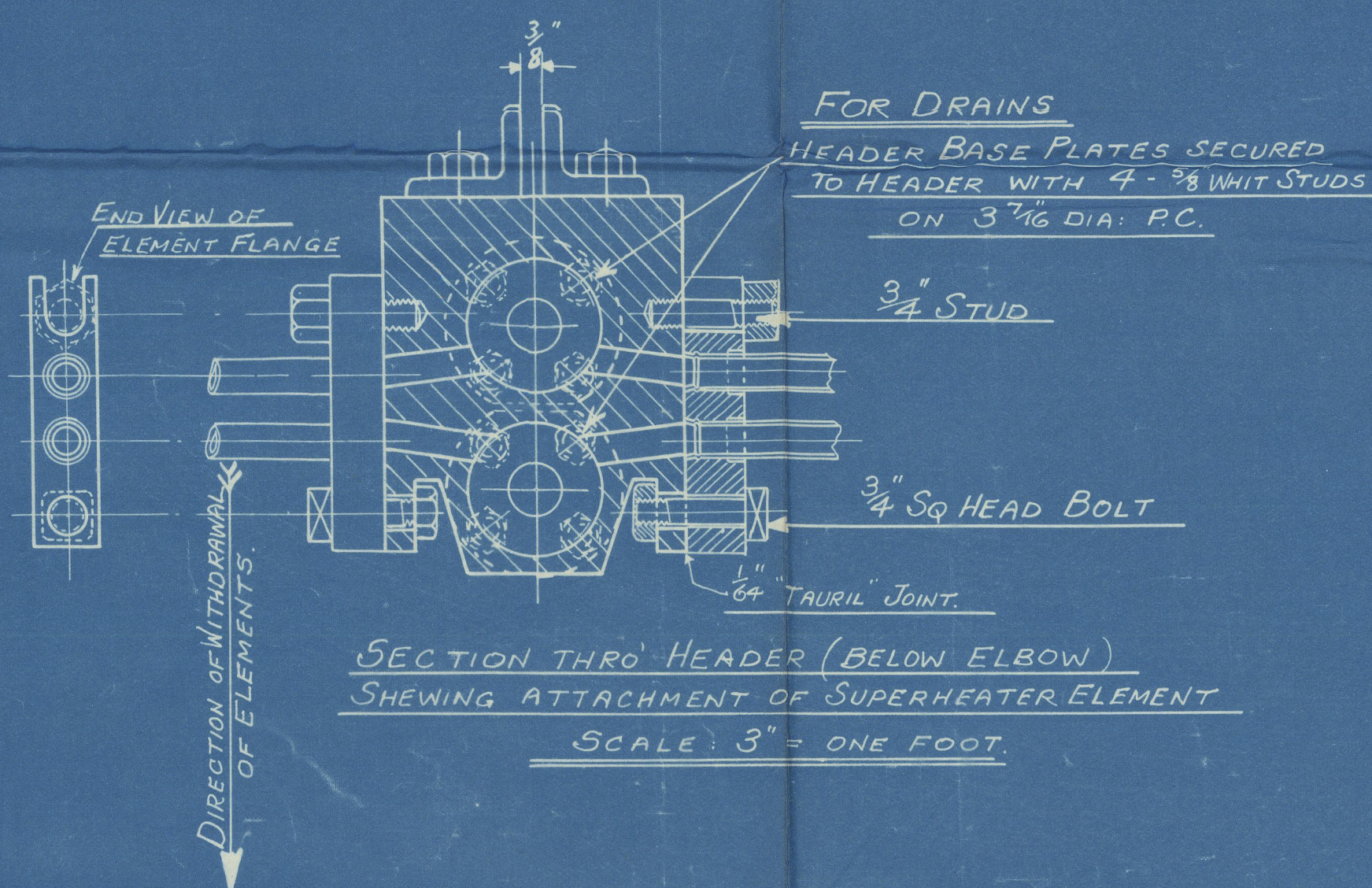
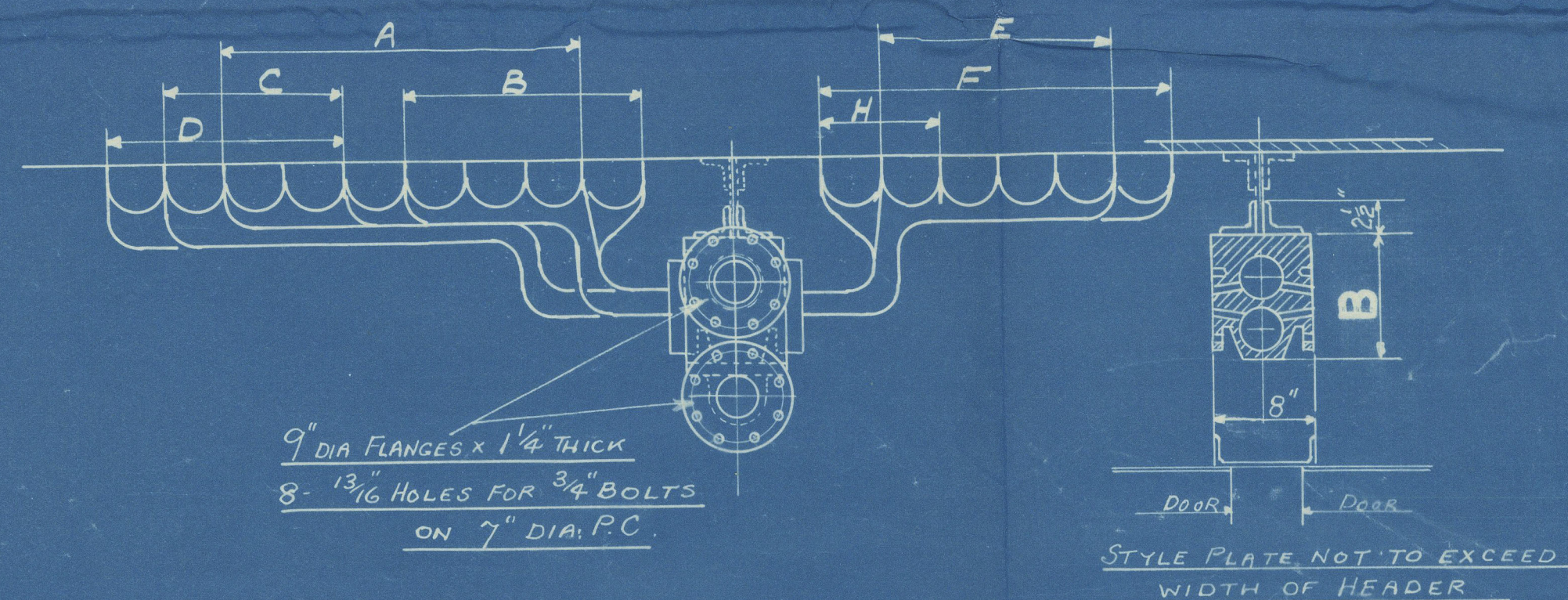
FOR BOILER NO 1452 ONLY

BEFORE THE NUTS ARE SCREWED UP, THE THREADS SHOULD BE THOROUGHLY GREASED WITH A MIXTURE OF SUPERHEATED STEAM OIL & CHARPITE.

AFTER ALL NUTS HAVE BEEN THOROUGHLY TIGHTENED UP UNDER STEAM PRESSURE, THE OPEN ENDS OF NUTS SHOULD BE FILLED UP WITH FIRE CEMENT.



174	PLAIN TUBES	3 1/2"	EXT. DIA	X 8 WG. THICK
67	STAY	3 1/2"	" " " "	X 5/16" THICK MARKED
10	STAY	3 1/2"	" " " "	X 3/8" " "
251	TOTAL TUBES PER BOILER.			



NUMBER OF BOILERS	ONE PER SHIP (NATURAL DRAUGHT- COAL FIRED)
WORKING PRESSURE	210 LBS PER SQ. IN.
GRATE AREA	= 53.7 #
HEATING SURFACE	= 1940 #

TO PASS LLOYDS SURVEY
TEST PRESSURE 630 LBS PER SQ. IN.

BOILERS NOS W0° B.8929, B.8931, B.8933, B.8935, 6316M, 197734, 983.02

THE SUPERHEATER CO. LTD
BUSH HOUSE LONDON W.C.2
TITLE ARRANGEMENT OF SUPERHEATER "R.B." TYPE

A	B	REF	CMD	DRAWING NO.
616	10"	6226	1/11/33	BOILER NO 1452 MN9110 A
716	9"	6244	1/18/34	BOILER NO 1455 MN9110 B

CHARLES D. HOLMES & CO. LTD

RETAIN

Lloyd's Register
Foundation

SCALE
1" = ONE FOOT
DWG NO TCD-10
17/1/33 775/235