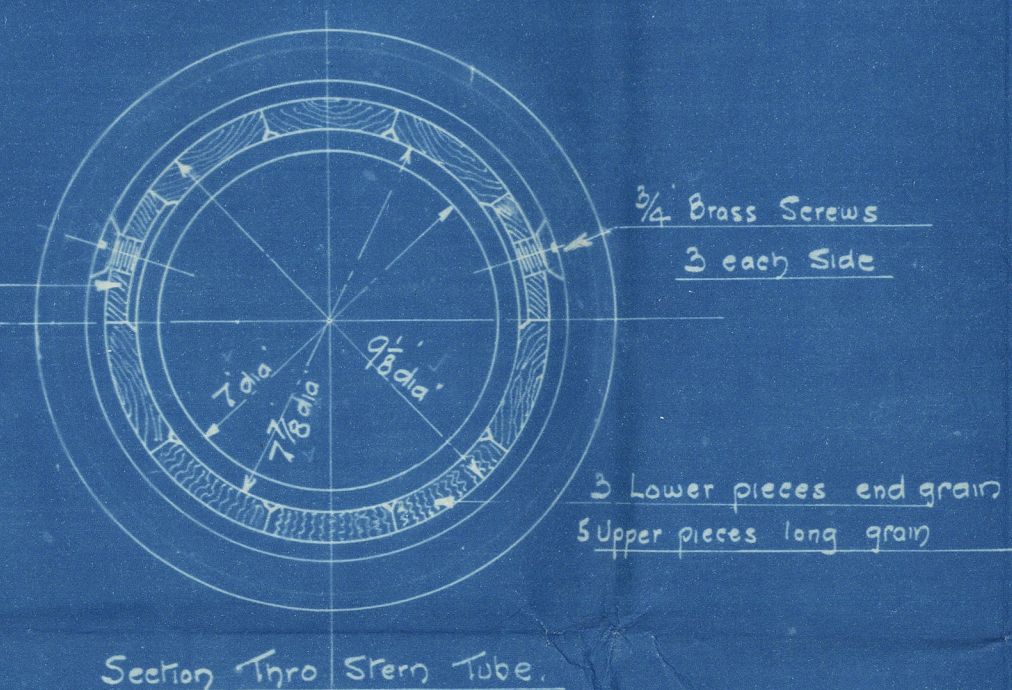
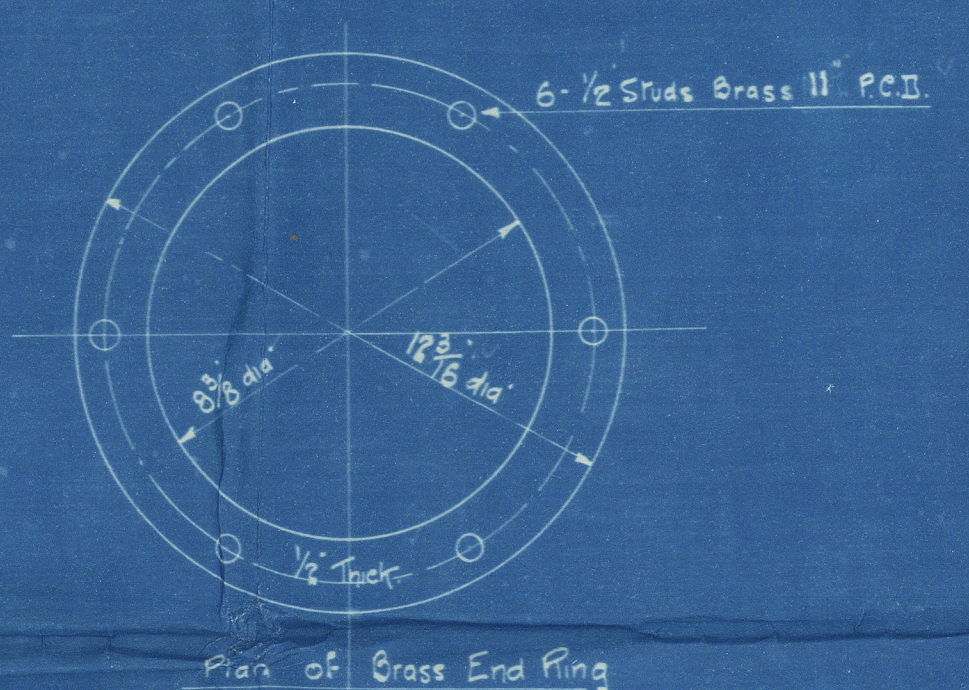


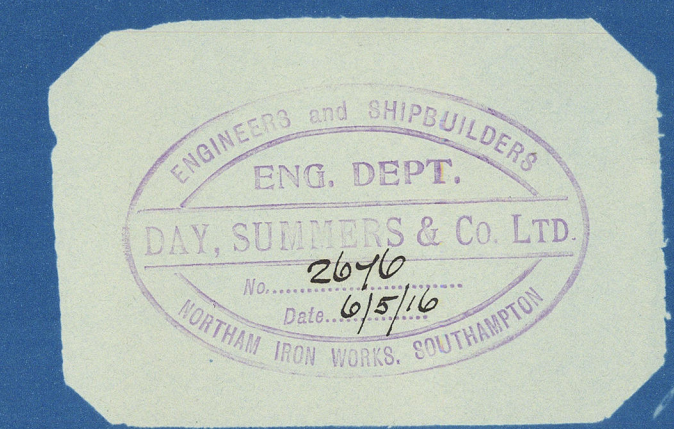
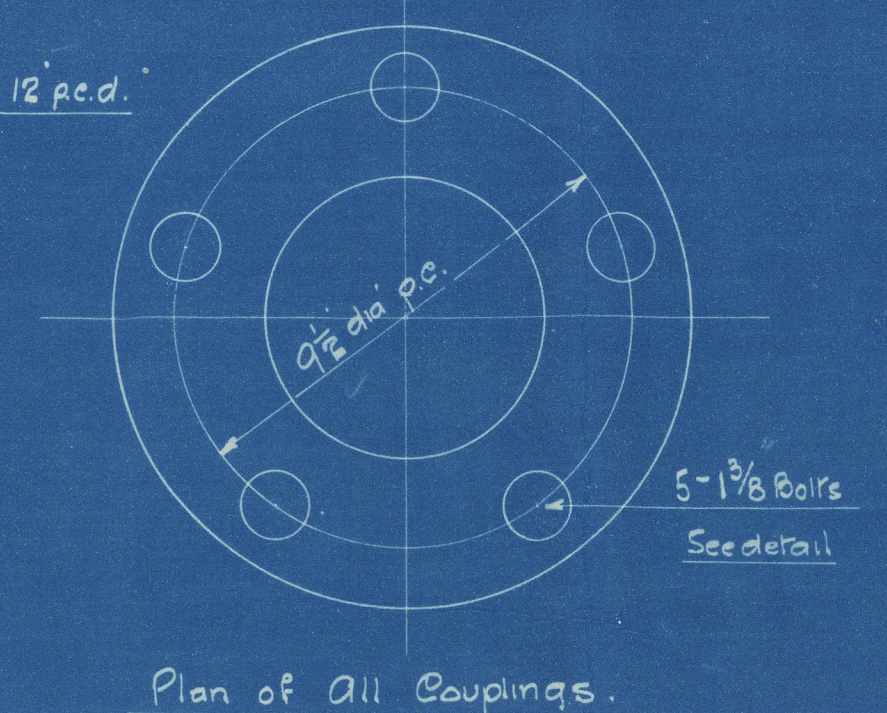
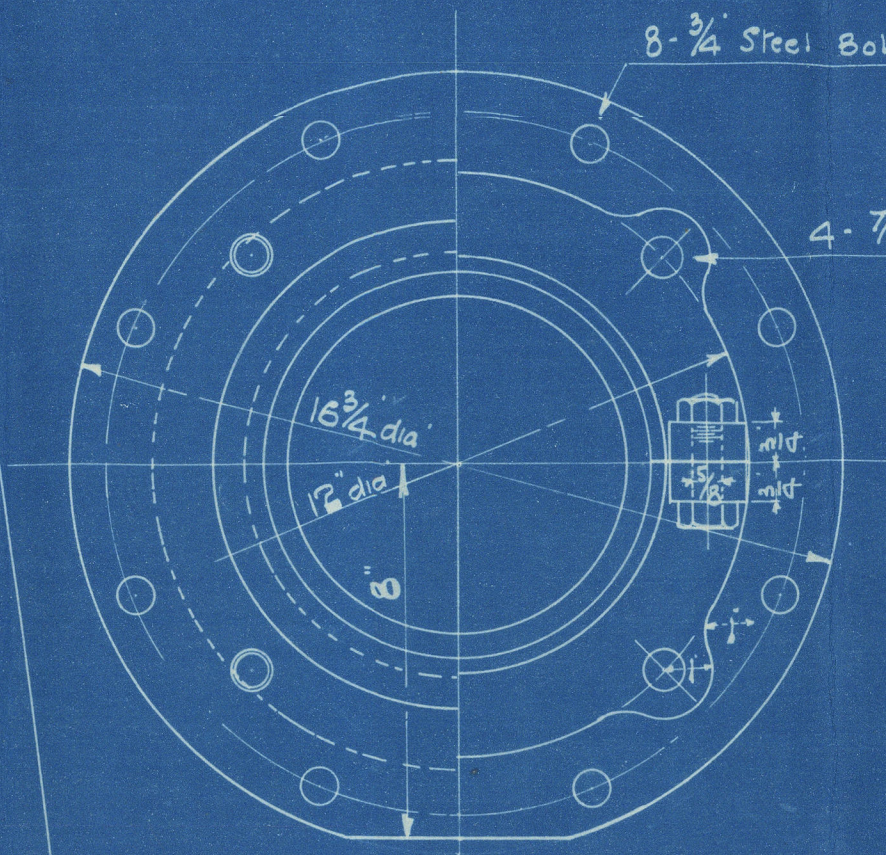
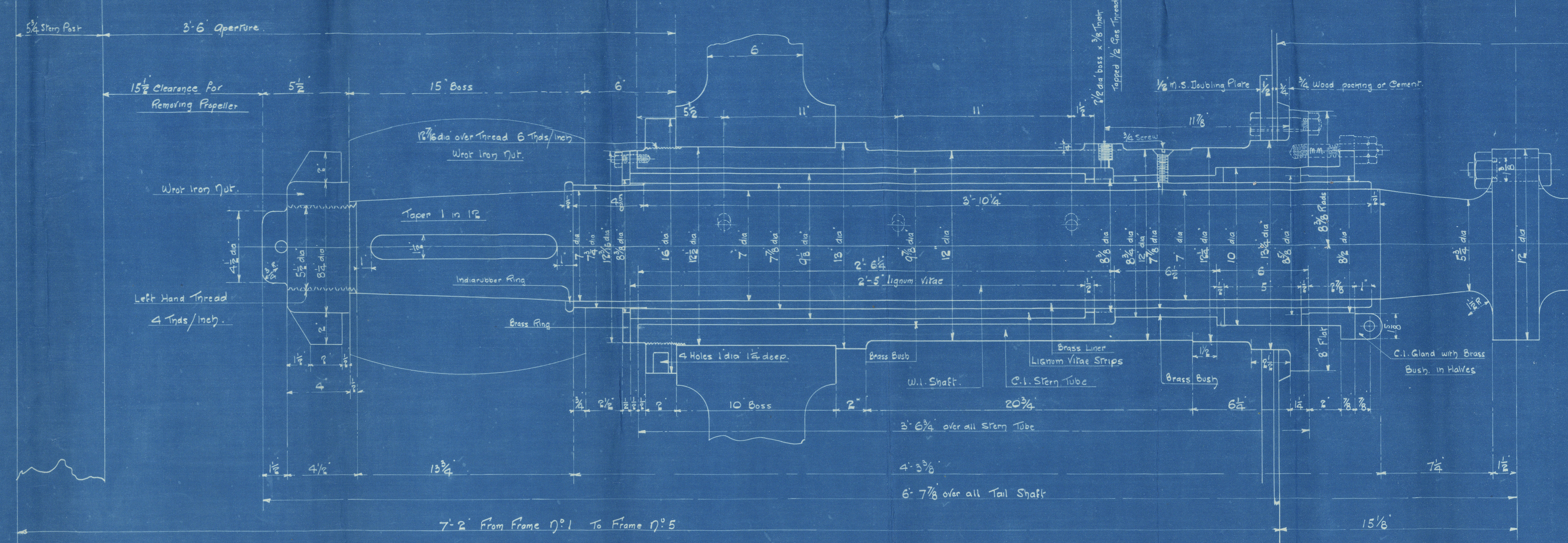
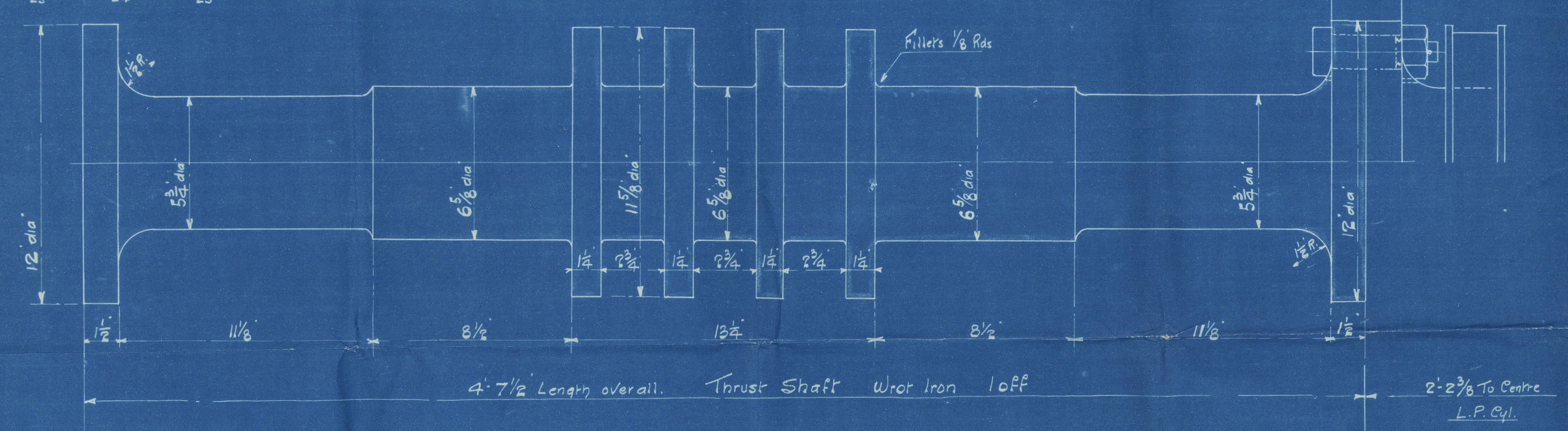
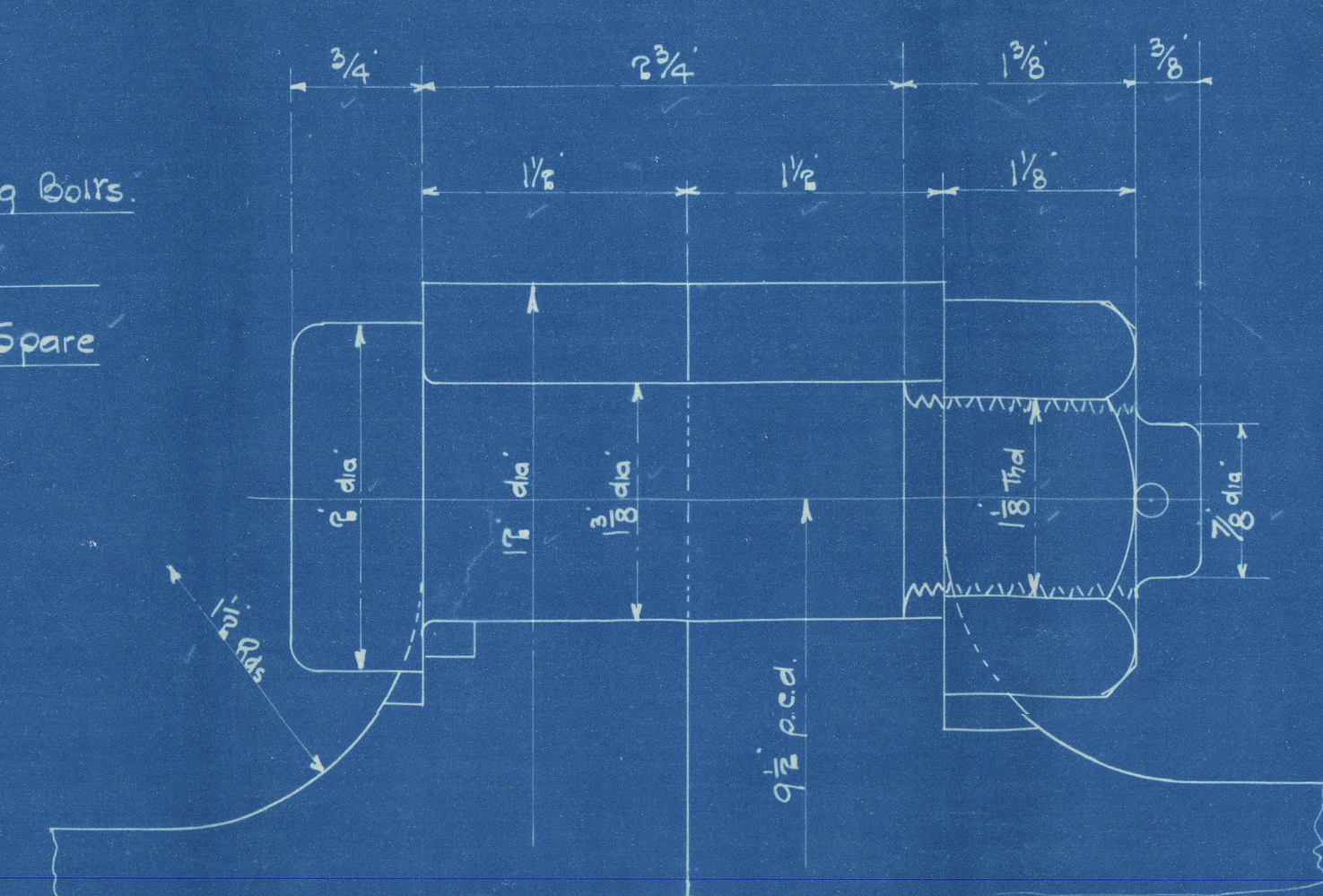
PROPELLER CAN BE REMOVED
WITHOUT DISTURBING TAIL-SHAFT.

THRUST BLOCK ARRANGED WITH SEPARATE MACHINED SOLEPLATE TO
FACILITATE REPLACEMENT WHEN REMOVED FOR WITHDRAWAL OF PROPELLER SHAFT.

PROPELLER SHAFT CAN BE WITHDRAWN WITHOUT DISTURBING ANY
PORTION OF MAIN ENGINES.



Steel Coupling Bolts.
10 off
5 off Spare

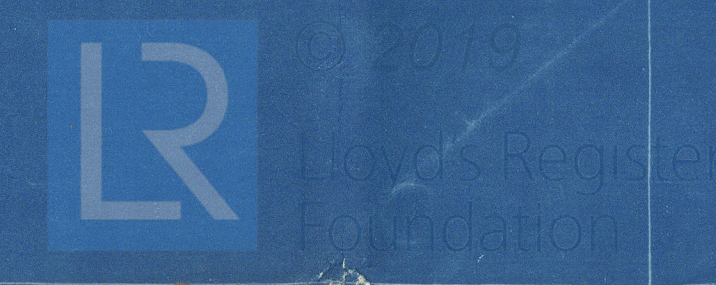


Arrangement & Details of Stern Tube & Shafting Engines No 329

Scales 1/2" x 3" = 1 Foot

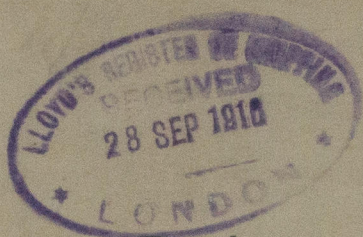
2676

Tail Shaft Smooth Turned all over.
Thrust Shaft Rough Turned all over & Smooth Turned where Tinted.



Day, Sammers Cupine No 32

Shafting.



Rejo
Southwick

BUNDERLAND R.P.T. No. 26927

RETAIN

W 412-0080



© 2019

Lloyd's Register
Foundation