

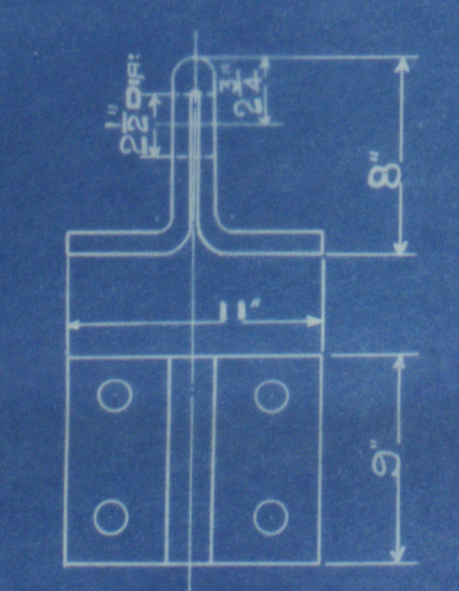
20/3/24

THE NORTH EASTERN MARINE ENGINEERING CO. LTD.

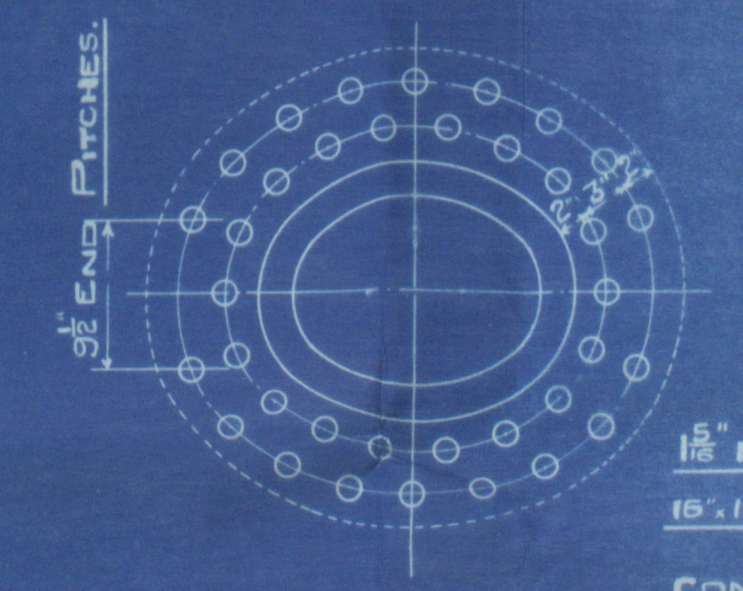
WALLSEND-ON-TYNE.

BOILER

SCALE:-1 INCH 1 FOOT

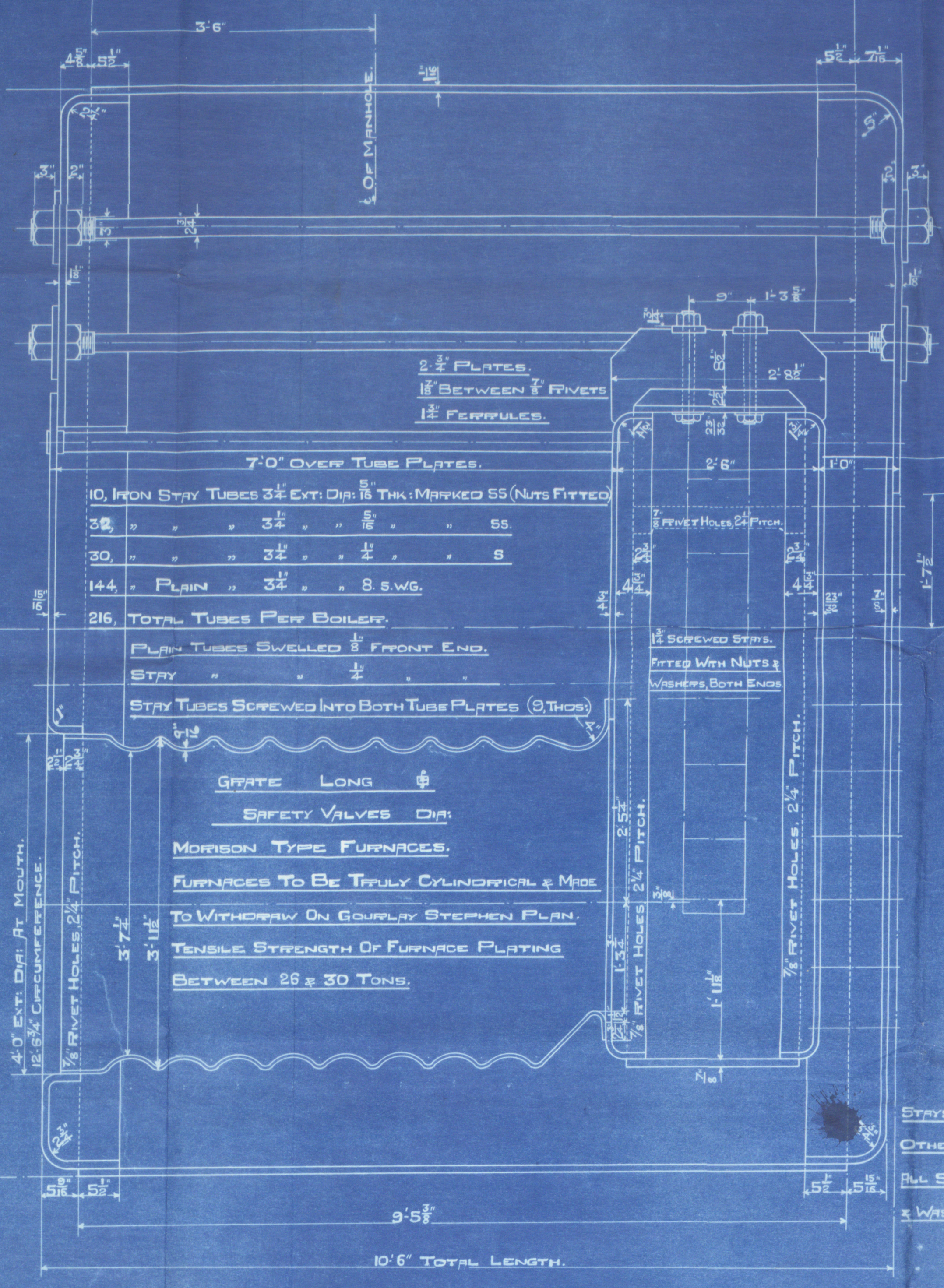
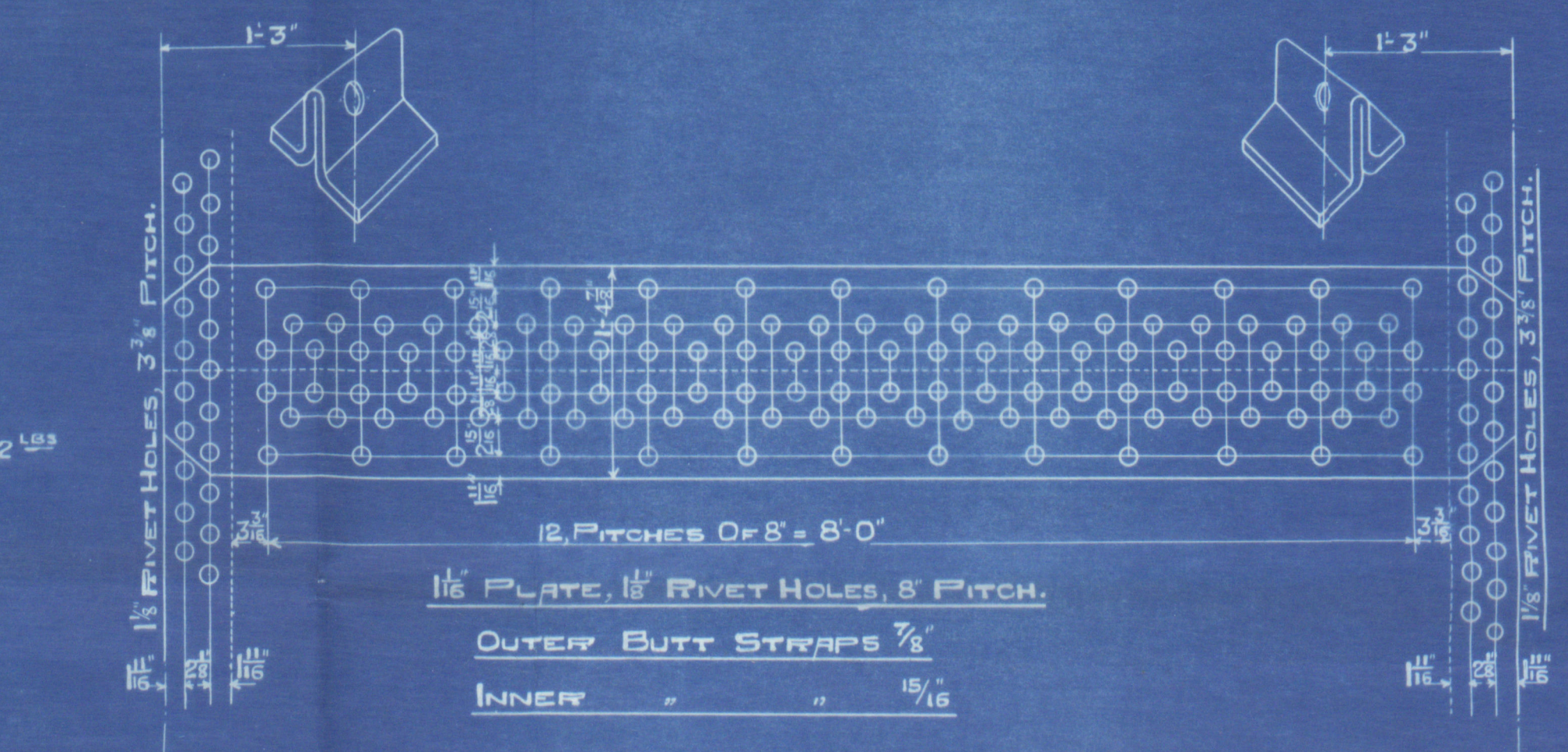
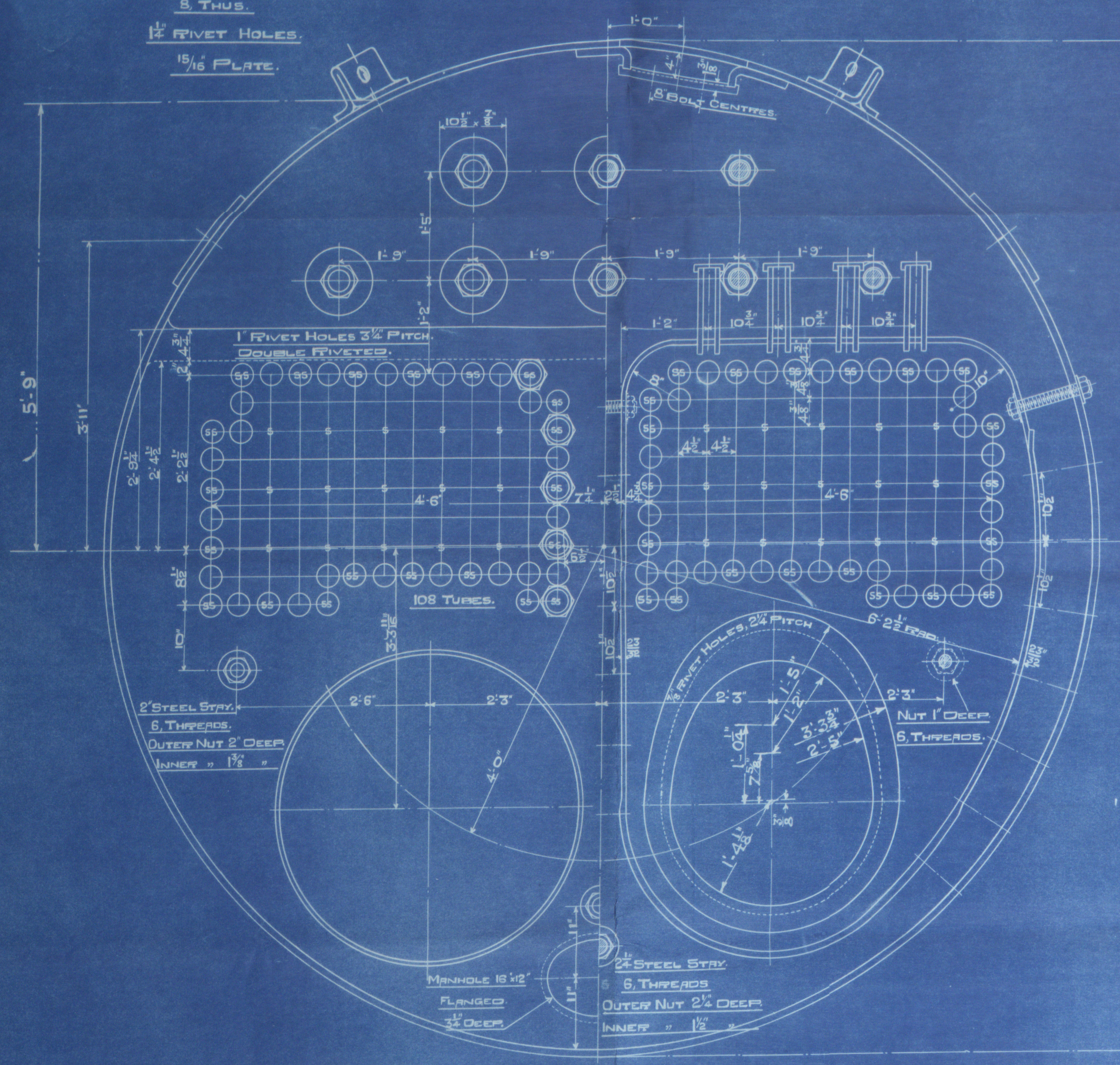


BOILER LIFTERS.  
8. THUS.  
1/2 RIVET HOLES.  
1/2 PLATE.



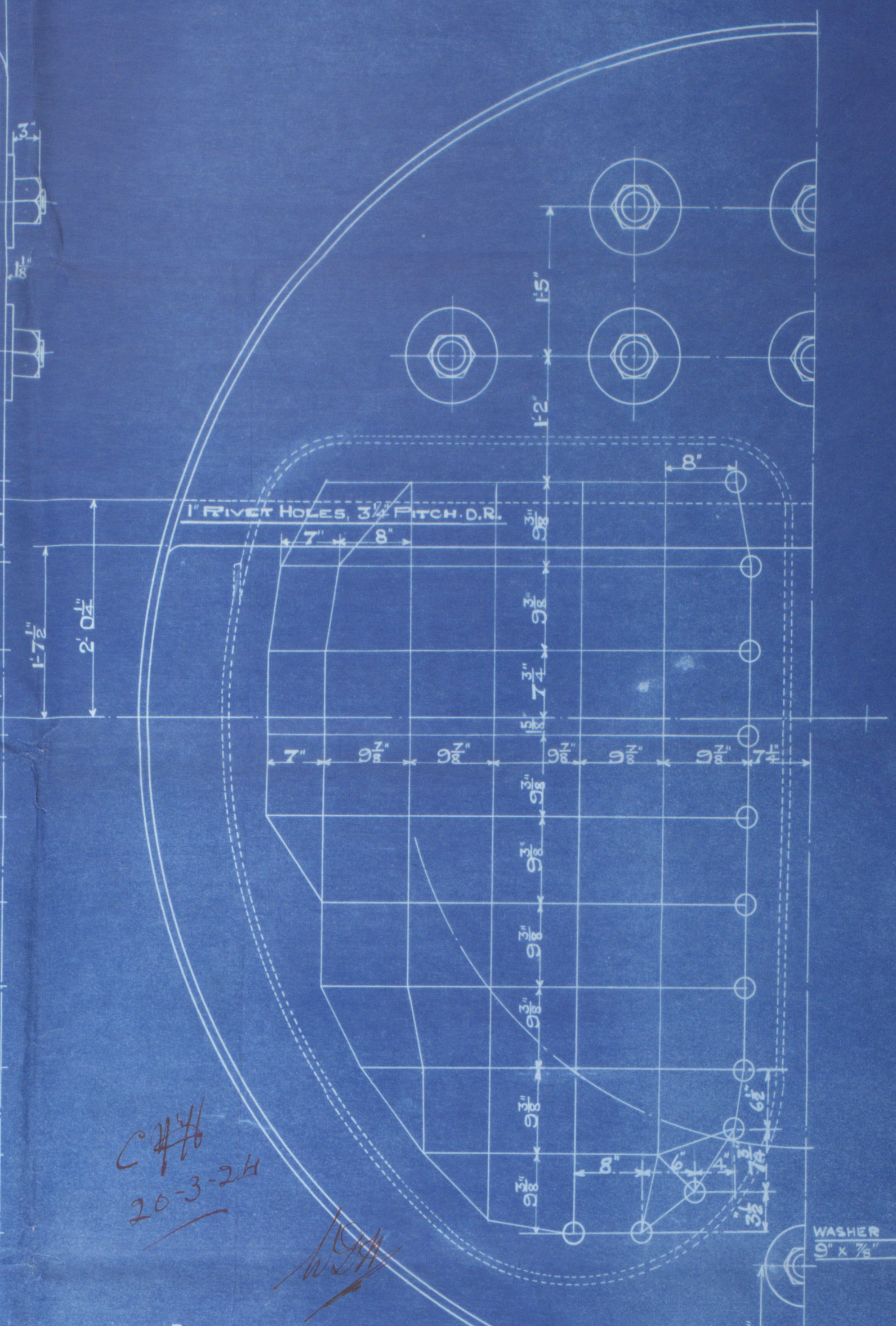
16" RIVET HOLES  
16" MANHOLE IN SHELL.  
COMPENSATING RING 2 1/2" x 2 1/2" x 1/2"

PLATE STRENGTH = 85.93%  
RIVET " = 90.5%  
SHELL (34-2) 28 x 85.93. = 182.183  
2.75 x 153%

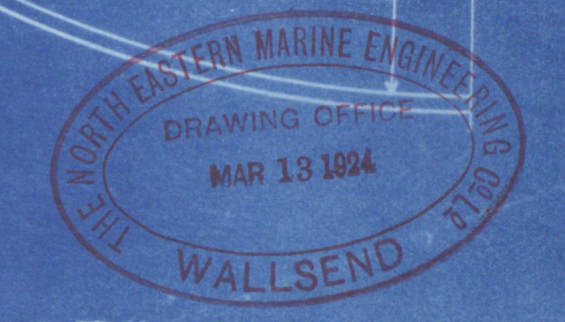


TO OWNERS & LLOYDS REQUIREMENTS.

HEATING SURFACE TUBES	= 1286 sq
" " ELSEWHERE	= 316 "
" " TOTAL	= 1602 " PER BOILER.
WORKING PRESSURE	180 LBS.
TEST	320 "
ALL PLATES, STAYS & RIVETS, STEEL. SMOKE TUBES, WROOT IRON.	
TENSILE STRENGTH OF SHELL PLATES, BUTT STRAPS, & GIRDER	28-32 TONS/D
" " OTHER PLATES	26-30 TONS/D
" " LONGITUDINAL STAYS	28-32 TONS/D
" " SCREWED	26-30 "
ALL HOLES DRILLED IN PLACE AFTER PLATES ARE BENT.	



STAYS THUS 0 1/2 DIA: 9 THOS: NUTS 1" DEEP.  
OTHER STAYS 1 1/2 " " " 1 1/2 " "  
ALL SCREWED STAYS FITTED WITH NUTS  
& WASHERS, BOTH ENDS.



TRACING N° 678  
CONTRACT:- 2576

1. THUS STAYS? BOILER.  
1. OPPOSITE HAND, PORT BOILER.



No 2576

North Eastern Marine Eng. Co. Ltd.

Main Boilers ✓

S. S. LETCHWORTH.

NEWCASTLE O.

Report No. 48282.

RETAIN

RETAIN

W410-0004



© 2019

Lloyd's Register  
Foundation