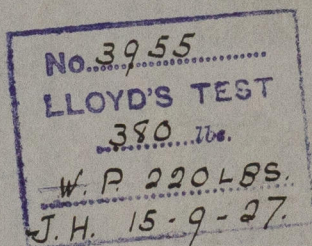


SUNDERLAND.
A. DICKINSON & SONS'
C. 885.

BOILER PLAN.

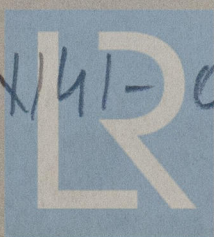
Messrs Short
Bros No 427



S/S HOLYSTONE.

SUNDERLAND RPT. NO. 29601

X/41-0154



© 2019

Lloyd's Register
Foundation

DRAWING S586

STEEL BOILERS

5.427

PLATE	THICKNESS
SHELL PLATES & BUTT STRAPS	29/4 TO 33/4
COMBUSTION CHAMBER GIRDERS	28 TO 32
ALL OTHER PLATES	26 TO 30

TO LLOYD'S REQUIREMENTS FOR A WORKING PRESSURE OF 220 LBS/SQ. IN. TEST PRESS. OF 380 LBS/SQ. IN.

ALL PLATES, RIVETS, STAYS & GIRDERS OF STEEL

TUBES OF WROUGHT IRON

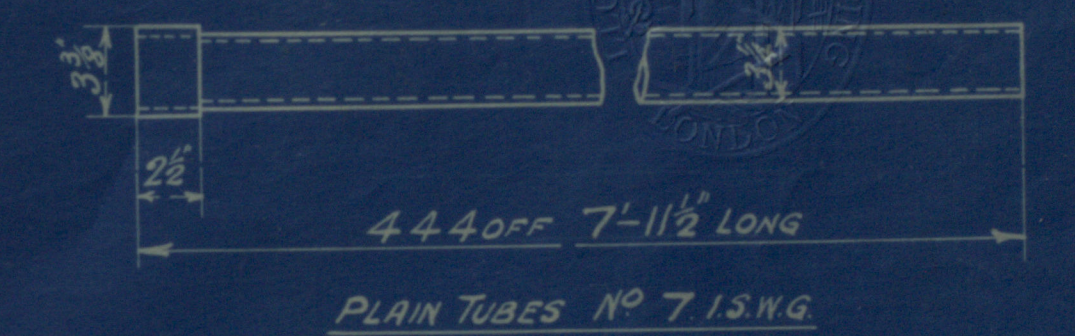
SCALE: 1 INCH = 1 FOOT.

ENGINE	DATE	FURNACES
SS5 2 OFF	INTENDED FOR MESSRS SHORT BROS, 25 N° 427	MARCH 15 th 27
		JEIGHTON'S SECTION

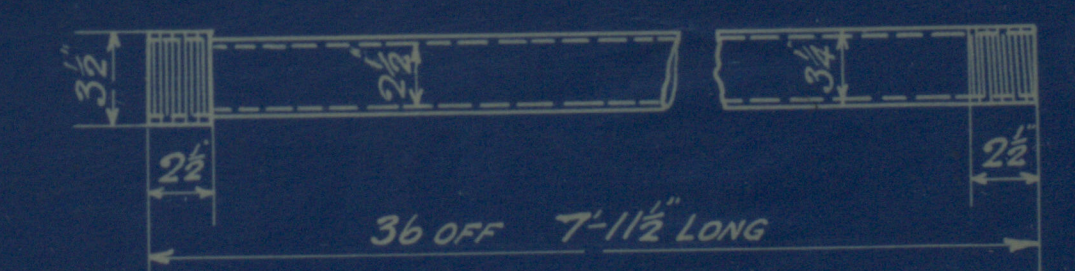


Total Heating Surface in Two
Boilers = 5500 sq. feet.

STAYS	NO.	EST. DIA.	EST. AREA	NO. OF STAYS
26	1/4	9	16075	2031
30	1/8	9	17328	2355
28	2	9	18578	269
32	3/8	6	22868	413
	3/8	6	31616	785



EFF AREA = 2.1737 sq. ins.



EFF AREA = 2.6765 sq. ins.

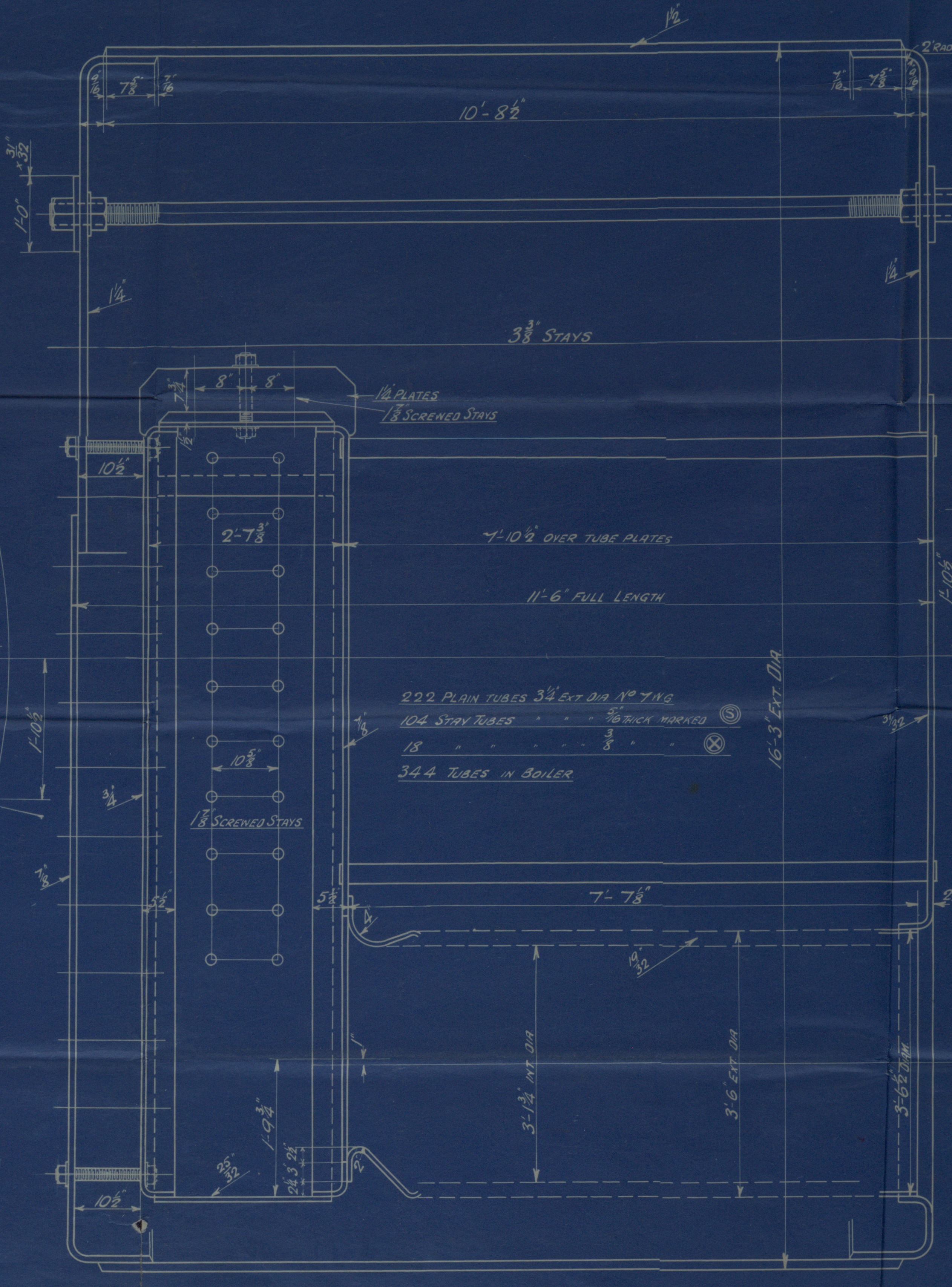
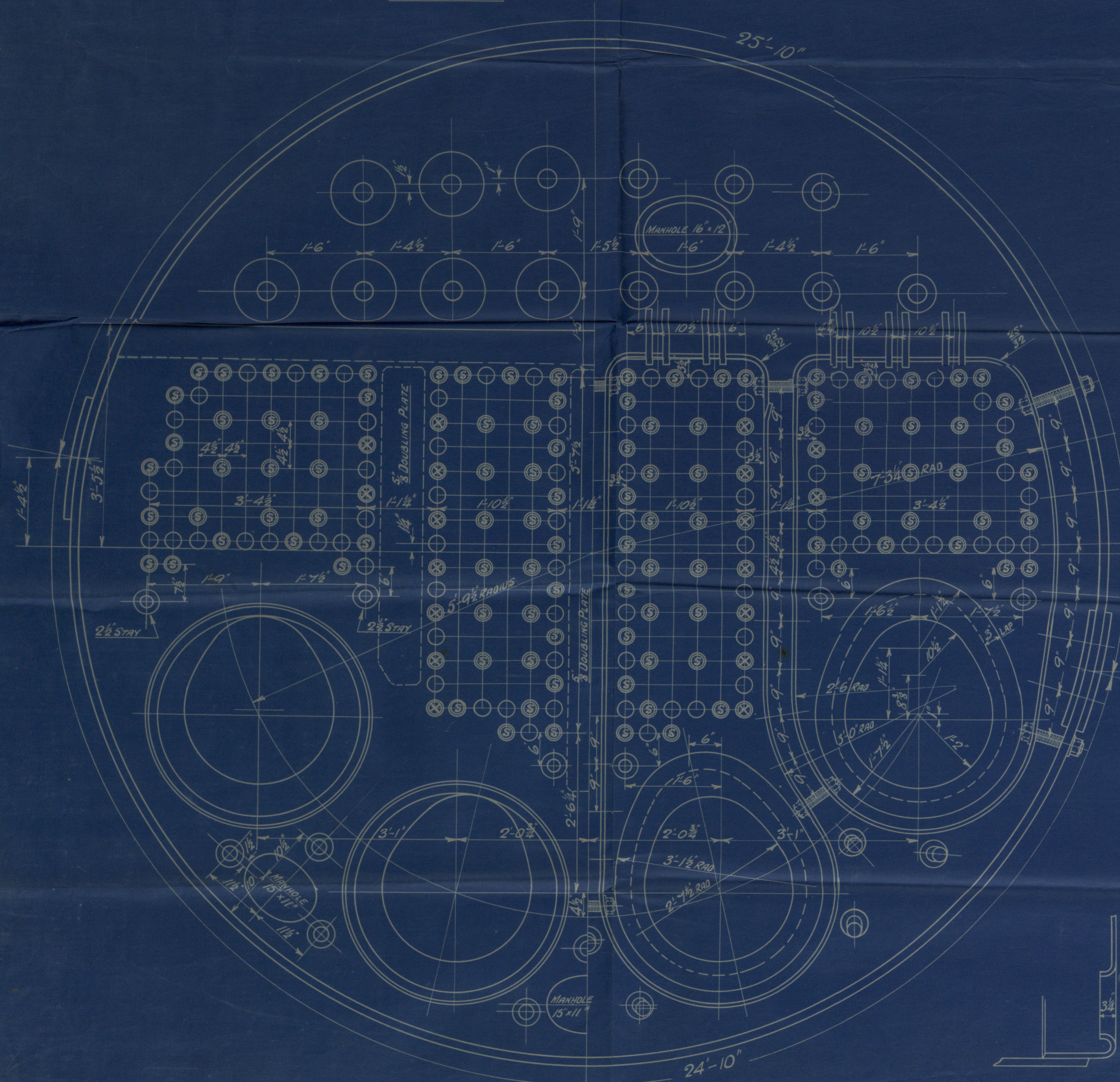
POSITION	RIVETING	RIVET HOLES	PITCH	LAP
FRONT & BACK SEAMS	DOUBLE	1 3/8	3 3/4	6 1/2
COMBUSTION CHAMBER LONGITUDINAL SEAMS	SINGLE	1	2 1/2	3
COMBUSTION CHAMBER & FURNACE SEAMS	"	1	2 1/2	3

LONGITUDINAL SEAMS FITTED WITH DOUBLE BUTT STRAPS

OUTER STRAPS 1 3/8 THICK INNER STRAPS 1 1/8 THICK

RIVET HOLES 1 3/8 DIA.

SCALE: 1/2" = 1 FOOT.



SS5

NOTE: ALL SCREENED STAYS TO HAVE
NUT FITTED ON EACH END

R

41-0154