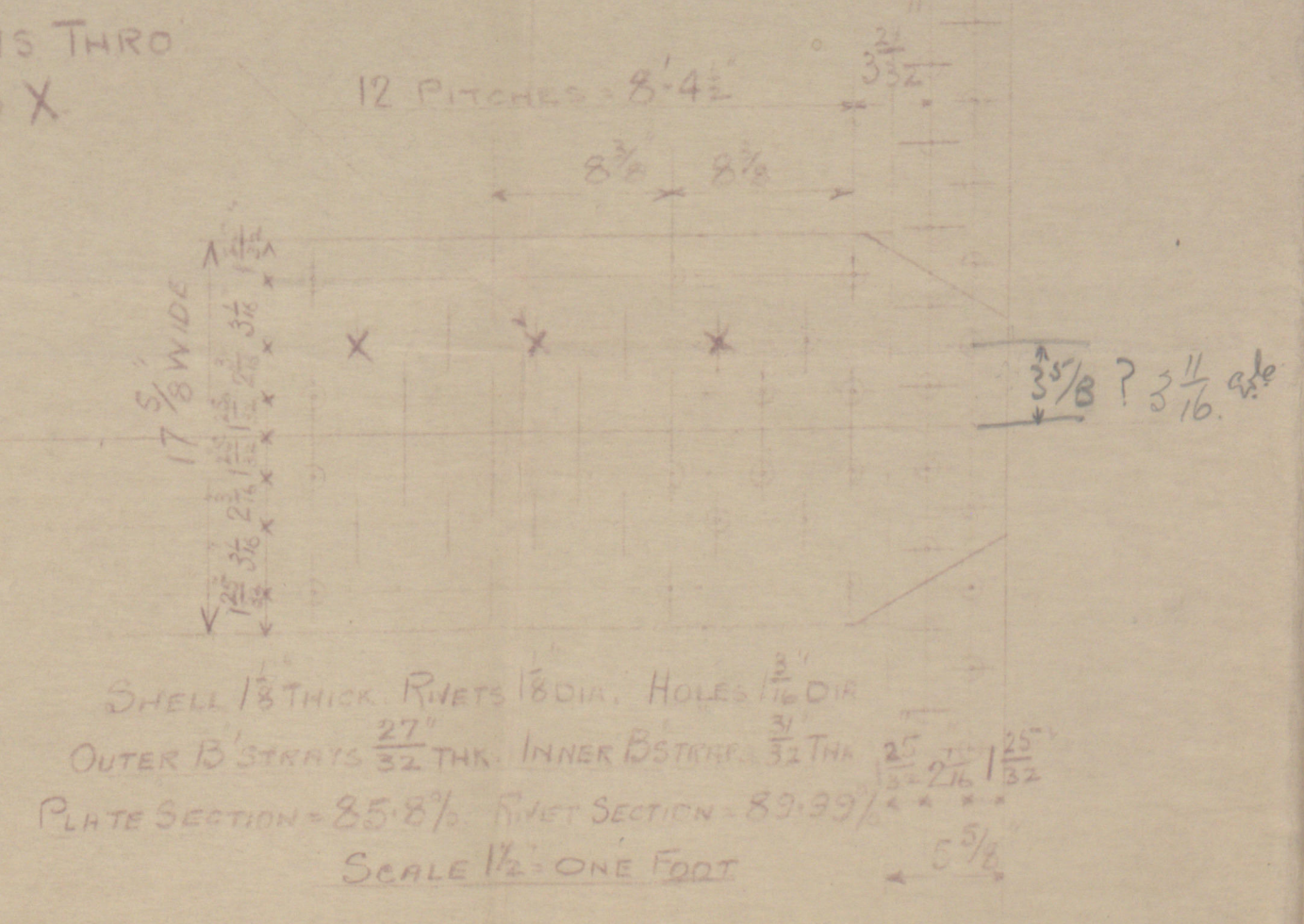


17/11/31
10/12/31

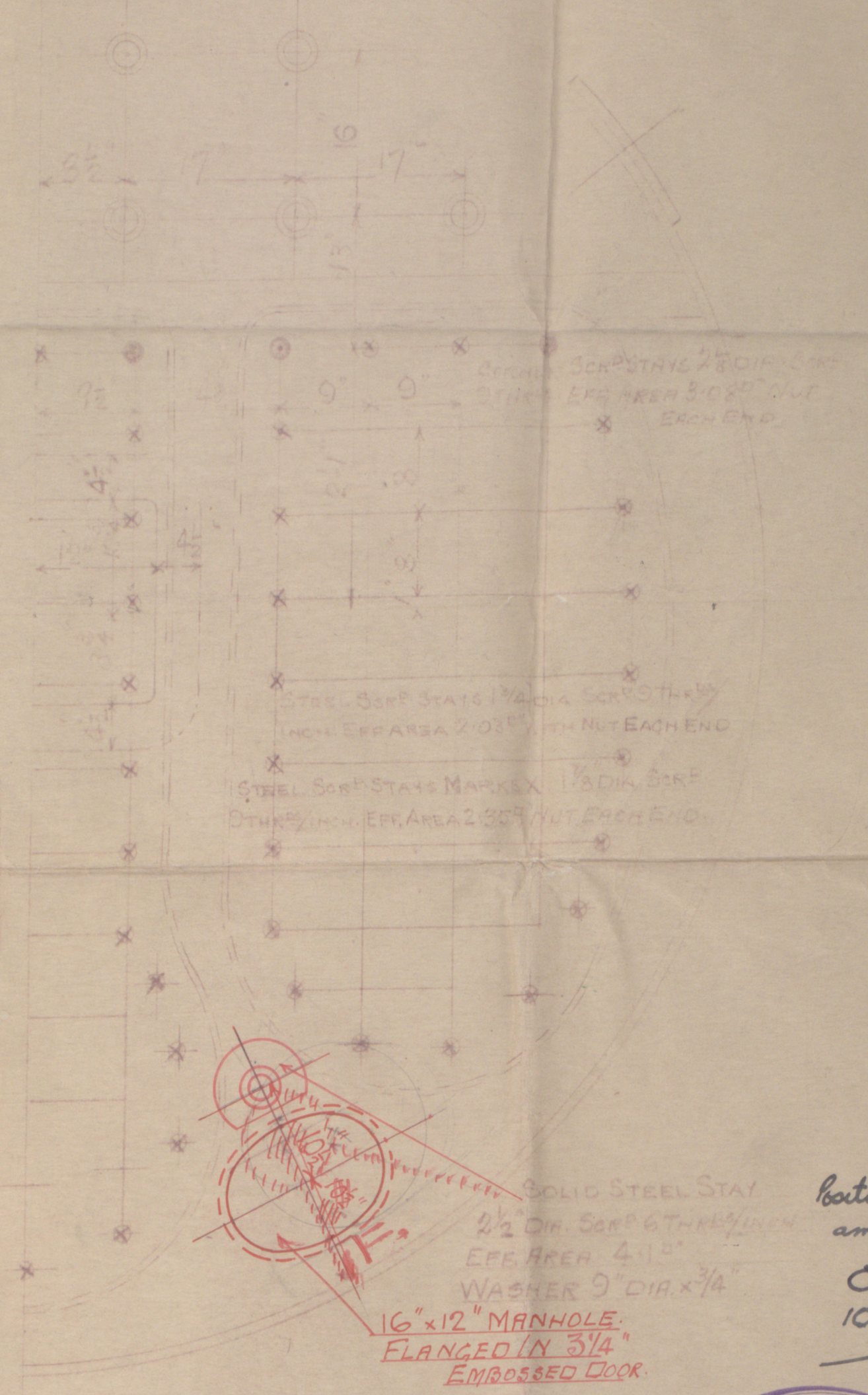
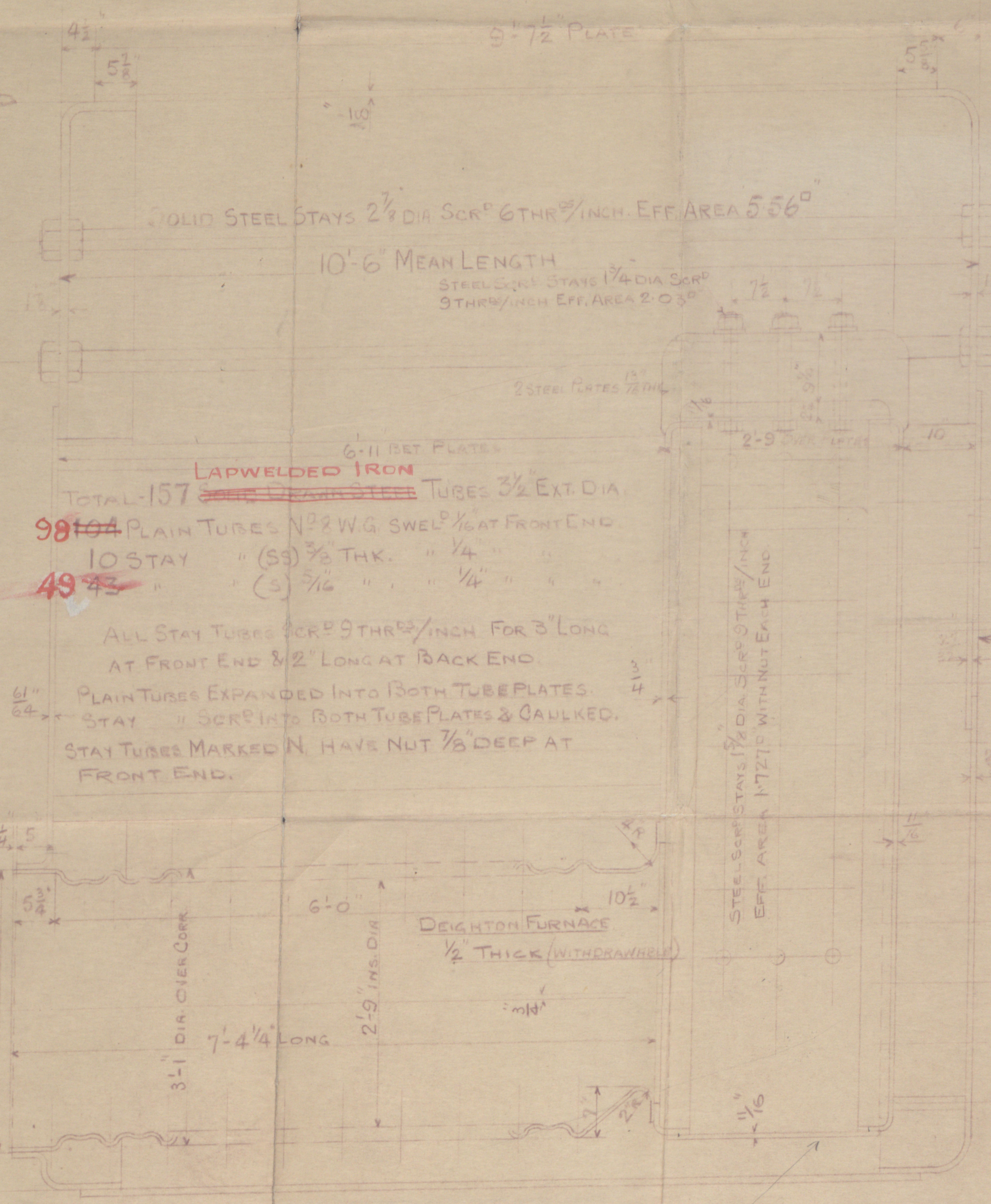
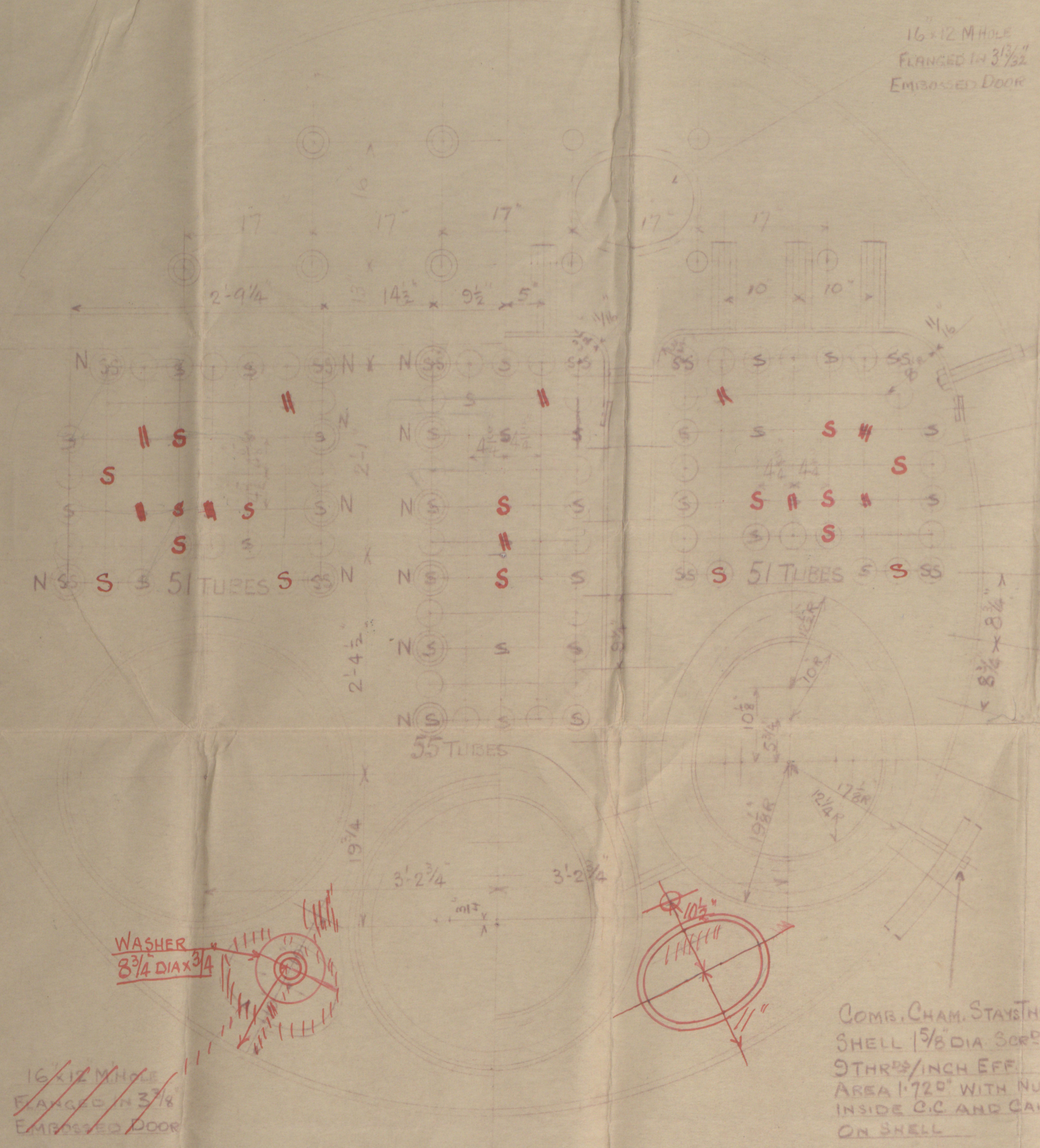
COMB. CHAM STAYS THRO
B STAYS MARKED X

TENSILE STRENGTH OF MATERIALS

SHELL & BUTT STRAPS	29 TO 33 TONS
PLATES FOR FLANGING	26 TO 30 "
FURNACES	26 TO 30 "
GIRDERS	28 TO 32 "
LONGITUDINAL STAYS	28 TO 32 "
SCRP STAYS	26 TO 30 "



HEATING SURFACE	50 FT
TUBES	995
FURNACES	109
COMB. CHAM	193
TOTAL	1297
G.A WITH 3 1/2" BARS	45
RATIO G.A. H.S.	1:28.5



W.P. = 210 LBS/SQ IN
TEST PRESS. 365 LBS/SQ IN
TO PASS LLOYD'S SURVEY & FRENCH LAW REQUIREMENTS

ONE OFF

Spacer plates fitted increased in
thickness to 13/16" at bottom

Nº 537
AUXY BOILER
SCALE 1" = ONE FOOT



Location of manhole
amended.
cm.
10/12/31

Plan of Auxiliary Rules

Miss A. Stephen Leno

s/s No 537

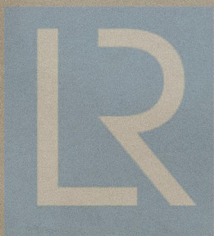
W.P. 21048 "5"

H.S. 1297 f

s/s "Gazcon"

GLASGOW REPORT No. 52703

W41-0037



© 2019

Lloyd's Register
Foundation