

Feb 1032

FEB 18 1938 28521

Index No.
(For London Office only).

Lloyd's Register of Shipping.

SURVEYS FOR FREEBOARD.

(CONDITIONS OF ASSIGNMENT.)

Ship's Name "HERPORT" ex "FAIRPORT"

Port of Survey Hull

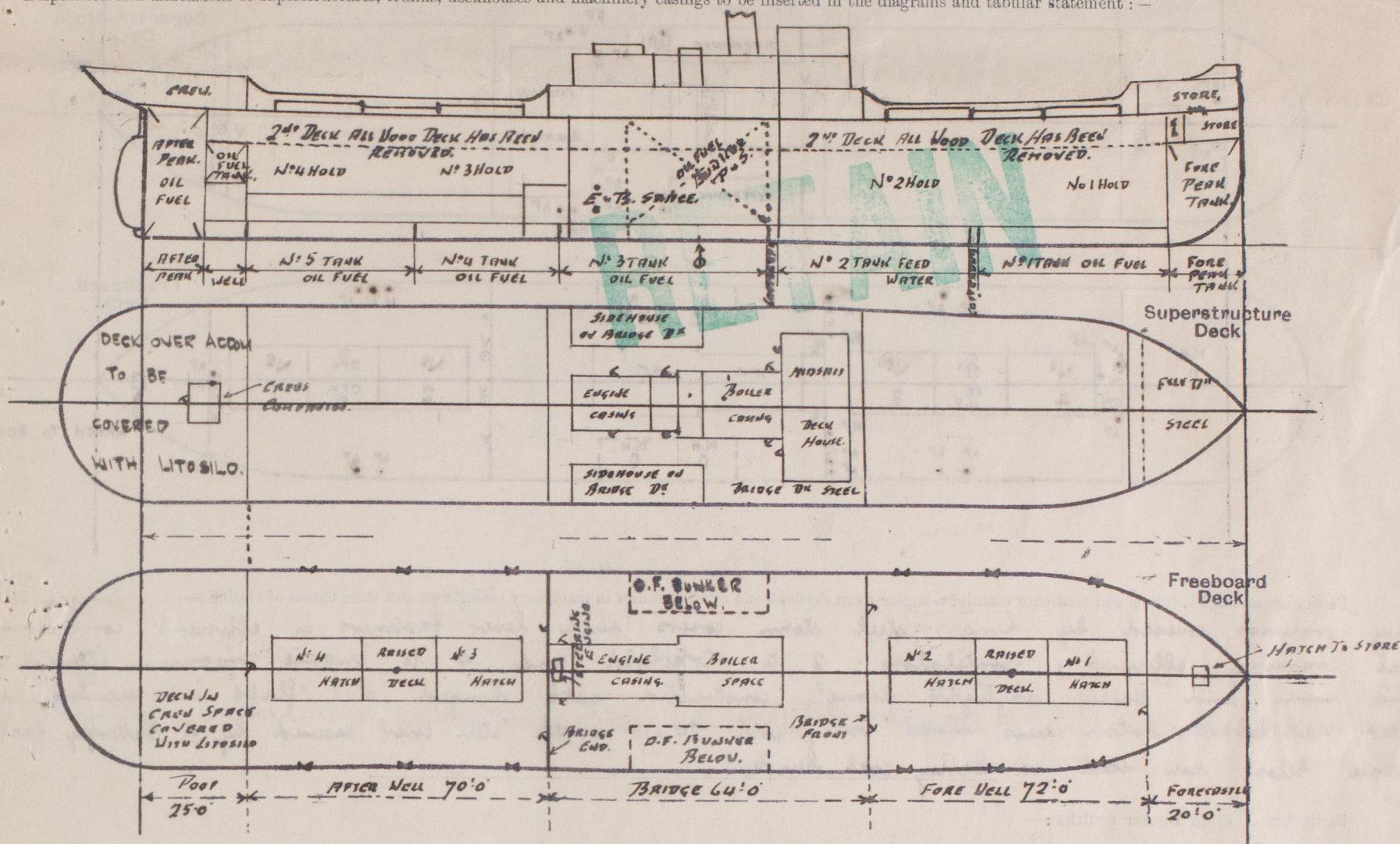
Official Number 166374

Surveyor's Signature R. S. Piddington & M. H. Engledow

Nationality and Port of Registry British, London.

Date of Survey 24/1/38 and subsequently

Disposition and dimensions of superstructures, trunks, deckhouses and machinery casings to be inserted in the diagrams and tabular statement:—



Particulars of Superstructures, Trunks, Casings, Deckhouses.

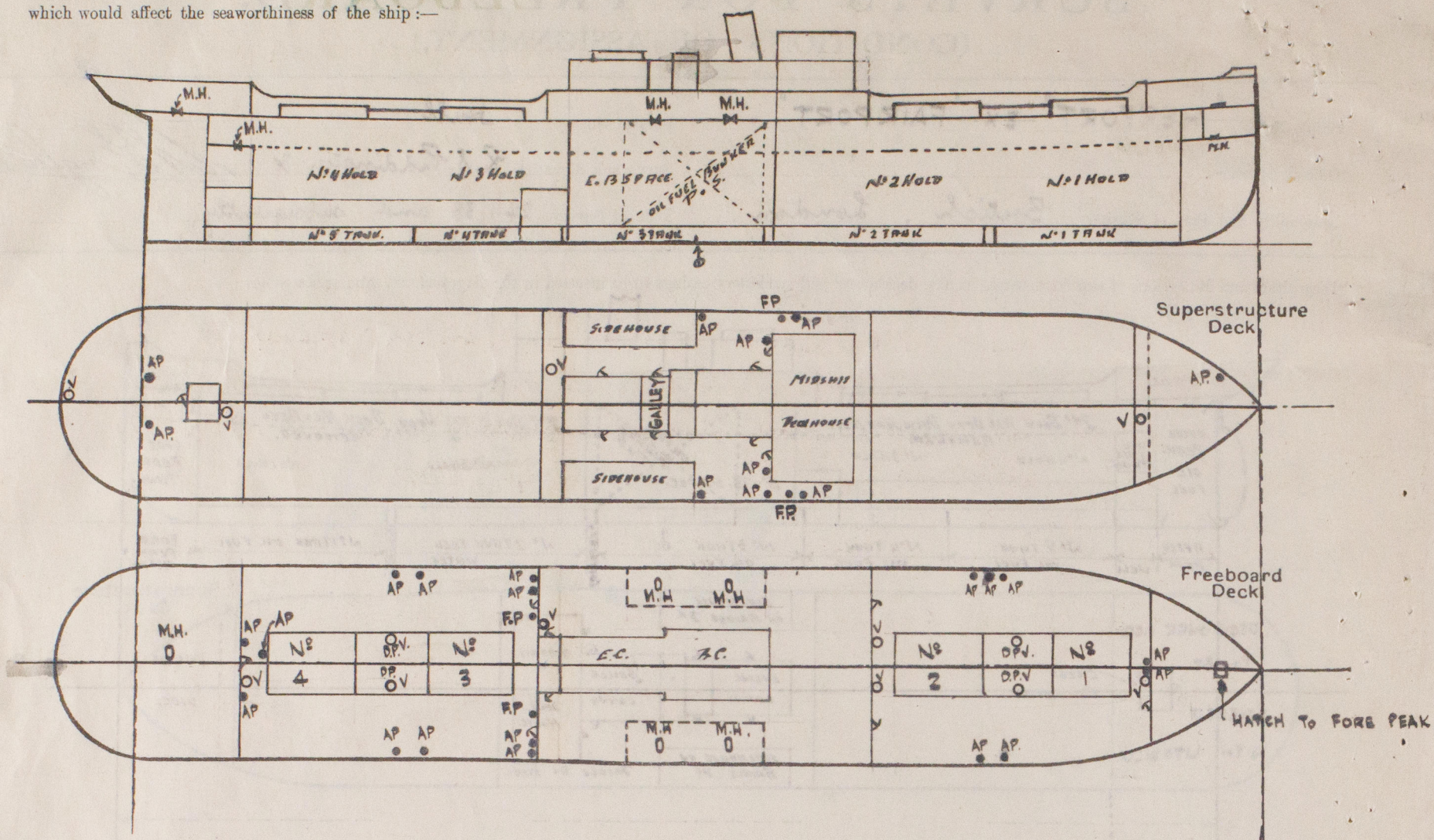
	Coaming	Plating	Stiffeners	Spacing	End Attachments of Stiffeners	Size of Openings	Height of Sills	Height of Casings
Poop Bulkhead	✓	5/16	5" x 3" x 45' L	30"	✓	1 @ 4'7" x 24"	15 1/2"	7'0"
Raised Quarter Deck Bulkhead	✓	✓	✓	✓	✓	✓	✓	✓
Bridge, After Bulkhead	✓	5/16	4" x 3" x 40' L	28" to 33"	✓	{ 1 @ 4'9" x 36" 1 @ 4'0" x 24"	18" 24"	7'0"
Bridge, Forward Bulkhead	✓	1/4"	7" x 3 1/2" x 40' L	30"	Bkls at top & bottom	2 @ 4'9" x 36"	19"	7'0"
Forecastle Bulkhead	✓	1/4"	5" x 3" x 50' L	27" to 36"	✓	1 @ 4'1" x 32"	18"	7'0"
Trunk, Aft	✓	✓	✓	✓	✓	✓	✓	✓
Trunk, Forward	✓	✓	✓	✓	✓	✓	✓	✓
Exposed Machinery Casings on Freeboard or Raised Quarter Decks	✓	✓	✓	✓	✓	✓	✓	✓
Exposed Machinery Casings on Superstructure Decks	✓	3/32"	3" x 3" x 40' L	29" to 33"	Bkls at top	{ 2 @ 4'9" x 24" 2 @ 4'6" x 24"	15" 18"	7'0"
Machinery Casings within Superstructures not fitted with Class I Closing Appliances	40"	3/32"	3" x 3" x 40' L	29" to 33"	✓	{ 1 @ 4'6" x 27" 1 @ 4'8" x 24"	20" 16"	7'0"
Deckhouses on Flush Deck Ships	✓	✓	✓	✓	✓	✓	✓	✓

Particulars of Closing Appliances (state if capable of being manipulated from both sides).

Poop Bulkhead	Hinged steel door with lever handles operated from both sides. ✓
Raised Quarter Deck Bulkhead	✓
Bridge, After Bulkhead	2 Hinged steel doors with lever handles operated from both sides. ✓
Bridge, Forward Bulkhead	2 Hinged steel doors with 2 @ 4" x 3" x 40' L stiffeners, lever handles operated from both sides. ✓
Forecastle Bulkhead	Hinged steel door with lever handles operated from both sides. ✓
Exposed Machinery Casings on Freeboard or Raised Quarter Decks	✓
Exposed Machinery Casings on Superstructure Decks	4 Hinged steel doors with spring locks operated from both sides. ✓
Machinery Casings within Superstructures not fitted with Class I Closing Appliances	2 Hinged steel doors with lever handles operated from both sides. ✓
Deckhouses on Flush Deck Ships	✓

PARTICULARS OF PROTECTION TO OPENINGS, ETC.

The following diagrams should be used to indicate the positions of cargo and coaling hatchways, gangway, cargo and coaling ports, ventilators, companionways, etc., which would affect the seaworthiness of the ship:-



Particulars of fiddley, funnel and ventilator coamings, engine room skylight and other openings in machinery casing tops and their means of closing:-

Fiddley gratings covered by hinged steel stern covers with lever fasteners in efficient condition. Funnel coaming efficient, ventilators: 2 to stokehold and 4 to engine room in efficient condition. Engine room and galley skylights strongly constructed with hinged steel flaps and securing arrangements. Forward saddleback hatch now plated over, with 24" x 18" scuttle steel cover secured by 4 butterfly fasteners to space below now used as galley coal bunker.

Particulars of Flush Bunker Scuttles:-

None.

Particulars of Companionways:-

Steel house on poop deck with 4'8" x 24" wood door to crews quarters below, door 1 1/2" thick fitted with spring lock operated both sides, sill 16".

Particulars of Ventilators in exposed positions on freeboard and superstructure decks:-

	HT.	DIA.	THICK.	
Stoke deck to No 1 hold	36" x 15"	35"	thick	1 off
Upper " " No 1 & 2	D.P.V. x 18" x 50"			2 off
" " " No 2	10'6" x 15" x 40"			2 off
Bridge " " No 3	12'0" x 15" x 40"			1 off
Upper " " No 3 & 4	D.P.V. x 18" x 50"			2 off
" " " No 4	10'6" x 15" x 40"			1 off
Poop " " Funnel	2'6" x 15" x 40"			1 off
" " Accom.	3'6" x 10" x 35"			1 off

A number of vents to accommodation in Poop Space as reqd by B.O.T. are being fitted coamings 30" x 6" x 33". All ventilators will have wood plugs and canvas covers.

Particulars of Air Pipes in exposed positions on freeboard, raised quarter, or superstructure decks:-

		HT.	DIA.	THICK.	
Stoke deck to Fore Peak tank	G.N. 3" dia 18" from deck to mouth				4'6"
Upper " " No 1 D.B.T. fore end. P.S. "	3" x 4'6"				
" " " after end. P.S. "	3" x 2'3"				
" " " Coff. between No 1 & 2. P. "	3" x 2'3"				
" " " No 2 D.B.T. fore end. P.S. "	3" x 2'3"				
Bridge " " No 2 " after end. P.S. "	3" x 2'3"				
" " " No 3 " fore end. P.S. "	3" x 2'3"				
" " " Coff. between No 2 & 3. 5 "	3" x 2'3"				
" " " Oil fuel bunkers. P.S. "	4" x 2'6"				
Upper deck to No 3 D.B.T. after end. P.S. G.N. 3" dia from deck to mouth					
" " " No 4 " fore " P.S. G.N. 3" x 4'6"					
" " " No 4 " after " P.S. G.N. 3" x 2'3"					
" " " No 5 " fore " P.S. G.N. 3" x 2'3"					
" " " Deep tank aft. " P.S. G.N. 4" x 4'6"					
Poop " " Aft. Peak Tank - P.S. G.N. 3" x 2'3"					
Bridge " " No D.B.T. 2" dia filling pipes P.S. 2'3"					
Upper " " No D.B.T. " " P.S. 2'3"					

Air pipes to O.F. tanks fitted with gauge. Air pipes to water tanks fitted with wood plugs, filling pipes fitted with screwed caps.

Rpt. C. 11 (Contd.)

Index No. 28521.

Lloyd's Register of Shipping.

Ship's Name

"HERPORT"

Official No. 166374

Memorandum of alterations reported since ship was surveyed for assignment of Load Lines

in

JAN., 1938.

Two manholes have been opened on bridge deck, one on port side and one on starboard side, for the purpose of trimming bunker coal in bridge space. These manholes are closed by means of steel covering plates bolted to the deck. Bolts spaced watertight pitch and cover plates properly jointed and made watertight

(1st. Mar., 1939).

RETAIN

25 APR 1939

RETAIN

Particulars of Gangway Cargo and Coaling Ports:—

None. /

Herport

FEB 18 1938

Particulars of Scuppers and Sanitary Discharge Pipes:—

Fore well scuppers cut through gunwale bar 2 port and 2 starboard. /
 Aft " " " " " 3 " " 3 " " /
 San. Discharge pipes from W.C.s on Poop Deck led through 1-4" S.V. discharging 1'-6" below freeboard deck p.s. ✓
 " " " " " Bridge " " " 1-4" S.V. " 6'-6" " " " S.S. ✓
 " " " " " Upper " (aft) " " 1-4" S.V. " alt 1'-0" above " " p.s. ✓

Particulars of Side Scuttles:—

Fore side 1 p.s. & 2 S.S. 11" dia strongly constructed and fitted with deadlights. ✓
 Poop " 8 p.s. & 7 S.S. 9" " " " " " " " " " ✓

Vertical distance of Sill of lowest Side Scuttle above top of keel ✓

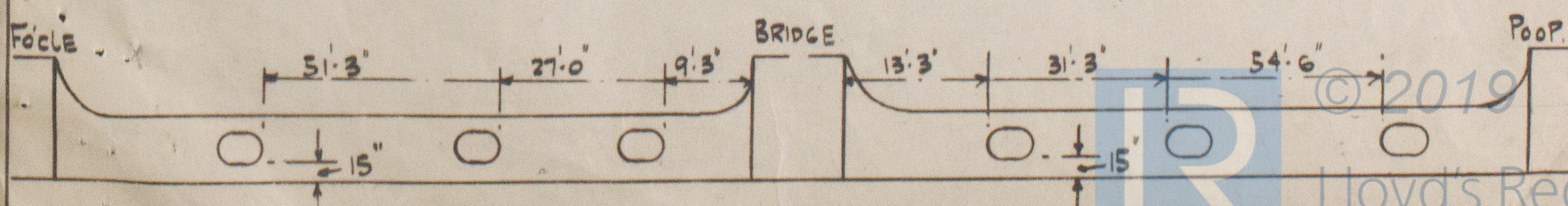
Particulars of Guard Rails:—

Fore deck open rails, 3'-3", 2 rods, stanchions spaced about 4'-6" apart. ✓
 Poop " " " " 3'-3", 2 " " " " " " " " " ✓
 Bridge " steel bulwarks, 3'-6", wood top rail, high plate stays spaced about 4'-6" apart. ✓
 Fore and after wells steel bulwarks 3'-6" high, strongly constructed, top rail 6" x 3 1/2" plain angle, stays 7" x 3 1/2" x 9/20" plain angles spaced 6'-0" apart. ✓

Particulars of Gangways, Lifelines, etc.:—

Lifelines and eyeplates on Poop, Bridge & Fore bulkheads to provide in forward & after wells.
Provision for lifelines in accordance with the regulations

Particulars of Freeing Arrangements.						
	Length of Bulwark	Height of Bulwark	Size of Freeing Ports	Number each side	Area each side	Rule area each side
After Well	70'-0"	3'-6"	42" x 18" oval	3	14.31 sq. ft.	14.0 sq. ft.
Forward Well	72'-0" 69'-0"	3'-6"	42" x 18" oval	3	14.31 sq. ft.	13.8 sq. ft.
State position of each freeing port { After Well:— (F. and A. position and height above deck edge) { Forward Well:—						
State whether the freeing ports are fitted with shutters, bars, or rails, and give particulars of such:— 4 vertical bars at each freeing port. ✓						
Additional area where sheer is less than standard.						



PARTICULARS OF PROTECTION TO OPENINGS, ETC.

HATCHWAYS ON FREEBOARD AND SUPERSTRUCTURE DECKS.									
Description of Hatchway	No 1	No 2	No 3	No 4	HATCH TO FORE PEAK	MANHOLE TO AFTER PEAK	MANHOLE TO C.P. BUNKERS	MANHOLE TO DEEP TANK AFT	
Dimensions of Hatchway	22' x 10'	22' x 18'	22' x 18'	22' x 18'	20' x 20'	17' x 12'	16' x 12'	18' x 12'	
COAMINGS	Height above Deck ... 3' 6" Thickness { Sides ... 1/4" Ends ... 1/4" Stiffeners ... 7/8" x 35" Brackets, Stays ... 3 @ 6" x 3" x 45"				4' x 3' x 1/16" angle 4" VERT.	None	None	None	
HATCH BEAMS	Number ... 4 Spacing ... 4'-5" Scantling and Sketch ... 37" x 16" to 15" at ends Bearing Surface ... 3 1/2"				✓	✓	✓	✓	
FORE AND AFTERS	Number ... Spacing ... Unsupported Lengths ... Scantling* and Sketch ... Bearing Surface ...	None.			✓	✓	✓	✓	
HATCH COVERS	Material ... W.W. Thickness ... 2 1/2" How fitted ... F & A Bearing Surface ... 2 1/2"				Hinged 1/4" steel cover	Bolts 3/8" steel cover	Bolts 3/8" steel cover	Bolts 3/8" steel cover	
Spacing of Cleats	22"				2 butterfly fasteners	studs spaced 3" apart	studs spaced 4 1/2" apart	studs spaced 6" apart	
Number of Tarpaulins	2								

*Are wood fore and afters steel shod at all bearing surfaces? None.
 Are battens and wedges efficient and in good condition? Yes.
 Are tarpaulins in good condition and in accordance with rule requirements? ~~Yes~~ to be examined.
 Are lashings provided in accordance with rule requirements? ~~Yes~~ to be provided.

Particulars of any special features:-

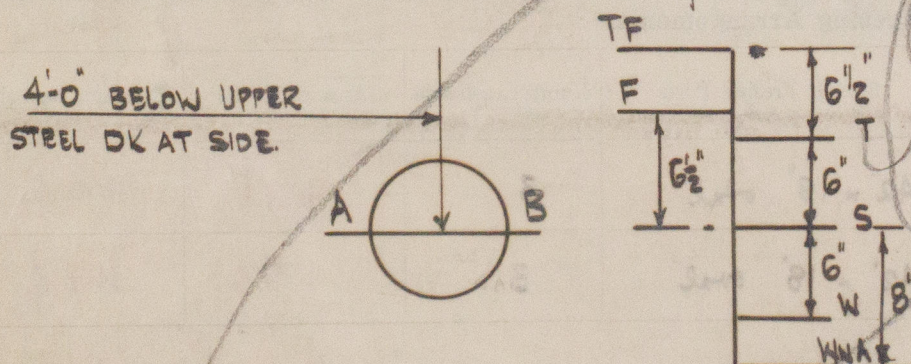
This vessel is undergoing S.S. 2nd N^o 3 for Re-classification, and repairs as recommended are being effected to shell, decks, casings, hatchways, ventilators, skylights, sidelights, guard rails bulwarks, steering gear etc etc to place the vessel in an efficient condition.

The Owner's Representative states the internal examination of Nos 1, 2, 3, 4 + 5 double bottom tanks and After Peak tank will be carried out in Turkey. also testing of After Peak and aft Deep Tanks.

Endorsement at first survey and at surveys for renewal of Certificate:-

The fittings and appliances are in accordance with the particulars shown on this form (or as now modified) and are in good condition.

The load line marks at present on the vessel are as below:-



© 2019
Lloyd's Register
Foundation