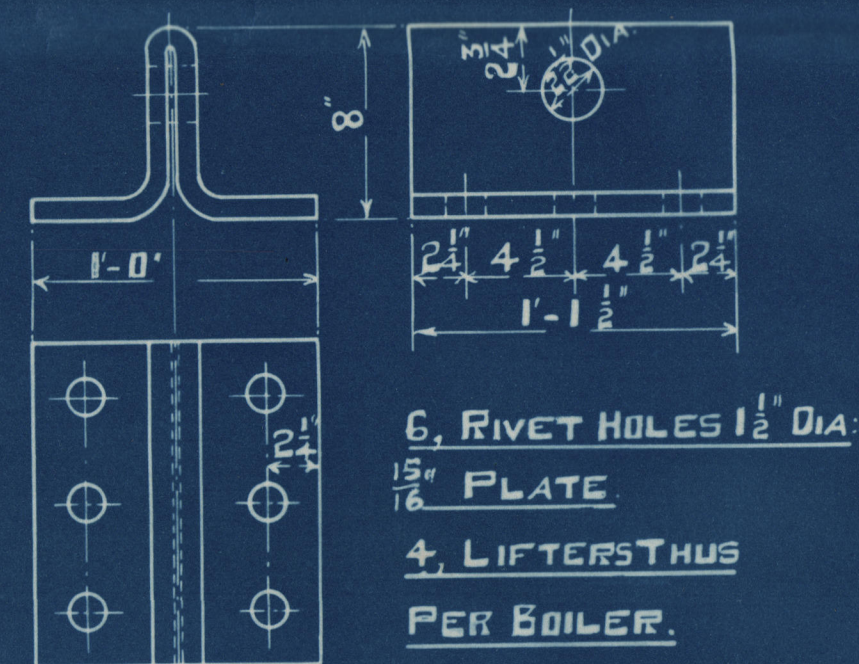
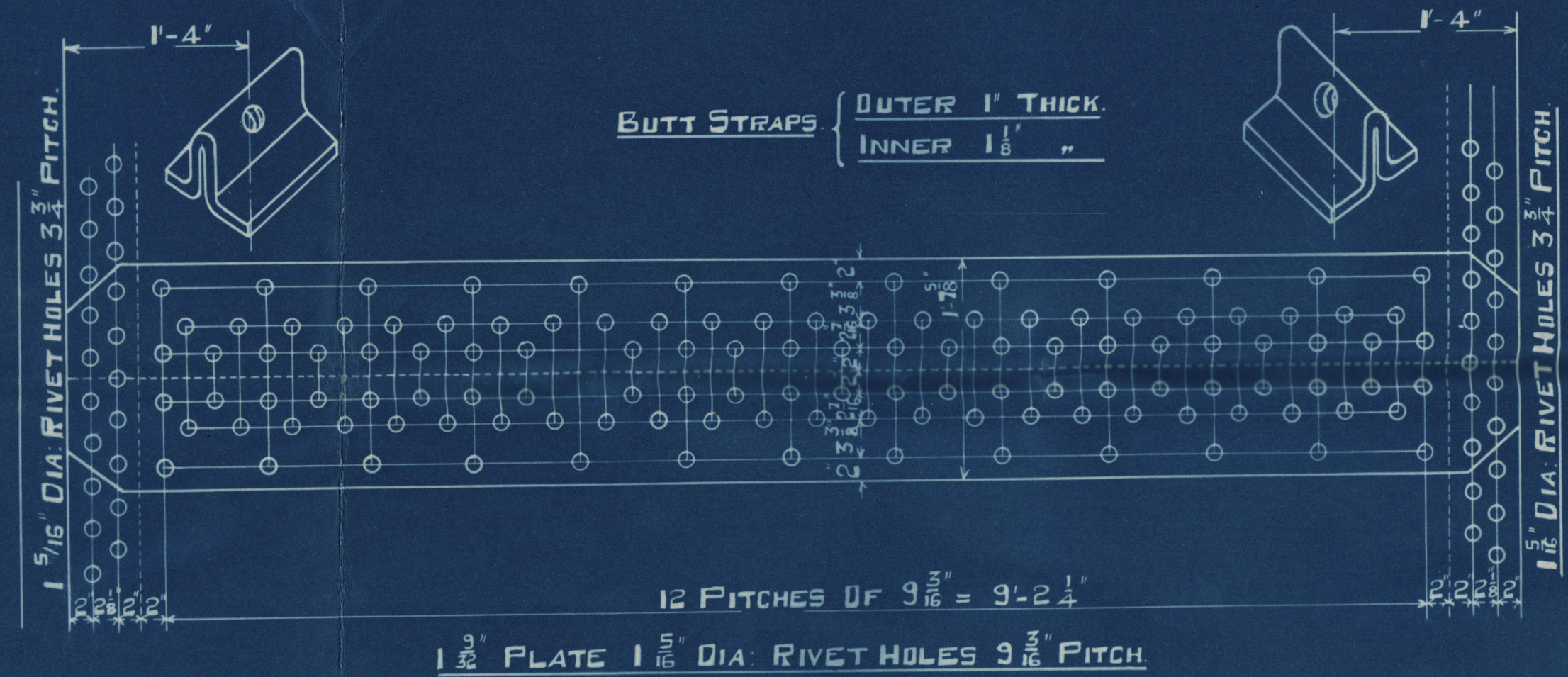


J. L.
21:9:31.

SCALE : — 1, INCH = 1 FOOT.

APPROVED BY LEVISO. 10:0:31


$$\underline{\text{SHELL W.P.}} \quad \frac{(41.2) \times 29 \times 85.47}{2.75 \times 159.44} = \underline{220.6 \text{ LBS./Q'}}$$


MANHOLE 16" x 12"
SOLE IN SHELL 1'-8⁵/₈" x 1'-4⁵/₈"
COMPENSATING RING 3'-2¹/₂" x 2'-10¹/₂" x 1'-16⁵/₈"
34, RIVET HOLES 1¹/₂" DIA:



E. OF MIDDLE

6 THREADS / INCH

2 PLATES 1/8" THICK BETWEEN DIA RIVETS 1 1/4" FERRULES

7-9" OVER TUBE PLATES

28	SEAMLESS STEEL STAY TUBES 2 1/2" EXT DIA 7/8" THICK (WITH NUTS) MARKED SS
28	" " " " 2 1/2" " " 7/8" " MARKED SS
25	" " " " 2 1/2" " " 7/8" " S.
228	" " PLAIN " 2 1/2" " " 7/8" L.S.G. THICK
303	TOTAL NO OF TUBES

PLAIN TUBES SWELLED 1/8" AT FRONT ENDS
STAY TUBES SWELLED 1/4" " "
STAY TUBES SCREWED INTO BOTH TUBE PLATES 3 THREADS / INCH.
RETARDERS FITTED IN ALL TUBES

2 DIA SCREWED STAYS 3 THREADS / INCH FITTED WITH NUTS. 1" DEEP INSIDE CC ONLY

2 1/8" DIA RIVET HOLES 2 1/8" PITCH

2 1/8" DIA RIVET HOLES 2 1/8" PITCH

2 1/8" DIA RIVET HOLES 2 1/8" PITCH

GRATE LONG 50 FT.

DEIGHTON SECTION FURNACES.
FURNACES TRIED TO BE TRULY CYLINDRICAL & MADE TO WITHDRAW ON GOWLEY STEPHEN PLAN.
TENSILE STRENGTH OF FURNACE PLATING TO BE BETWEEN 26 x 30 TONS PER SQ. INCH.

10'-7 1/2" CIRCUMFERENCE

10'-6 1/2"

11'-6" TOTAL LENGTH.

STAYS MARKED $\text{O} 2\frac{1}{8}$ " DIA: 9 THREADS/INCH
ALL OTHER STAYS 2" " 9 " "
ALL SCREWED STAYS IN C.C. BACKS FITTED WITH NUTS AT BOTH ENDS
2" NUTS 1" DEEP. $2\frac{1}{8}$ " NUTS $1\frac{1}{8}$ " DEEP.

LLOYD'S SURVEY.

HEATING SURFACE ON TUBES =	1567	SQ. FT.
" " ELSEWHERE =	383	" "
TOTAL =	1950	" "

WORKING PRESSURE = 220 LBS. PER SQ. INCH.
TEST " " " "

ALL PLATES, RIVETS & LONGITUDINAL STAYS OF STEEL

SCREWED STAYS OF TESTED IRON.

SMOKE TUBES OF SEAMLESS STEEL.

TENSILE STRENGTH OF SHELL PLATES, BUTT STRAPS &

GIRDER PLATES 29 TO 33 TONS PER SQ. INCH.

TENSILE STRENGTH OF ALL OTHER PLATES 26 TO 30 TONS/0"

91 92 93 **LONGITUDINAL STAYS 28 TO 32** 94 95

SCREWED STAYS 2 1/2 TONS/8" MINIMUM

ALL HOLES DRILLED IN PLACE AFTER PLATES ARE BENT.

TRACING Nº 750.

CONTRACT 2787

2788 20:10:37

N.E.M.E.C^o L^D

C. No 2^y88.

AUXILIARY BOILER.

1. OFF. ✓

W. P. 220 LBS.

HAWTHORNE LESLIE C^o

No 586.

(DUPLICATE No 2^y88)

SS "HARLES DEIN
NEWCASTLE ON TYNE.

Report No. 88955.

W405-0255



© 2019

Lloyd's Register
Foundation