

Nº 586. MIDSHIP SECTION.

TO CLASS+100 A.I. AT LLOYDS.

DIMENSIONS 425'-0" B.P. x 56'-0" B.M. x 28'-9" To U.D.K. x 37'-9" To BRIDGE DECK.

SCALE 1/2" = FOOT.

THICKNESS SHOWN THUS \bigcirc INCLUDE OWNERS INCREASES.

NUMERALS

D = 28.75

L x D = 425 x 28.75 = 12219 = 1ST LONG⁺ NO.

L (D + D) = 425 (56 + 28.75) = 36019 = 2ND "

L = 28.75 - (3.82 x 24) = 24.85

D To UPPER DK = $\frac{425}{28.75} = 14.78$

D To BRIDGE = $\frac{425}{37.75} = 11.26$

Erections 82.1%

BRIDGE SIDE PLATING 1/2"
POOP 3/8"
FCL 42"

EQUIPMENT Nº

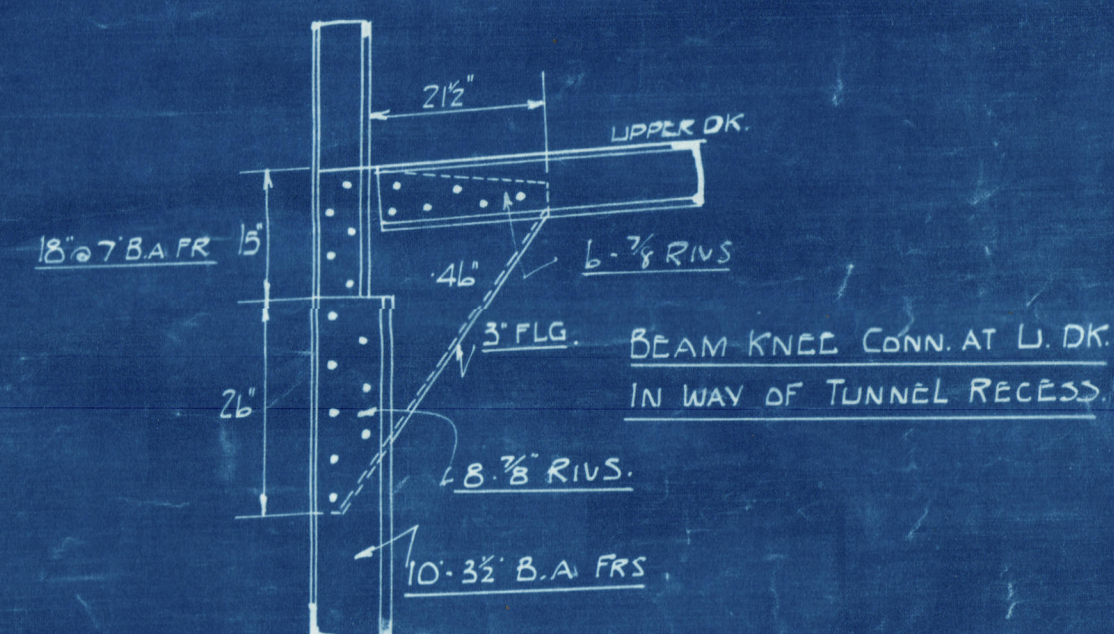
2 ND LONG ⁺ N°	=	36019
POOP & FCLT	785.85 x .75	= 500
LONG BRIDGE	270 x .9 x .75	= 1822
HOUSES ETC.	47.5 x .75 x .50	= 253
	2775 x .775 x .50	= 107
		38701

EQUIPMENT.

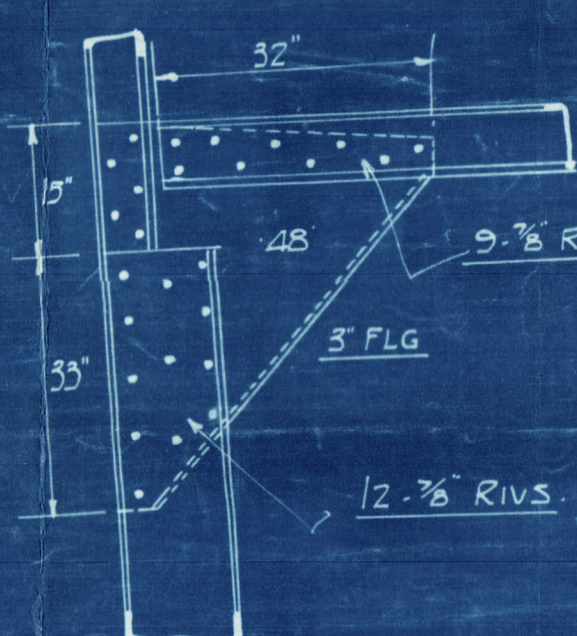
2 BOWER ANCHORS 18 cwt. EACH STOCKLESS	
1 " " 58 " " "	
1 STREAM " 19 " " EX. STOCK	
270 Fms. 2 1/2" STUD CHAIN CABLE	
20 " 5" STREAM STEEL WIRE	
120 " 4 1/4" TOWLINE SPECIAL FLEX. STEEL WIRE	
2 LENGTHS 90 Fms. EACH 2 1/2" STEEL WIRE HAWKERS	
2 " 90 " " 2 1/2" " " WARPS	
2 " 90 " " 3" " " "	
4 " 90 " " 7 MANILLA " "	

RIVETING TO RULE.

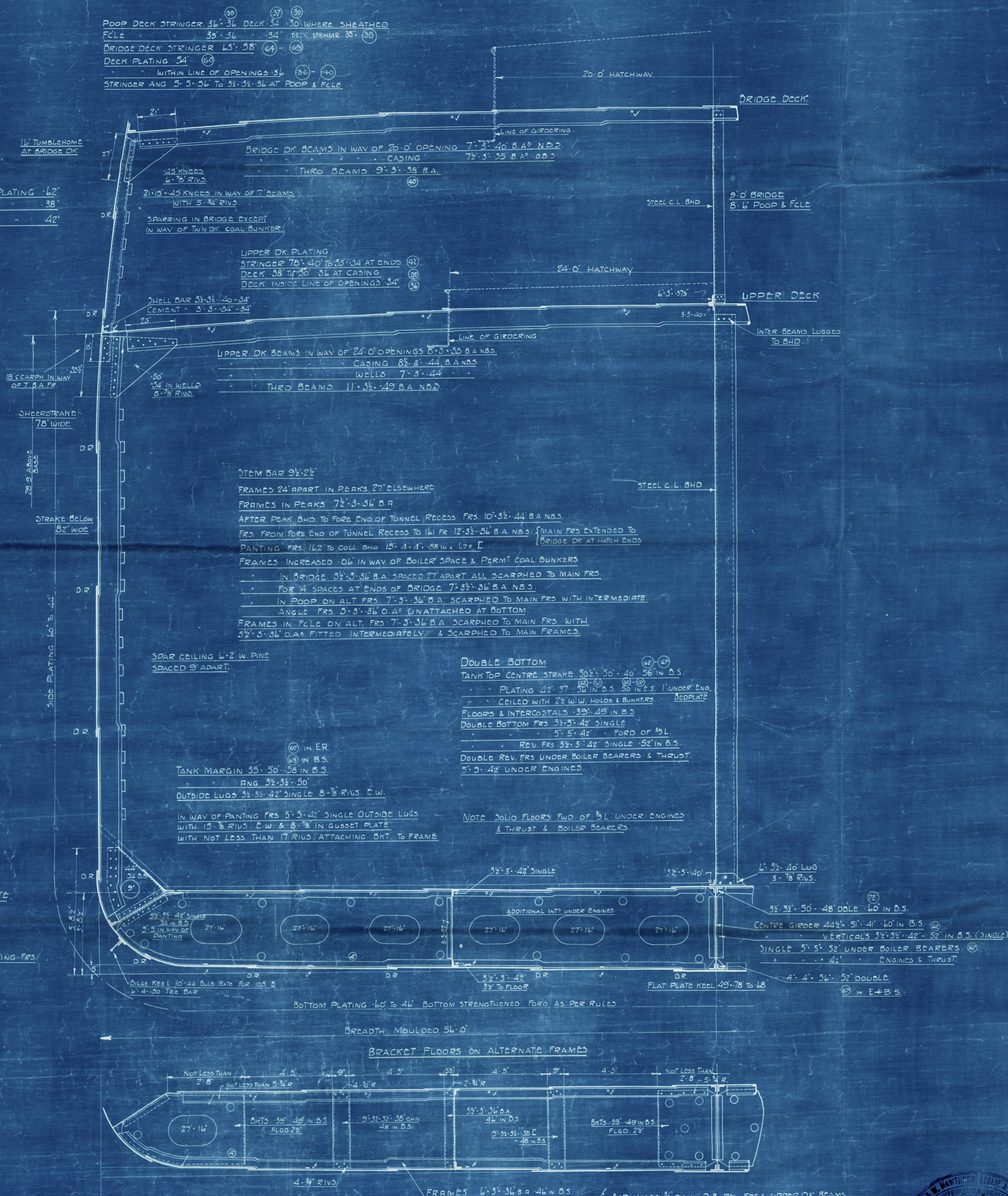
FOR STRENGTHENING IN WAY OF WELLS
SEE PROFILE & DECK.



PART EXPANSION SHEWING
RIVETING THRO. GUSSET PLATE.
SCALE 1" = FOOT



DEEP BEAM KNEES AT UPPER DECK
IN WAY OF PANTING FRAMES.



W 405-0254

S/s. Harlesden
Hawthorn Leslie & Co.
Midship Section of
Vessel as built. ✓

SS "HARLESDEN"
NEWCASTLE ON TYNE.
Report No. 889 SS.

RETAIN

RETAIN

W405-0254



© 2019

Lloyd's Register
Foundation