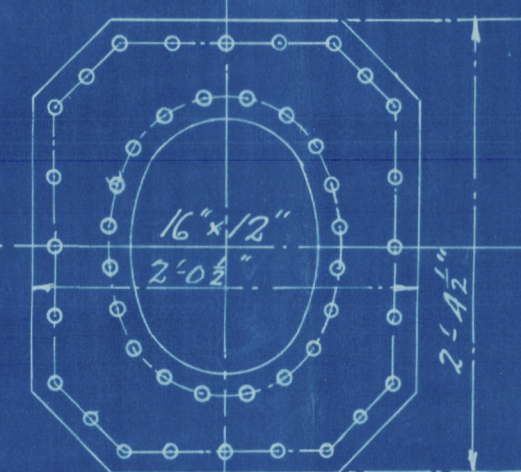
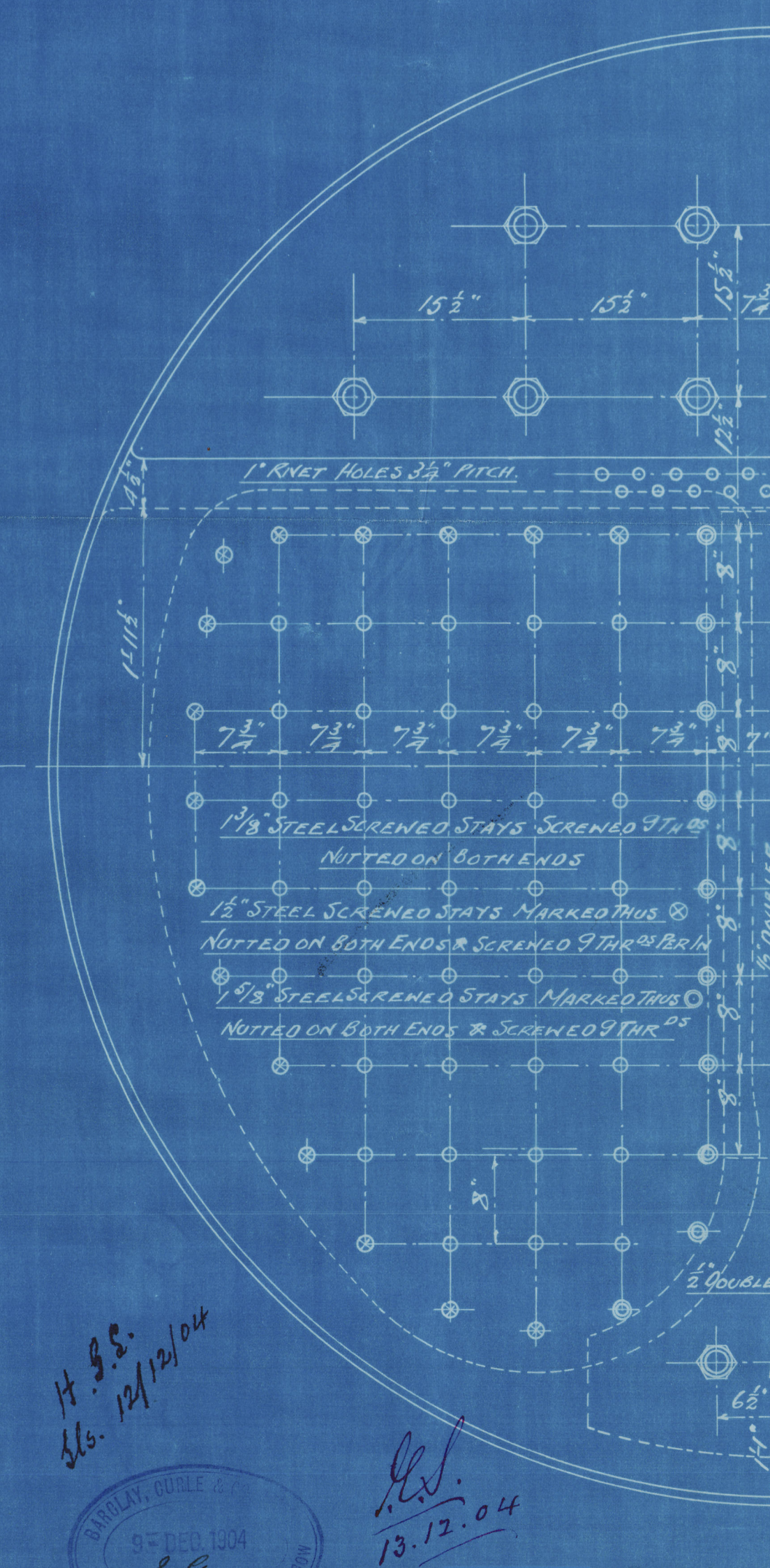
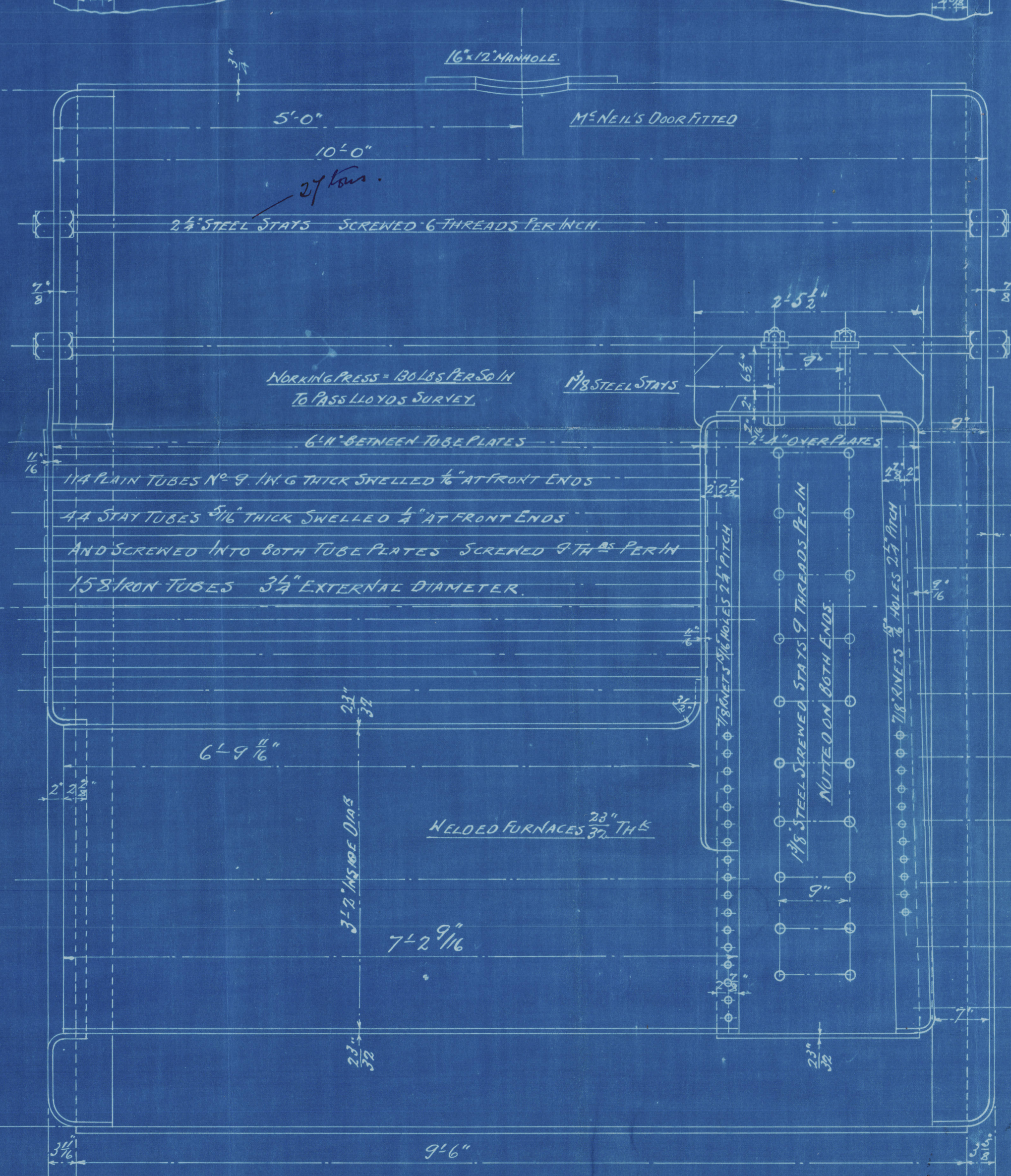
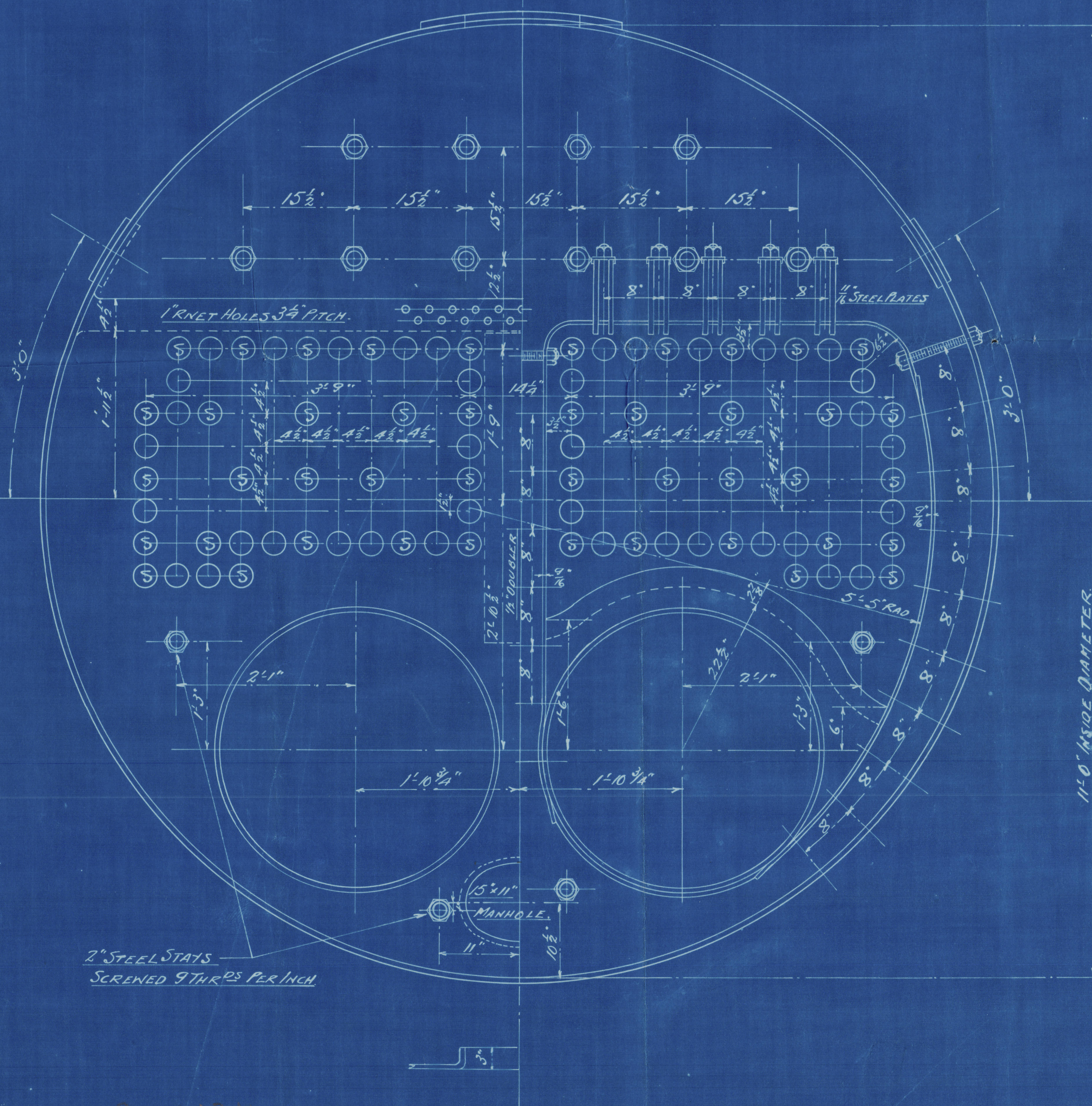
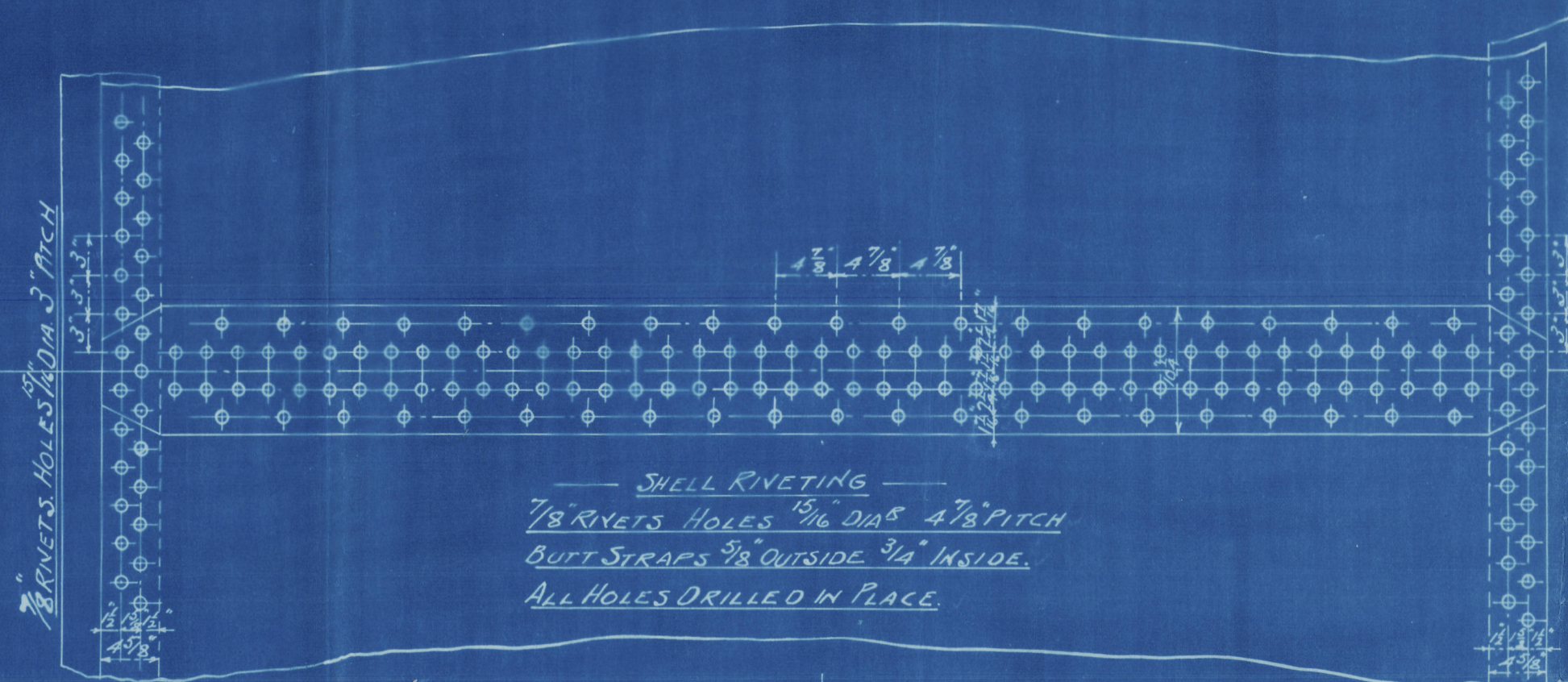


14:12:04

PARTICULARS	1. BOILER
HEATING SURFACE - TUBES	930 $\phi$
" " FURNACES	715 $\phi$
" " COMBUST <sup>n</sup> CHAMBER SIDES	672 $\phi$
" " BACKS	414 $\phi$
" " BACK TUBE PLATES	256 $\phi$
" " TOTAL	11357 $\phi$
GRATE AREA (5' 6" BARS)	34.8 $\phi$
RATIO HEATING SURFACE / GRATE AREA	32.6

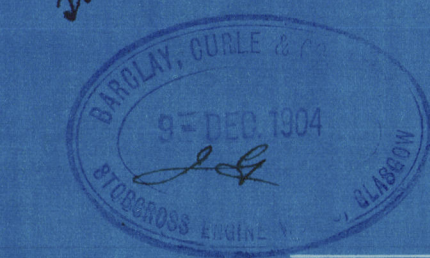


COMPENSATION RING  
FOR  
SHELL MANHOLE 7/8" THICK  
7/8" RIVETS. HOLES 15/16" DIA



TENSILE STRENGTH OF SHELL PLATES & BUTT STRAPS 28 1/2 TO 32 TONS  
1-OFF

H. S. S.  
SLS. 12/12/04



13.12.04

BOILER G. 2.  
SCALE 1" = 1 FT

W 403-0134



From BARCLAY, CURLE & CO., Ltd.

STOBECROSS ENGINE WORKS.

*Enclosure*

*Lloyd's*

2/2

M403-0134



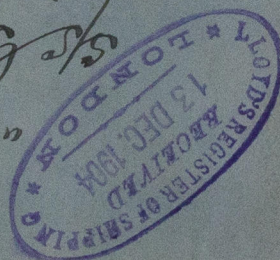
M403-0134



RETAIN

Lys. M4. No. 23109

*St. Guardian*



Barclay Curle & Co's  
Bk "G 2"



© 2020

Lloyd's Register  
Foundation