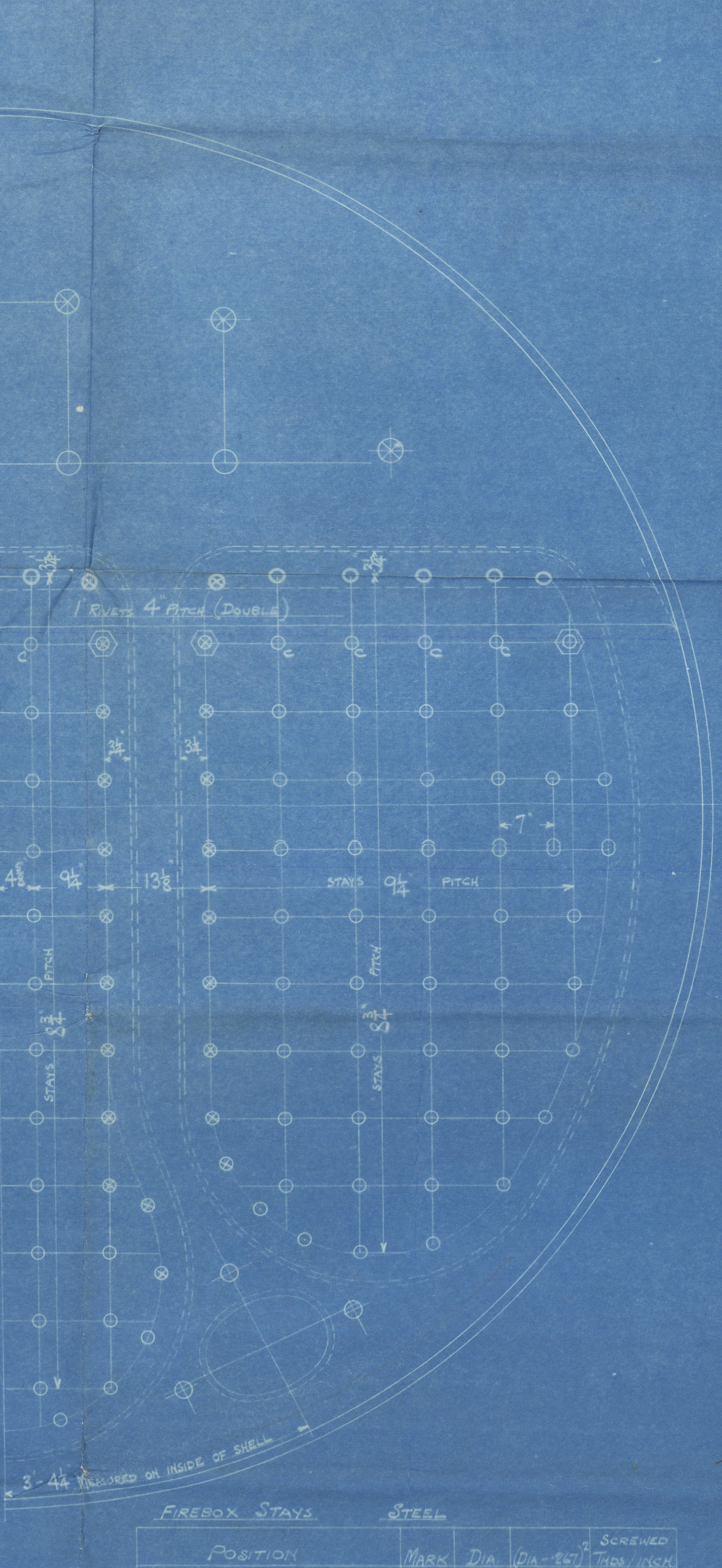
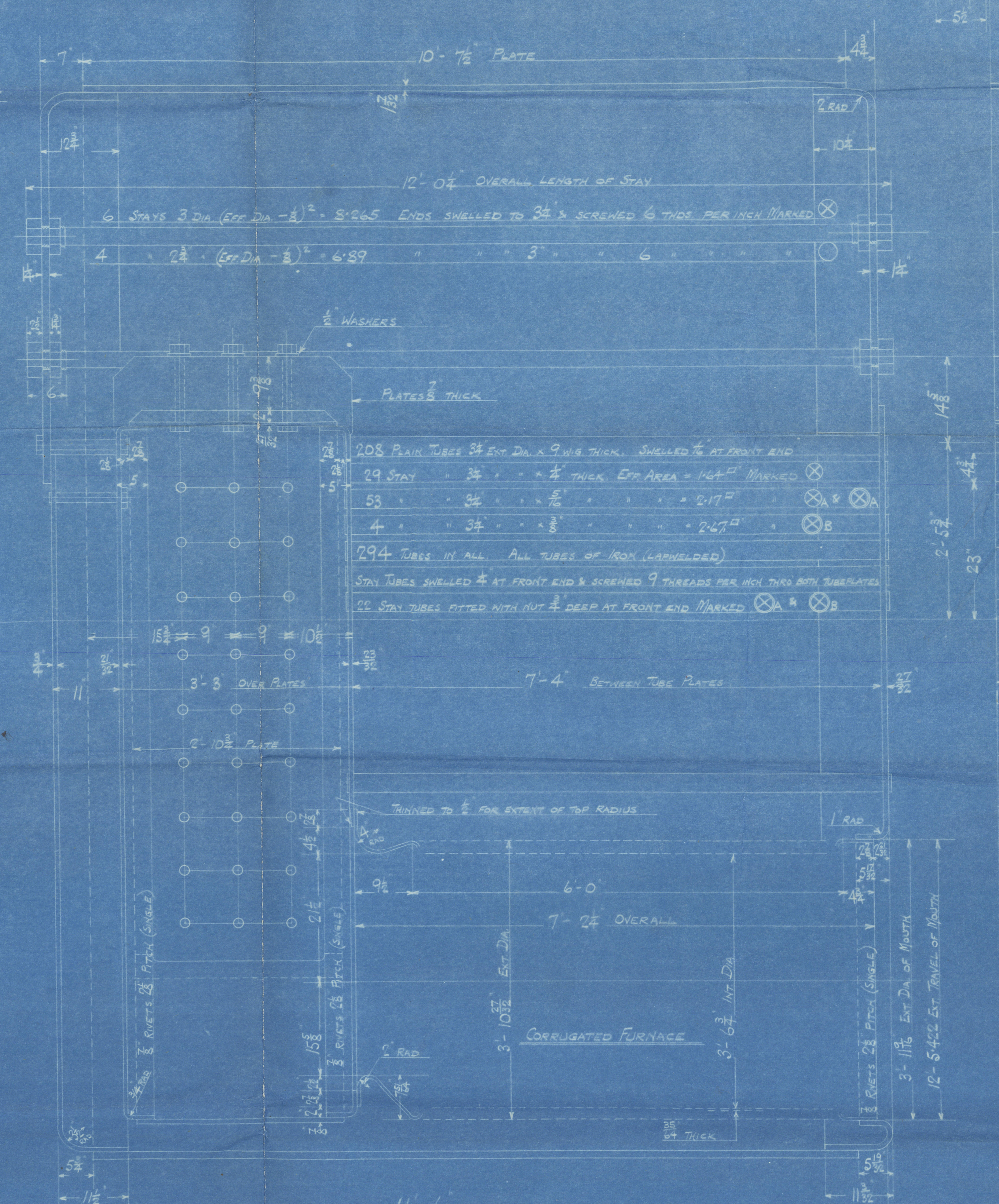
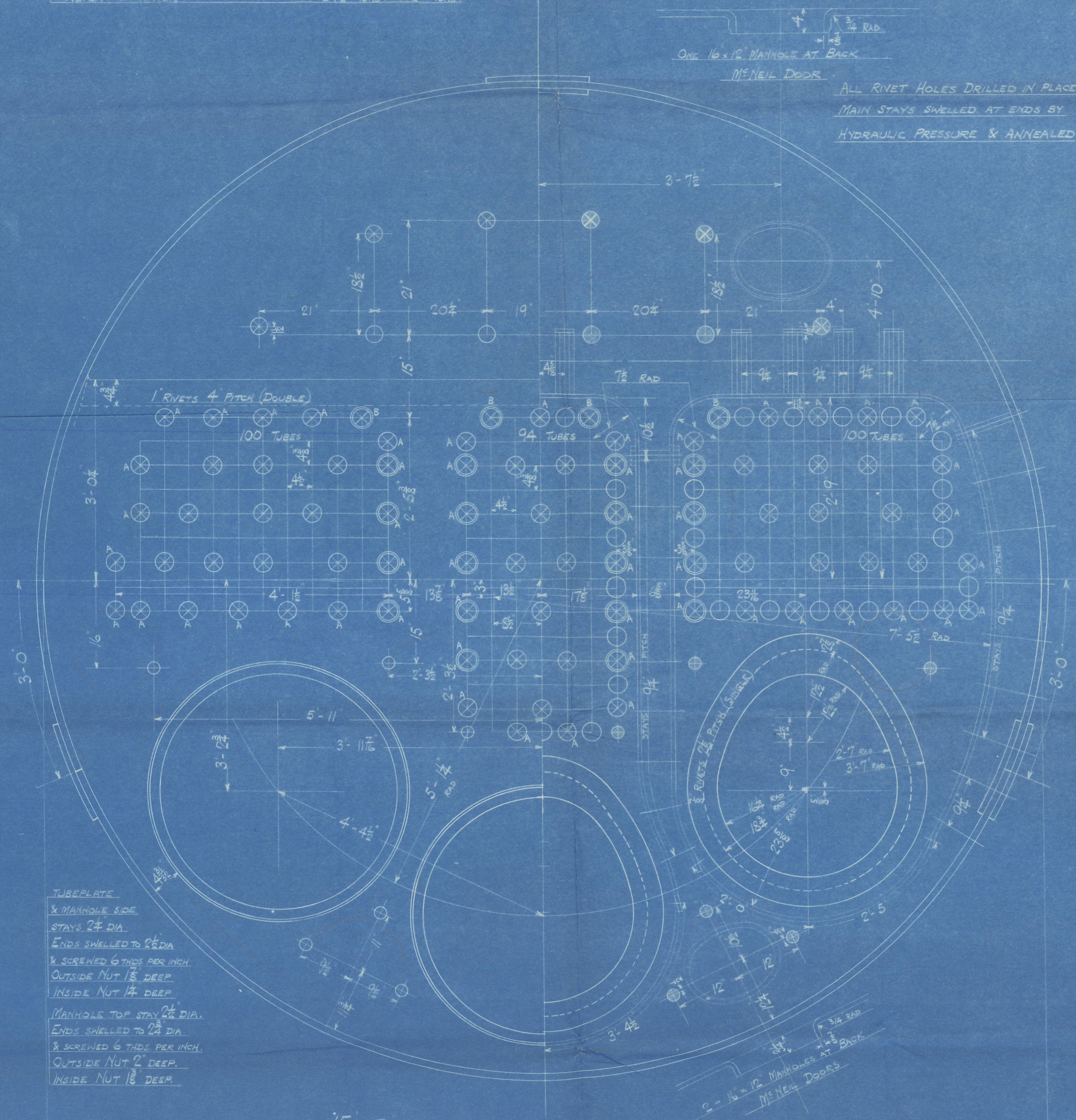
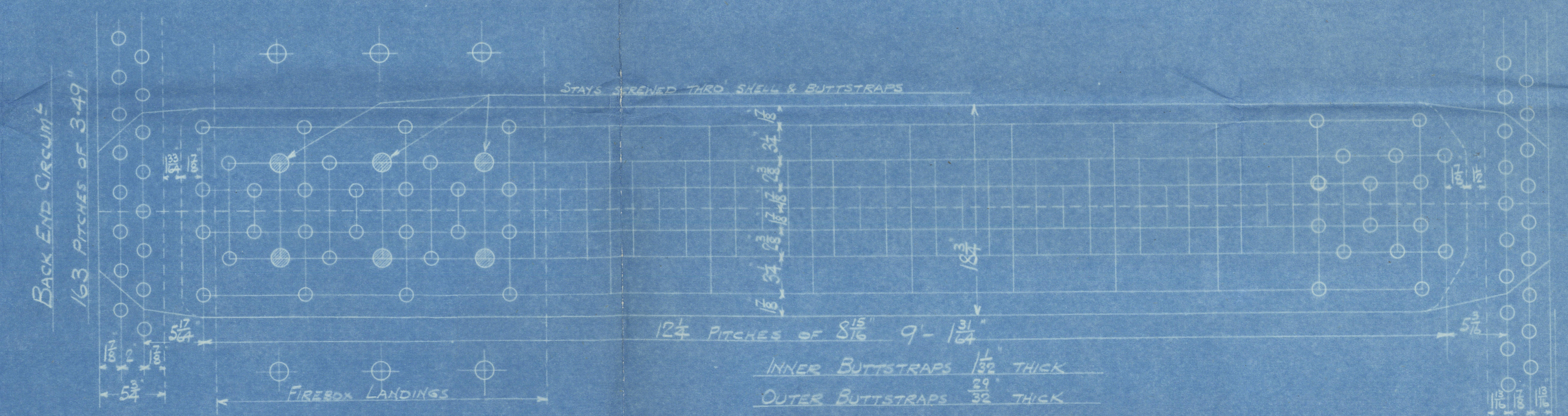


9/11/24

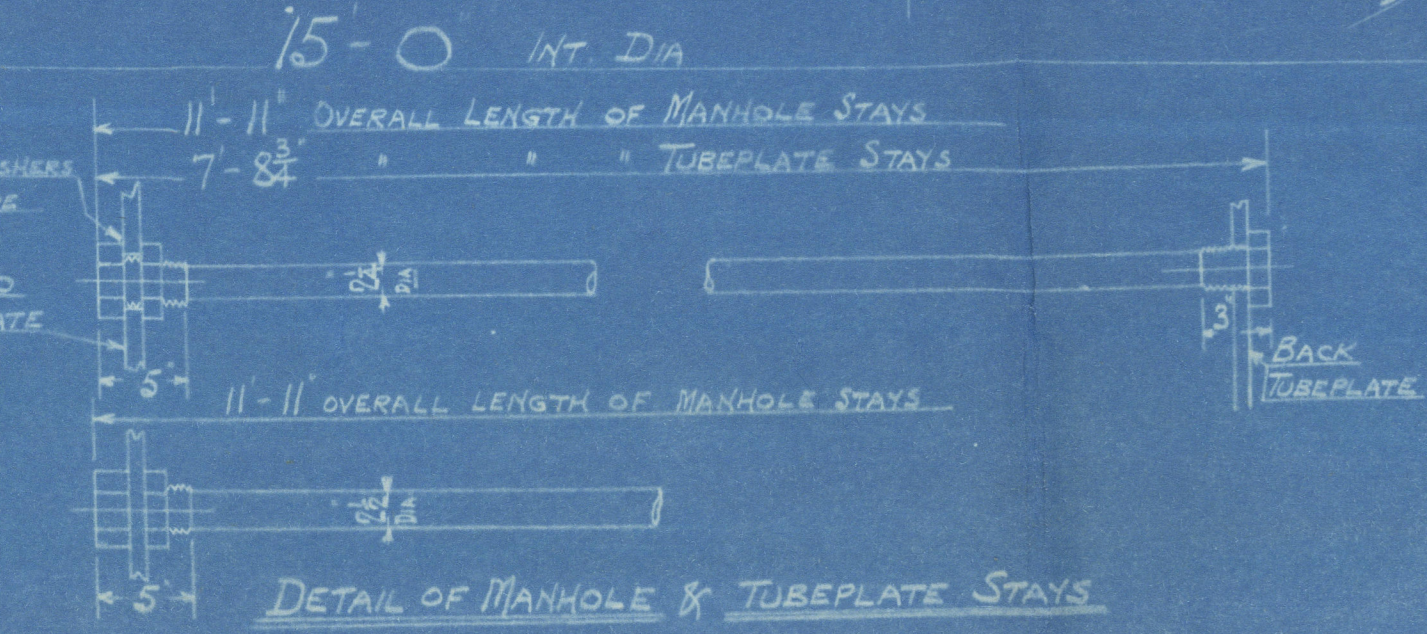
| SURFACES | ONE BOILER | 3 BOILERS |
|------------------------------|-------------|-------------|
| TUBES | 1825 # | 5805 # |
| FIREBOX TOP AND SIDES | 163 | 489 |
| " BACK | 77 | 231 |
| TUBEPLATE | 48 | 144 |
| FURNACES | 144 | 432 |
| TOTAL HEATING SURFACE | 2267 # | 6801 # |
| GRATE AREA (5-6 BARS) | 59 | 177 |
| TUBE AREA | 18.3 | 59.9 |
| WATER AREA | 154 | 462 |
| STEAM SPACE | 460 # | 1380 # |
| GRATE AREA : HEATING SURFACE | 1 : 38.4 | 1 : 31.5 |
| " : TUBE | 1 : 31.5 | 1 : 1 |
| " : WATER | 1 : 2.61 | 1 : 7.8 |
| " : STEAM SPACE | 1 : 7.8 | 1 : 31.3 |
| 1/2 BOILER ABOVE FIREBOX | 24 1/2 TONS | 73 1/2 TONS |
| HEIGHT OF WATER | 24 1/2 TONS | 73 1/2 TONS |

| RIVETING | | |
|----------------|-----------------|------------------|
| LONG | BACK END CIRCUM | FRONT END CIRCUM |
| RIVET HOLE DIA | 1 1/8 | 1 1/8 |
| PITCH | 5 1/2 | 3-4 1/2 |
| 1/2 PLATE | 36.01 | 64.1 |
| 1/2 RIVET | 36.8 | 47.5 |
| 1/2 COMBINED | 39.4 | 47 |

| LIMITS OF TENSILE STRENGTH & MATERIAL | | |
|---------------------------------------|---------------|--------------------|
| SHELL, BUTTSTRAP AND GIRDERS | 28 TO 32 TONS | SPECIAL MILD STEEL |
| OTHER PLATES | 26 TO 30 | |
| FURNACES | 26 TO 30 | |
| MAIN STAYS | 28 TO 32 | |
| SCREENED STAYS | 26 TO 30 | |
| RIVET BARS | 26 TO 30 | |



TUBEPLATE
MANHOLE SIDE
STAYS 2 1/2 DIA.
ENDS SHELLED TO 2 1/2 DIA.
& SCREWED 6 THDS PER INCH
OUTSIDE NUT 1/8 DEEP
INSIDE NUT 1/4 DEEP
MANHOLE TOP STAY 3/4 DIA.
ENDS SHELLED TO 3/4 DIA.
& SCREWED 6 THDS PER INCH
OUTSIDE NUT 1/8 DEEP
INSIDE NUT 1/4 DEEP



MAIN BOILER
3 OFF
CONT NO 817

WORKING PRESSURE 180 LBS PER SQ. INCH
TEST 220
TO PASS LLOYD'S SURVEY
SCALE 1/4" = 1'-0"

| FIREBOX STAYS | | STEEL | | SCREWED TUBES PER INCH |
|-------------------|------|-------|-----------|------------------------------|
| POSITION | MARK | DIA. | DIA. REV. | |
| BACK, TOP & SIDES | ○ | 1 1/8 | 1.844 | 10 |
| BACK WIDE SPACES | ○ | 1 1/8 | 2.199 | 10 |
| BACK TOP ROW | ○ | 1 1/8 | 2.585 | 10 |
| " CORNER | ○ | 2 | 3.093 | 10 |

ALL FIREBOX STAYS SCREWED THRO BOTH PLATES AND NOT FITTED AT
EACH END EXCEPT STAYS FROM MAIN FIREBOX TO SHELL AND STAYS
MARKED C IN BACK BOTTOM END WHICH PROTECT & ARE GAULKED
ALL 1/8" NUTS 1/8" DEEP EXCEPT ON GIRDER TOPS WHERE THE OUTSIDE
NUTS ARE 1/8" DEEP
ALL 1/8" NUTS 1/8" DEEP

OT 30799



W403-0116

© 2020

From DAVID ROWAN & CO., Ltd., Glasgow

ENCLOSURE

FOR MESSRS.

Lloyds Register of Shipping

212

W403-0116

D. Rowan & Co. Ltd.

Cont. No 817.

3 S.E. Boilers

W.P. 180 lbs/sq. in.

No 16903

LLLOYD'S TEST

320 LBS

WP-180 LBS

H.Y.B.

12-8-25

Graiguen

GLASGOW REPORT No 45385

RETAIN

W403-0116 1/2

© 2020



Lloyd's Register
Foundation
App'd 1.11.24