

THE NORTH EASTERN MARINE ENGINEERING CO. LTD

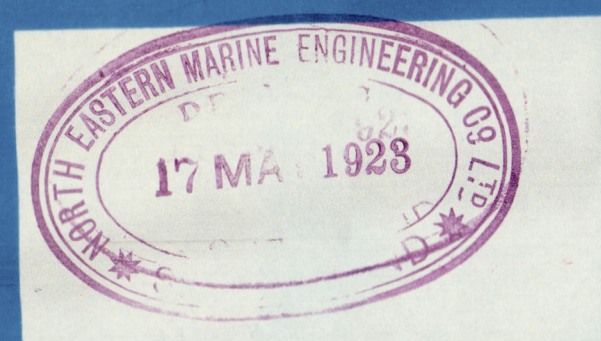
SUNDERLAND.

DONKEY BOILER.

SCALE = 1 INCH TO A FOOT.

SCHEDULE "L".

WRITTEN DIMENSIONS ONLY TO BE TAKEN.



BUTT STRAPS  
INSIDE 25"  
OUTSIDE 2 1/2"

RIVET HOLES 15" DIA.

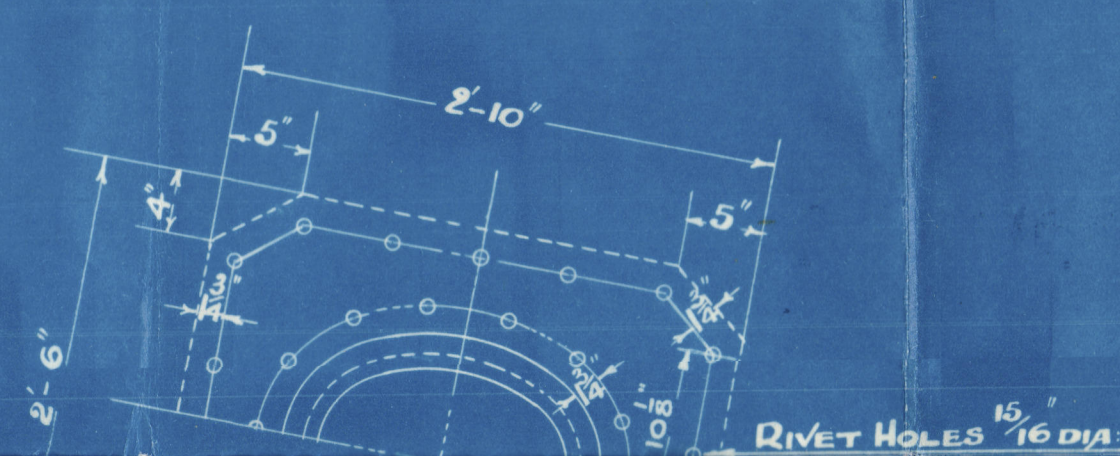
PLATE 55" THICK.  
RIVET HOLES 15" DIA.  
PITCH = 6 3/4"

PLATE SECTION = 86.11%  
RIVET " = 91.75%  
COMBINED PLATE & RIVET SECTION = 90.5%

RIVET HOLES 15" DIA.

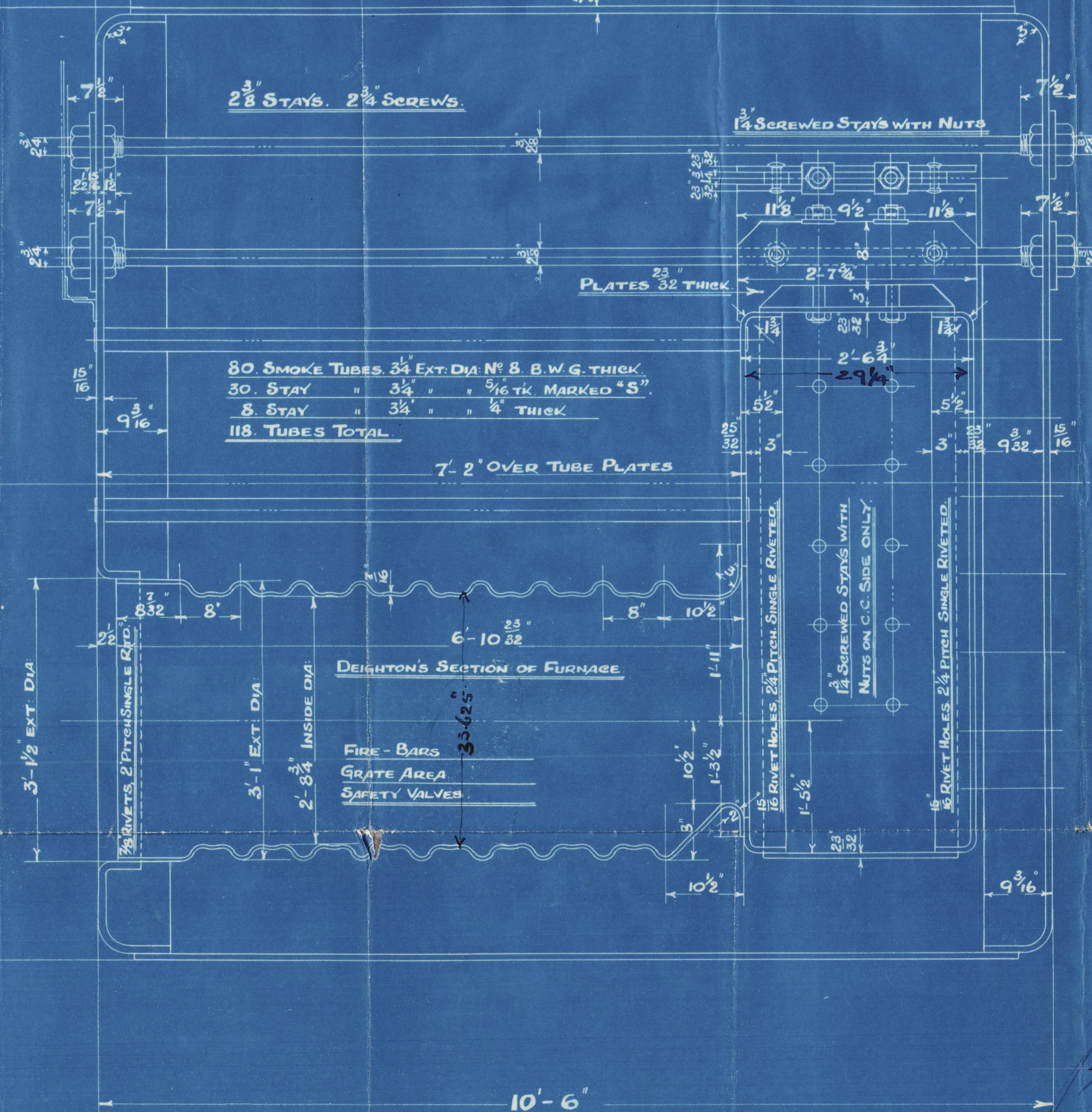
15 PITCHES @ 6 3/4" 8' 5 1/4"

ALL RIVETS TO BE PUT IN BOTH  
ENDS OF THE BOILER.



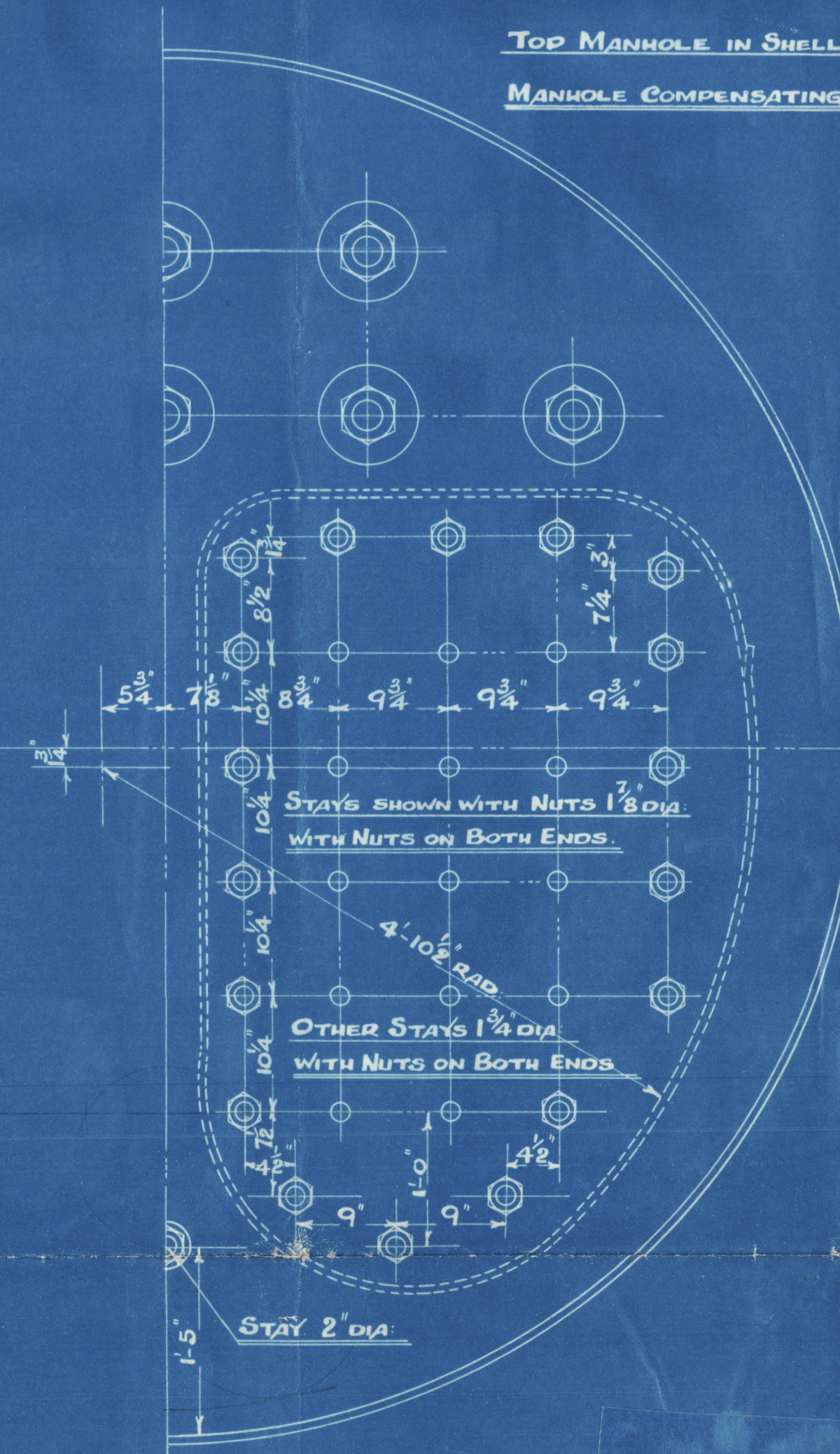
Size of opening in  
shell - 16 x 20"

10' 6" EXTERNAL DIAMETER



To PASS LLOYD'S SURVEY.		
SHELL =	(27.5 - 2) 28 × 86.11 2.75 × 124.28125	180 LBS PER
WORKING PRESSURE .		180 " "
TEST " .		320 " "
HEATING SURFACE ON TUBES.		720 SQ FEET
" " OTHER PARTS .		230 " "
" " TOTAL .		950 " "
EX: FRONT TUBE PLATE		930 " "
EFFECTIVE AREA OF STAYS		
3 1/4" STAY TUBES 3/16" THK. 9 THREADS PER IN.		2.17 SQ INCHES
3 1/4" " " 1/4" " 9 " " "		1.64 " " "
2 1/8" MAIN STAYS .	6 " " "	4.43 " " "
2' " " " " " " "	6 " " "	2.51 " " "
1 1/8" SCREWED " .	9 " " "	2.36 " " "
1 1/4" " " " " " " "	9 " " "	2.03 " " "
ALL PLATES, RIVETS & STAYS - STEEL -		
TUBES - WROUGHT IRON.		
HOLES TO BE DRILLED IN PLACE AFTER BENDING.		
TENSILE STRENGTH OF SHELL PLATES 28 TO 32 TONS .		
" " " GIRDER " 28 TO 32 " " "		
" " " MAIN STAYS 28 TO 32 " " "		
" " " OF OTHER PLATES & SCREWED STAYS 26 TO 30 " " "		

TOP MANHOLE IN SHELL 16" x 12"  
MANHOLE COMPENSATING 2' 10" x 2' 6" x 3/8" THK.



SECTION THRO' MANHOLE.

DRAWN BY J.D.H.  
TRACED BY L.D.A.  
CHECKED BY J.A.S.

CONTRACT 2548. I. OFF.

DRAWING NO 7557.



Lloyd's Register  
Foundation

W403-0030



SUNDERLAND

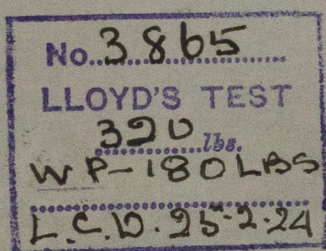
NE. MARINE ENG CO. LD

DONKEY BOILER N° 2548

WP-180 LBS

R. THOMPSON & SONS

S/S N° 320



RETAIN

SUNDERLAND RPT. NO. 28482

*sf "Goathland"*

W403 - 0030



© 2020

Lloyd's Register  
Foundation