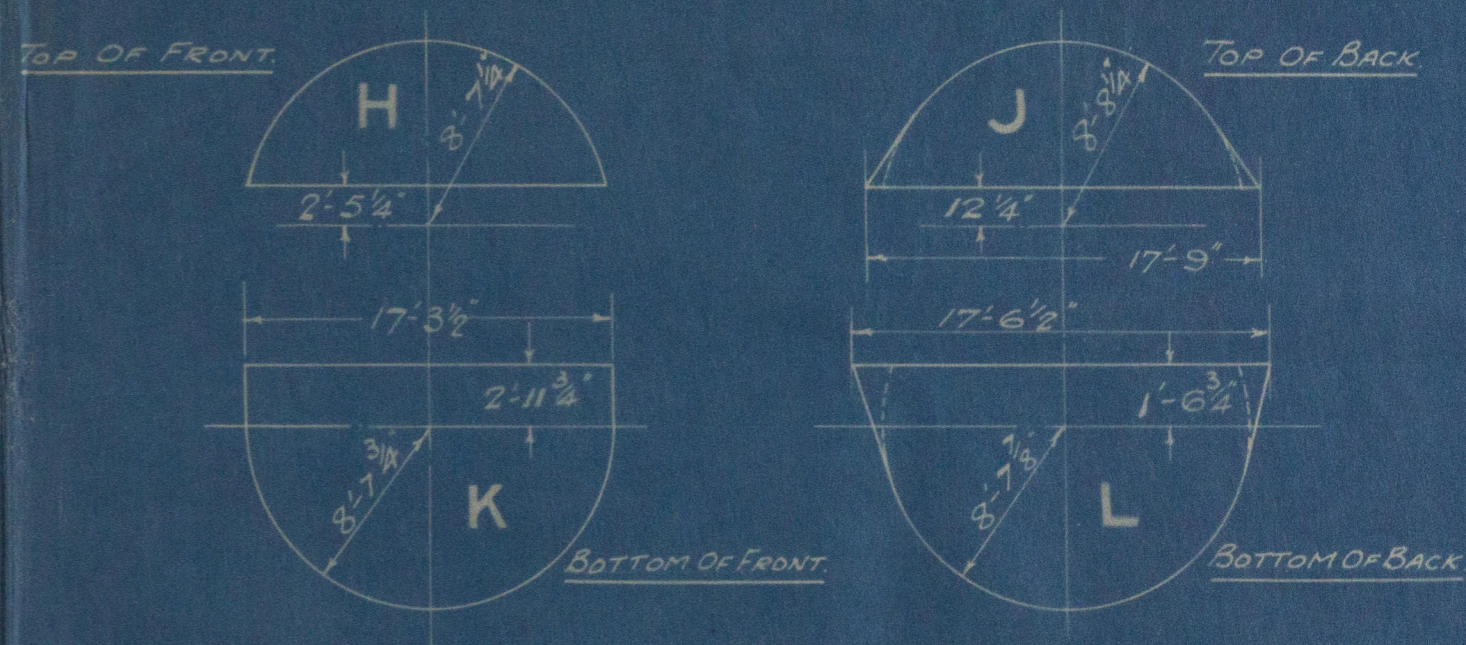


PLATES FOR ONE BOILER.

LETTER	NO OF PLATES.	POSITION.	DIMENSIONS.
A	2	SHELLS TOP.	15'-1 $\frac{3}{4}$ " x 11'-1 $\frac{1}{2}$ " x 1 $\frac{5}{32}$ "
B	1	" BOTTOM.	19'-4 $\frac{3}{8}$ " x 11'-1 $\frac{1}{2}$ " x 1 $\frac{5}{32}$ "
C	3	OUTER BUTTS.	11'-1 $\frac{1}{2}$ " x 1'-11 $\frac{5}{8}$ " x 1 $\frac{1}{8}$ "
D	3	INNER BUTTS.	10'-3 $\frac{3}{4}$ " x 1'-10 $\frac{7}{8}$ " x 1 $\frac{5}{16}$ "
E	1	MANHOLE RING.	3'-0 $\frac{1}{2}$ " x 2'-7 $\frac{1}{2}$ " x 1 $\frac{5}{32}$ " THICK.
F	8	GIRDERS CENTRE.	3'-2" x 1'-1 $\frac{3}{8}$ " x 1"
G	16	GIRDERS WINGS.	3'-2" x 1'-2 $\frac{1}{4}$ " x 1"
H	1	TOP OF FRONT.	TO SKETCH x 1 $\frac{9}{32}$ " THICK.
J	1	TOP OF BACK.	" " x 1 $\frac{9}{32}$ " "
K	1	BOTTOM OF FRONT.	" " x 1 $\frac{31}{32}$ " "
L	1	BOTTOM OF BACK.	" " x 1 $\frac{29}{32}$ " "
M	1	BACK TUBE PLATE CENTRE.	10'-4 $\frac{3}{4}$ " x 4'-8" x 1 $\frac{15}{16}$ "
N	2	" " WINGS.	8'-4 $\frac{1}{2}$ " x 5'-5" x 1 $\frac{13}{16}$ "
P	1	CHAMBER BACKS CENTRE.	10'-4 $\frac{3}{4}$ " x 4'-8" x 1 $\frac{11}{16}$ "
R	2	" " WINGS.	8'-4 $\frac{1}{2}$ " x 5'-5" x 1 $\frac{11}{16}$ "
S	1	CHAMBER SIDES CENTRE.	TO SKETCH
T	2	" " WINGS.	" "
V	1	CHAMBER TOPS CENTRE.	5'-0" x 2'-8 $\frac{1}{8}$ " x 2 $\frac{1}{32}$ "
W	2	" " WINGS.	6'-7" x 2'-8 $\frac{1}{8}$ " x 2 $\frac{3}{32}$ "
Z	1	FLAT MANHOLE DOORS.	2'-10" x 1'-8 $\frac{1}{2}$ " x 1 $\frac{3}{8}$ "



2'-8 $\frac{3}{8}$ "	23" THICK	1" THICK	23" THICK	2'-8 $\frac{3}{8}$ "
6'-7"		8'-0"	6'-7"	CENTRE PLATES S.
5'-10"		4'-9"	6'-4"	WINGS T.

Plates ordered from Messrs Spence & Co. Newcastle.

MILD STEEL BOILER PLATES TO PASS THE LATEST TESTS & REQUIREMENTS OF BOARD OF TRADE & LLOYDS SURVEY.

TENSILE STRENGTH OF SHELLS, BUTTS & MANHOLE RINGS 28 TO 32 TONS

" " " GIRDERS 26 TO 30 "

" " " ALL OTHER PLATES 26 TO 30 "

R W & CO'S M'BRO' BLR NO & IDENTIFICATION MARK TO BE PAINTED ON EACH PLATE.

255 PLATES IN ALL REQUIRED FOR FIVE BOILERS.

BOILERS NO M2266.

DRAWING NO 9829.A.

24.11.1918

