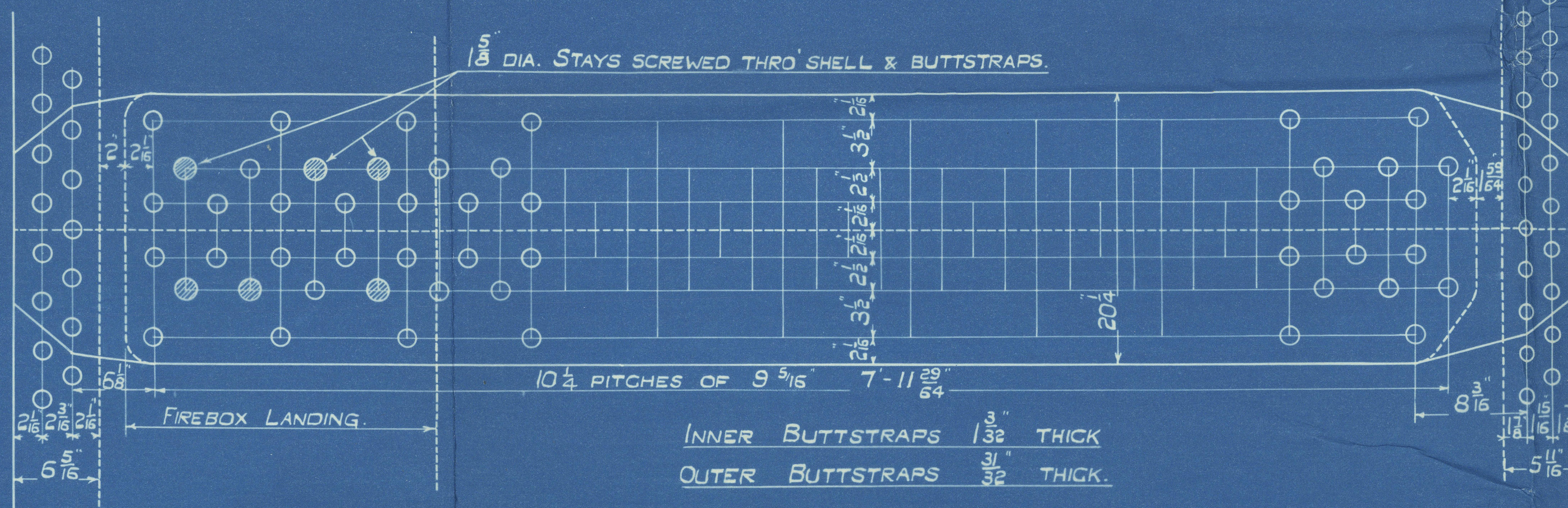


SURFACES.	ONE BOILER
TUBES	1566
FIREBOX TOP & SIDES	132
" BACK	73
" TUBEPLATE	48
FURNACES	134
TOTAL HEATING SURFACE	1953
GRATE AREA (5-6 BARS)	57 1/2
TUBE AREA	11.7
WATER AREA	148
STEAM SPACE	4.15
GRATE AREA : HEATING SURFACE	1 : 33.8
" : TUBE	1 : 27.1
" : WATER	1 : 2.56
" : STEAM SPACE	1 : 7.18
% BOILER ABOVE FIREBOX	32.1
WEIGHT OF WATER	22 TONS

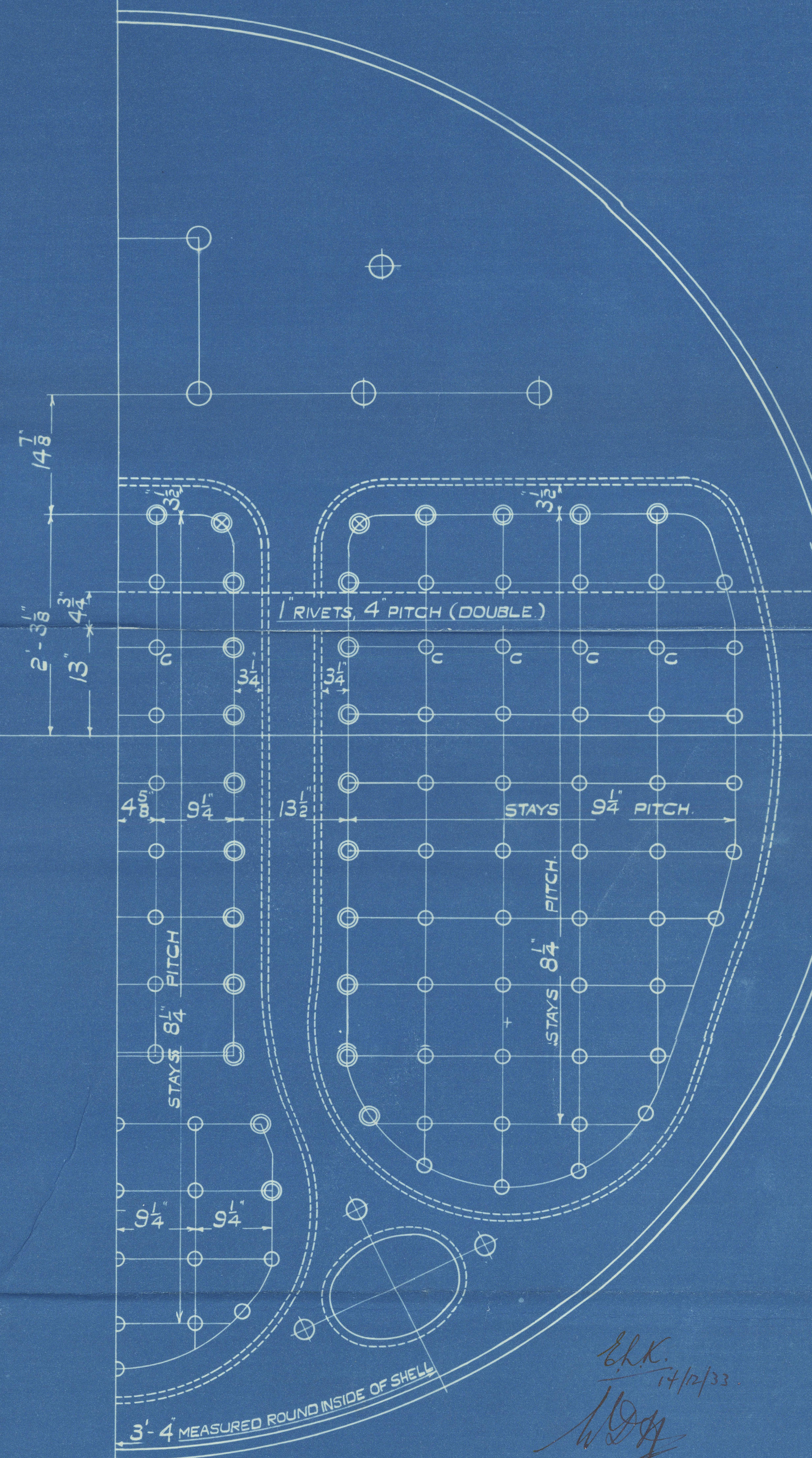
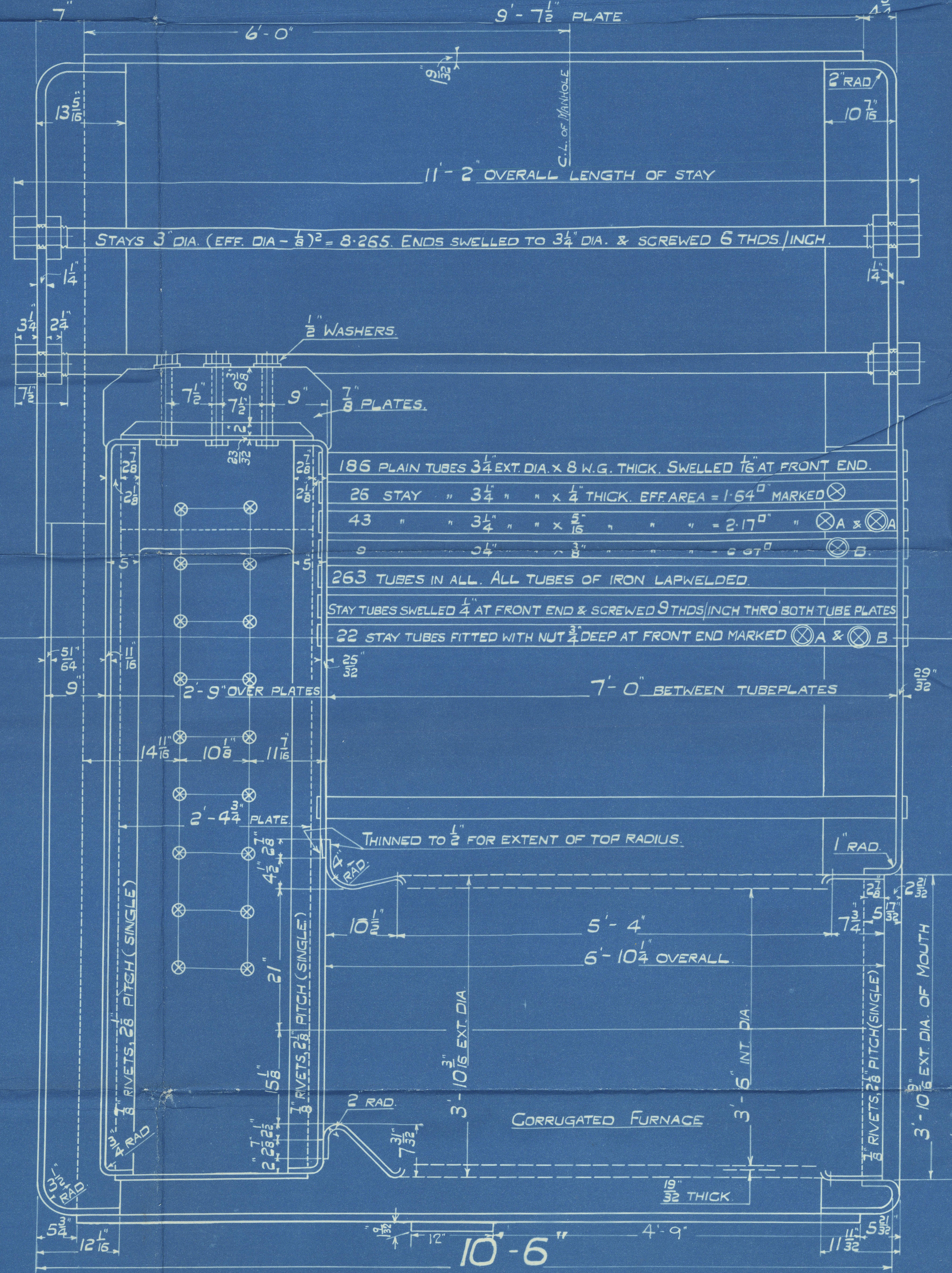
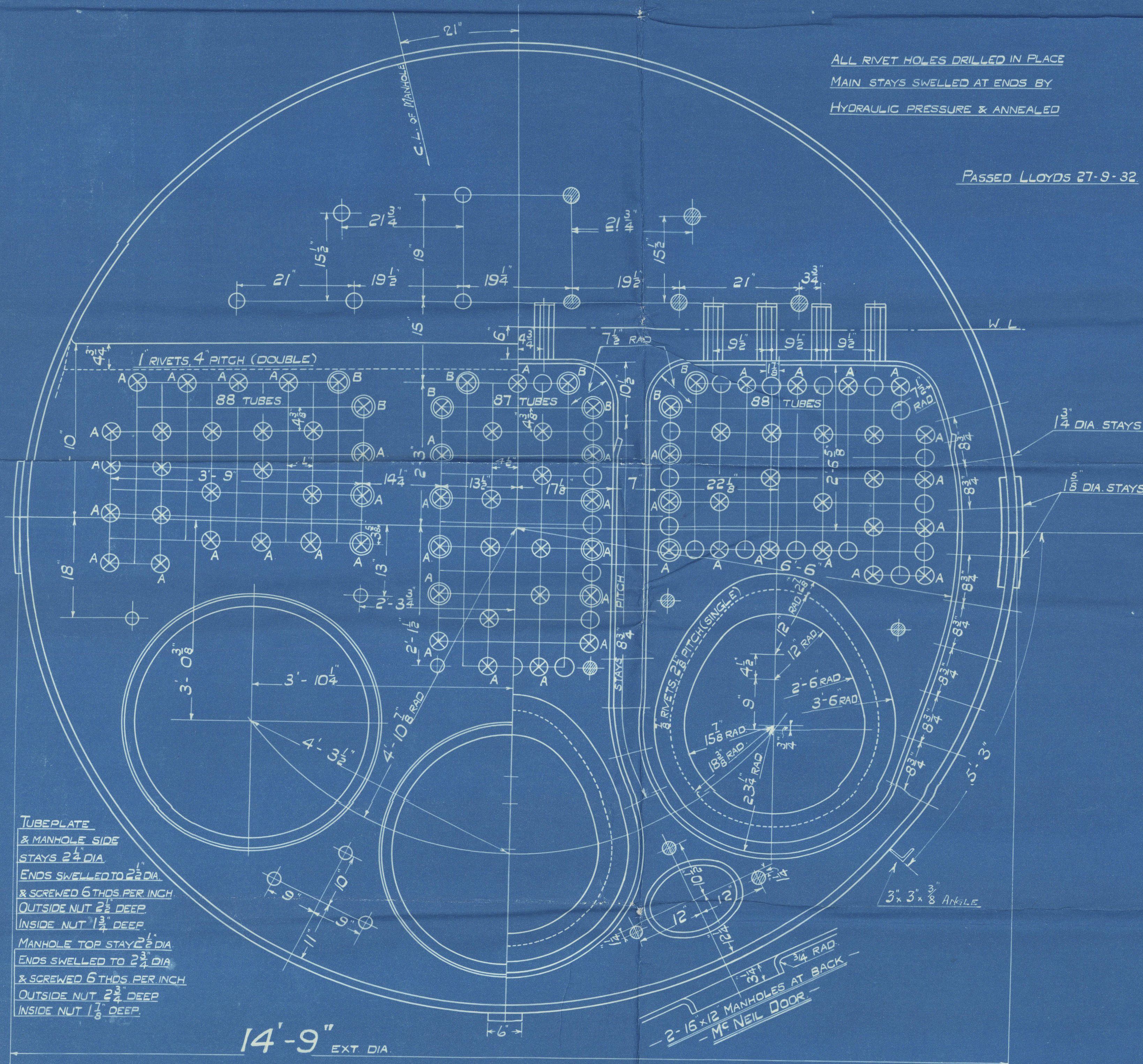
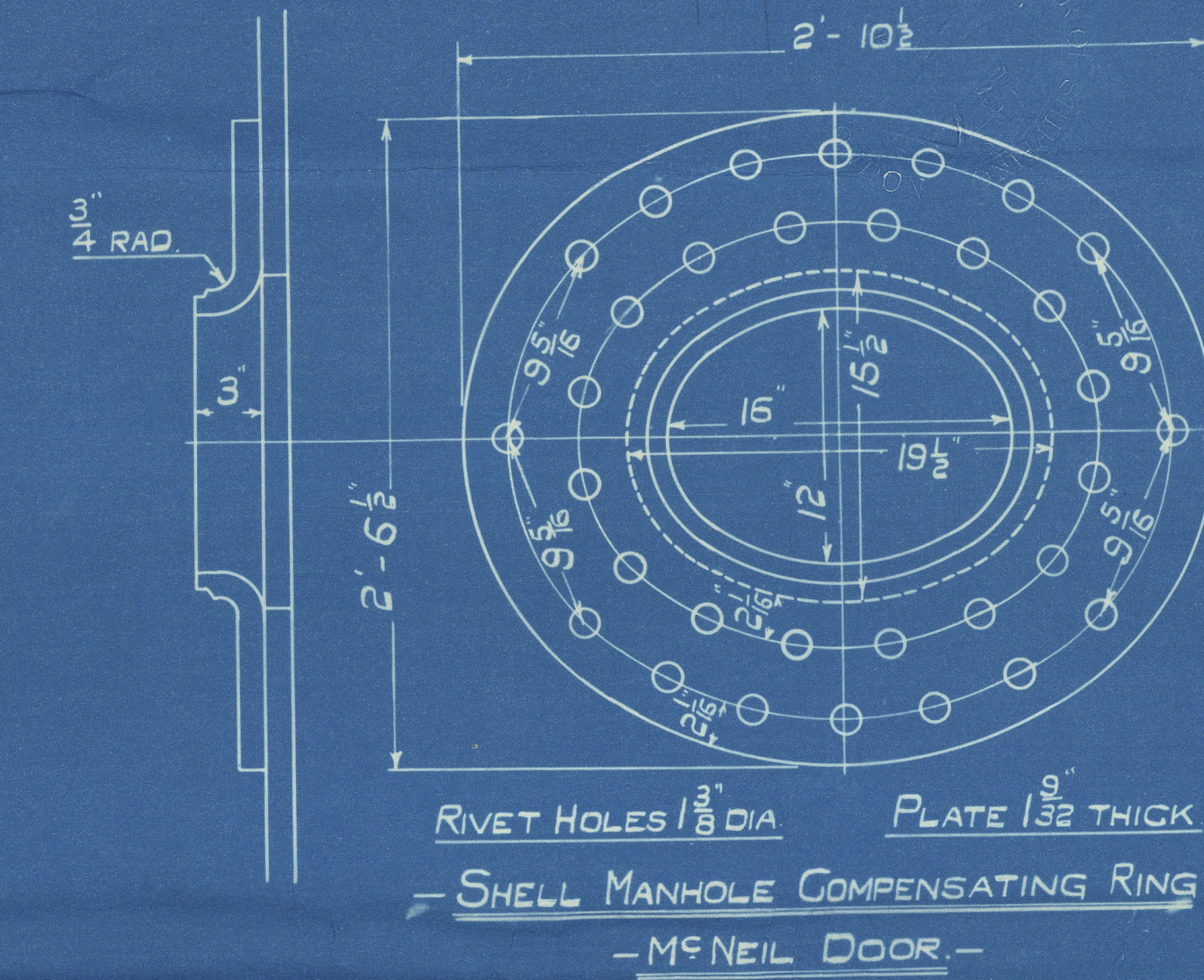
- RIVETING -			
	LONG	BACK END CIRC	FRONT END CIRC
RIVET HOLE DIA.	1 1/8	1 1/8	1 1/4
PITCH	9 1/2	3.68	3.209
% PLATE	85.2	62.6	61
% RIVET	92.1	50	52.3
% COMBINED	88.9	—	—

- LIMITS OF TENSILE STRENGTH & MATERIAL -	
SHELL & BUTTSTRAPS	29 TO 33 TONS
GIRDERS	28 " 32 "
OTHER PLATES	26 " 30 "
FURNACES	26 " 30 "
MAIN STAYS	28 " 32 "
SCREWED STAYS	26 " 30 "
RIVET BARS	26 " 30 "

- BACK END CIRCUMFERENCE -  
150 PITCHES OF 3.68



- FRONT END CIRCUMFERENCE -  
172 PITCHES OF 3.209



# - MAIN BOILER -

- ONE OFF EACH CONT. N°

- CONT N° 955 - 970

- WORKING PRESSURE 200 LBS. PER SQ. INCH. -

- TEST 350

- TO PASS LLOYDS SURVEY -

- SCALES :- 1" & 1 1/2" = ONE FOOT -

POSITION	MARK	DIA	(DIA - 26) 2	SCREWED THDS/INCH
TOP & BACK	○	1 1/8	1.844	9
SIDES	○	1 1/8	2.189	9
BACK WIDE SPACE & TOP ROW	○	1 1/8	2.585	9
BACK TOP CORNER	○	2	3.003	9

ALL FIREBOX STAYS SCREWED THRO' BOTH PLATES & NUT FITTED AT EACH END EXCEPT STAYS FROM WING FIREBOX TO SHELL & STAYS MARKED 'C' IN BACK BOTTOM END WHICH PROJECT 1/8" & ARE CAULKED. ALL 1 1/8" & 1 1/2" NUTS 1/8" DEEP EXCEPT ON GIRDER TOPS WHERE THE OUTSIDE NUTS ARE 1/8" DEEP. ALL 1 1/2" & 2" NUTS 1" DEEP.

0137672  
TRN 50565  
TRACED 29th SEPT. 1932



GLASGOW

DAVID ROWAN & CO L<sup>d</sup>

(1) BOILER N<sup>o</sup> 970

W P. 200 LBS ✓

DUPLICATE OF N<sup>o</sup> 955

BURNTISLAND S B CO

S/S N<sup>o</sup> 180

RETAIN

S/S "Island Queen"

GLASGOW REPORT No. 54400

RETAIN

W401-0091



© 2019

Lloyd's Register  
Foundation