

STEEL BOILER № 661

HEATING SURFACE

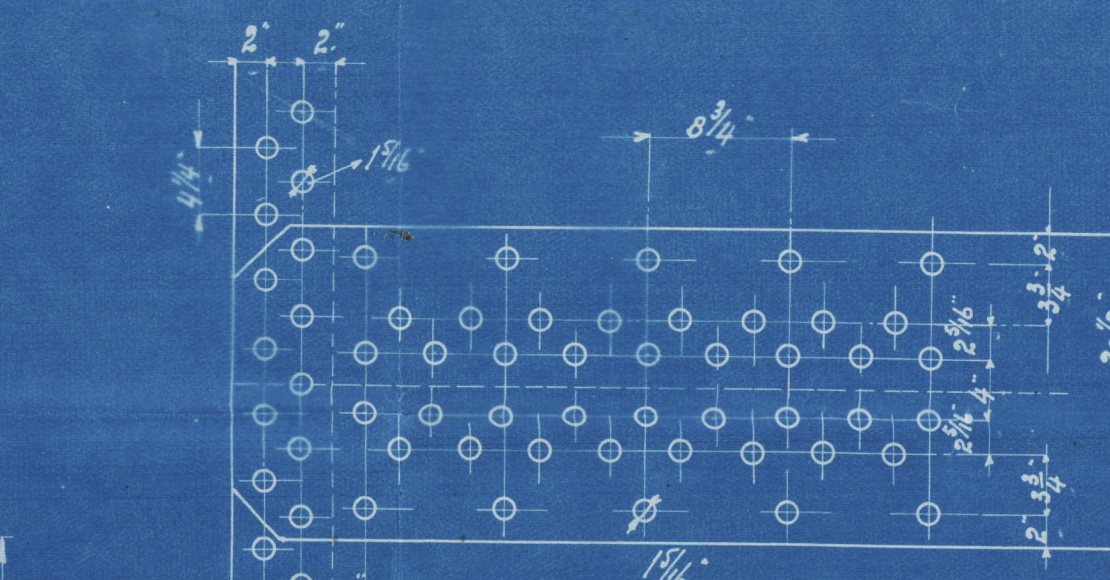
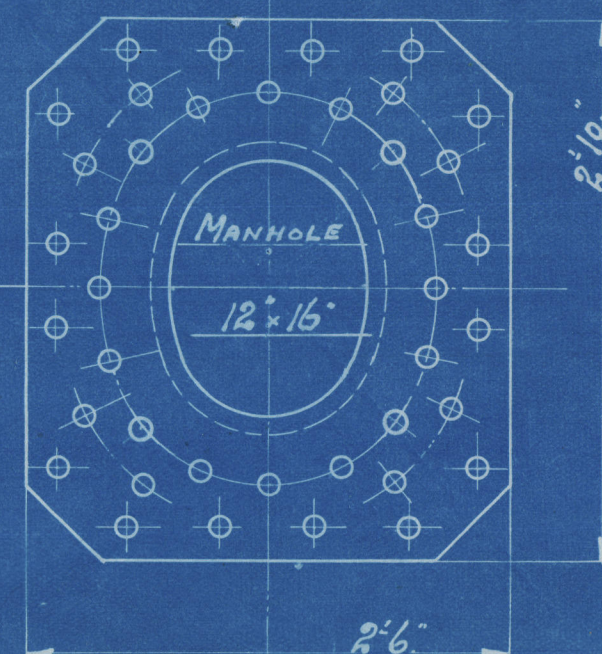
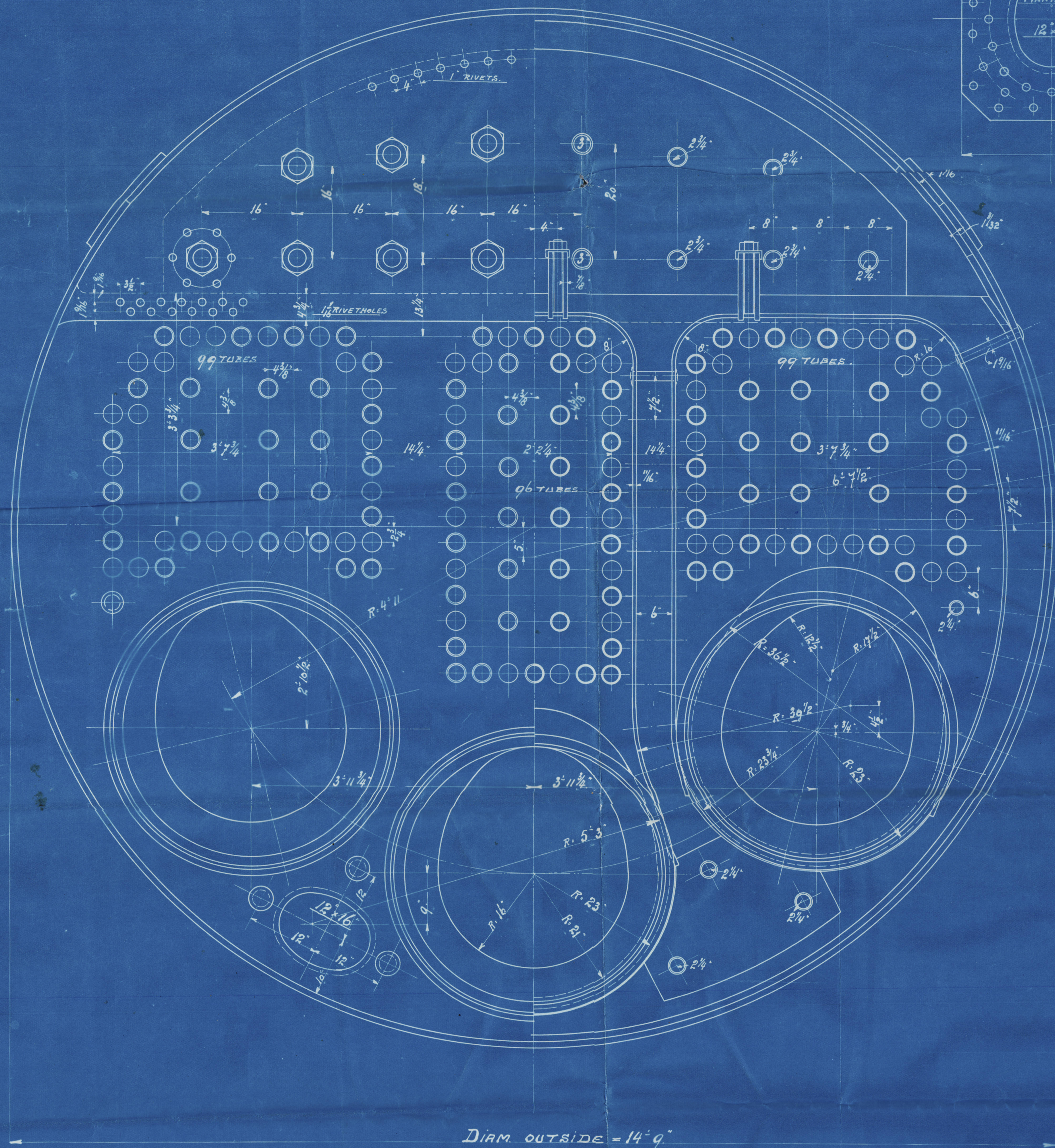
TO PASS ENGLISH LLOYDS AND DUTCH LAW

WORKING PRESSURE = 180 LBS.

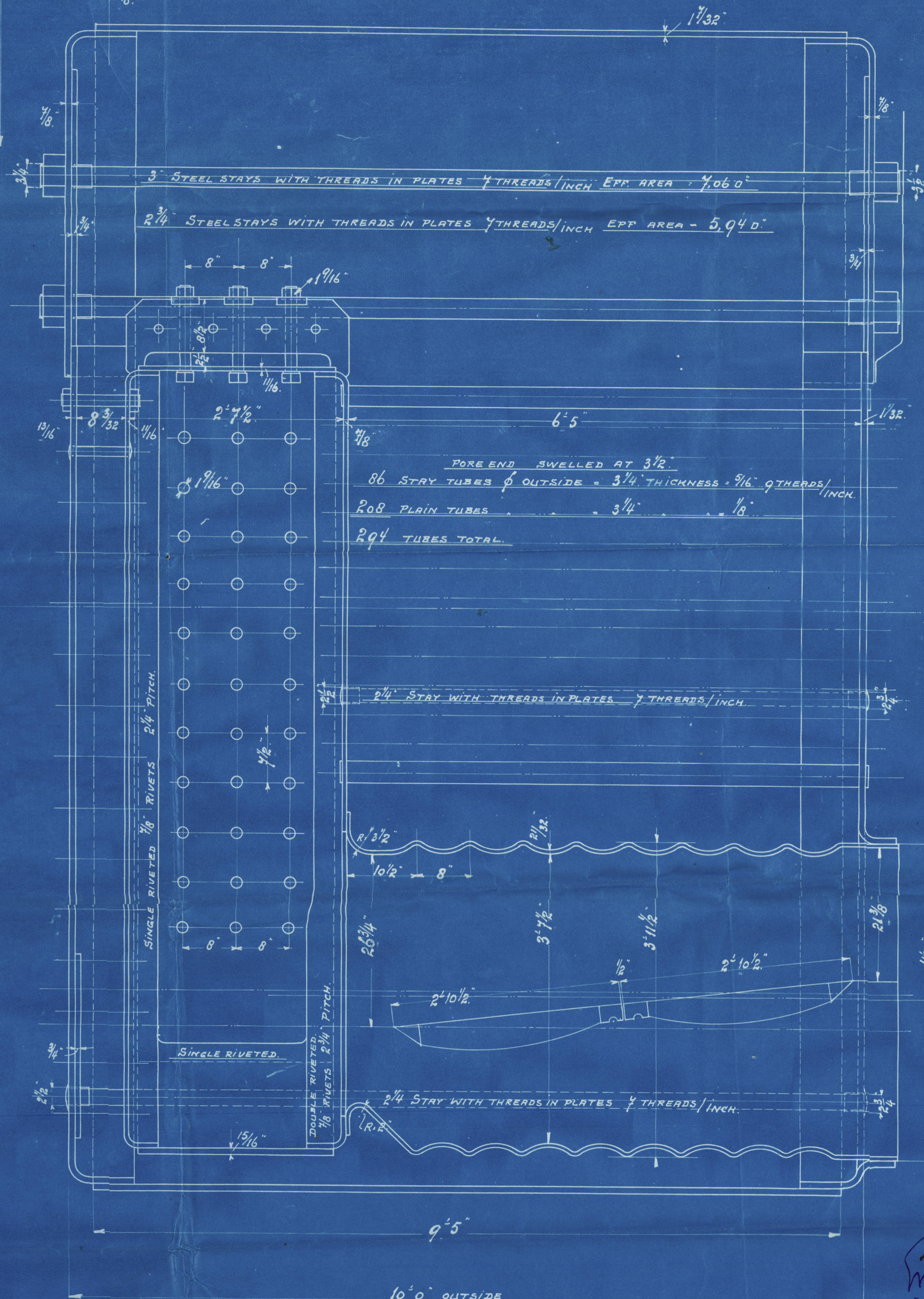
SCALE 1" = 1 FOOT

TUBES (OUTSIDE) = 1600 ϕ
COMB^{ED} CHAMBERS = 258 ϕ
FURNACES = 125 ϕ
TOTAL = 1983 ϕ = 184.5 M²
TOTAL INSIDE = 168.5 M²

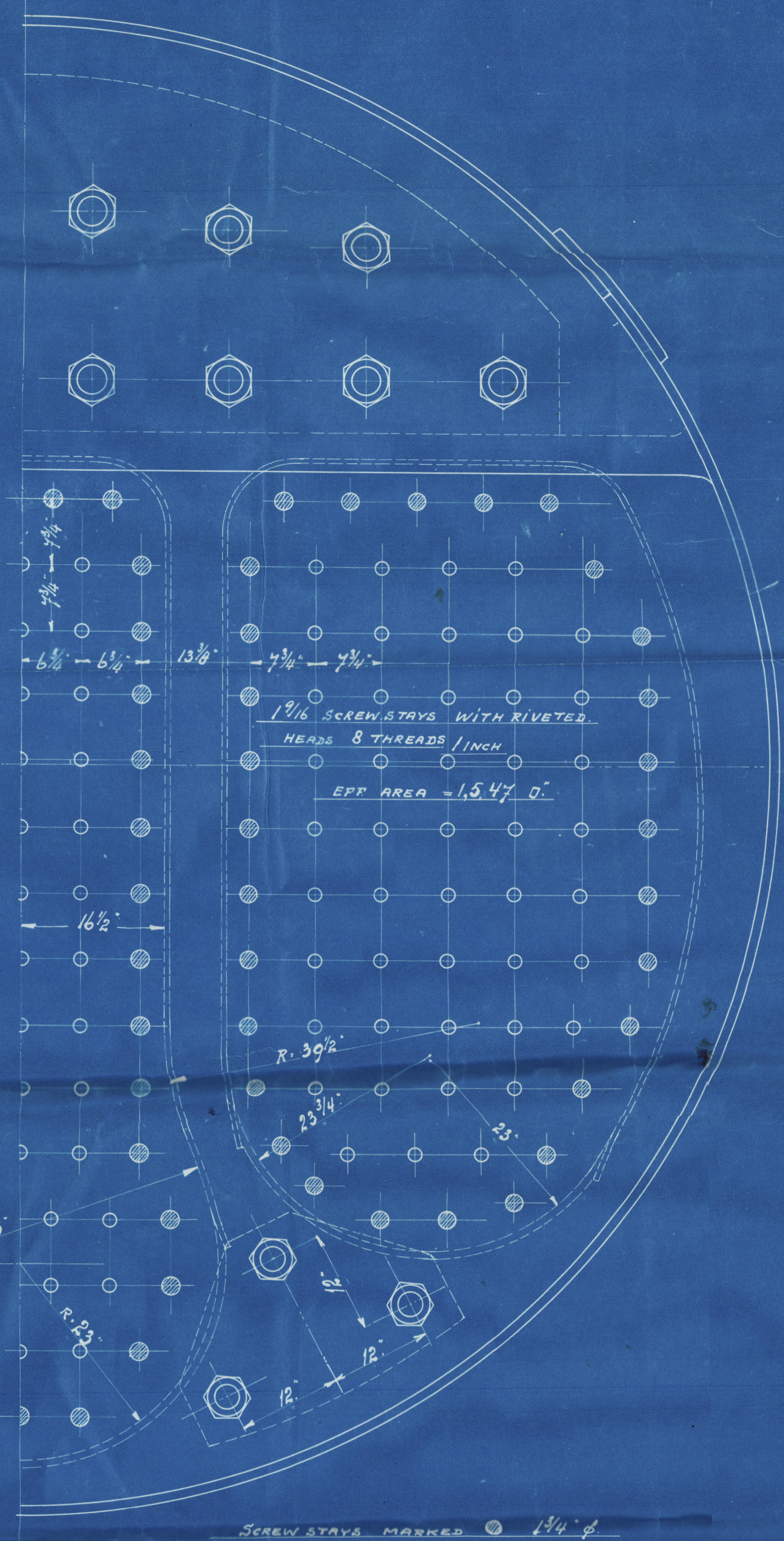
GRATE SURFACE = 64.5 ϕ



PITCH = 8 1/4"
RIVET HOLES = 1 1/8"
% PLATE = 85
% RIVETS = 92
BUTT STRAPS = 1 1/8" x 1/32"
SHELL PLATE = 1 1/32"



TENSILE STRENGTH			
	MATERIAL	TONS / IN ²	MIN ^{UM} ELONGATION
SHELL PLATES AND BUTT STRAPS	S.M. STEEL	28-32	20%
END PLATES	"	26-30	23%
COMB ^{ED} CH. PLATES	"	26-30	23%
FURNACES	"	23-27	25%
LONG ^{ITUDINAL} STAYS	"	28-32	20%
SCREW STAYS	"	26-30	23%
RIVET STEEL	"	26-30	25%
TUBES	"	24.1-28.6	20%



SCREW STAYS MARKED 144 ϕ
FITTED WITH NUTS
8 THREADS / INCH - EFF. AREA = 1,985 IN²

3-4-15
JMC



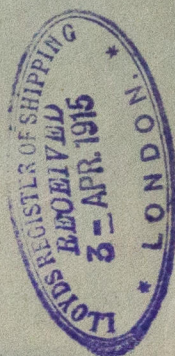
8/8 ^{"Aruba"} Laura
Rowley No 10004

Boiler 661

Cy. of No. 650, 651.

Lemna, Polina.

Man. George Portus



W4-0203



© 2021

Lloyd's Register
Foundation