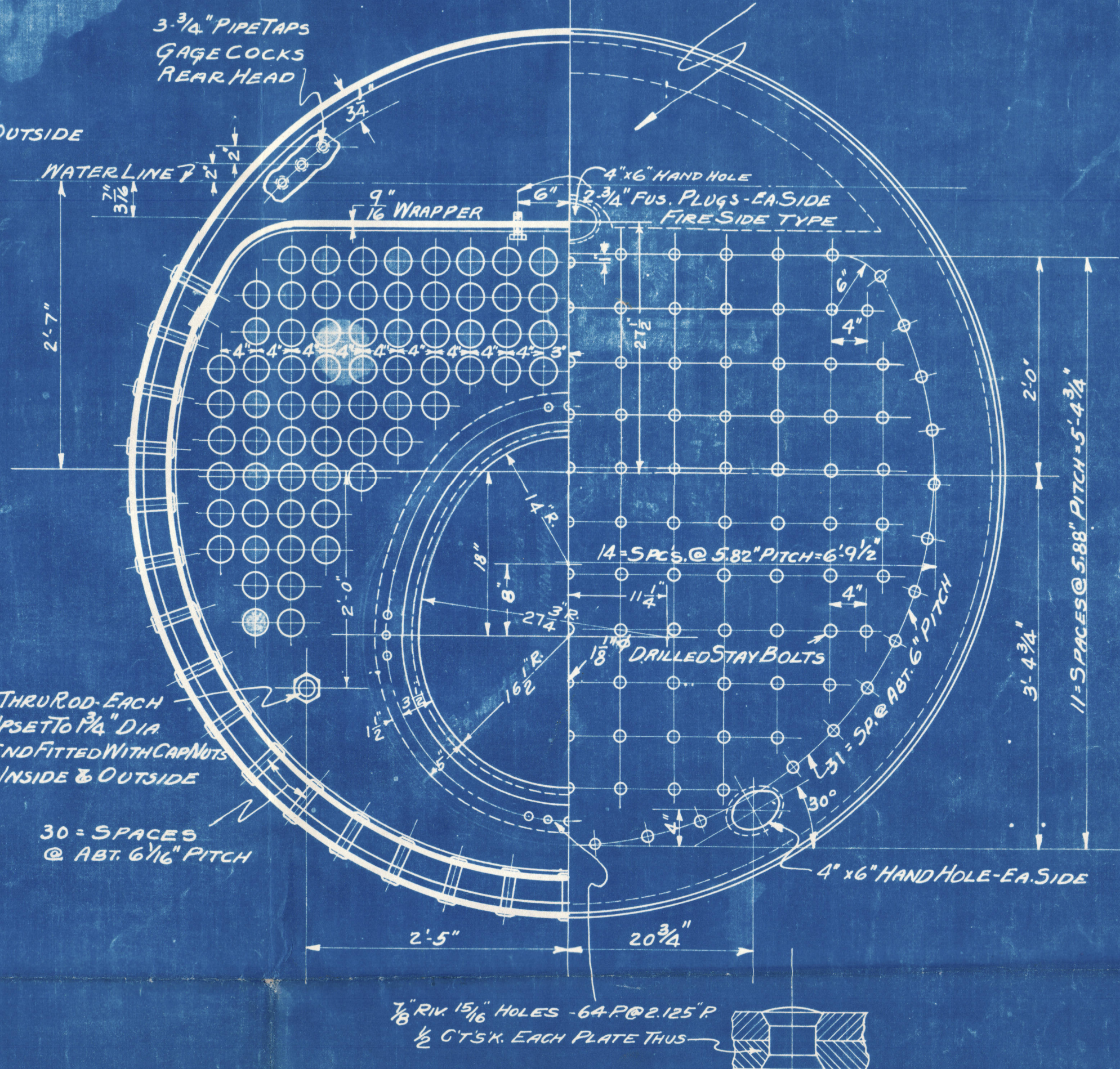
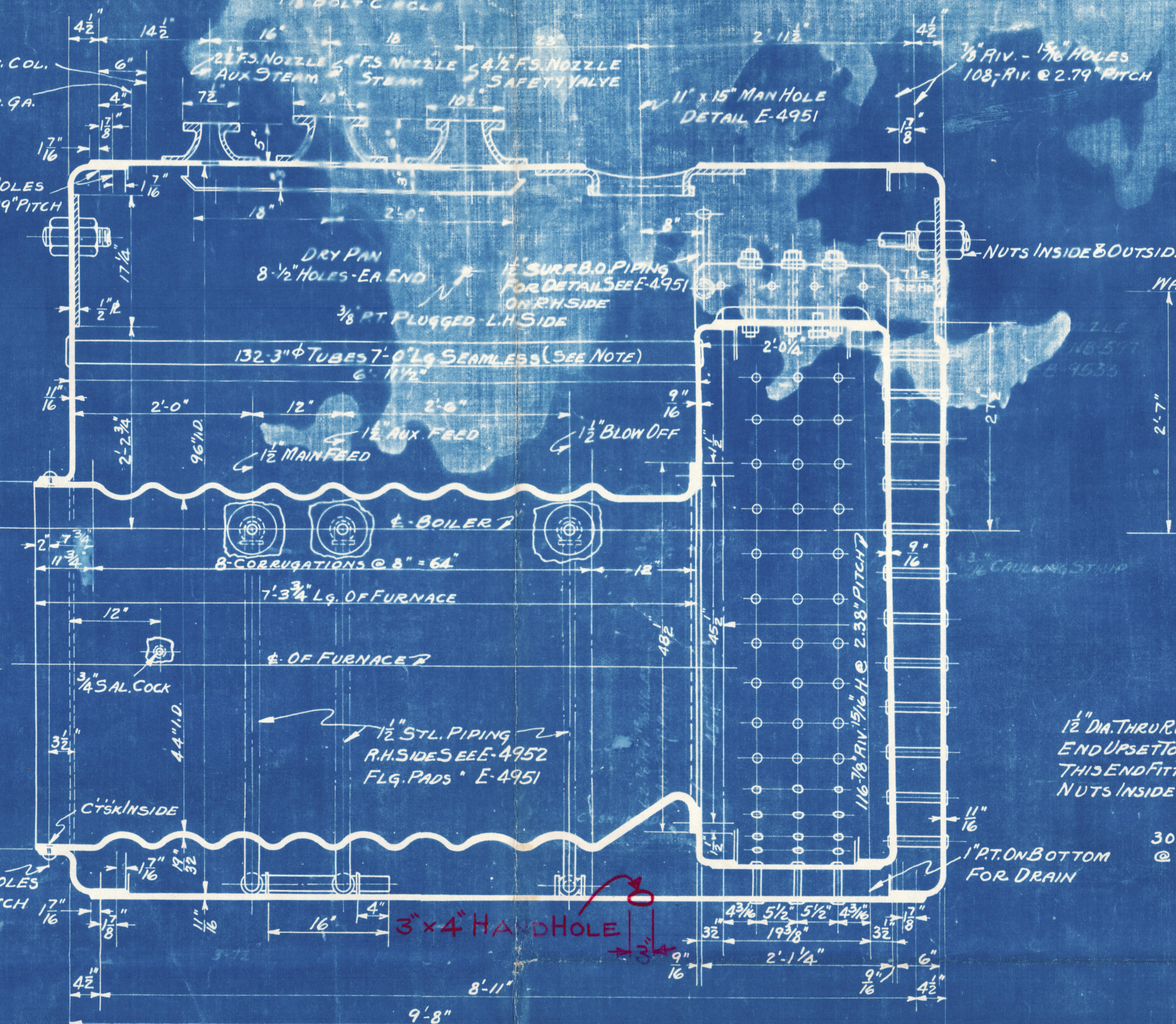


8-7/8" HOLES ON  
5 1/8" BOLT CIRCLE

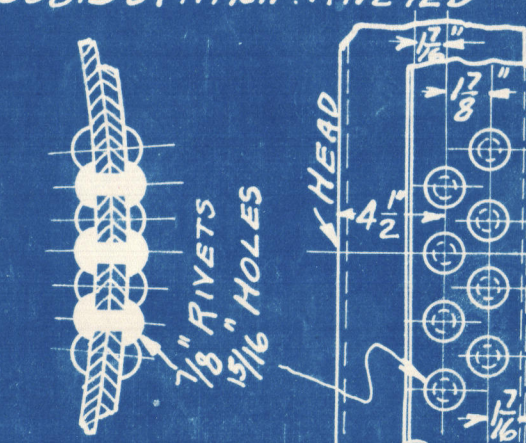
FOR BRACING OF REAR HEAD  
SEE " " FRONT "



$AREA TO BRACE = 84'' \quad d = 3.317''$   
 $TOTAL LOAD = 84 \times 184 = 15,456 \text{ LBS.}$   
 $AREA IN THRU ROD = 15,456 \div 10,000 = 1.5456 \text{ SQ. INS. REQ'D.}$   
 $AREA IN 1-1/2'' THRU ROD = 1.767 \text{ SQ. INS.}$

T.S. - SHELL - 60,000\* HEADS & FURNACE - 55,000\*  
W.P. - 184\* F.S. = 4.026  
TEST TO 276\* HYDRO. PRESS.

DETAIL OF LONG'T. JOINT EFF. 86.22%  
DOUB. BUTT. TRIP. RIVETED



DETAIL OF GIRTH SEAM-DOUB. LAP Riv. EFF. 51%

TO U.S. BUREAU MARINE INSA & NAV. RULES  
AND  
AMERICAN BUREAU OF SHIPPING  
LLOYDS REGISTER OF SHIPPING

"PETROHEAT"  
ex Volomite 3.

HEATING SURFACE = 850<sup>+</sup> INS. TUBES

APPROVAL STAMP  
BLANK OFF

96" I.D. - 184" W.P. WET BACK SCOTCH  
MARINE BOILER

**THE TITUSVILLE IRON WORKS CO.**  
TITUSVILLE, PA.

SCALE  $1" = 12"$  E-5205  
ORD. NO. 60595-B  
DR WICKER TR % CY DATE 8-6-37