

JOHN READHEAD & SONS LD.,  
SHIPBUILDERS &C.,  
SOUTH SHIELDS.

50.79  
27.70  
78.49 TRAIN. NO  
363  
28491 LONG NO.

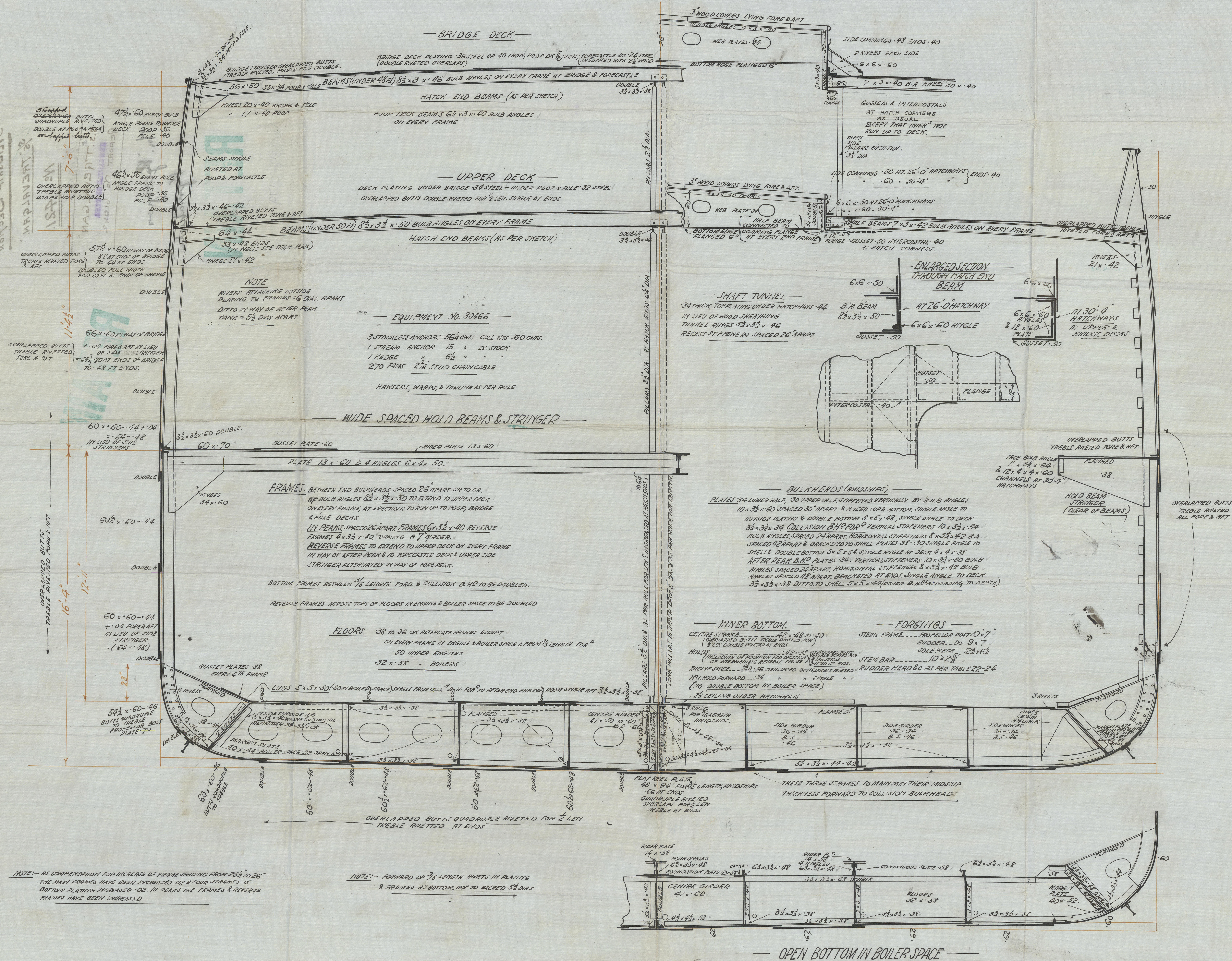
13-1 DEPTH TO U.D.  
10.3 " " B.D.  
          
Z=12.91.

Dimensions as per rule

|         |        |
|---------|--------|
| LENGTH  | 363.00 |
| BREADTH | 50.79  |
| DEPTH   | 27.70  |

CLASS 100 A.1

-9-11-



NOTE:- AS COMPENSATION FOR INCREASE OF FRAME SPACING FROM 252<sup>1</sup>/<sub>2</sub> TO 26 THE MAIN FRAMES HAVE BEEN INCREASED OR 4 FOUR STRINGS OF BOTTOM PLATING INCREASED OR, IN PEAKS THE FRAMES & REVERSE FRAMES HAVE BEEN INCREASED

NOTE:- FORWARD OF  $\frac{3}{5}$  LENGTH RIVETS IN PLATING  
& FRAMES AT BOTTOM, NOT TO EXCEED  $5\frac{1}{2}$  DIA.

OPEN BOTTOM IN BOILER SPACE



Newcastle-on-Tyne  
John Readhead & Sons, Ltd.  
MIDSHIP SECTION.

S/S TREVALGAN.

No 421.

S.S. TREVALGAN

NEWCASTLE-ON-TYNE

REPORT No 61042

"M. Georgios

Kynakides

RETAIN

W389-0179

© 2020

Lloyd's Register  
Foundation