

Moulded Dimensions: Length 289'4" Breadth 33'2" Depth 24'83"

GENERAL PARTICULARS
 Builder T. & M. Cochrane Ltd. Glasgow
 Date of Delivery 1914
 Name of Ship S.S. Gracefield
 Class of Ship S.S. Cargo
 Gross Tonnage 4681.45
 Net Tonnage 2882.11
 Deadweight 11,000
 Official Number 149477

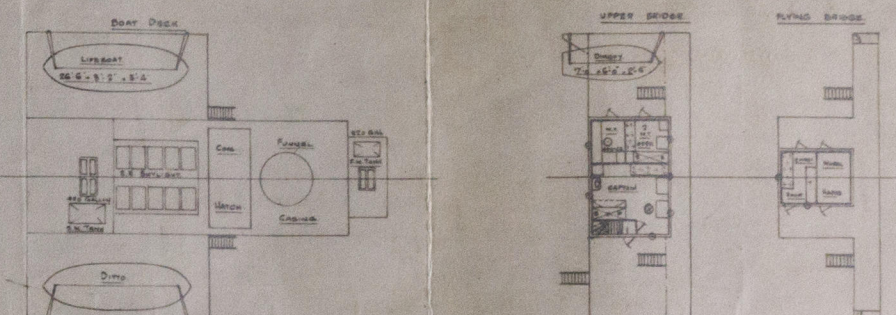
ENGINES
 Type Vertical Single Cylinder
 Horsepower 250
 Revolutions per Minute 110
 Fuel Oil Consumption 100 lbs. per hour
 Water Consumption 250 tons per hour
 Registered Tonnage 4681.45
 Gross Tonnage 4681.45
 Net Tonnage 2882.11
 Deadweight 11,000
 Official Number 149477

COMPARTMENT	FRAMES	GROSS C.F.	NET C.F.
No. 1 Hold	158-105	71,100	68,500
No. 2 Hold	104-105	106,500	100,500
No. 3 Hold Reserve Bk	9-104	43,400	37,900
No. 4 Hold	40-70	89,500	85,800
No. 5 Hold	12-40	25,900	20,600
TOTAL HOLDS		375,000	347,600
FORECASTLE TRIN DECK	100-105	4,200	3,800
BRIDGE TRIN DECK	10-104	32,800	28,800
POOD TRIN DECK	82-17	4,600	4,000
TOTAL TRIN DECKS		71,600	66,600
TOTAL HOLDS		375,000	347,600
TOTAL CARGO		446,600	414,200

COMPARTMENT	FRAMES	TONS
No. 1 O.B. Tank	5-11	145
No. 2 O.B. Tank	5-11	470
No. 3 O.B. Tank	5-11	67
No. 4 O.B. Tank	5-11	102
No. 5 O.B. Tank	5-11	240
No. 6 O.B. Tank	5-11	128
TOTAL O.B. TANKS		1192
FORE PEAK	5-11	35
AFT PEAK	5-11	135
TOTAL PEAKS		270
TOTAL DOUBLE BOTTOM		192
TOTAL WATER BALLAST		1470

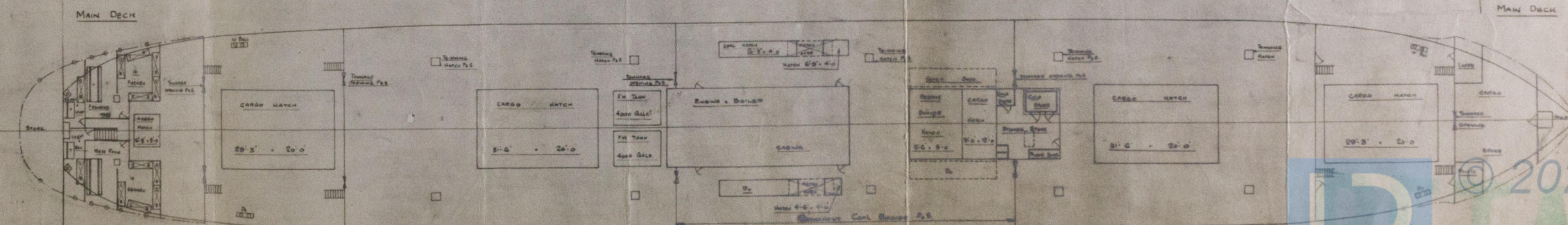
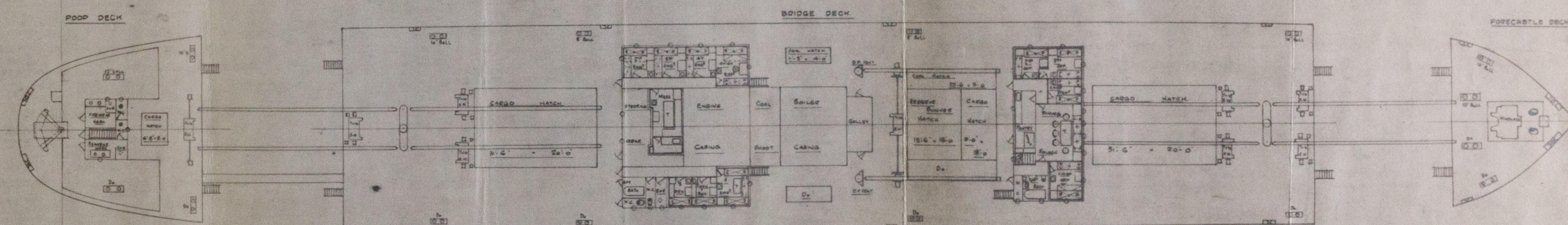
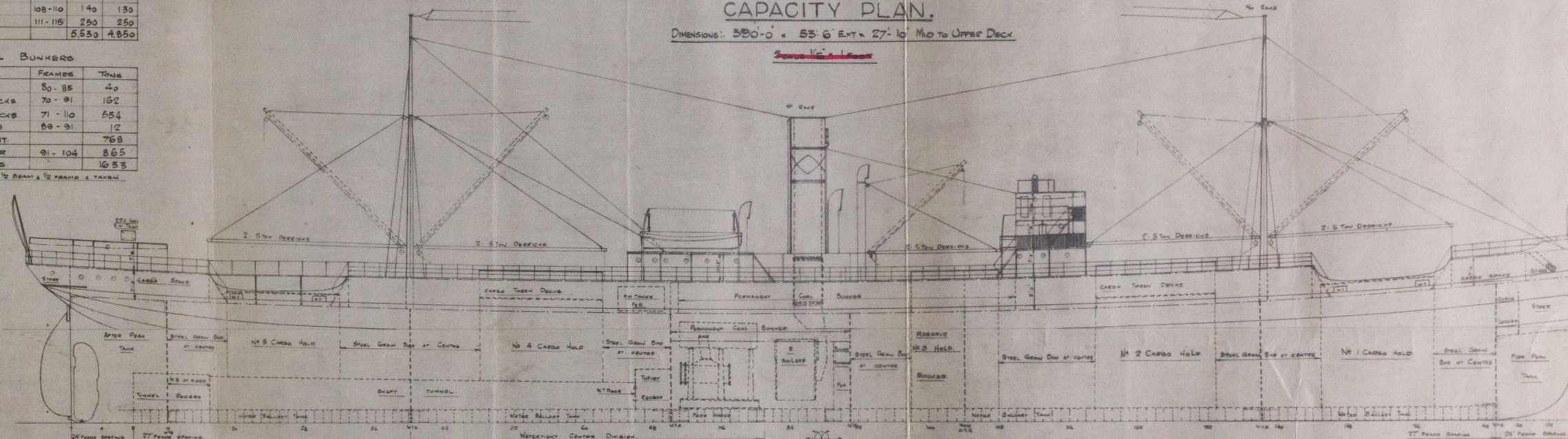
COMPARTMENT	FRAMES	GROSS C.F.	NET C.F.
STORES IN POOD	40-70	1,100	1,000
STORES IN FOLD	40-70	880	780
STORES IN FOLD	100-105	1,500	1,200
STOWAGE STORES	100-105	1,650	1,400
BUNDLED STORES	100-105	140	130
COLD STORES	111-115	250	250
TOTAL STORES		5,530	4,850

COMPARTMENT	FRAMES	TONS
COAL SHOOT	50-85	43
UPPER TRIN DECK	70-91	102
BRIDGE TRIN DECK	71-10	54
POOD TRIN DECK	80-91	12
TOTAL PERMANENT		768
RESERVE BUNKERS	91-104	665
TOTAL BUNKERS		1053



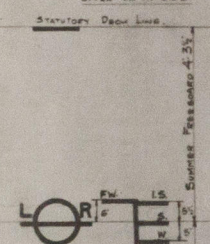
S.S. GRACEFIELD. CAPACITY PLAN.

Dimensions: 300'-0" x 55'-6" x 27'-6" Mtd to Upper Deck



SCALE 1/2" = 1 FOOT.

STATUTORY DECK LINE
 1/2" ABOVE STEEL
 UPPER DECK AT 800'



DRAFT	DEAD WEIGHT	TONS	MOMENT
27	11,000	41.90	1039
26	10,000	41.85	926
25	9,000	41.80	813
24	8,000	41.75	700
23	7,000	41.70	587
22	6,000	41.65	474
21	5,000	41.60	361
20	4,000	41.55	248
19	3,000	41.50	135
18	2,000	41.45	22
17	1,000	41.40	9
16	0	41.35	0