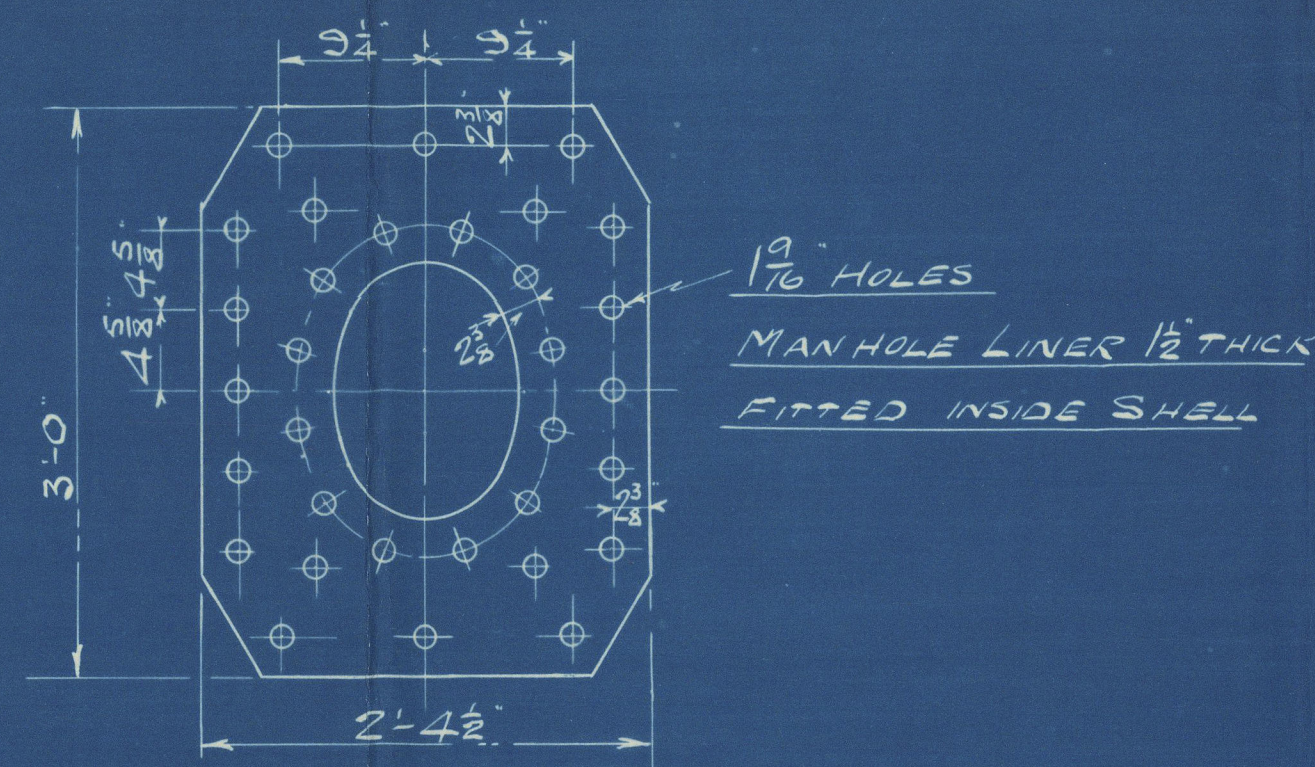


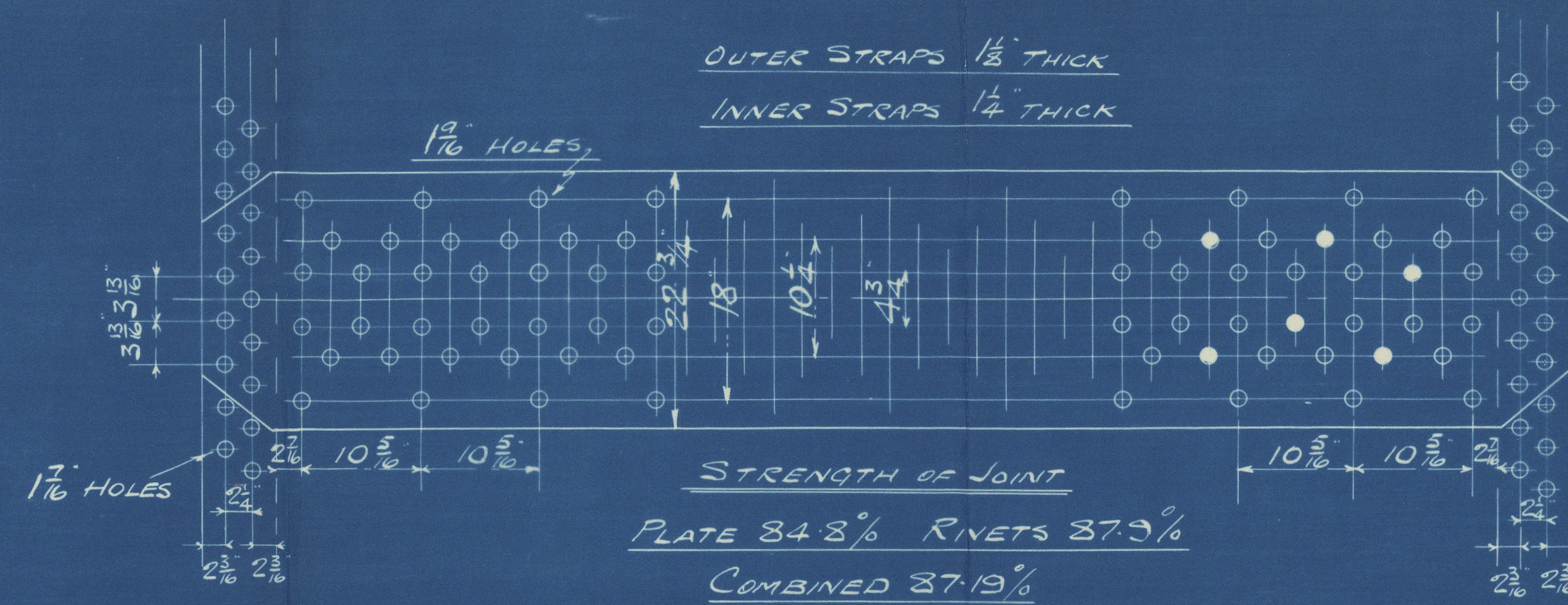
DIMENSIONS.

TOTAL HEATING SURFACE	22810 #
SURFACE OF TUBES	2328 #
AREA OF FIRE GRATE	72 #
LENGTH OF FIRE BARS	6'3"
NO OF TUBES	420
DIAM. OF TUBES OUTSIDE	3"
LENGTH OF TUBES	7'-2 1/2" OVER PLATES
WORKING PRESSURE	215 LBS / SQ. IN.
DIAM. OF SAFETY VALVE	3 1/2" DOUBLE (FORCED DRAUGHT)
AREA THRO' TUBES	15.3 #



SHELL MANHOLE 16" x 12"

DOUBLE PLATE GIRDER STAYS
PLATES 7/8" THICK
FITTED WITH 3-1/4" BOLTS
EACH 2.07 SQ. EFF. AREA



SHELL STRAPS & COMPENSATION PLATES: 31-35 TONS TENSILE

GIRDERS: 29-33 TONS

ALL OTHER PLATES: 26-30 TONS

LONGITUDINAL STAYS: 28 TONS MIN. TENSILE

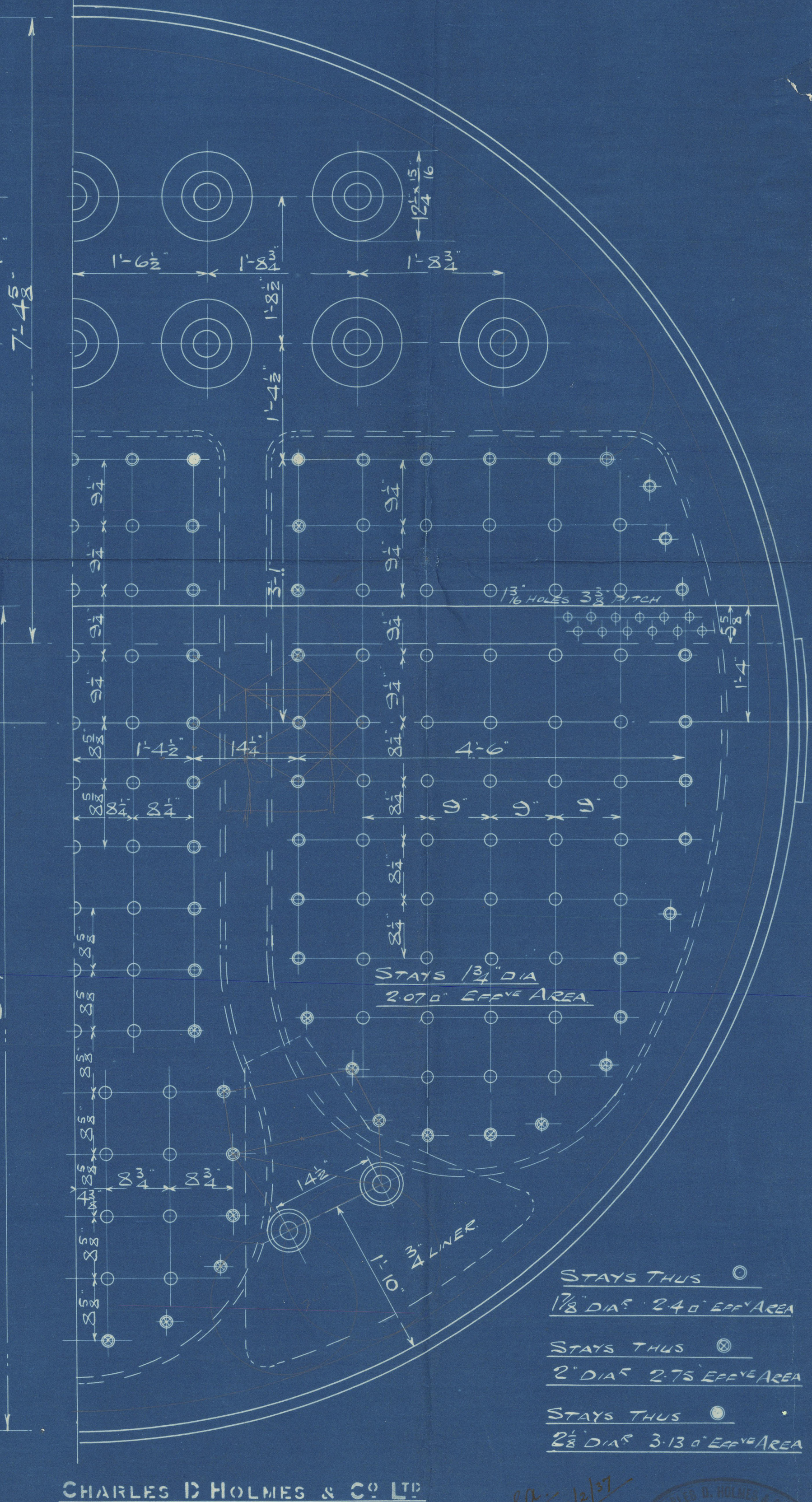
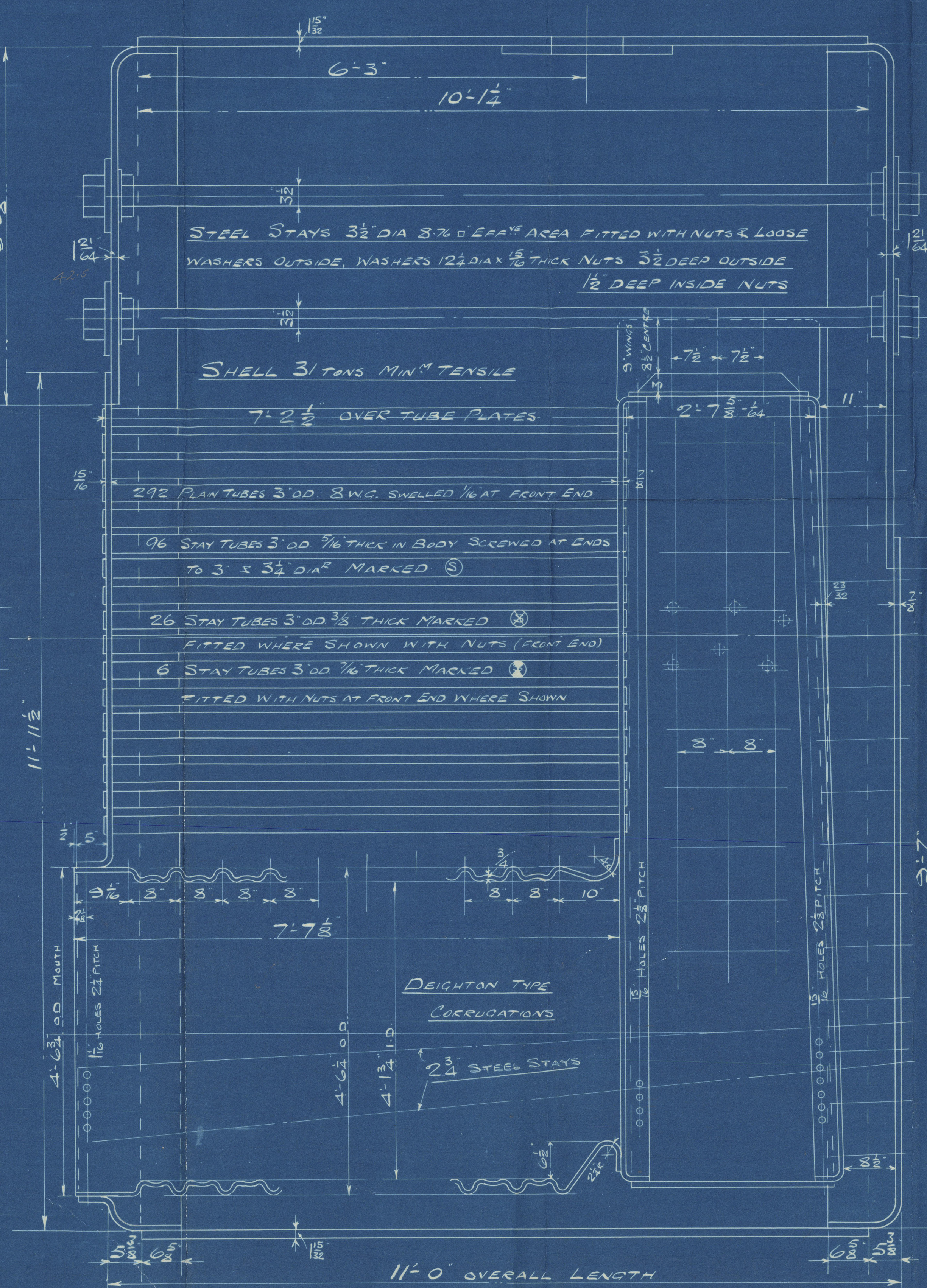
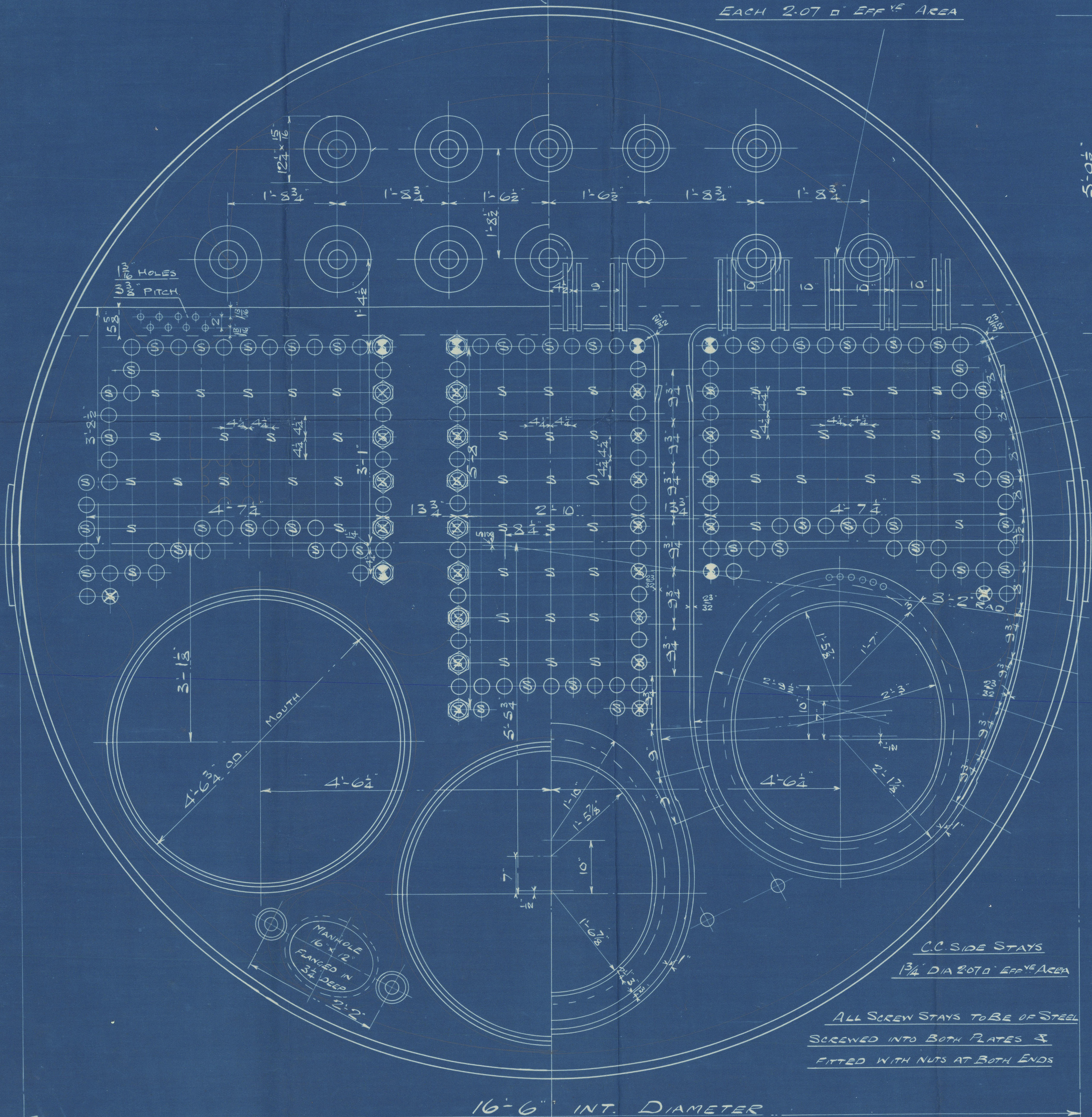
COMBUSTION CHAMBER STAYS 26

LONGITUDINAL STAYS SCREWED 8 THDS / INCH

COMBUSTION CHAMBER STAYS SCREWED 10

L/W IRON STAY TUBES SCREWED 9

RIVETS: 23 TONS SHEAR



PLAN NO 1036S

STEEL BOILER NO 1523

CHARLES D HOLMES & CO LTD
ENGINEERS & BOILER MAKERS
HULL 17-237

DRAWER NO 112
DRAWING NO

23 FEB 1917
HULL
ENGINEERING WORKS

HULL

C. D. Holmes & Co., Ltd.

Boiler No. 1523



S.S.	Englishman
REPORT No.	48307

RETAIN



© 2020

Lloyd's Register
Foundation

W396-0051