

4.3-37

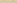
— DIMENSIONS —

135'-0" B.P. x 30'-0" MLD x 16'-0" MLD

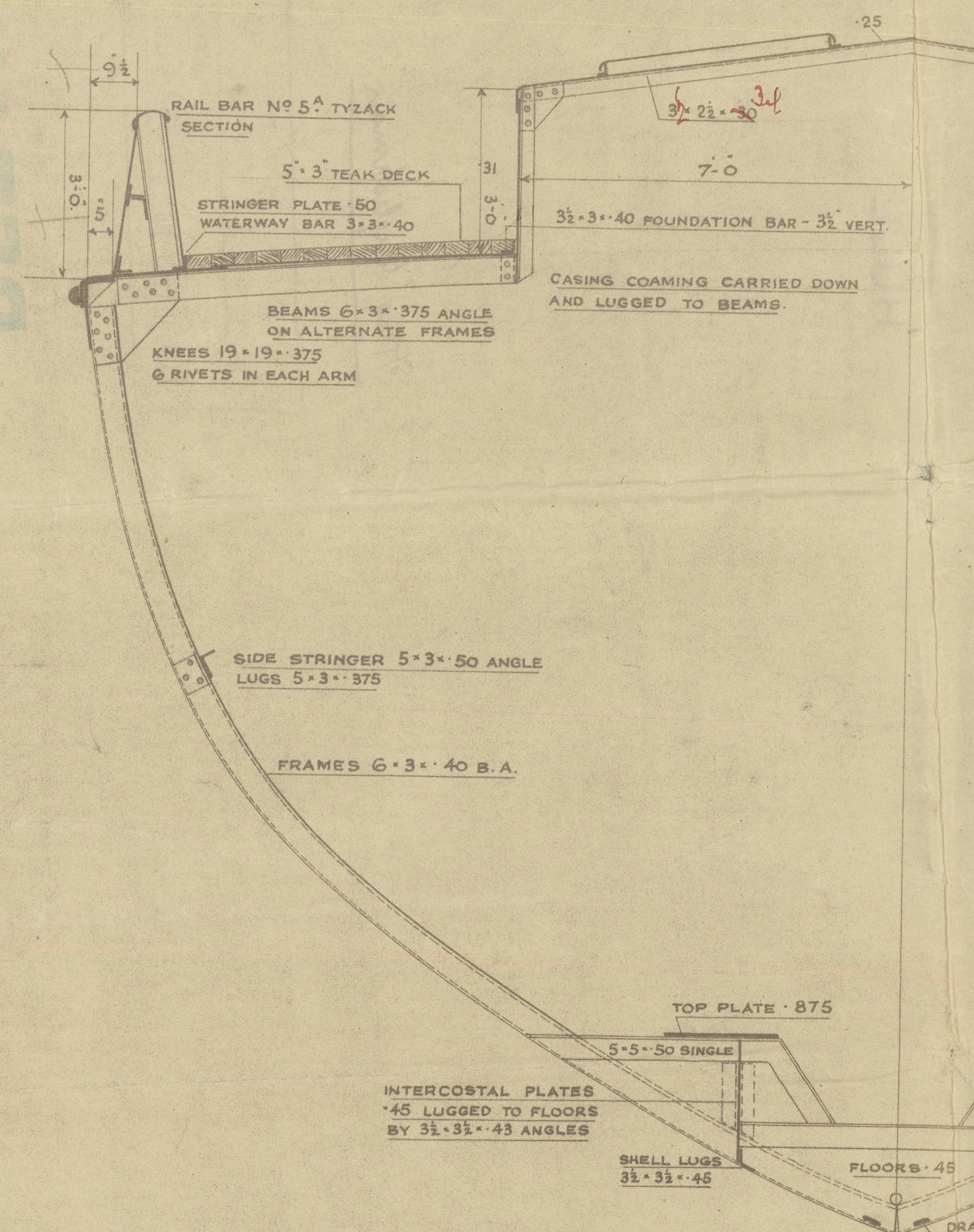
OWNERS
REQUIREMENTOWNERS
REQUIREMENT

— № 1184 —

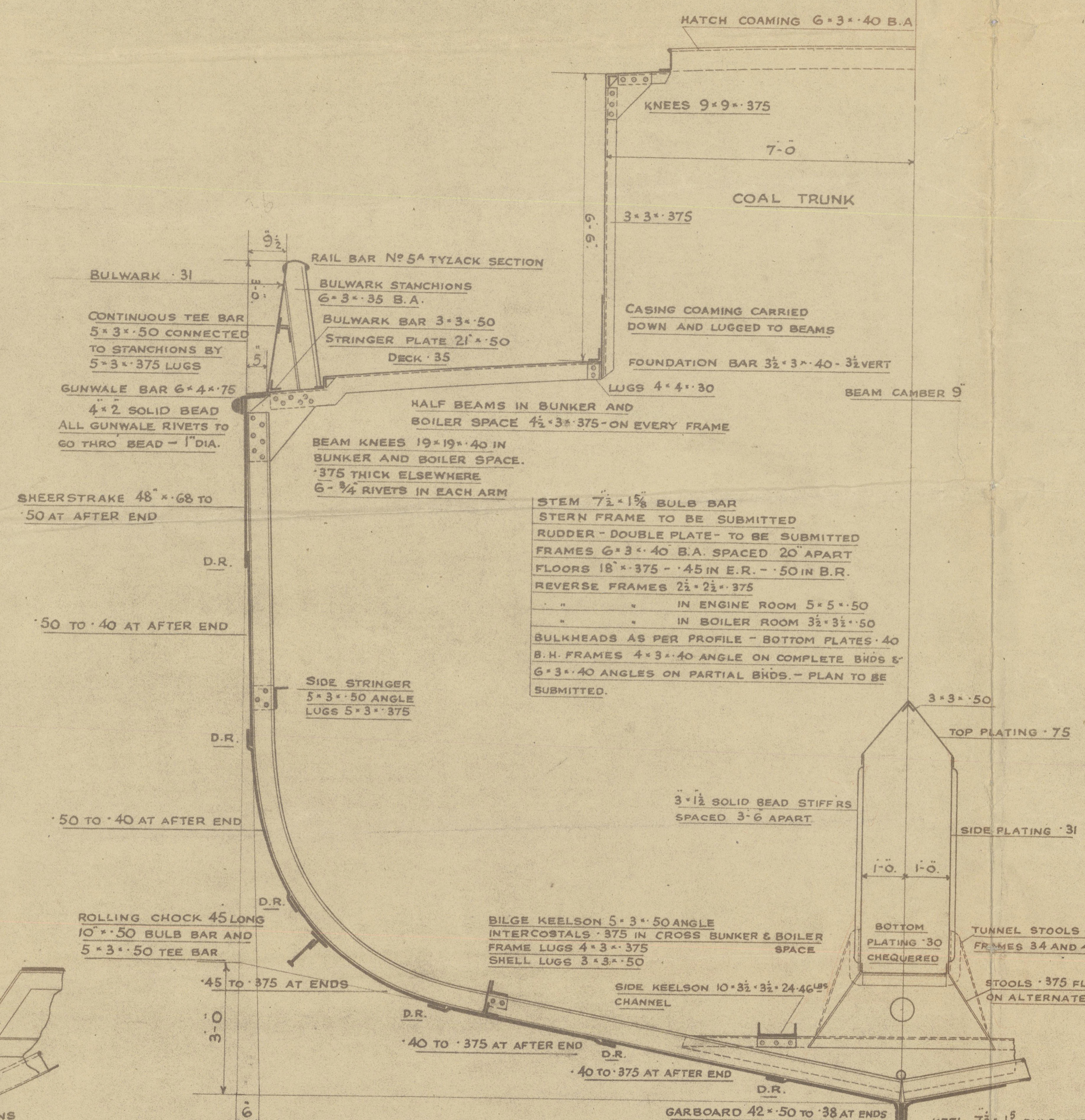
SCALE $\frac{1}{2}$ IN. = 1 FT.

TO CLASS  100.A.I. LLOYDS
FOR TOWING SERVICES

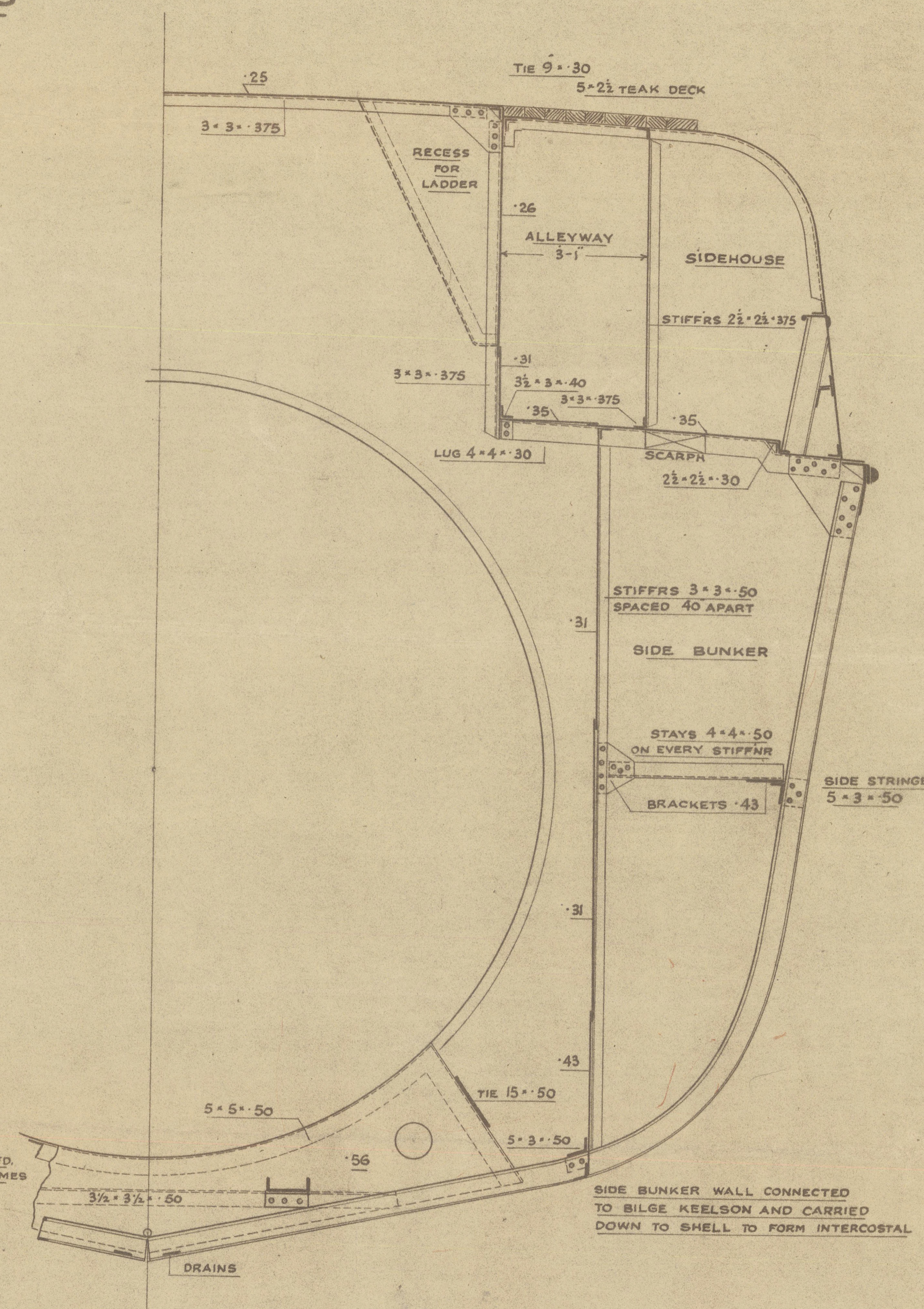
	<u>BUTTS OF SHEER-STRAKE AND GARBOARD STRAPPED & DOUBLE RIVETTED</u>		
	<u>BUTTS OF REMAINING STRAKES OVERLAPPED & DOUBLE RIVETTED</u>		
	<u>BUTTS OF STRINGER PLATES OVERLAPPED & DOUBLE RIVETTED</u>		
	<u>1 DIA STEEL RIVETS THRO' 4" 2 BEAD & GUNWALE BAR</u>		
	<u>1 DIA IRON RIVETS IN KEEL, STEM & STERN-FRAME</u>		
1	"	"	" ENGINE SEAT TOP PLATE
2	"	"	" ENGINE & BOILER SEATING
4	"	"	" ELSEWHERE EXCEPT IN BUNKERS, CASINGS,
	<u>DECK-HOUSES ETC. WHICH ARE TO BE 5/8" DIA.</u>		



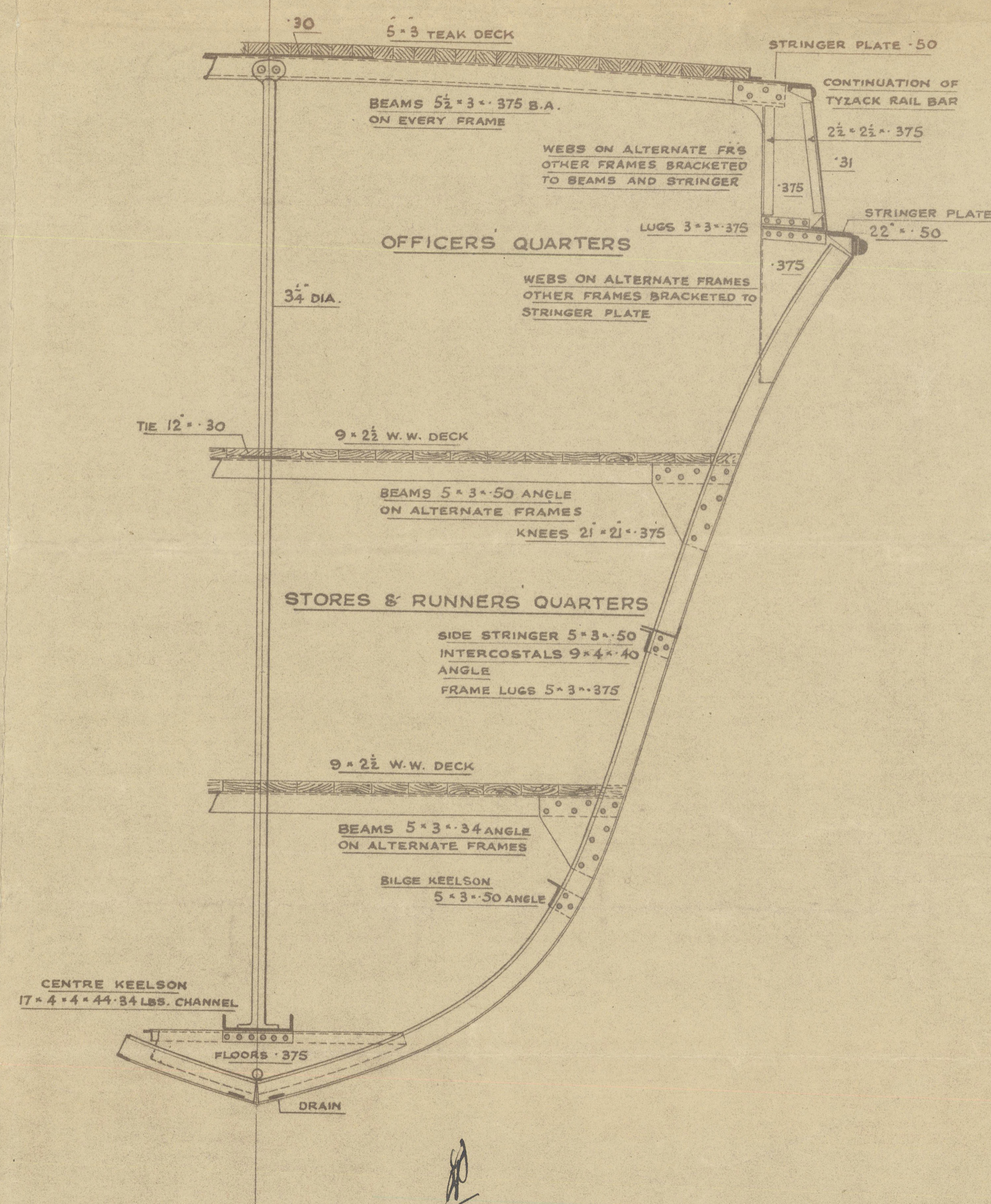
— SECTION IN ENGINE ROOM —



— MIDSHIP SECTION —



— SECTION IN BOILER ROOM —



— SECTION IN FORE CABIN —

HULL

Cochrane & Sons, Ltd.

Yard No. 1184

Marship Section

Steam Tug intended for
United Towing Co Ltd
Hull

S/Tug "Englishman"

S.S. _____

HULL REPORT No. 48301

RETAIN



© 2020

W396-0049

Lloyd's Register
Foundation